



## Bronco Adaptive Cruise Control Relocation Installation Instructions

Thank you for purchasing this product!

### Installation Notes:

- This kit is designed to fit a 2021-Current Bronco
- This kit will not fit a Bronco Sport
- Refer to your factory service manual for removal of any factory components.
- Test the adaptive cruise control before relying on it solely.

### Tools required:

- Various hand tools
- Zip Ties
- Heat Shield

## Contents of box

Bill Of Materials for B4WK12871		
QTY	Part Number	Description
1	B4W125214P	Bronco ACC Lower Bracket Powder Coated
1	B4W125213P	Bronco ACC Upper Bracket Powder Coated
3	.60C140KBC/A27380	M6-1X 14MM Button Head Screw
3	.60CNNE/A2985	M6-1 Nylon Nut Stainless
2	.80NWSF0Z/125	M8 Flat Washer Zinc

## Step 1:

Park the vehicle on a level surface, refer to your factory service manual and remove your front bumper.

## Step 2:

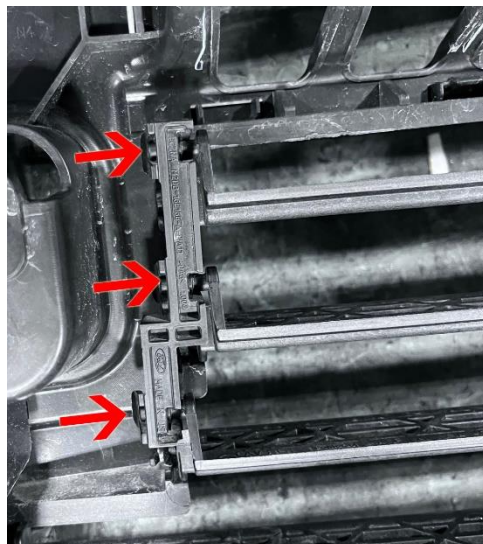
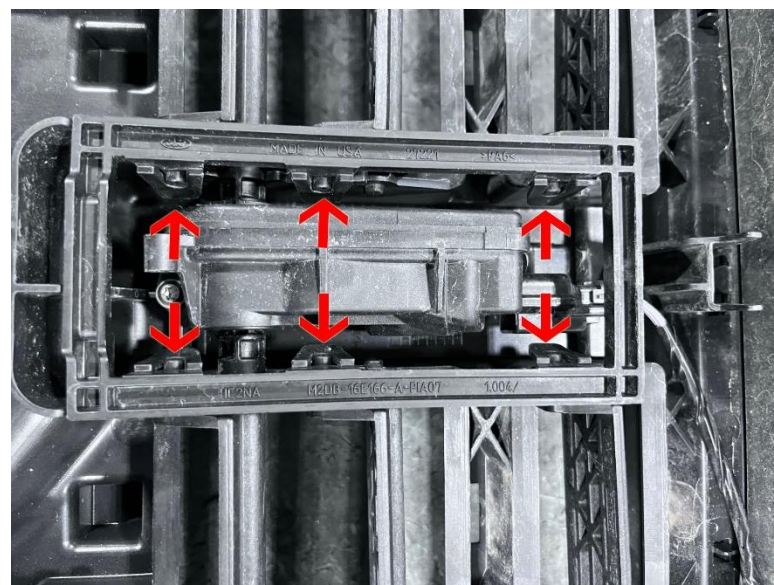
With the bumper removed. Remove the cover from the cruise control sensor and remove the sensor and bracket from the bronco and unplug the wiring harness.

## Step 3:

Refer to your factory service manual and remove the fender flares, upper grill shroud, grill, front valence, headlights and both upper and lower inner grill.

## Step 4:

With the upper inner grill removed, remove the 3 upper drivers side shutters from the grill by prying the clips loose as shown in the picture below.



### **Step 5:**

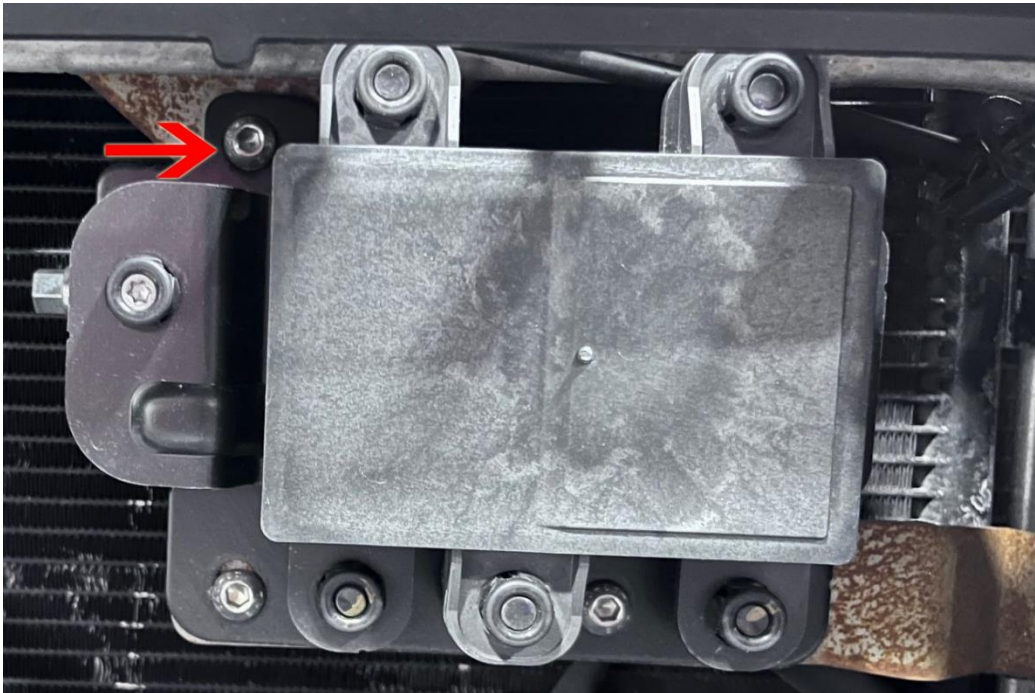
Remove the wiring attached to the lower inner grill. Unwrap the wiring harness until the 2 harnesses are separated. Rewrap both harnesses separate with heat shield. Reattach the lower grill shutter harness to the lower grill. Reinstall the lower grill.

### **Step 6:**

Place the upper cruise control bracket between the ac condenser and the radiator cowl.

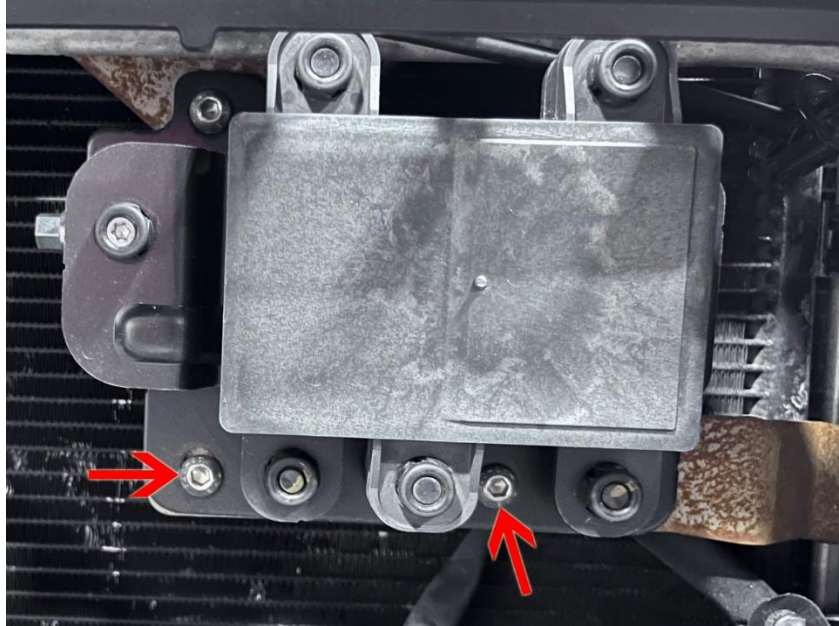
### **Step 7:**

With the supplied hardware install the cruise control sensor to the upper bracket as shown below.



### Step 8:

With the supplied hardware install the lower cruise control bracket to the cruise control sensor as shown below.



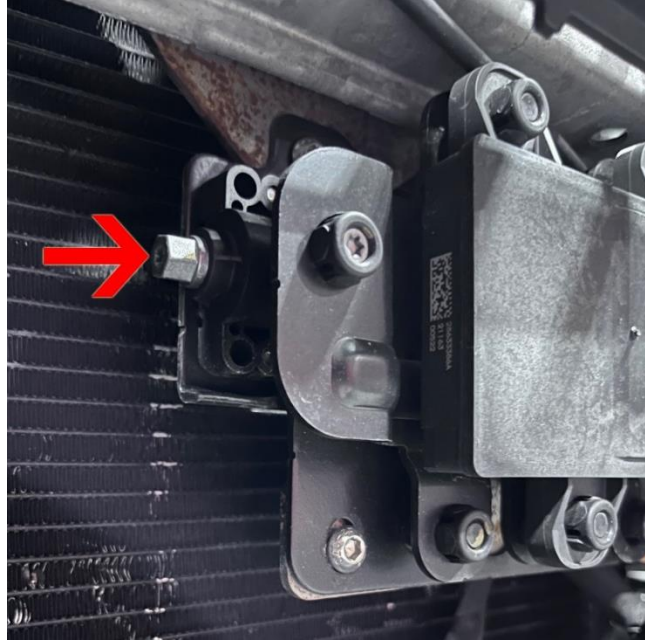
### Step 9:

Reinstall the upper inner grill removed in step 2. The upper bracket will go above inner grill with a M8 washer will be a spacer between it and the lower bracket should go behind the inner grill



## Step 10:

Level the cruise control sensor by tuning the adjustment screw on the side of the bracket. Make sure that the screw does not come in contact with the ac condenser. If the screw is getting close to the ac condenser loosen the front screw on the mounting bracket to move it farther from the condenser.



## Step 11:

Reinstall the rest of the factory parts removed in step 2.

## Step 12:

Test drive the vehicle. If the adaptive cruise control does not work properly go back to step 10 and adjust the level of the sensor.

# Congratulations you have now completed the installation of your Bronco Adaptive Cruise Control Relocation

### Professional Services Disclaimer:

The content of all pages of this website (collectively, the "Website"), such as text, graphics, images, information and other material (collectively, "Content") is for informational purposes only. Any information furnished on this Website is not intended nor implied to be automotive advice and is not intended to replace personal consultation with a qualified automotive service technician, mechanic, or similar automotive professional.

Barnes 4WD has not examined the Content for accuracy, timeliness, completeness, appropriateness, or helpfulness. Barnes 4WD does not endorse any specific tests, products, procedures, opinions, or other information that may be mentioned on this Website. Your reliance upon information and Content obtained by you at or through this Website is solely at your own risk. IN NO EVENT SHALL BARNES 4WD BE LIABLE OR OTHERWISE RESPONSIBLE FOR ANY DAMAGE OR INJURY (INCLUDING DEATH) TO YOU, OTHER PERSONS, OR PROPERTY ARISING FROM ANY USE OF ANY PRODUCT, INFORMATION, IDEA, OR INSTRUCTION CONTAINED IN THE CONTENT.

BARNES 4WD DOES NOT MAKE ANY REPRESENTATION OR WARRANTY, EXPRESS OR IMPLIED, AT LAW OR IN EQUITY, WITH RESPECT TO ANY PRODUCT FEATURED ON THE WEBSITE, INCLUDING WITHOUT LIMITATION WITH RESPECT TO MERCHANTABILITY, FITNESS FOR ANY PARTICULAR PURPOSE, VALUE, VALIDITY, OR ENFORCEABILITY, AND ANY AND ALL SUCH OTHER REPRESENTATIONS OR WARRANTIES ARE HEREBY EXPRESSLY DISCLAIMED.