



DIY Folding Table Brackets Installation Instructions

Thank you for purchasing this product!

Installation Notes:

- This Bracket set is designed to be used with a 12" cutting board that is 1" thick. The width will be determined by the space limitations of the installation area.
- 14.1" of height is required in the installation area for mounting the bracket set.
- The bracket set is raw steel and will need to be coated before use.
- Due to the wide range of applications no mounting hardware is provided.
- All mounting holes are precut to accept ¼" hardware.

Tools required:

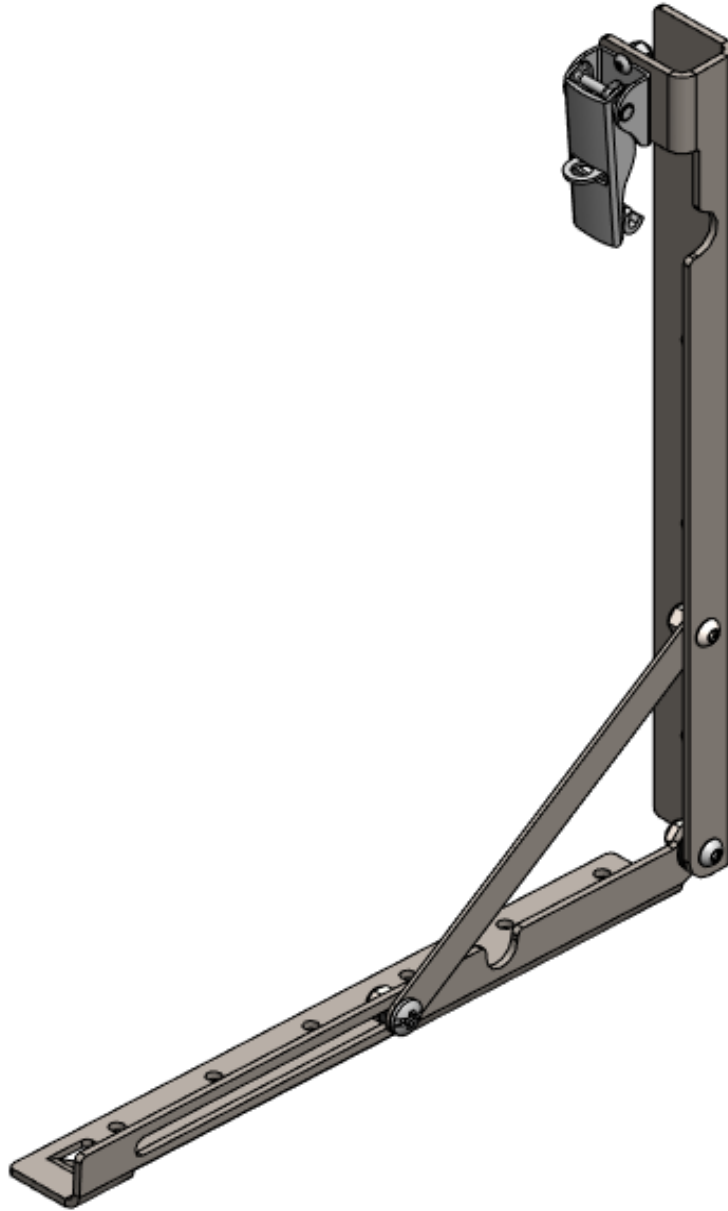
- 11/32" Wrench
- 5/32" Hex Key
- 3/32" Hex Key
- 7/16" Wrench

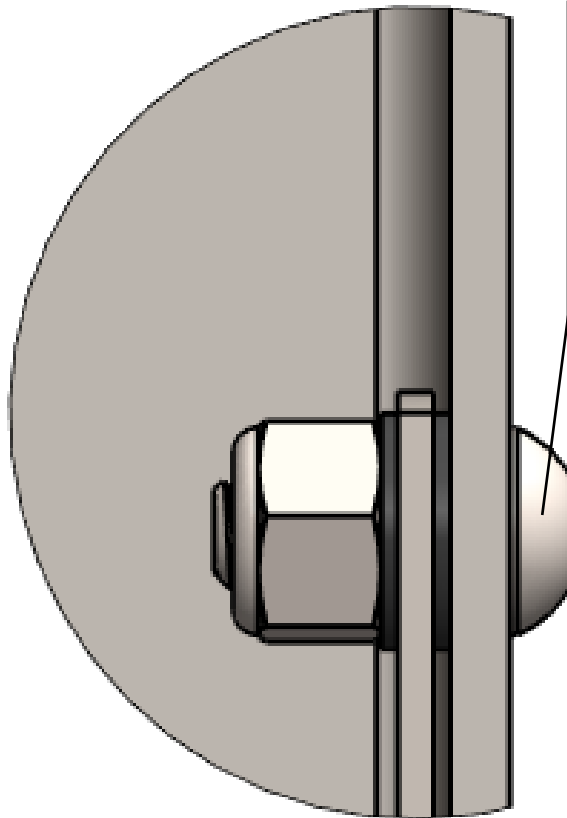
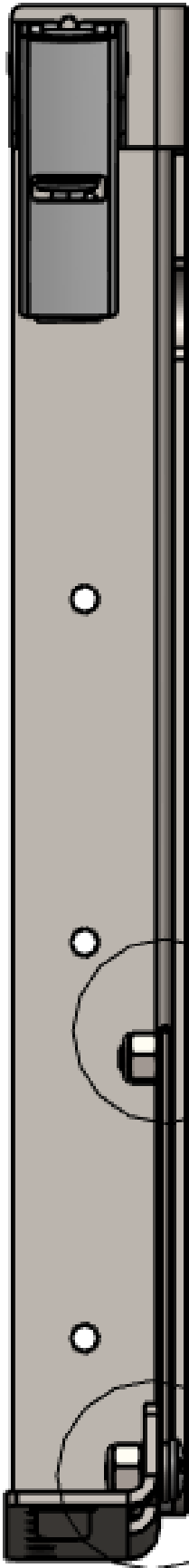
Contents of each box

Bill Of Materials for B4WK12853			
QTY	Part Number	Etch Number	Description
1	B4W125207	207	DIY Table Bracket RR
1	B4W125206	206	DIY Table Bracket FR
2	B4W075071	071	Folding Table Supports
1	B4W125209	209	DIY Table Bracket RL
1	B4W125208	208	DIY Table Bracket FL
6	8CNTES		8-32 Thin Nylock Stainless
6	8C43KBCS		8-32 7/16 Button Socket Head Cap Screw
4	25C62KBC3		1/4"-20 X 5/8 Button Head Cap Screw
4	98002A108		Steel Shoulder Screws for Barrels, 1/4"-20, 9/16" Long
8	95606A430		1/4" Nylon Plastic Washer
2	90131A102		1/4" Abrasion-Resistant Cushioning Washer
6	25CNNE0Z		1/4"-20 Nylock Nut
2	91-532-07		Under-center Draw Latch Medium Size, Steel, Zinc Plate

Step1:

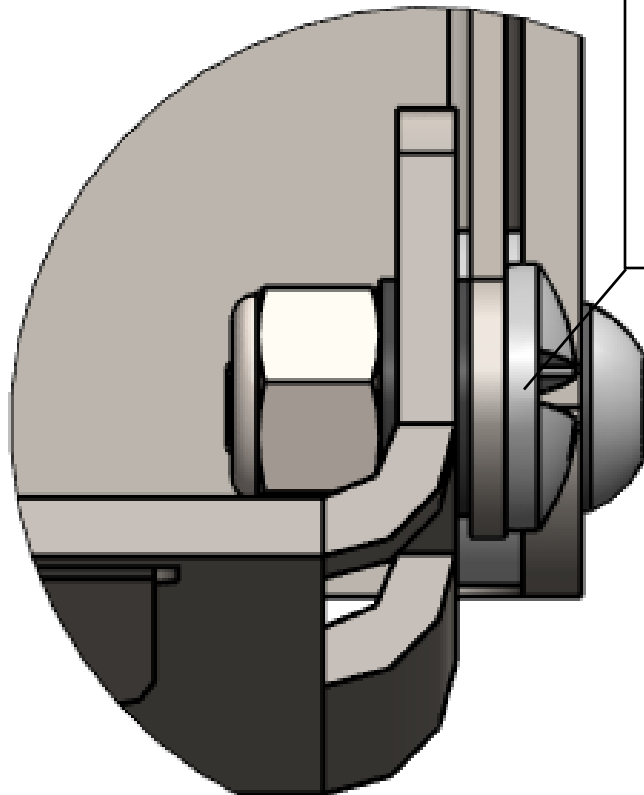
Assemble the bracket set as shown below.





- 25C62KBC3
- B4W125207
- 95606A430
- B4W075071
- 95606A430
- 25CNNE0Z

A

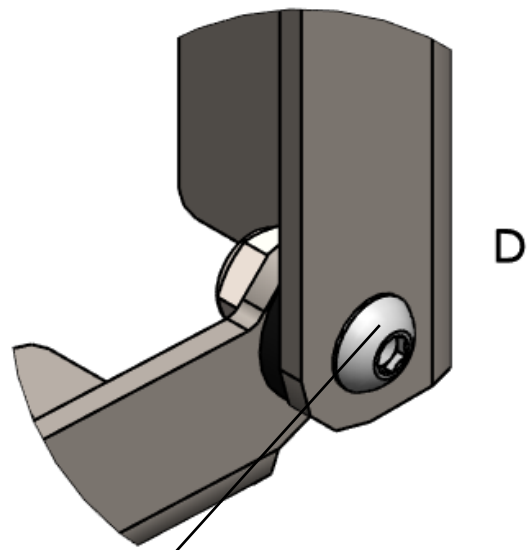
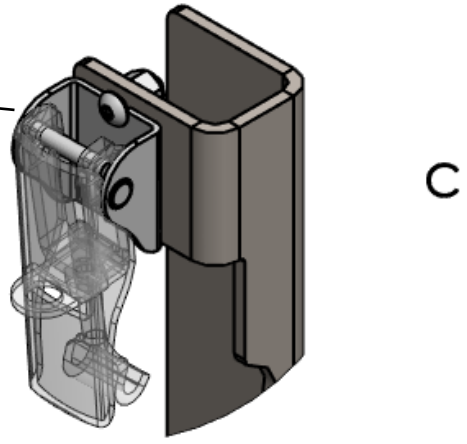
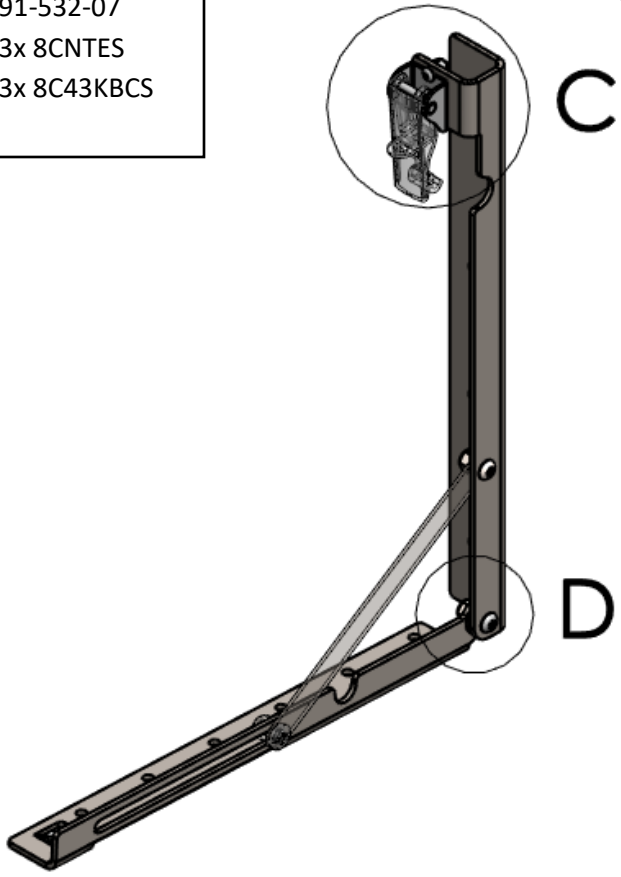


- 98002A108
- B4W075071
- 95606A430
- B4W125206
- 95606A430
- 25CNNE0Z

B

C

- 91-532-07
- 3x 8CNTES
- 3x 8C43KBCS



- 25C62KBC3
- B4W125207
- 90131A102
- B4W125206
- 25CNNE0Z

Step2:

Repeat step one with the components on the other side.

Step3:

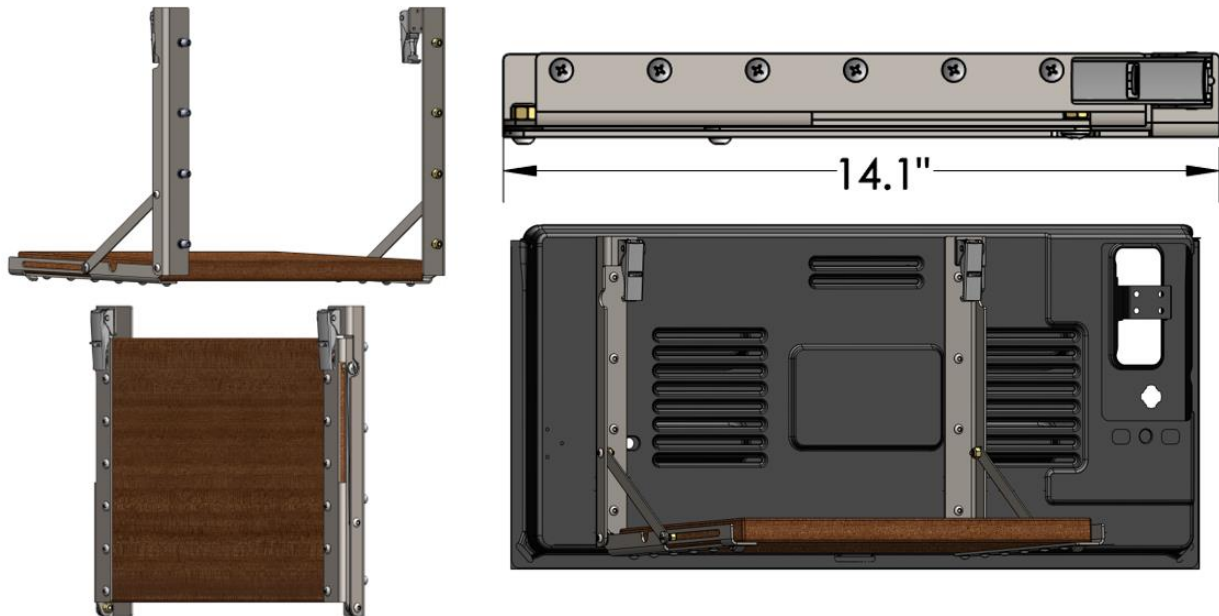
Selecting the cutting board.



Step4:

Mount the cutting board to the bracket set and the assembly to the structure.

These need to be done together because the width of the board will determine the location of the bolt holes. Depending on thickness and material hardware may vary. A minimum height of 14.1" is required to mount these brackets. Below are a few examples and reference images.



Professional Services Disclaimer:

The content of all pages of this website (collectively, the "Website"), such as text, graphics, images, information and other material (collectively, "Content") is for informational purposes only. Any information furnished on this Website is not intended nor implied to be automotive advice and is not intended to replace personal consultation with a qualified automotive service technician, mechanic, or similar automotive professional.

Barnes 4WD has not examined the Content for accuracy, timeliness, completeness, appropriateness, or helpfulness. Barnes 4WD does not endorse any specific tests, products, procedures, opinions, or other information that may be mentioned on this Website. Your reliance upon information and Content obtained by you at or through this Website is solely at your own risk. IN NO EVENT SHALL BARNES 4WD BE LIABLE OR OTHERWISE RESPONSIBLE FOR ANY DAMAGE OR INJURY (INCLUDING DEATH) TO YOU, OTHER PERSONS, OR PROPERTY ARISING FROM ANY USE OF ANY PRODUCT, INFORMATION, IDEA, OR INSTRUCTION CONTAINED IN THE CONTENT.

BARNES 4WD DOES NOT MAKE ANY REPRESENTATION OR WARRANTY, EXPRESS OR IMPLIED, AT LAW OR IN EQUITY, WITH RESPECT TO ANY PRODUCT FEATURED ON THE WEBSITE, INCLUDING WITHOUT LIMITATION WITH RESPECT TO MERCHANTABILITY, FITNESS FOR ANY PARTICULAR PURPOSE, VALUE, VALIDITY, OR ENFORCEABILITY, AND ANY AND ALL SUCH OTHER REPRESENTATIONS OR WARRANTIES ARE HEREBY EXPRESSLY DISCLAIMED.