

CF CUSTOM • FABRIC PROGRAM

AVAILABLE FABRICS

custom fabric program | Choices in Fabric. Wherever chairs are identified with our CF graphic, you have hundreds of choices in fabric. Solids, patterns and textures. Simple and complex. Vinyls. Hospitality/healthcare-safe performance fabrics. Recycled selections. Choices for every environment. Many are IN STOCK. You can also choose C.O.M. (customer's own material). Digital representations of fabrics are available at www.officestar.net **Custom Fabrics require additional lead time.**

Grade A

Linen
Colored Mesh
Dove • Dillon
Ridgecrest
Gavotte
Interlink
Icon • Diamond

Grade B

Castillo
Twilight
Fine Tune
City Park
FreeFlex®
Transport
Trinket
Crave

Grade C

Dot
Tracery
Couture

Grade R

Key Largo
Element



A | grade fabric



-F23 | Black



-F14 | Mauve

-F8 | Lime



-F10 | Orange



-F22 | Stone



-F25 | Sand

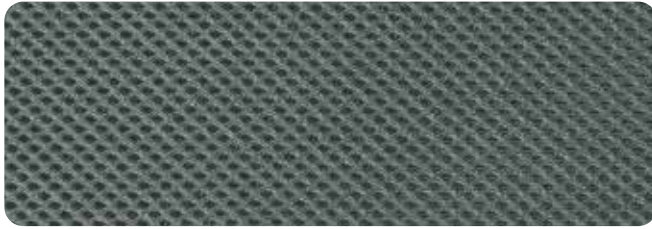


-F28 | Turquoise

- **contents** 100% polyester • **surface abrasion** 70,000 double rubs (Wyzenbeek), 50,000 double rubs (Martindale) •
- **lightfastness** 40 hours: dark colors, 3.5 hours: light colors Class 4 (AATCC Test Method 16E) •
- **colorfastness** Wet - Class 3.5, Dry - Class 4 (AATCC Test Method 8) • **flammability** TB117-2013

*Due to differences in dye batches and variations in printing as well as viewing environments and uneven color fading there will be slight variations in color. Exact matching may not be possible.

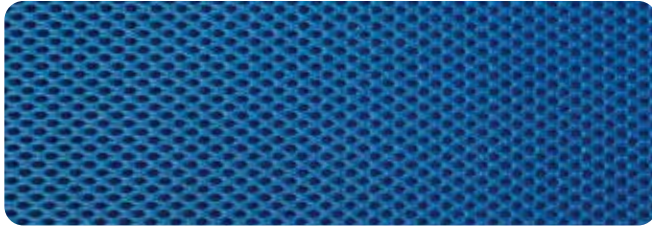
Colored Mesh



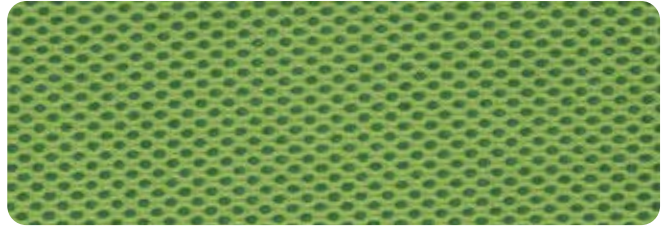
-2M | Grey



-3M | Black



-5 | Royal Blue



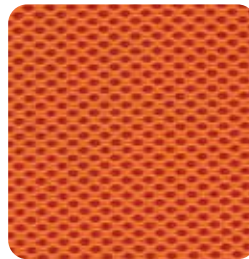
-6 | Green



-7 | Blue



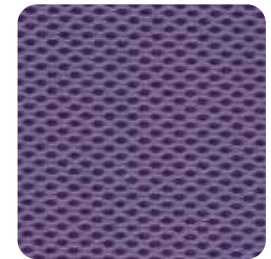
-9 | Red



-18 | Orange



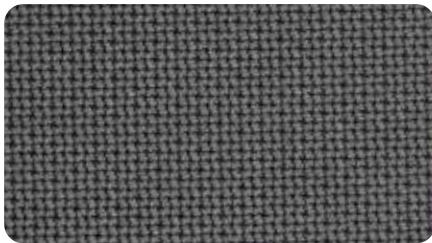
-261 | Pink



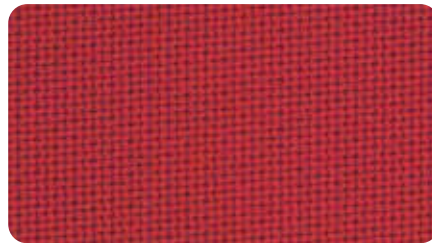
-512 | Purple

• contents 100% polyester • flammability CAL117•

Dove



-5811 | Steel



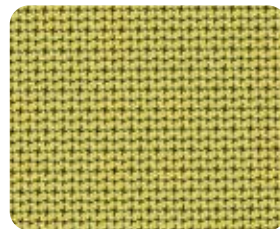
-5812 | Rouge



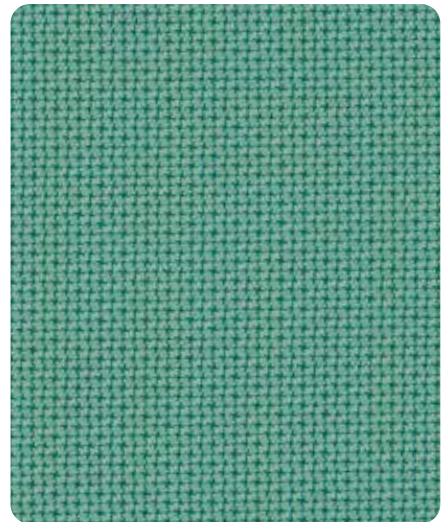
-5819 | Violet



-5877 | Sky



-5879 | Olive



-5881 | Jade

- contents 70% polyester, 30% cotton • surface abrasion 70,000 double rubs (Wyzenbeek), 35,000 double rubs (Martindale) •
- lightfastness 40 hours, Class 4 (AATCC Test Method 16E) • colorfastness Wet - Class 4.5, Dry - Class 4 (AATCC Test Method 8) •
- flammability Cal. 117, Section E, CS-191-53, Class 1 BIFMA FF1-78, NFPA 260-1989, UFAC, Class 1, B.S. 5852 Part 1: 1979 Ignition Source 0, Smouldering Cigarette

*Due to differences in dye batches and variations in printing as well as viewing environments and uneven color fading there will be slight variations in color. Exact matching may not be possible.