

# CF CUSTOM • FABRIC PROGRAM

# AVAILABLE FABRICS

**custom fabric program** | Choices in Fabric. Wherever chairs are identified with our CF graphic, you have hundreds of choices in fabric. Solids, patterns and textures. Simple and complex. Vynils. Hospitality/healthcare-safe performance fabrics. Recycled selections. Choices for every environment. Many are IN STOCK. You can also choose C.O.M. (customer's own material). Digital representations of fabrics are available at [www.officestart.net](http://www.officestart.net) **Custom Fabrics require additional lead time.**

## Grade A

Linen  
Colored Mesh  
Dove • Dillon  
Ridgecrest  
Gavotte  
Interlink  
Icon • Diamond

## Grade B

Castillo  
Twilight  
Fine Tune  
City Park  
FreeFlex®  
Transport  
Trinket  
Crave

## Grade C

Dot  
Tracery  
Couture

## Grade R

Key Largo  
Element



## A | grade fabric



-F23 | Black



-F8 | Lime



-F10 | Orange



-F14 | Mauve



-F22 | Stone



-F25 | Sand

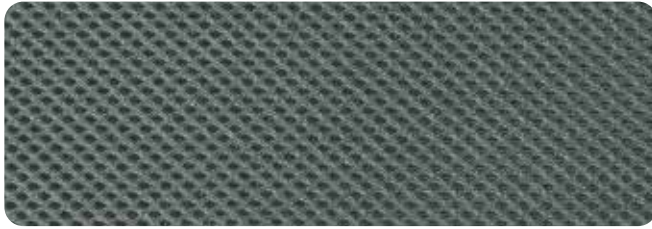


-F28 | Turquoise

- **contents** 100% polyester • **surface abrasion** 70,000 double rubs (Wyzenbeek), 50,000 double rubs (Martindale) •
- **lightfastness** 40 hours: dark colors, 3.5 hours: light colors Class 4 (AATCC Test Method 16E) •
- **colorfastness** Wet - Class 3.5, Dry - Class 4 (AATCC Test Method 8) • **flammability** TB117-2013

\*Due to differences in dye batches and variations in printing as well as viewing environments and uneven color fading there will be slight variations in color. Exact matching may not be possible.

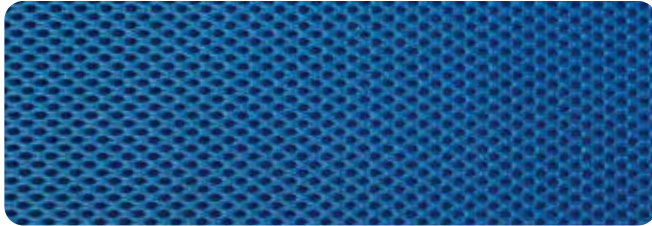
Colored Mesh



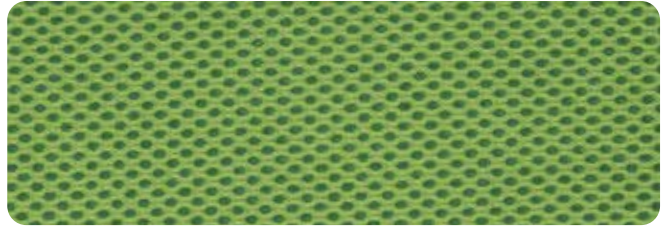
-2M | Grey



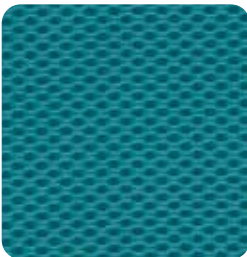
-3M | Black



-5 | Royal Blue



-6 | Green



-7 | Blue



-9 | Red



-18 | Orange



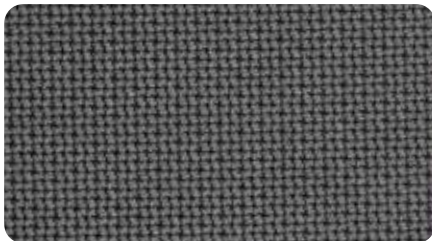
-261 | Pink



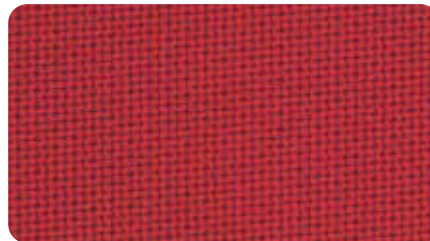
-512 | Purple

• contents 100% polyester • flammability CAL117•

Dove



-5811 | Steel



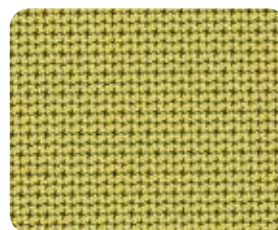
-5812 | Rouge



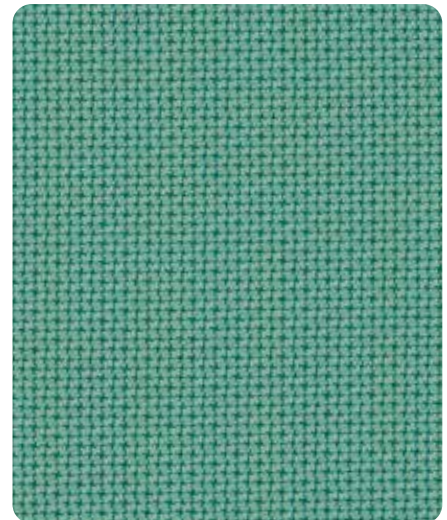
-5819 | Violet



-5877 | Sky



-5879 | Olive



-5881 | Jade

- contents 70% polyester, 30% cotton • surface abrasion 70,000 double rubs (Wyzenbeek), 35,000 double rubs (Martindale) •
- lightfastness 40 hours, Class 4 (AATCC Test Method 16E) • colorfastness Wet - Class 4.5, Dry - Class 4 (AATCC Test Method 8) •
- flammability Cal. 117, Section E, CS-191-53, Class 1 BIFMA FF1-78, NFPA 260-1989, UFAC, Class 1, B.S. 5852 Part 1: 1979 Ignition Source 0, Smouldering Cigarette

\*Due to differences in dye batches and variations in printing as well as viewing environments and uneven color fading there will be slight variations in color. Exact matching may not be possible.

## Dillon Antimicrobial



Promotes clean, safe environments with industry-leading Silver Ion Technology that kills and inhibits bacterial growth by 99.9% for continuous protection against microbes, pathogens and more. Easy-clean with water or solvent-based cleaners. Disinfects with 5:1 water/bleach solution. PVC free. Phthalate and lead compliant. Heavy-duty 200,000 double-rub abrasion resistance.



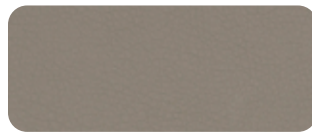
-R100 | Lipstick



-R101 | Snow



-R102 | Java



-R103 | Stratus



-R104 | Buff



-R105 | Blue



-R106 | Sage



-R107 | Black



-R111 | Graphite



-R112 | Steel

**contents** 100% polyurethane face; 70% polyester, 30% cotton back • **surface abrasion** 200,000 double rubs • **light fastness** Class 4  
**color fastness** Class 4 • **flammability** CA TB #117-2013; UFAC Class 1; NFPA 260 Class 1; MVSS 302; IMO A.652(16) 8.2

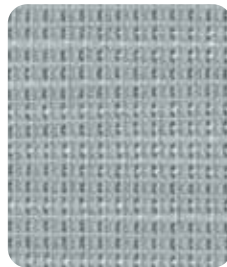
## Ridgecrest



-K015 | Meadow



-K016 | Beach



-K017 | Tide Pool



-K018 | Putty



-K019 | Chocolate

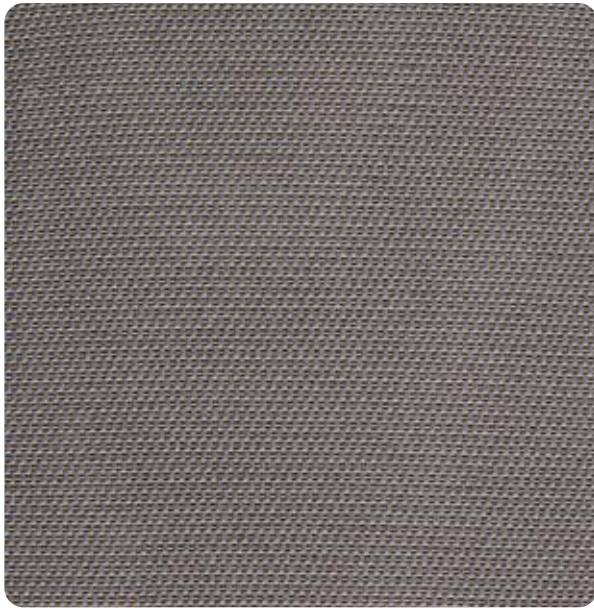


-K020 | Ink

**contents** 100% polyester • **surface abrasion** exceeds 100,000 cycles (Wyzenbeek-#10 cotton duck abradant) • **backing** acrylic  
**break strength** WARP 80 lbs, WEFT 68 lbs (ASTMD4034) • **seam slippage** WARP 84 lbs, WEFT 72 lbs (ASTMD4034)  
**light fastness** class 4/40 hrs min (AATCC16A) • **color fastness** Class 4 (ASTM D3597, AATC 8) Wet, Class 5 (ASTM D3597, AATCC 8) Dry • **flammability** CA Tech Bull. 117, Section E (CS-191-153) UFAC Class 1

\*Due to differences in dye batches and variations in printing as well as viewing environments and uneven color fading there will be slight variations in color. Exact matching may not be possible.

### Gavotte



-895 | Grey



-894 | Blue



-896 | Taupe



-897 | Burgundy

**contents** 100% polyester • **surface abrasion** 30,000 cycles (cotton duck)  
**break strength** warp 96 lbs, fill 99 lbs • **flammability** CA Tech Bull. 117, Section E • **treatments** N/A

### Interlink



-104 | Ink Blue



-106 | Laguna



-107 | Flint



-108 | Autumn



-105 | Garnet

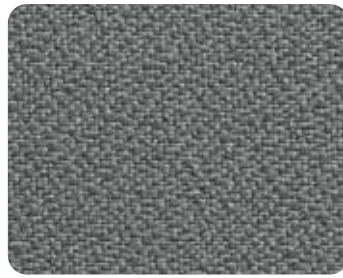
**contents** 100% Olefin backing: latex • **surface abrasion** 30,000+ double rubs • **break strength** warp 100 lbs, fill 125 lbs  
**flammability** CA Tech Bull. 117, Section E UFAC Class 1 BIFMA, Class 1 • **treatments** **BLOCKaide**™ a soil and stain repellent finish

\*Due to differences in dye batches and variations in printing as well as viewing environments and uneven color fading there will be slight variations in color. Exact matching may not be possible.

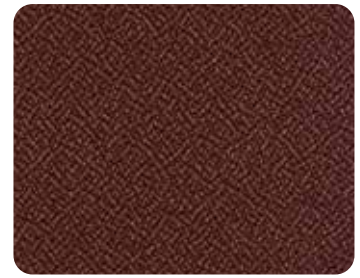
## Icon



-225 | Navy



-226 | Grey



-227 | Burgundy



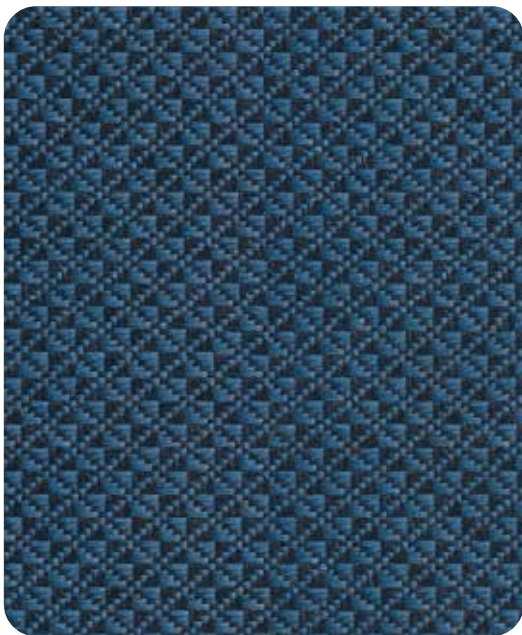
-231 | Black



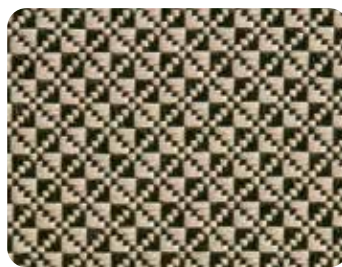
-232 | Taupe

**contents** 100% polyester • **surface abrasion** 400,000 double rubs (Wyzenbeek ASTM-D-4157)  
**break strength** warp 150 lbs, fill 88 lbs • **flammability** CA Tech Bull. 117, Section E BIFMA FF-1-78 NFPA 260-1989 UFAC, Class 1  
**treatments** ASR2000™ a soil and stain repellent finish

## Diamond



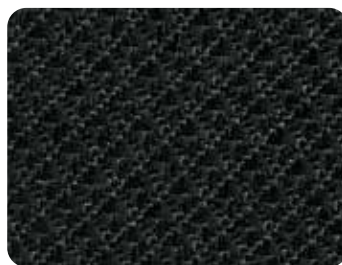
-296 | Blue Galaxy



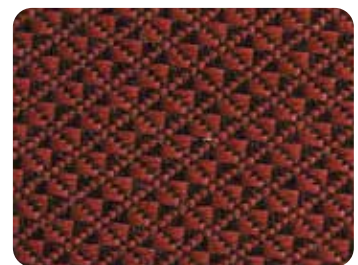
-294 | Gold Dust



-295 | Shale



-297 | Jet



-298 | Wine

**contents** 100% polyester • **surface abrasion** 50,000 double rubs • **break strength** warp 300 lbs, fill 300 lbs  
**flammability** CA Tech Bull. 117, Section E UFAC Class 1 NFPA 260 • **treatments** N/A

\*Due to differences in dye batches and variations in printing as well as viewing environments and uneven color fading there will be slight variations in color. Exact matching may not be possible.

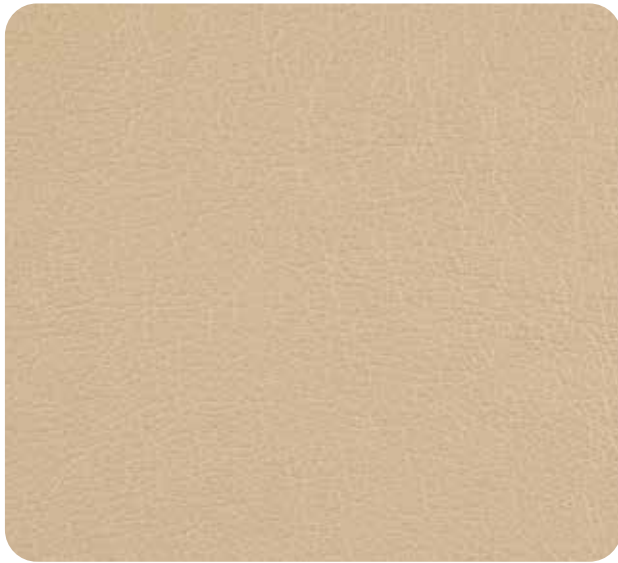
unbeatable service

grade | B  
fabric

healthcare

### Castillo Antimicrobial

Castillo is an i-clean™ fabric, engineered for extreme comfort, durability and ease of maintenance. Utilizing nano-based technology, spills bead up and sit on the surface until wiped away. This superior moisture & stain resistance helps keep furniture looking new. 200K double rubs. Cleans with water or solvent-based cleaners. Disinfects with 5:1 water/bleach solution.



-K001 | Buff



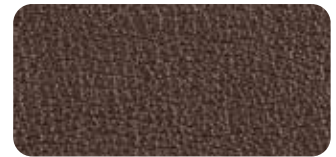
-K002 | Honeydew



-K003 | Breezy



-K004 | Cream



-K005 | Java



-K006 | Metal



-K007 | Batik

**contents** 100% polyurethane face; 87% polyester, 13% cotton back  
**surface abrasion** 200,000 double rubs • **light fastness** Class 4 • **color fastness** Class 4  
**flammability** CA TB #117-2013; UFAC Class 1; NFPA 260 Class 1; MVSS 302; IMO A.652(16) 8.2

### Twilight



-K008 | Cotton



-K009 | Sky



-K010 | Lily Pad



-K011 | Cocoa



-K012 | Brass



-K013 | Cherry



-K014 | Angora

**contents** 67% polyester, 33% nylon • **surface abrasion** 50,000 double rubs min. cotton duck • **backing** SBR backcoating • **break strength** 175 lbf min. warp & 130 lbf min fill • **flammability** CA Tech Bull. 117, Sec. E, NFPA 260/UFAC Fabric Classification Class 1 • **treatments** BLOCKaide® • **seam slippage** 55 lbf min. warp and 40 lbf min. fill • **tear** 10 lbf. warp and fill • **pilling resistance** Class 4 min. • **color fastness to light** grade 4 min. at 40 hrs

\*Due to differences in dye batches and variations in printing as well as viewing environments and uneven color fading there will be slight variations in color. Exact matching may not be possible.

## Fine Tune



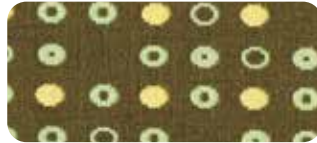
-K100 | Luna



-K101 | Onyx



-K102 | Ash



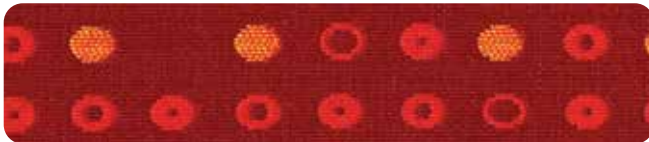
-K103 | Herb



-K104 | Cocoa



-K113 | Indigo



-K114 | Ruby



-K105 | Tangelo

**contents** 100% polyester • **surface abrasion** 40,000 double rubs  
**break strength** WARP 80 lbs, Fill 65 lbs • **flammability** CA Tech Bull. 117, Section E UFAC Class 1 NFPA 260 • **treatments** N/A

## City Park



-K106 | Birch



-K107 | Domino



-K108 | Steely



-K109 | Kiwi



-K110 | Walnut



-K111 | Marigold

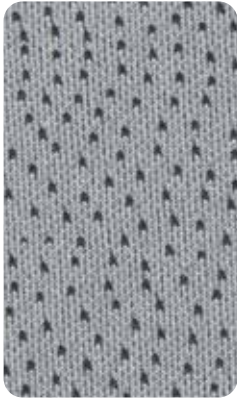
**contents** 100% polyester • **surface abrasion** 50,000 double rubs • **break strength** warp 90 lbs, fill 76 lbs  
**flammability** CA Tech Bull. 117, Section E UFAC Class 1 NFPA 260 • **treatments** N/A

\*Due to differences in dye batches and variations in printing as well as viewing environments and uneven color fading there will be slight variations in color. Exact matching may not be possible.

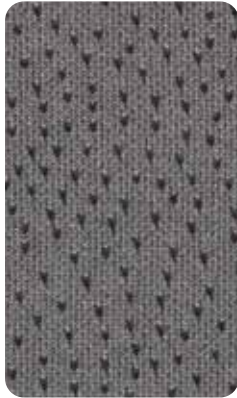
**unbeatable service**

**FreeFlex® Fabric** | "Comfort You Remember"

Introducing an innovative free-flex upholstery cover providing unmatched comfort. Featuring multi-directional stretching, this 100% polyester material form-fits cushions while allowing the foam to flex more than other upholstery materials. With this heightened stretch-and-return capability, FreeFlex® also contours to an individual's shape and weight for truly individualized comfort. There's no sacrifice in durability; FreeFlex® passes 70K double rubs in Wyzenbeek abrasion resistance testing.



-24 | Ember



-25 | Carbon



-26 | Azul



-27 | Camel



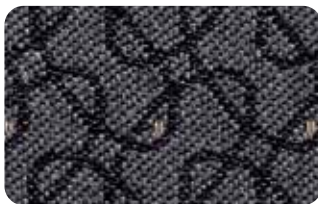
-30 | Coal

**contents** 100% polyester • **surface abrasion** 70,000 double rubs (Wyzenbeek ASTM D4157) • **lightfastness** 20 hours, Class 4.5 (AATCC Test Method 16E) • **colorfastness** Wet - Class 4.5, Dry - Class 4.5 (AATCC Test Method 8) • **flammability** CA Tech Bull. 117, Section E

**Transport**



-216 | Tuxedo



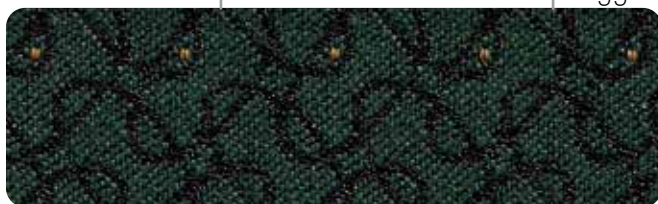
-217 | Ash



-218 | Inferno



-220 | Nugget



-214 | Ivy



-215 | Rapids

**contents** 58% polypropylene / 42% recycled polyester • **surface abrasion** 30,000 double rubs • **break strength** Warp 125 lbs. Fill 150 lbs. • **flammability** CA Tech. Bull 117, Section E UFAC Class 1, NFPA 260 Class 1 • **treatments** BLOCKaide™ a soil and stain repellent finish

\*Due to differences in dye batches and variations in printing as well as viewing environments and uneven color fading there will be slight variations in color. Exact matching may not be possible.



# B | grade fabric

unmatched selection

## Trinket



-74 | Cabernet



-75 | Charcoal Onyx



-78 | Cadet



-80 | Ebony

**contents** Face: 58% polyester / 42% acrylic Backing: 100% acrylic • **surface abrasion** heavy duty 45,000 cycles  
**break strength** Warp 73 lbs. Fill 50 lbs. • **flammability** CA 191-53 Tech. Bull 117, Section E UFAC Class 1  
**treatments** Teflon™ fabric protector only by DuPont® (Teflon™ is a registered trademark of DuPont®. Only DuPont® makes Teflon™)

## Crave



-363 | Black Triangle

**contents** 65% cotton / 35% polyester • **surface abrasion** 30,000 double rubs • **break strength** Warp 50 lbs. Fill 50 lbs. • **flammability** BIFMA X5.7 CA Tech. Bull 117, Section E • **treatments** stain repellent Superclear .5 oz.

# C | grade fabric

## NEW Dot Antimicrobial



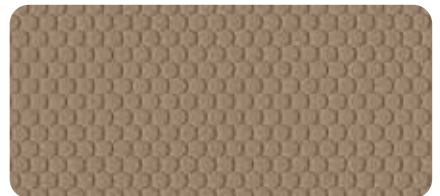
*Dot is an i-clean™ fabric, engineered for extreme comfort, durability and ease of maintenance. Utilizing nano-based technology, spills bead up and sit on the surface until wiped away. This superior moisture & stain resistance helps keep furniture looking new. Cleans with water or solvent-based cleaners. Disinfects with 5:1 water/bleach solution. Heavy-duty abrasion resistance.*



-K057 | Batik



-K058 | Black



-K059 | Fawn



-K060 | Grey

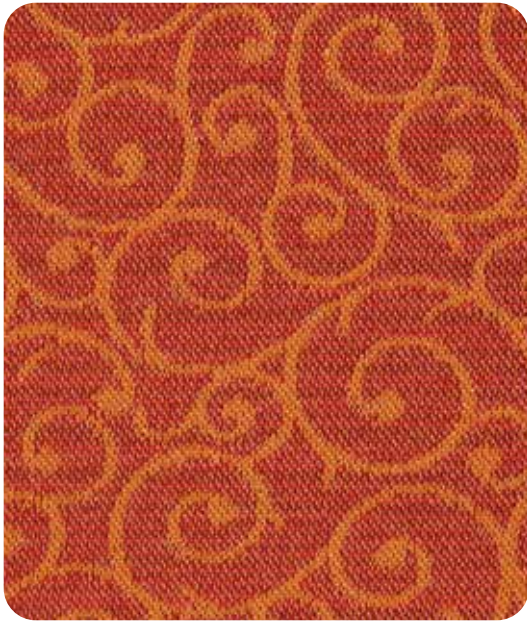


-K061 | River

**contents** 100% polyurethane face; 85% polyester, 15% cotton back  
**surface abrasion** 200,000 double rubs • **light fastness** Class 4 • **color fastness** Class 4  
**flammability** CA TB #117-2013; UFAC Class 1; NFPA 260 Class 1; MVSS 302

\*Due to differences in dye batches and variations in printing as well as viewing environments and uneven color fading there will be slight variations in color. Exact matching may not be possible.

\*recommended for lounge seating **Tracery**



-K026 | Persimmon



-K021 | Khaki



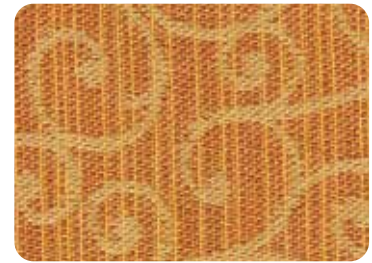
-K022 | Chestnut



-K023 | Taupe



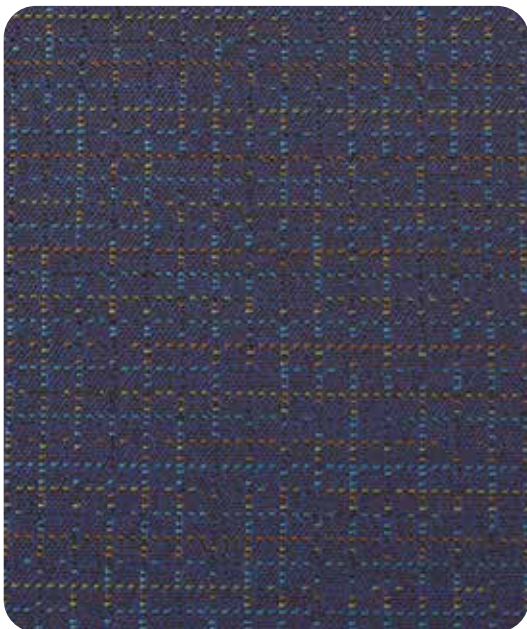
-K024 | Azure



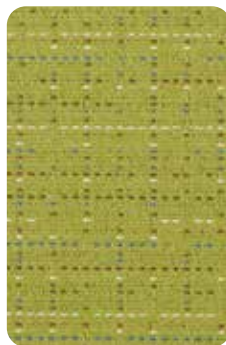
-K025 | Golden

**contents** 100% recycled polyester • **surface abrasion** 75,000 double rubs min. cotton duck • **backing** acrylic • **tear** 10 lbf. warp and fill • **break strength** 175 lbf min. warp & 100 lbf min fill • **flammability** CA Tech Bull. 117, Sec. E, NFPA 260/UFAC Fabric Classification Class 1 • **treatments** BLOCKaide®  
**seam slippage** 60 lbf min. warp and fill • **tear** 10 lbf. warp and fill • **pilling resistance** Class 4 min. • **color fastness to light** grade 4 min. at 40 hrs

## Couture



-K052 | Tailor



-K055 | Thread



-K054 | Thimble



-K053 | Basting



-K056 | Seam

**contents** 57% post-consumer recycled polyester, 25% pre-consumer recycled polyester, 18% polyester • **weight** 9.2±1.0 oz/lin. yd. • **width** 54" min. useable • **repeat** 14.5" vertical, 14" horizontal • **backing** acrylic backcoating • **treatment** stain repellent • **breaking strength** 115lbf min. warp and 85 lbf min. fill • **tear** 25 lbf warp and 30 lbf min. fill • **seam slippage** 55 lbf warp and 60 lbf fill • **pilling resistance** class 5 • **colorfastness to light** grade 4 min. at 40 hrs • **colorfastness to crocking** grade 4 min. dry & grade 3 min. wet • **wyzenbeek abrasion resistance** 100,000 double rubs cotton duck  
**flammability** CA Tech Bull. 117-2013, Sec. 1, NFPA 260/UFAC Fabric Classification Class 1, ASTM E84

\*Due to differences in dye batches and variations in printing as well as viewing environments and uneven color fading there will be slight variations in color. Exact matching may not be possible.

## Key Largo Antimicrobial



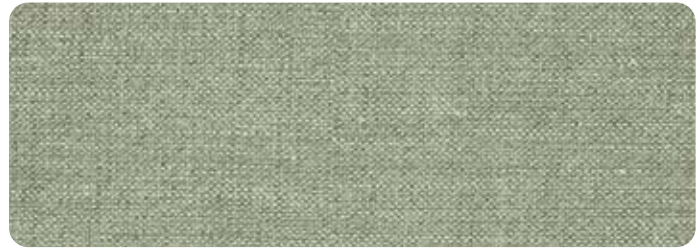
Engineered for maximum performance in the most extreme healthcare environments. Features Resilience SR finish that inhibits bacterial growth as well as fungus, mold, mildew and spores for a more hygienic environment. Passes 250,000 double-rub abrasion testing. GREENGUARD certified.



-K038 | Chocolate



-K039 | Palm



-K040 | Aqua



-K041 | Sand



-K042 | Parchment



-K043 | Tangerine

**contents** 100% PVC vinyl • **surface abrasion** passes 250,000 double rubs • **backing** 100% brushed polyester knit • **break strength** min warp 79, fill 56 • **flammability** passes NFPA 260 (equiv. to UFAC), Class 1, Cal. 117, Sec. E, ASTM E84 Class 2 or B (adhered), BIFMA, FMVSS 302, IMO A.652 (16) 8.2 & 8.3, may comply with Cal. Tech. Bull. 133 when combined with appropriate components • **pilling resistance** Class N/A • **color fastness to light** 1000 hrs



**Recycled Fabric 100% Recycled.** Wherever chairs are identified with our CF graphic, you can select 100% recycled polyester fabrics from our Cosmopolitan, Champagne, and Elements collections. All surpass 100,000 double-rub durability testing as well as CAL 117, NFPA 260 and UFAC Class 1 flammability standards, so you can protect your immediate environment as well as our planet. That's big-picture thinking. See your choices at [www.officestar.net/fabrics](http://www.officestar.net/fabrics)

## Element



-899 | Smoke



-900 | Putty



-901 | Plum



-902 | Sapphire



-903 | Earth

**contents** 100% recycled polyester • **surface abrasion** 130,000+ double rubs • **break strength** min warp 100 lbs, min fill 100 lbs • **flammability** CA Tech Bull. 117, Section E UFAC Class 1 NFPA 260 Class 1 • **treatments** N/A

\*Due to differences in dye batches and variations in printing as well as viewing environments and uneven color fading there will be slight variations in color. Exact matching may not be possible.

unbeatable **service**

**\*\*fabric and finishes**

Faux Leather



-B18 | Black



-E34 | Espresso



-U9 | Red



-U22 | Smoke



-W32 | White

**contents** 60% Elastane Fiber and 40% Segmented Polyurethane • **flammability** CA Tech Bull. 117

Woven

Applicable to:  
MST Series



-C28 | Woven Wheat



-S22 | Woven Seaweed



-W12 | Woven Charcoal



-W17 | Woven Indigo

**contents** 46% polyester, 18% viscose, 36% cotton • **surface abrasion** over 50000 cycles • **break strength** min warp 190 lbs, weft 120 lbs  
**flammability** CA Tech Bull. 117 • **treatments** middle punch+coating • **seam slippage** warp 25 lbs, weft 32 lbs  
**pilling resistance** Class 4 • **color fastness to light** grade 4 at 20 hrs

Mid-Century Solids

Applicable to: CPR51, PAC Fabric Series and RHD51



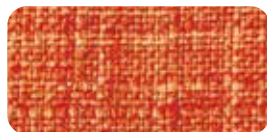
-M17 | Green



-M21 | Blue



-M55 | Dove



-M5 | Tangerine



-M18 | Taupe



-M19 | Navy



-M52 | Cream



-M59 | Cement

**contents** 100% polyester • **surface abrasion** warp & weft over 30,000 cycles (ASTM-D-4157) • **break strength** warp and weft over 50 lbs. (ASTM D5034) • **flammability** CA Tech Bull. 117-2013 • **seam slippage** over 50 lbs (ASTMD 1683) • **pilling resistance** no yarn rupture @300 cycles (ASTM D3514) • **color fastness to light** dry crocking 4.5, wet crocking 4 (AATC 116) • **color to light** grade 4 at 20 hours

Milford

Applicable to:  
WD483



-M24 | Dove



-M25 | Toast



-M48 | Asphalt

**contents** 100% polyester • **surface abrasion** 45000 rubs • **flammability** CA TB117-2013 • **seam slippage** over 50 lbs. • **break strength** warp and weft over 50 lbs. • **color fastness to crocking** dry 4 class, wet 4 class • **fastness to light** 4 at 20 hours

Idea

Applicable to:  
CHA51



-V36 | Midnight Green



-V37 | Charcoal



-V38 | Midnight Blue

**contents** 100% polyester • **abrasion** over 15000 rubs • **flammability** CA Tech Bull. 117 -2013 • **seam slippage** over 70 lbs. • **color fastness to crocking** dry 4 class, wet 4class • **fastness to light** 4 at 20 hours • **pilling resistance** 4 class

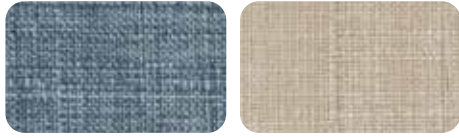
**\*\*Swatches on this page are offered on finished goods only and not part of the custom fabric program**

# In-Stock fabric and finishes\*\*

unmatched selection

## Linen

Applicable to: ETN & ATH Series



-L37 | Blue Denim

-L38 | Linen

**contents** 100% polyester • **surface abrasion** 40,000 rubs • **break strength** 140 lbs warp, 170 lbs fill • **flammability** CA Tech Bull. 117  
**seam slippage** warp 50 lbs, weft 45 lbs  
**pilling resistance** Class 4 • **color fastness to light** grade 4 at 40 hrs

## Deluxe Faux Leather

Applicable to: ETN Series



-PD22 | Cranberry

-PD24 | Cocoa

-PD26 | Pewter

**contents** 40% polyurethane, 60% TC fabric • **surface abrasion** 2,000 double rubs  
**break strength** min warp 50 lbs, min fill 50 lbs • **flammability** CA Tech Bull. 117  
**seam slippage** warp 45 lbs, weft 45 lbs • **color fastness to light** grade 4 at 20 hrs

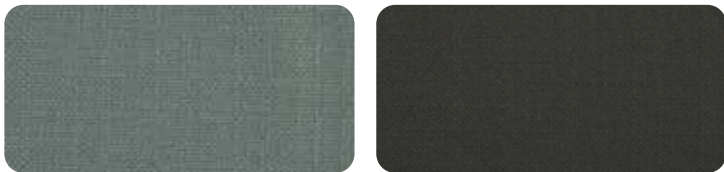
## Solid Colors

Applicable to: DVS51, SHE and ATH



-K12  
Otter

-K14  
Azure



-K21  
Sea

-K26  
Charcoal

**contents** 100% polyester  
**surface abrasion** over 50,000 cycles • **break strength** min warp 280 lbs, weft 180 lbs • **flammability** CA Tech Bull. 117 • **treatments** knitted fabric backing • **seam slippage** warp 41 lbs, weft 46 lbs  
**pilling resistance** Class 5 • **color fastness to light** grade 4 at 20 hrs

Applicable to: DVS51, ATH, SHE & VN Series



-L32  
Linen

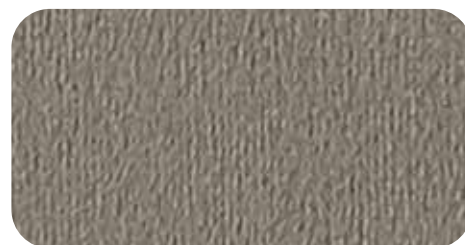
**contents** 80% polyester, 20% linen • **surface abrasion** over 25,000 cycles • **break strength** min warp 250 lbs, weft 150 lbs • **flammability** CA Tech Bull. 117 • **seam slippage** warp 35 lbs, weft 45 lbs • **pilling resistance** Class 4  
 • **color fastness to light** grade 4 at 40 hrs

## Velvets

Applicable to:  
VN Series



-V14  
Azure  
Velvet



-V17  
Otter  
Velvet

**contents** 100% polyester • **surface abrasion** 40,000 double rubs (cotton duck) • **break strength** min warp 200 lbs, min fill 250 lbs • **flammability** CA Tech Bull. 117 • **seam slippage** warp 45 lbs, weft 35 lbs • **pilling resistance** Class 4 • **color fastness to light** grade 4 at 40 hrs

\*\*Due to differences in dye batches and variations in printing as well as viewing environments and uneven color fading there will be slight variations in color. Exact matching may not be possible.