

CF CUSTOM • FABRIC PROGRAM

AVAILABLE FABRICS

custom fabric program | Choices in Fabric. Wherever chairs are identified with our CF graphic, you have hundreds of choices in fabric. Solids, patterns and textures. Simple and complex. Vinyls. Hospitality/healthcare-safe performance fabrics. Recycled selections. Choices for every environment. Many are IN STOCK. You can also choose C.O.M. (customer's own material). Digital representations of fabrics are available at www.officestart.net **Custom Fabrics require additional lead time.**

Grade A

Linen
Colored Mesh
Dove • Dillon
Ridgecrest
Gavotte
Interlink
Icon • Diamond

Grade B

Castillo
Twilight
Fine Tune
City Park
FreeFlex®
Transport
Trinket
Crave

Grade C

Dot
Tracery
Couture

Grade R

Key Largo
Element



A | grade fabric



-F23 | Black



-F14 | Mauve

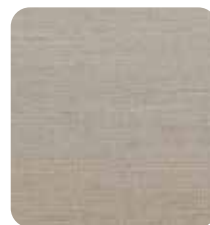
-F8 | Lime



-F10 | Orange



-F22 | Stone



-F25 | Sand

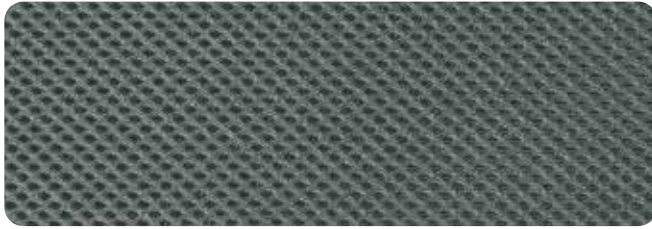


-F28 | Turquoise

- **contents** 100% polyester • **surface abrasion** 70,000 double rubs (Wyzenbeek), 50,000 double rubs (Martindale) •
- **lightfastness** 40 hours: dark colors, 3.5 hours: light colors Class 4 (AATCC Test Method 16E) •
- **colorfastness** Wet - Class 3.5, Dry - Class 4 (AATCC Test Method 8) • **flammability** TB117-2013

*Due to differences in dye batches and variations in printing as well as viewing environments and uneven color fading there will be slight variations in color. Exact matching may not be possible.

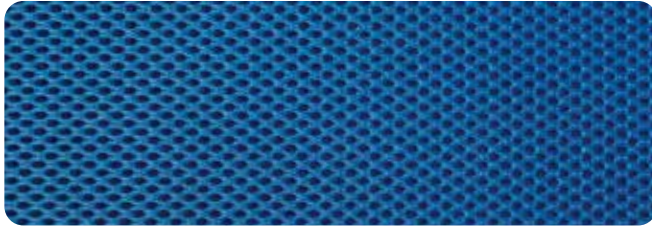
Colored Mesh



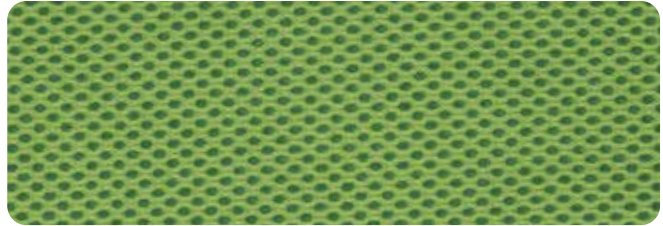
-2M | Grey



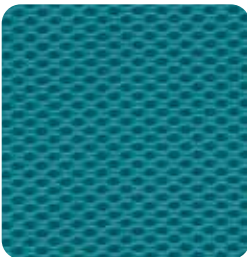
-3M | Black



-5 | Royal Blue



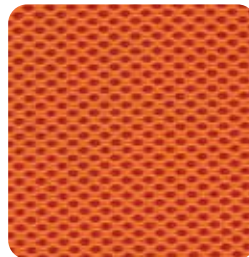
-6 | Green



-7 | Blue



-9 | Red



-18 | Orange



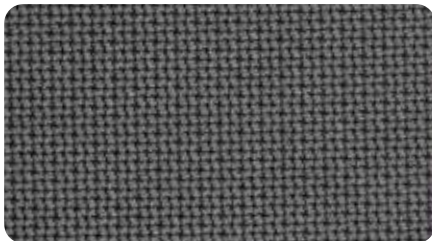
-261 | Pink



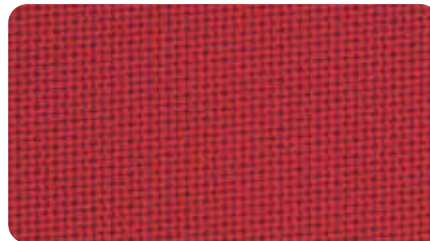
-512 | Purple

• contents 100% polyester • flammability CAL117•

Dove



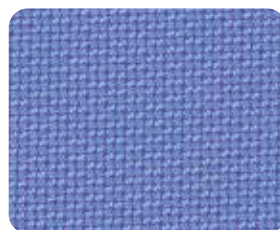
-5811 | Steel



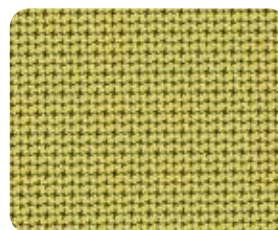
-5812 | Rouge



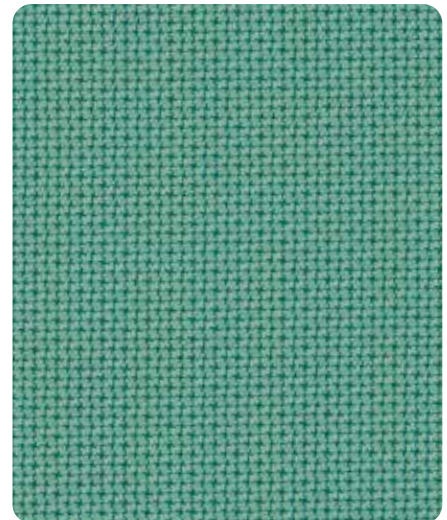
-5819 | Violet



-5877 | Sky



-5879 | Olive



-5881 | Jade

- contents 70% polyester, 30% cotton • surface abrasion 70,000 double rubs (Wyzenbeek), 35,000 double rubs (Martindale) •
- lightfastness 40 hours, Class 4 (AATCC Test Method 16E) • colorfastness Wet - Class 4.5, Dry - Class 4 (AATCC Test Method 8) •
- flammability Cal. 117, Section E, CS-191-53, Class 1 BIFMA FF1-78, NFPA 260-1989, UFAC, Class 1, B.S. 5852 Part 1: 1979 Ignition Source 0, Smouldering Cigarette

*Due to differences in dye batches and variations in printing as well as viewing environments and uneven color fading there will be slight variations in color. Exact matching may not be possible.

Dillon Antimicrobial



Promotes clean, safe environments with industry-leading Silver Ion Technology that kills and inhibits bacterial growth by 99.9% for continuous protection against microbes, pathogens and more. Easy-clean with water or solvent-based cleaners. Disinfects with 5:1 water/bleach solution. PVC free. Phthalate and lead compliant. Heavy-duty 200,000 double-rub abrasion resistance.



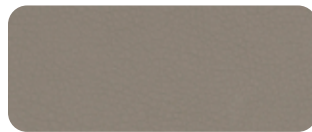
-R100 | Lipstick



-R101 | Snow



-R102 | Java



-R103 | Stratus



-R104 | Buff



-R105 | Blue



-R106 | Sage



-R107 | Black



-R111 | Graphite



-R112 | Steel

contents 100% polyurethane face; 70% polyester, 30% cotton back • **surface abrasion** 200,000 double rubs • **light fastness** Class 4
color fastness Class 4 • **flammability** CA TB #117-2013; UFAC Class 1; NFPA 260 Class 1; MVSS 302; IMO A.652(16) 8.2

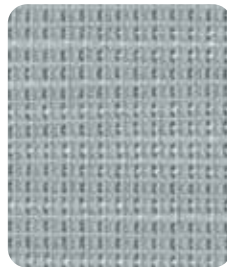
Ridgecrest



-K015 | Meadow



-K016 | Beach



-K017 | Tide Pool



-K018 | Putty



-K019 | Chocolate

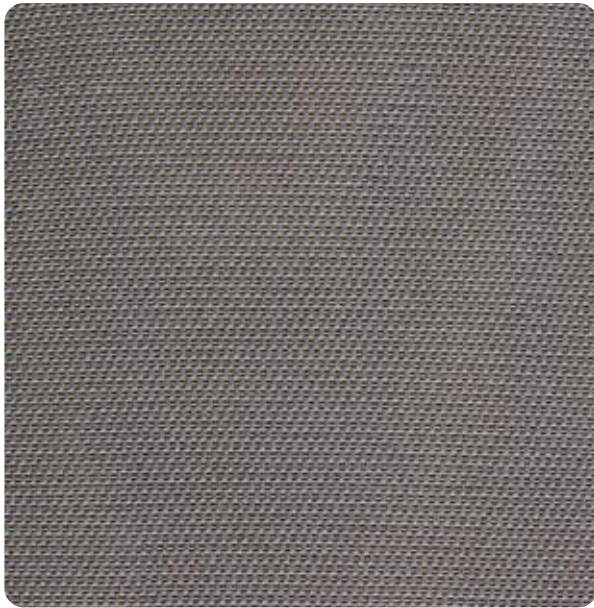


-K020 | Ink

contents 100% polyester • **surface abrasion** exceeds 100,000 cycles (Wyzenbeek-#10 cotton duck abradant) • **backing** acrylic
break strength WARP 80 lbs, WEFT 68 lbs (ASTMD4034) • **seam slippage** WARP 84 lbs, WEFT 72 lbs (ASTMD4034)
light fastness class 4/40 hrs min (AATCC16A) • **color fastness** Class 4 (ASTM D3597, AATC 8) Wet, Class 5 (ASTM D3597, AATCC 8) Dry • **flammability** CA Tech Bull. 117, Section E (CS-191-153) UFAC Class 1

*Due to differences in dye batches and variations in printing as well as viewing environments and uneven color fading there will be slight variations in color. Exact matching may not be possible.

Gavotte



-895 | Grey



-894 | Blue



-896 | Taupe



-897 | Burgundy

contents 100% polyester • **surface abrasion** 30,000 cycles (cotton duck)
break strength warp 96 lbs, fill 99 lbs • **flammability** CA Tech Bull. 117, Section E • **treatments** N/A

Interlink



-104 | Ink Blue



-106 | Laguna



-107 | Flint



-108 | Autumn



-105 | Garnet

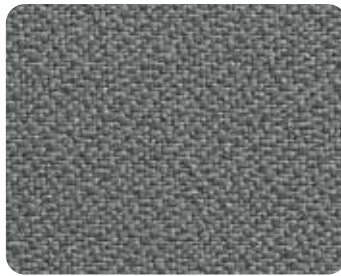
contents 100% Olefin backing: latex • **surface abrasion** 30,000+ double rubs • **break strength** warp 100 lbs, fill 125 lbs
flammability CA Tech Bull. 117, Section E UFAC Class 1 BIFMA, Class 1 • **treatments** **BLOCKaide™** a soil and stain repellent finish

*Due to differences in dye batches and variations in printing as well as viewing environments and uneven color fading there will be slight variations in color. Exact matching may not be possible.

Icon



-225 | Navy



-226 | Grey



-227 | Burgundy



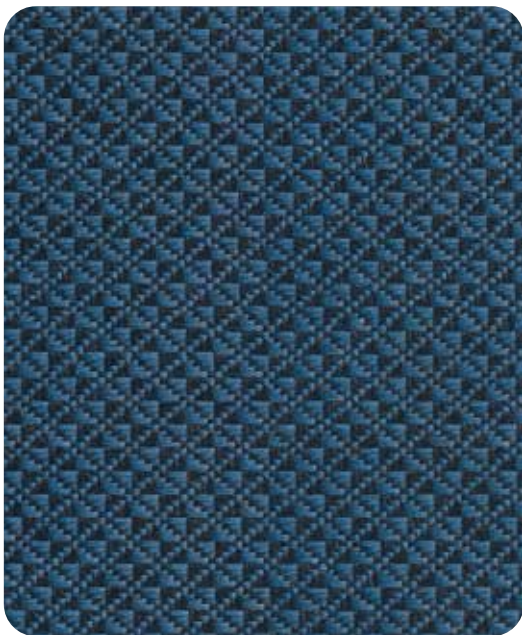
-231 | Black



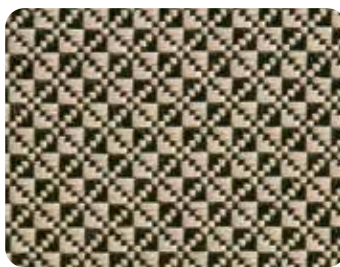
-232 | Taupe

contents 100% polyester • **surface abrasion** 400,000 double rubs (Wyzenbeek ASTM-D-4157)
break strength warp 150 lbs, fill 88 lbs • **flammability** CA Tech Bull. 117, Section E BIFMA FF-1-78 NFPA 260-1989 UFAC, Class 1
treatments ASR2000™ a soil and stain repellent finish

Diamond



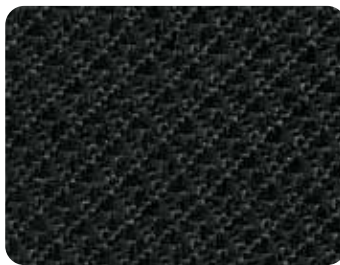
-296 | Blue Galaxy



-294 | Gold Dust



-295 | Shale



-297 | Jet



-298 | Wine

contents 100% polyester • **surface abrasion** 50,000 double rubs • **break strength** warp 300 lbs, fill 300 lbs
flammability CA Tech Bull. 117, Section E UFAC Class 1 NFPA 260 • **treatments** N/A

*Due to differences in dye batches and variations in printing as well as viewing environments and uneven color fading there will be slight variations in color. Exact matching may not be possible.