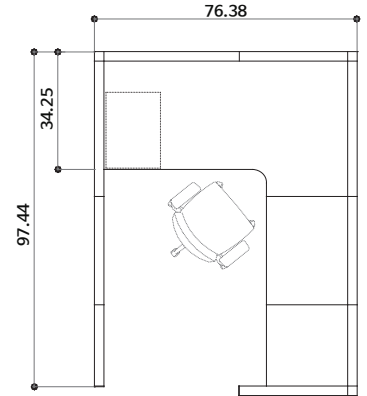


SET MODEL# INWS0608L

Typical Workstation



3D Layout



TOP VIEW

*The color code on the image:
Upper Fabric : D1-005
Lower Fabric : D1-014
Frame : silver

Desk Surface : MAH(Mahogany)

*The color may differ from the actual color.

Part List

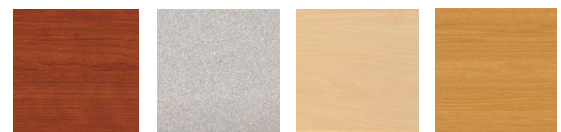
KEY	ITEM#	DESCRIPTION	DESCRIPTION	QTY	UOM
PARTITION SYSTEM					
A	TT0612AC	PARTITION SYSTEM 70T	23.62"x 2.76" x 45.67"	2	EA
B	TT0812AC	PARTITION SYSTEM 70T	31.5"x 2.76" x 45.67"	4	EA
C	TT1012AC	PARTITION SYSTEM 70T	39.37"x 2.76" x 45.67"	3	EA
D	P12L	L POST BAR	2.76"x 2.76" x 44.88"	3	EA
E	E12	END BAR	0" x 0" x 44.88"	2	EA
FURNITURE					
F	INSR18100608M	L-SHAPED DESK(R)	70.87"x 39.37" x 1.18"	1	EA
G	INS0806M	DESK TOP	31.5"x 23.62" x 1.18"	1	EA
H	BYB123M	Pencil/Box/File Pedestal	15.94"x 22.05" x 25.98"	1	EA
I	BYC1252FRM	COMBINATION CABINET	23.62"x 23.62" x 47.24"	1	EA
J	AK04Z	ONE KEY SYSTEM	0" x 0" x 0"	1	EA
BRACKETS					
	H100L	HANGING BRACKET	0" x 0" x 0"	1	EA
	H100R	HANGING BRACKET	0" x 0" x 0"	1	EA
	H200R	HANGING BRACKET	0" x 0" x 0"	1	EA
	H500L	HANGING BRACKET	0" x 0" x 0"	2	EA
	H500R	HANGING BRACKET	0" x 0" x 0"	2	EA
	H001	FLAT BRACKET	0" x 0" x 0"	1	EA

*Assembly required

Specification

- SPACE REQUIREMENT : 6' x 6' WORKSTATION
- DIMENSION : 76.38" x 97.44"
- MATERIAL : Frame (Aluminum Steel: 2.76")
Post/Top/End Bar&Base(Aluminum Steel)
Work Surface (HPM : High Pressure Melamine)
Counter Top (HPM : High Pressure Melamine)
- WARRANTY : Limited Lifetime Warranty
- TERMS and CONDITION : Available
- DELIVERY TERM : FOB Origin

HPM COLOR OPTION :

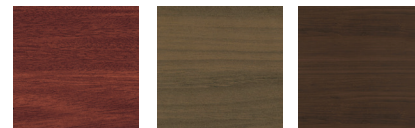


BHY
Brown Cherry

MGY
Mid Gray

MAP
Maple

BCH
Beech



MAH
Mahogany

WAL
Walnut

VWAL
Dark Walnut

*Partition color : Available upon request.