

SPARROW TEE

SIZE 6 - 20

3 PATTERN PIECES

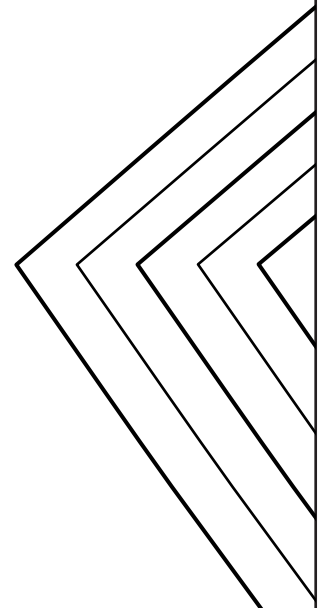
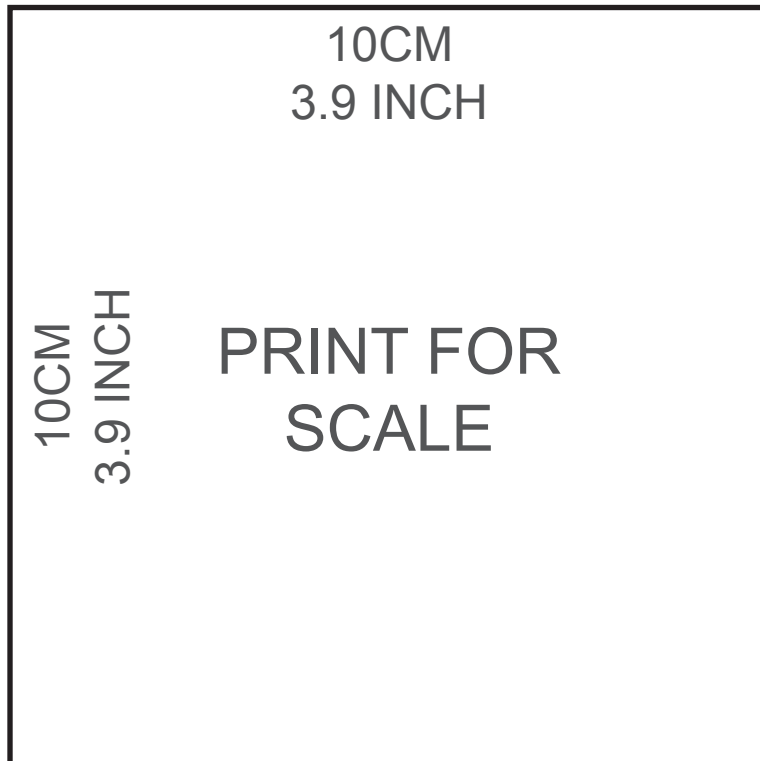
1 _TEE FRONT	CUT ONE ON FOLD
2 _TEE BACK	CUT ONE ON FOLD
3 _TEE SLEEVE	CUT ONE PAIR

Note*

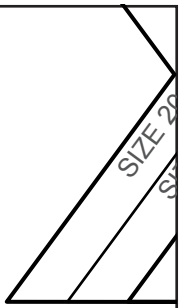
There is no pattern peice for the neckline binding. For this you will need to cut a 4cm (1.6 inch) wide strip the length of your neckline. Cut with the fabric stretch going length ways.

REQUIRED NOTIONS

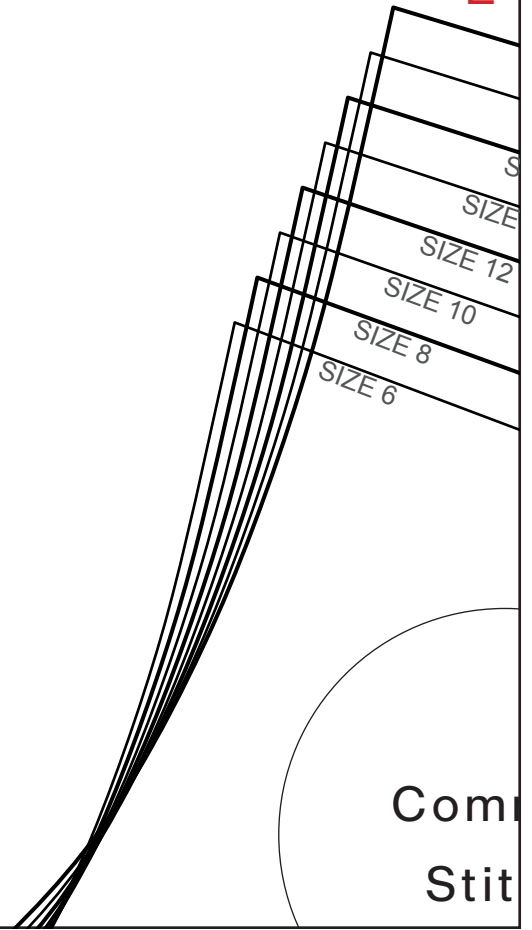
_THREAD



2



E



2

Com
Stit

2

20
18
16
14
12
10
8
6

J

SPARROW TEE FRONT

CUT ONE ON FOLD

6mm SEAM ALLOWANCE
(0.2 inch)



2



CENTRE FRONT

PLACE ON FOLD

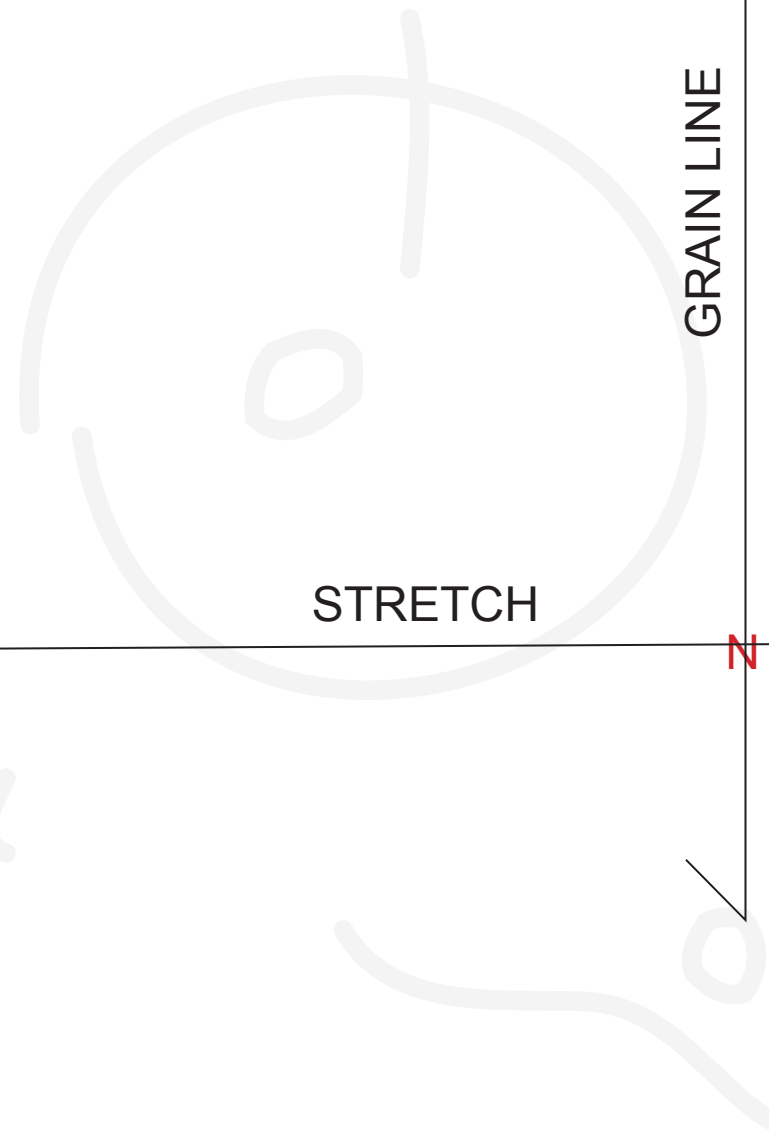
2

STRETCH

GRAIN LINE

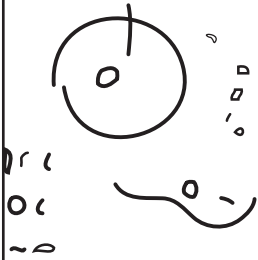
2

2



2

R




common stitch.

hand made in Australia

w: www.commonstitch.com.au

e: hello@commonstitch.com.au

 [common_stitch](https://www.instagram.com/common_stitch)

2

3

A

B

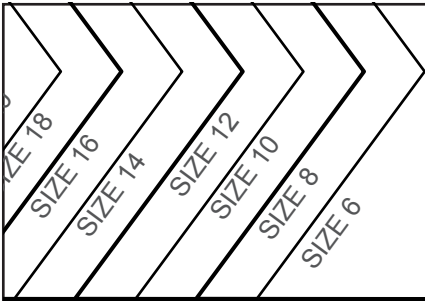
SPARROW TEE SLEEVE

CUT ONE PAIR

6mm SEAM ALLOWANCE
(0.2 inch)

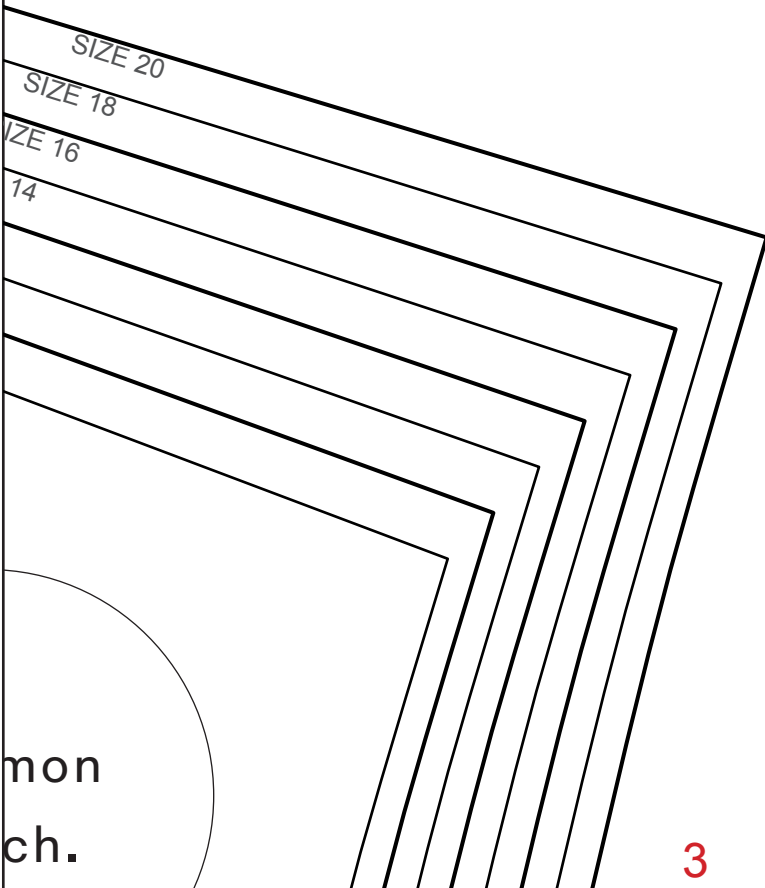
3



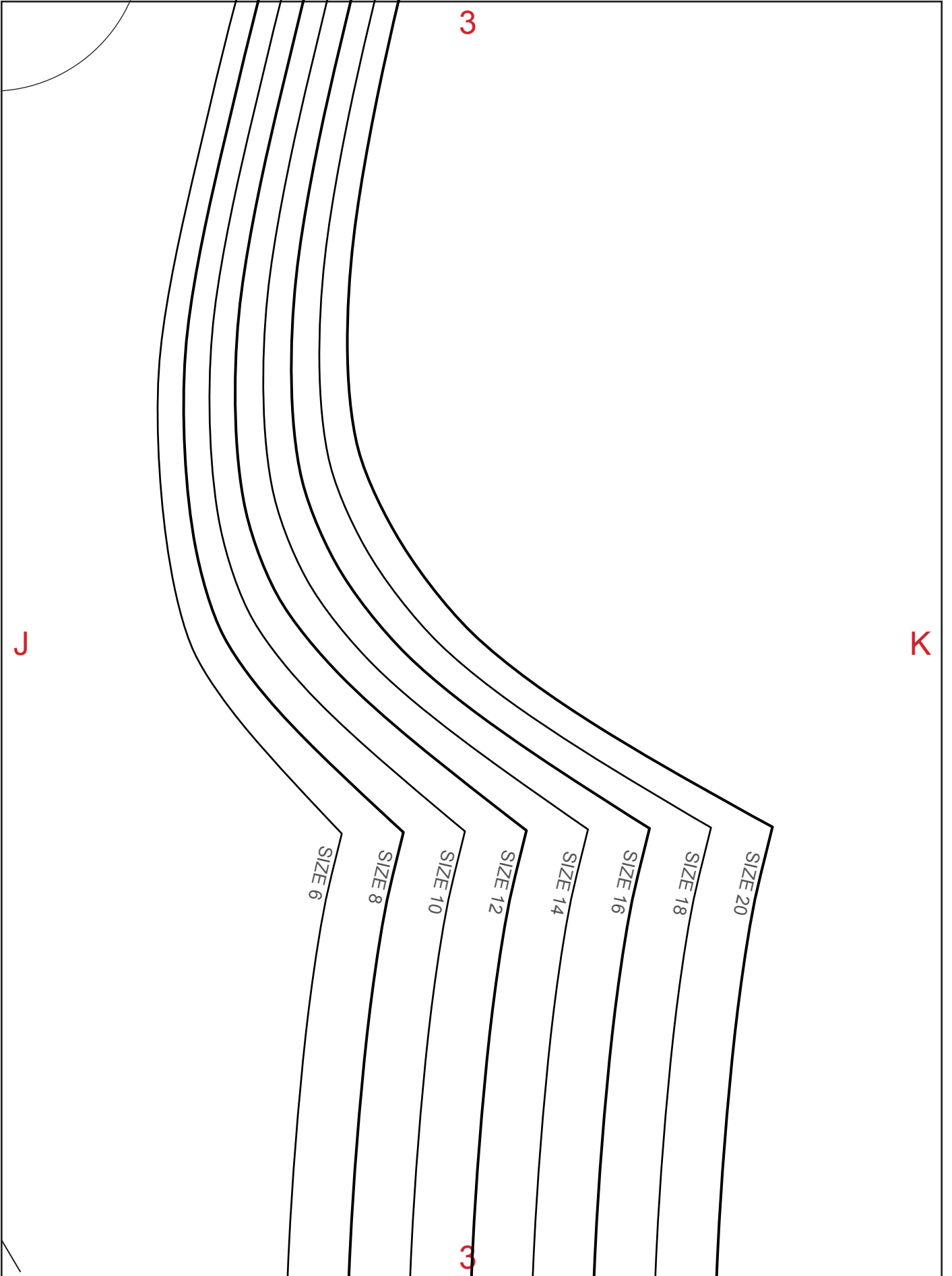


E

F



3



J

K

3

3

SIZE 6

SIZE 8

SIZE 10

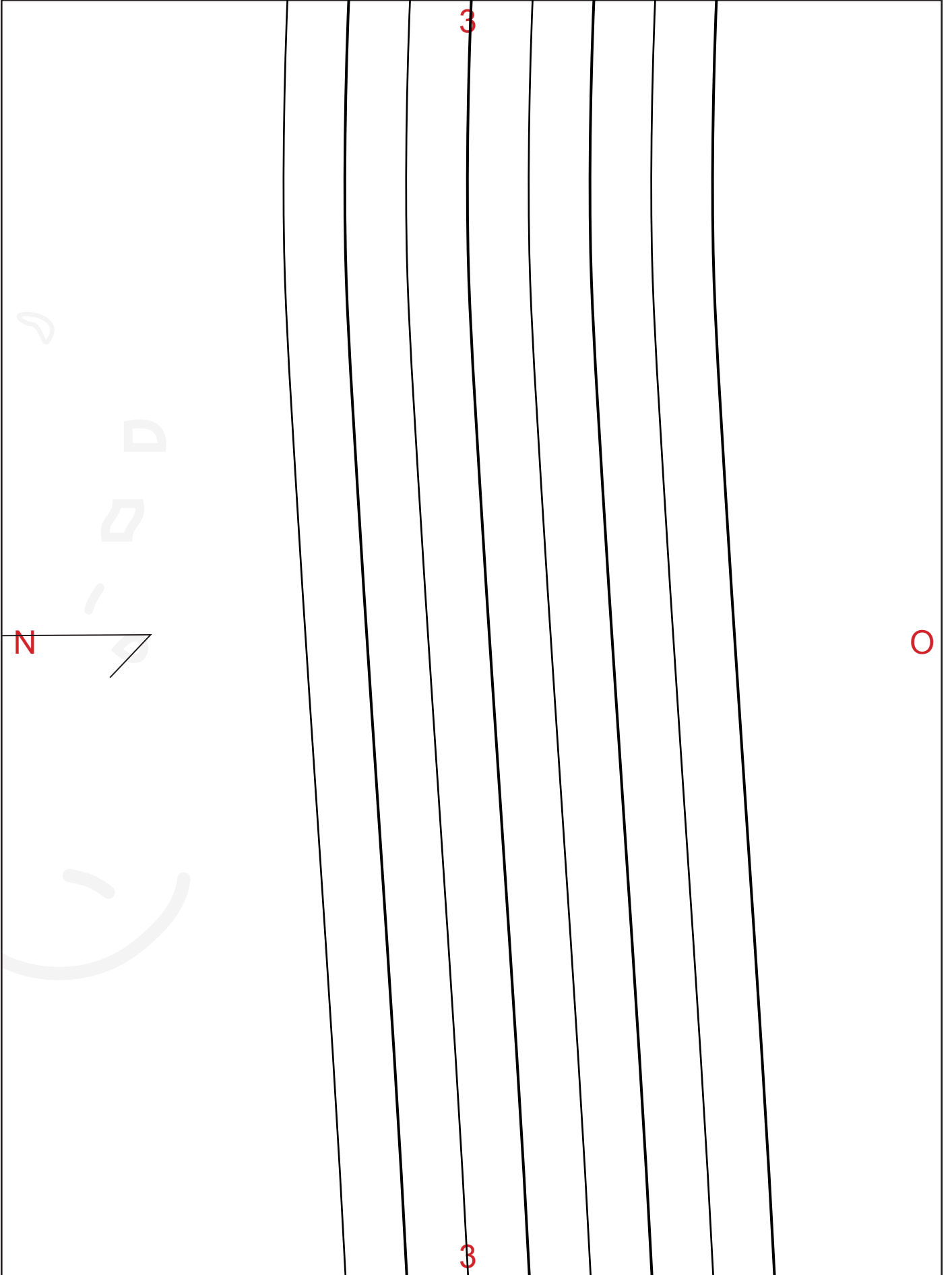
SIZE 12

SIZE 14

SIZE 16

SIZE 18

SIZE 20



S

SIZE 20

SIZE 18

SIZE 16

SIZE 14

SIZE 12

SIZE 10

SIZE 8

SIZE 6

3

3

R

4

SIZE 20
SIZE 18
SIZE 16
SIZE 14
SIZE 12
SIZE 10
SIZE 8
SIZE 6

B

C

GRAIN LINE

Comm
Stitc

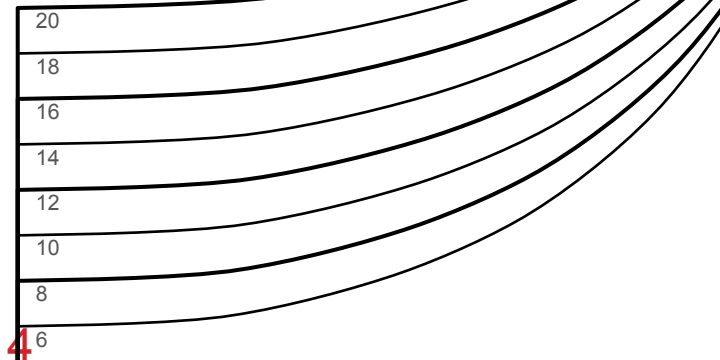
STRETCH

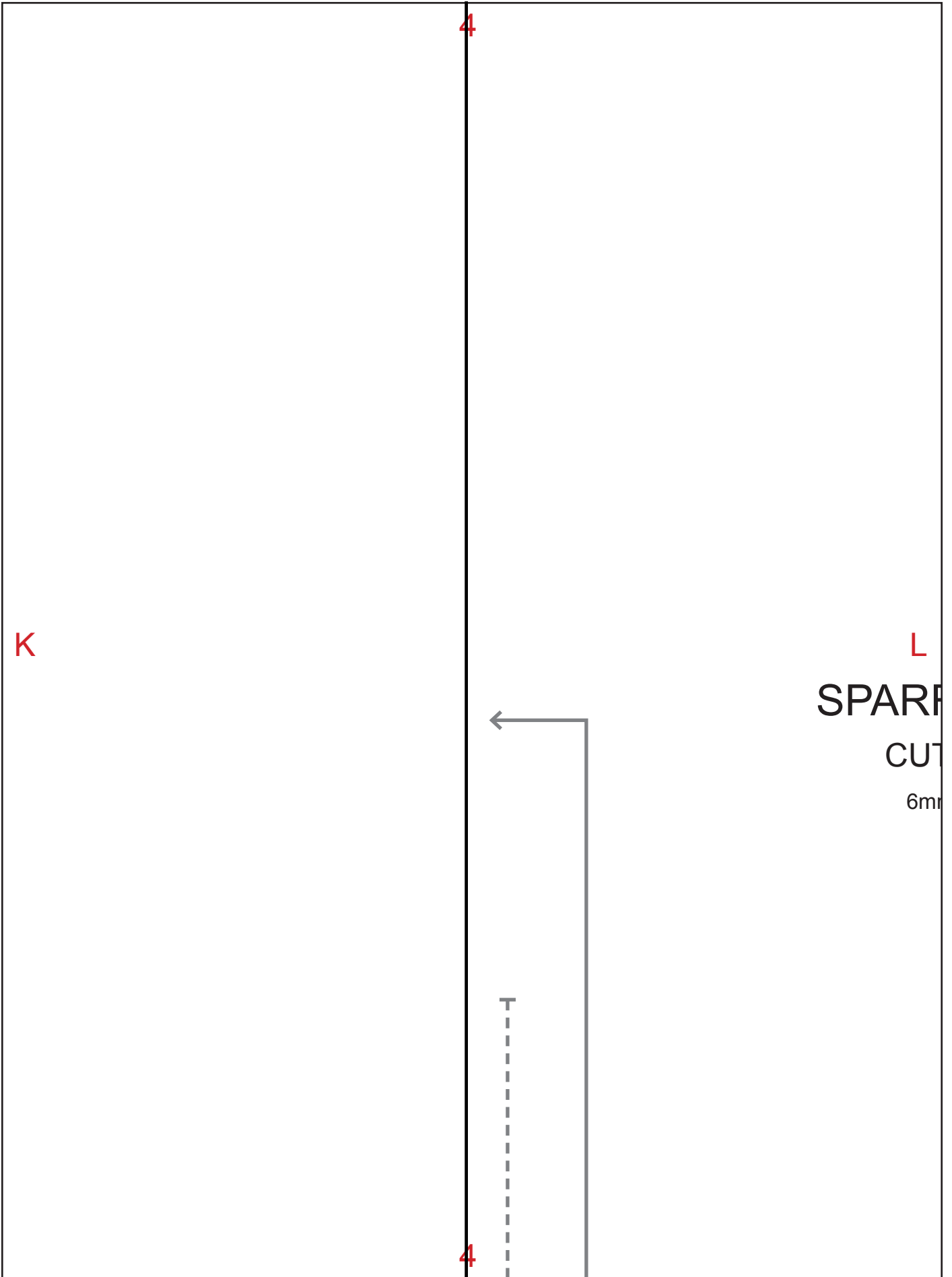
4

4

F

G





K

4

L

SPAR

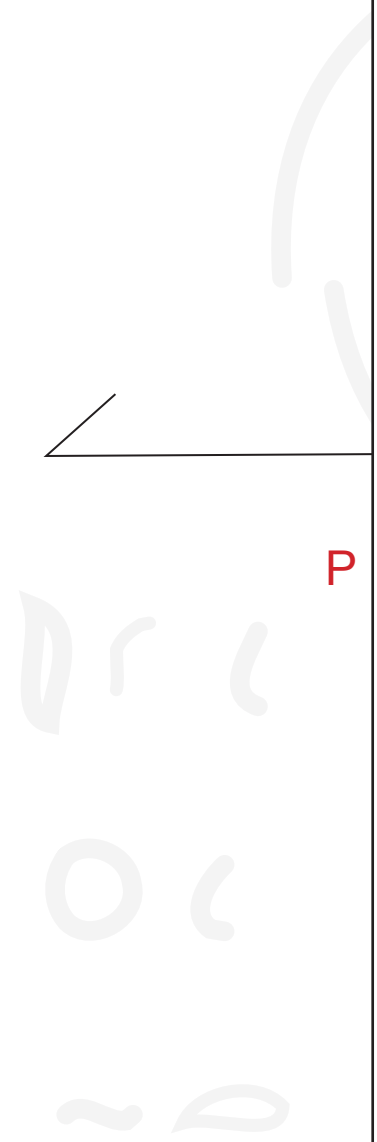
CUT

6mm



T

4



P

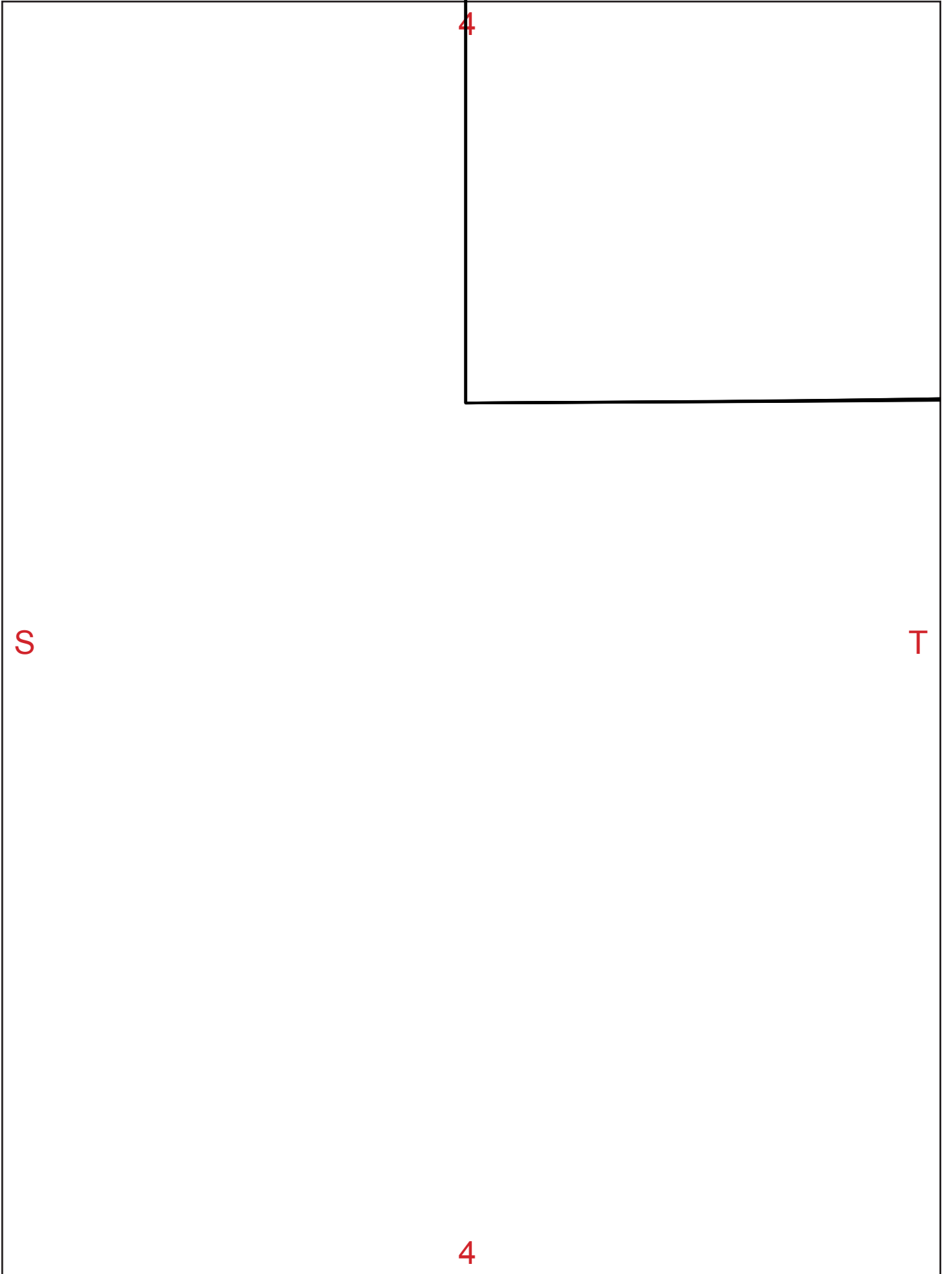
PLACE ON FOLD

CENTRE BACK

4

4

O



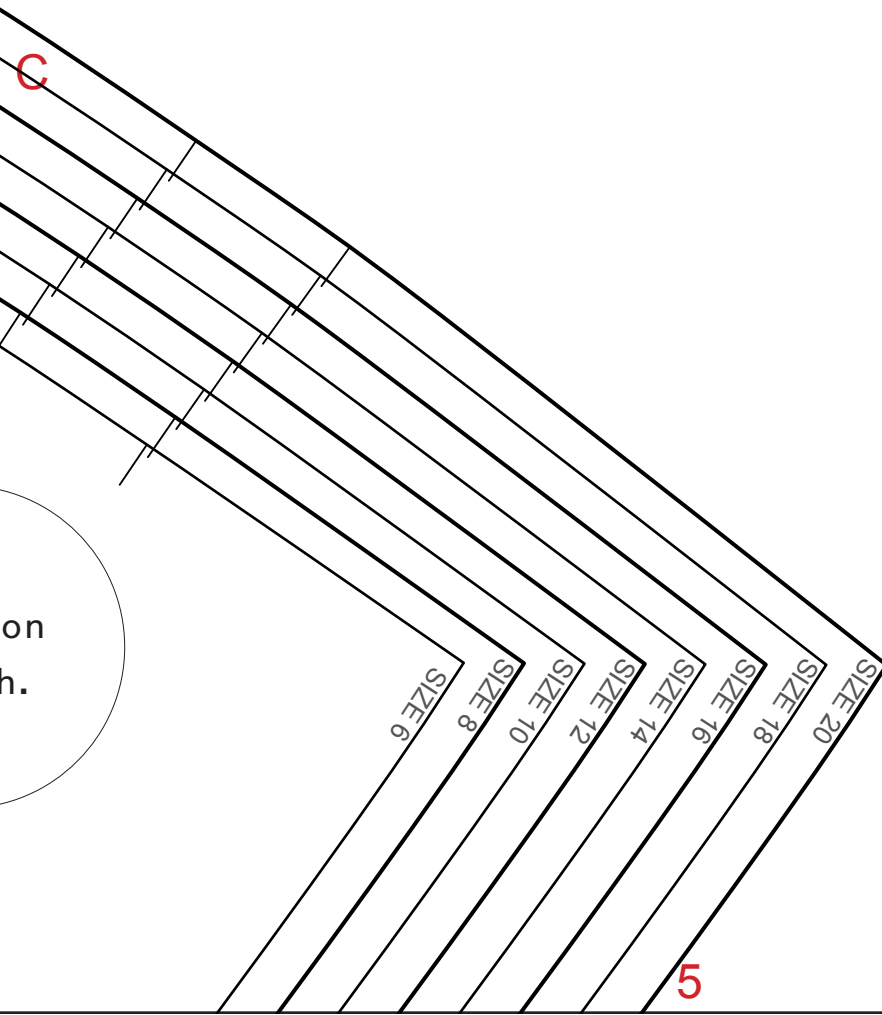


Co

S

5

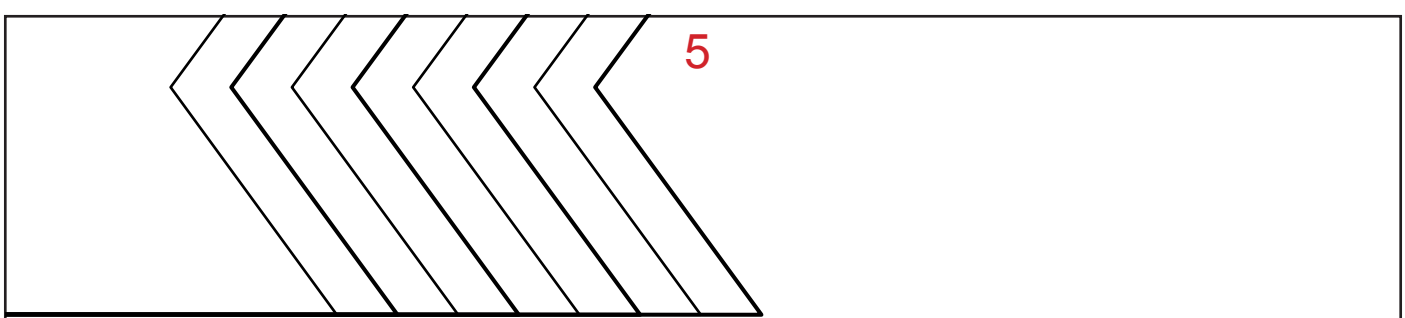
D



on
h.

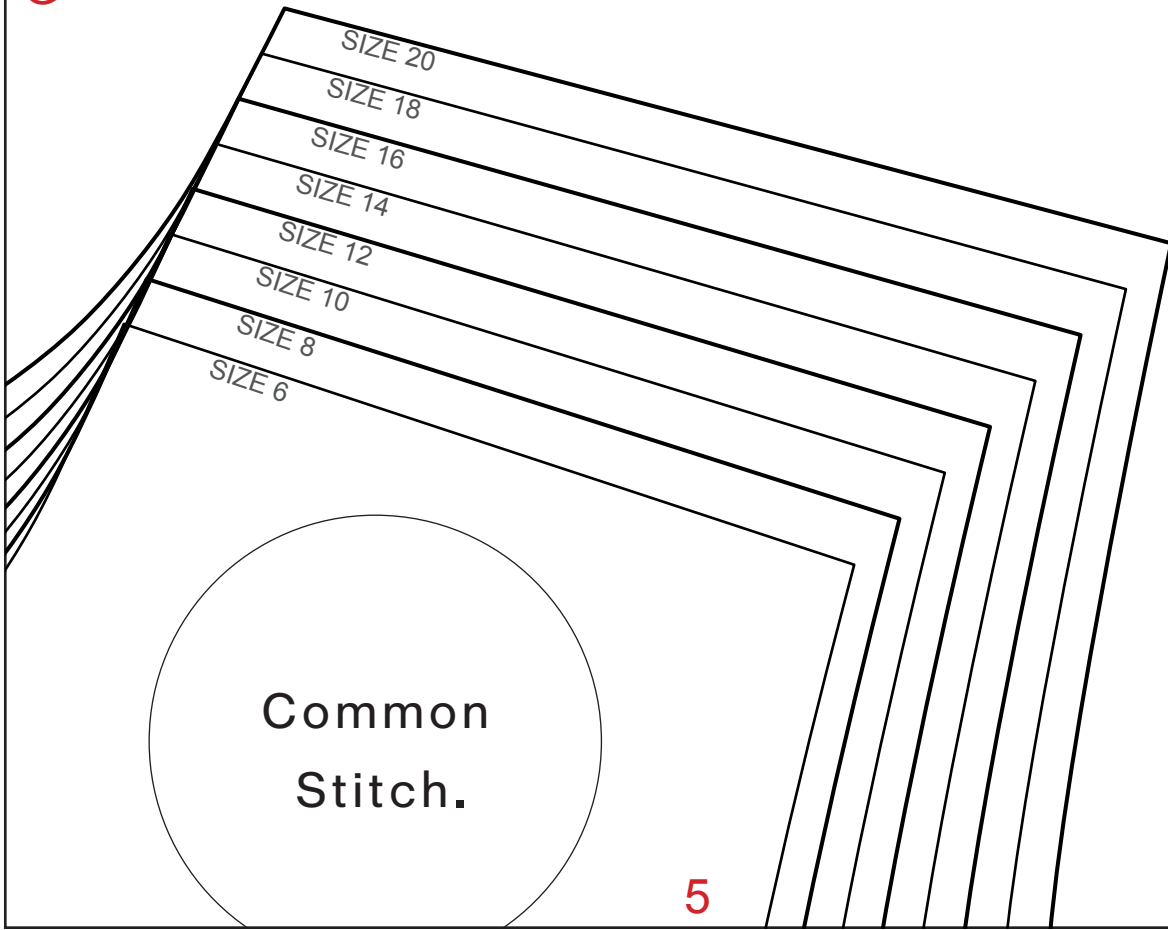
5

5



G

H



5

5

M

SIZE 6

SIZE 8

SIZE 10

SIZE 12

5

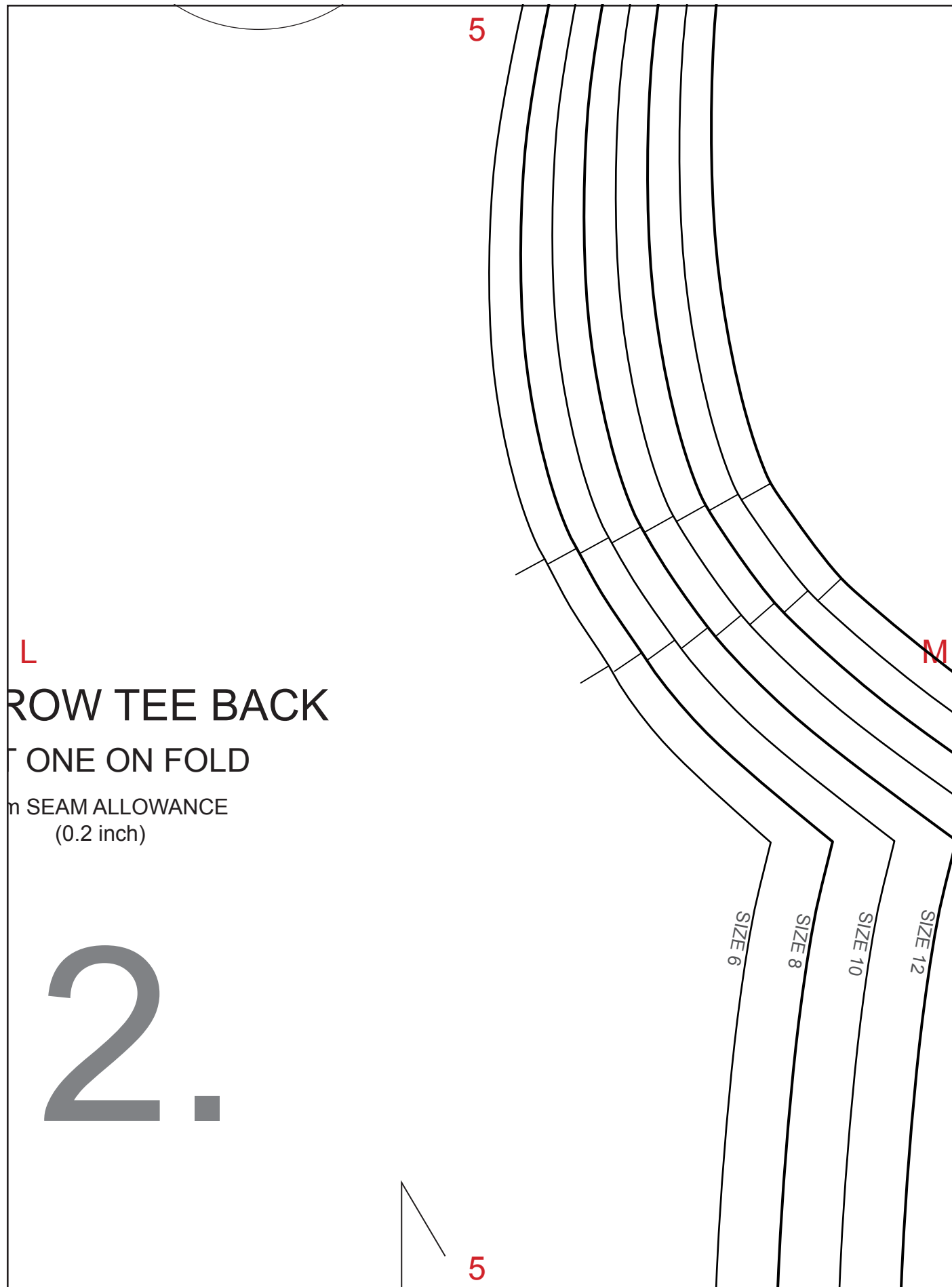
L

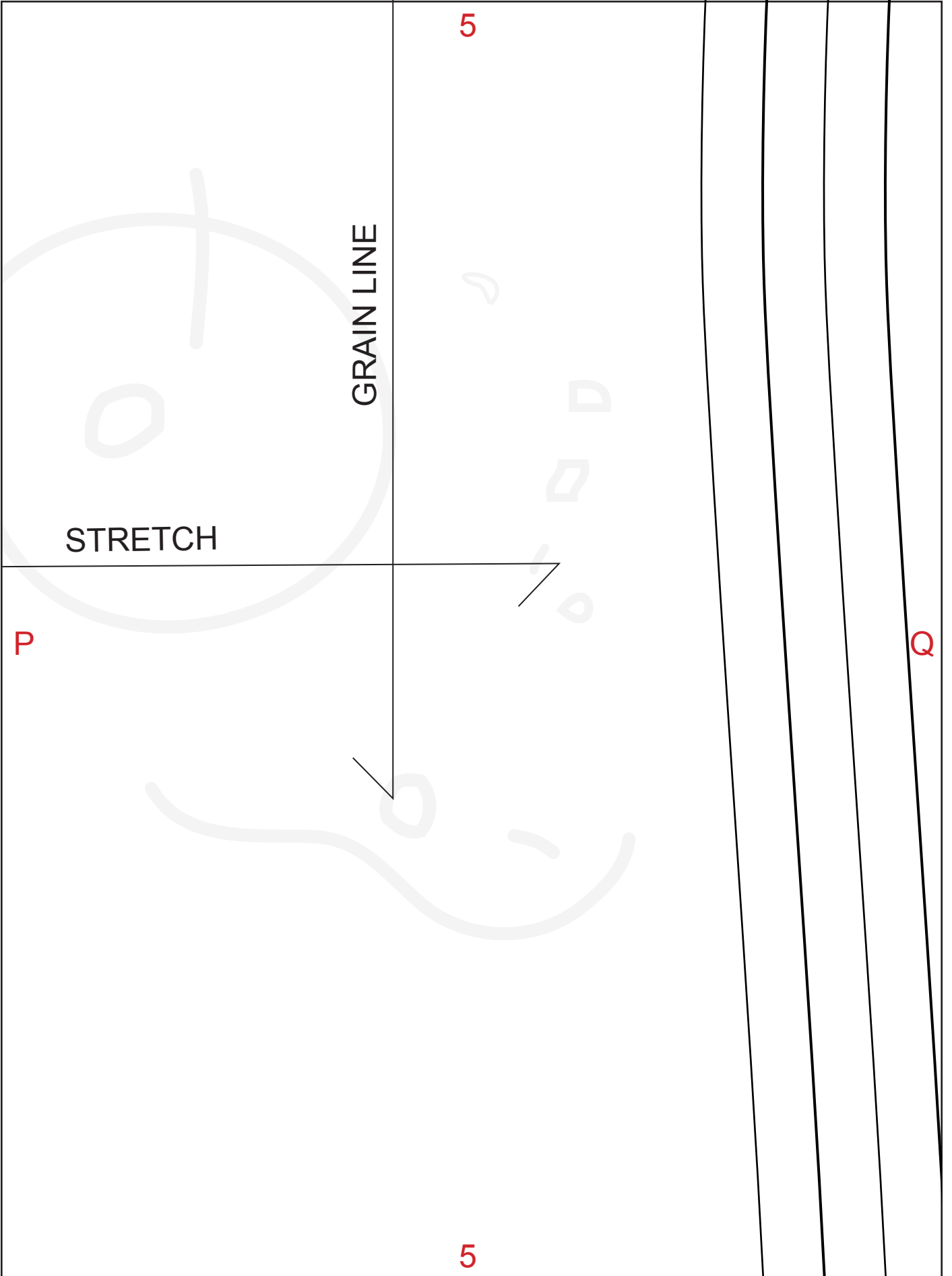
ROW TEE BACK

CUT ONE ON FOLD

1.5 cm SEAM ALLOWANCE
(0.2 inch)

2.





5

SIZE 6

SIZE 8

SIZE 10

T

U

© Common Stitch 2018. For personal use only, not f

5

Common
pitch.

D

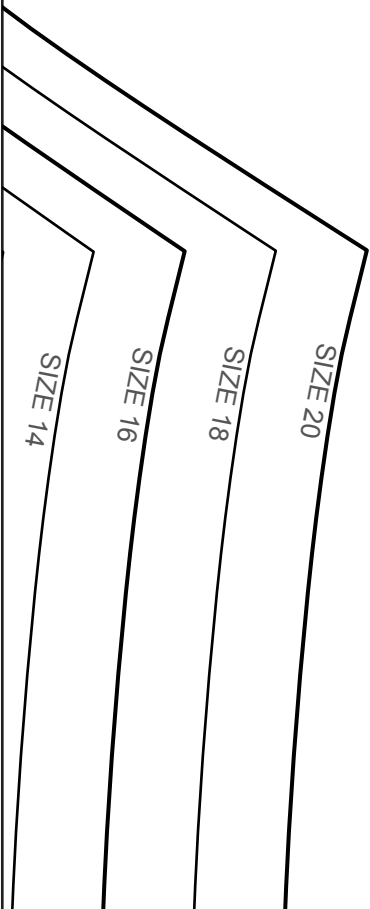
6

H

6

6

M



6

6

Q

6

SIZE 20
SIZE 18
SIZE 16
SIZE 14
SIZE 12

or reproduction or distribution.