

SPARROW MARKET TOTE - SMALL

3 PATTERN PIECES

1_TOTE FRONT / BACK	CUT ONE PAIR	44cm x 52cm (17.3 x 20.5 inches)
2_TOTE POCKET	CUT ONE	22cm x 32cm (8.6 x 12.6 inches)
3_TOTE STRAPS	CUT ONE PAIR ON FOLD	12cm x 71cm (4.8 x 28 inches) On Fold 12cm x 142cm (4.8 x 56 inches) Overall

REQUIRED NOTIONS

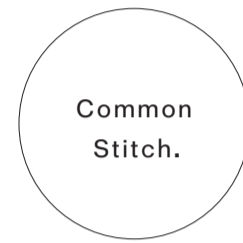
_THREAD

Thank you for choosing the sparrow market tote pattern!

If you are having any problems making the tote bag or have any questions please don't hesitate to contact us and we can help you out as best we can.

Enjoy!

ps. don't forget to post a picture and #commonstitch so we can follow along with your progress.



the sparrow market tote

The sparrow market tote is your perfect pal to take to the markets on a Sunday morning. Designed and built to last, this guy can hold your weeks worth of fruit, veggies + iconic bunch of flowers (includes that perfect insta-pic moment with every use).

sewing level

_beginner

suggested fabrics

_medium-weight fabrics; Linen, cotton, canvas, hemp + other natural fibres

equipment required

_sewing machine
_a good pair of sewing scissors
_pins or pattern weights
_markers chalk

notions

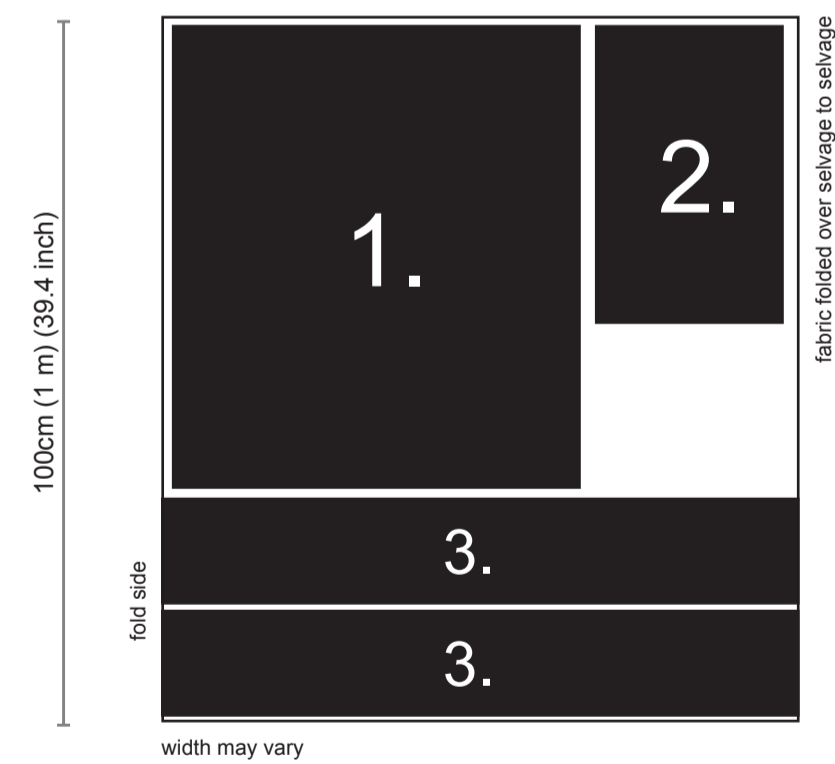
_thread

seam allowances

_all seams have a 1cm (0.4 inch) seam allowance

cutting instructions

note fabric is to be inside out.



before your start your project

Please read all instructions prior to starting work on your garment.

We recommend pre-washing all your fabrics and trims before sewing, to allow for any shrinkage.

Transfer all pattern markings to the wrong side of the fabric before removing the pattern pieces unless indicated otherwise.

Seam allowances for all garment pieces are 1cm (0.4 inch) unless indicated otherwise.

Neaten your seams + give your garments a longer life by either using an over-locker or a regular zigzag stitch on your seams.

We recommend pressing the seams as you go.

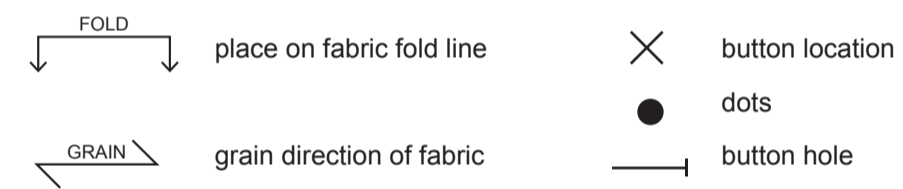
glossary of terms

_back-stitch
at the beginning and end of each line of continuous stitches sew four stitches forward and four stitches backwards to secure the stitch.

_edge-stitch
a finishing stitch sewn on the right side of the fabric very close to the edge as a decorative feature.

_top-stitch
a continuous row of stitches on the right side of a garment as a decorative feature.

pattern symbols



instructions

tips

_iron all seams once sewn to get a crisp finish.

_use pins to keep the pockets in place whilst sewing the side seams



instructions

step one

_cut out all your pattern pieces.

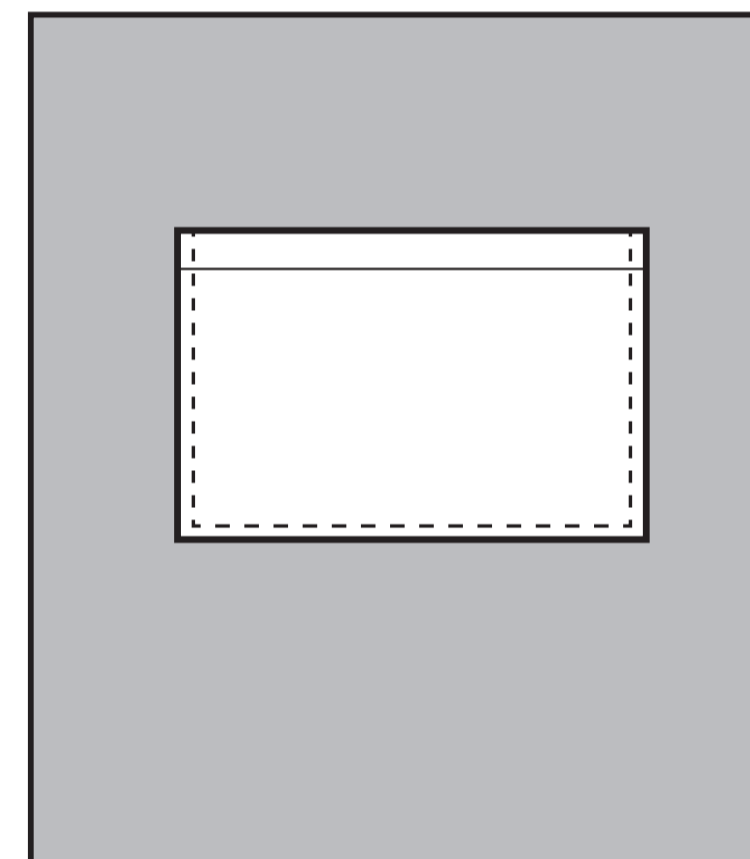
step two

_Overlock / zig zag all bag pieces. Double fold the top of the pocket piece over 1cm and top-stitch.



step three

_Attached the pocket piece onto the inside of the back bag piece. Attach by sewing the three remaining sides of the pocket, leaving the top open. We centered ours and attached it 15cm from the top of the bag so it was easy to reach.



step four

_With fabric right side to right side, sew the bag front + back pieces together, sewing around three sides. Leaving the top open.



instructions

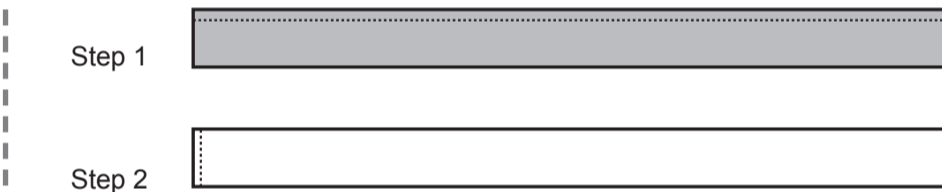
step five

_Double fold the top of the the bag pieces down 3cm and top-stitch around the top of the bag in a loop.



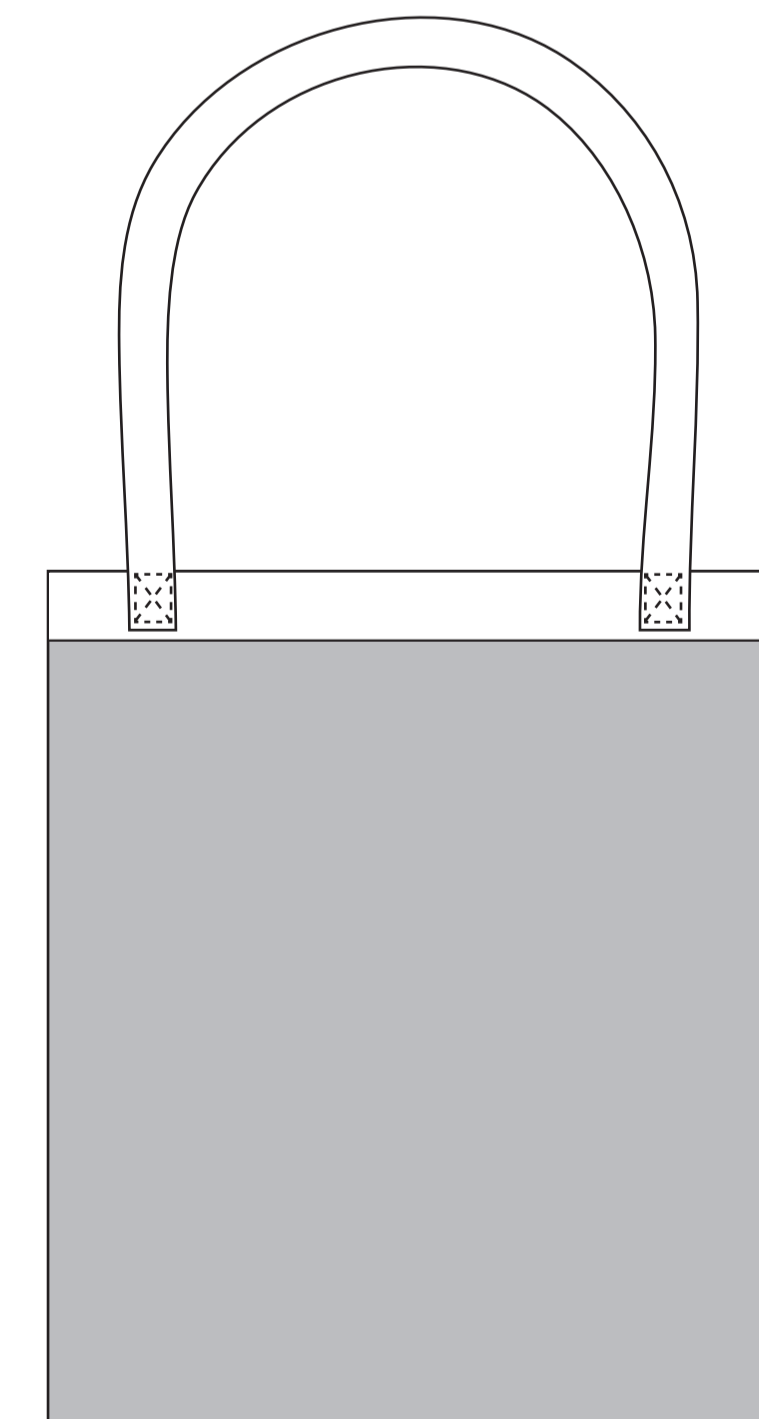
step six

_With the shoulder straps, fold each piece in half (length ways) and stitch along the whole length. Turn each piece inside out and give a good press. Make sure to turn in the ends and top-stitch for a neat finish.



step seven

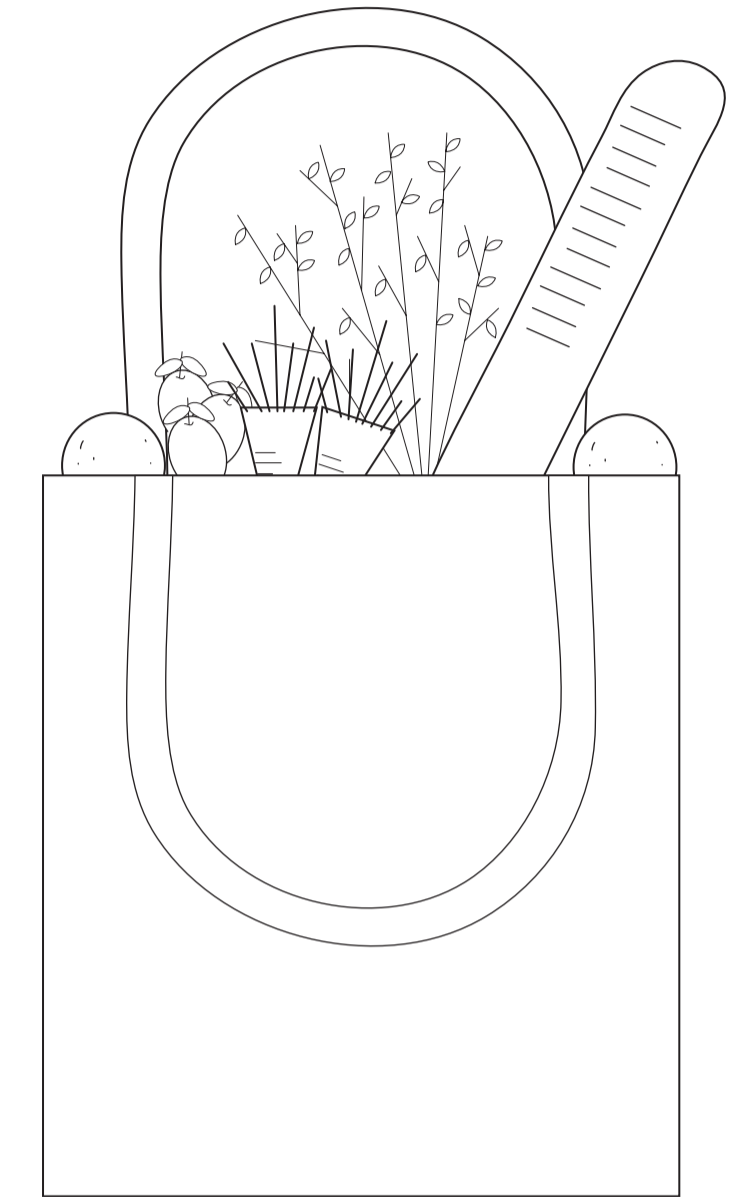
_Attach the strap ends to the bag body sides by sewing an cross stitch pattern to ensure it is attached securely. Attach each strap to the same body piece (back to back / front to front) as we did.



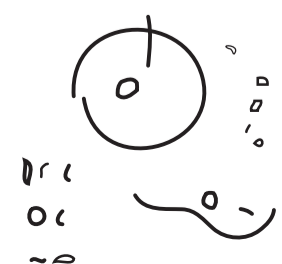
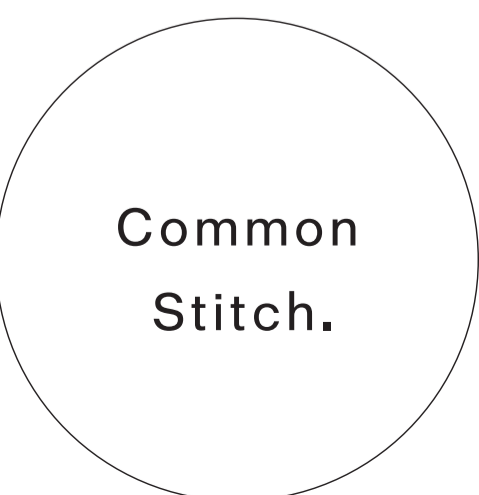
instructions

step eight

_Take your new bag out on a trip to your local farmers markets!



We would love to see how yours turned out! Make sure to #CommonStitch and #SparrowMarketTote on socials!



common stitch.
hand made in Australia

w: www.commonstitch.com.au
e: hello@commonstitch.com.au

common_stitch