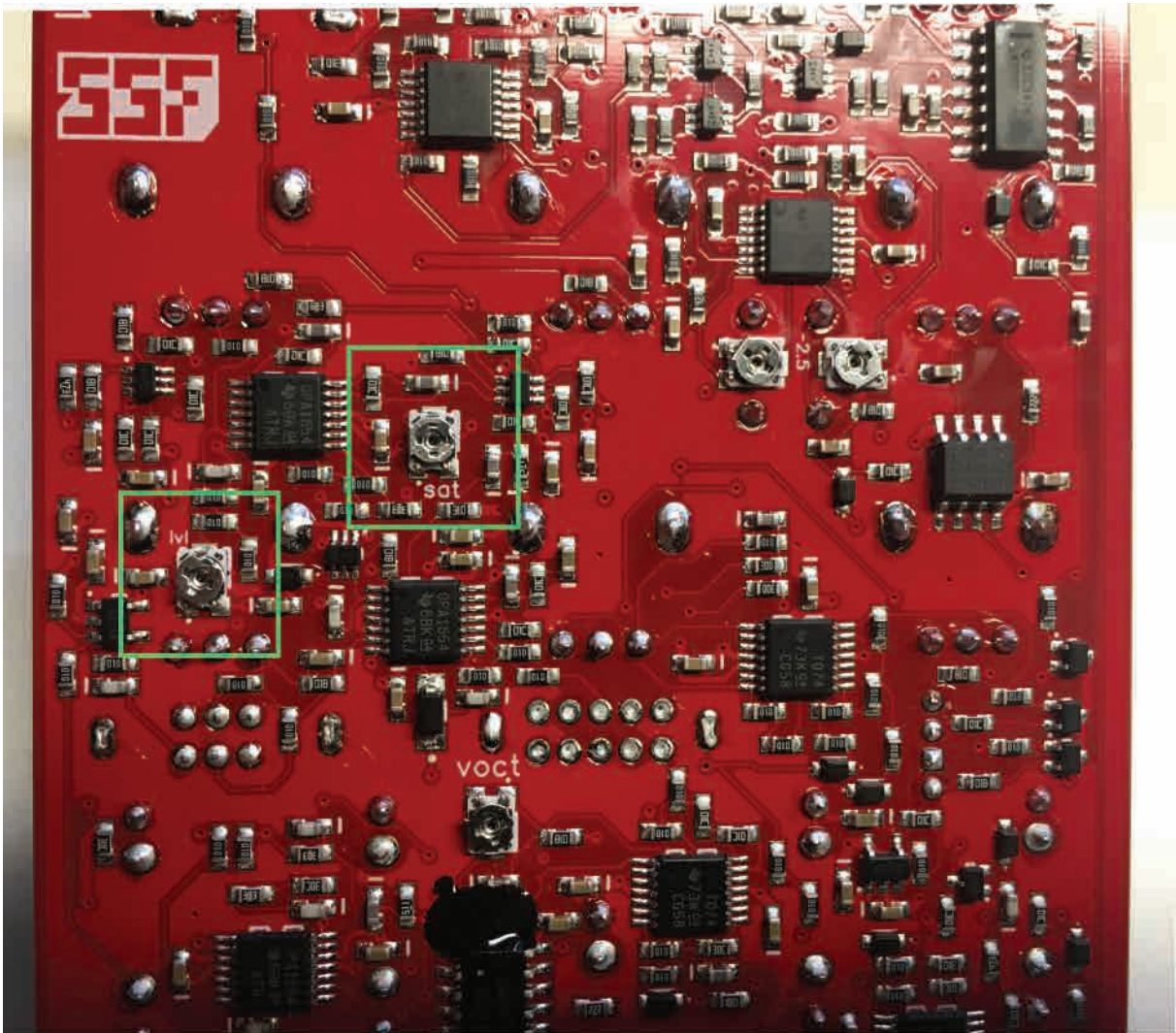
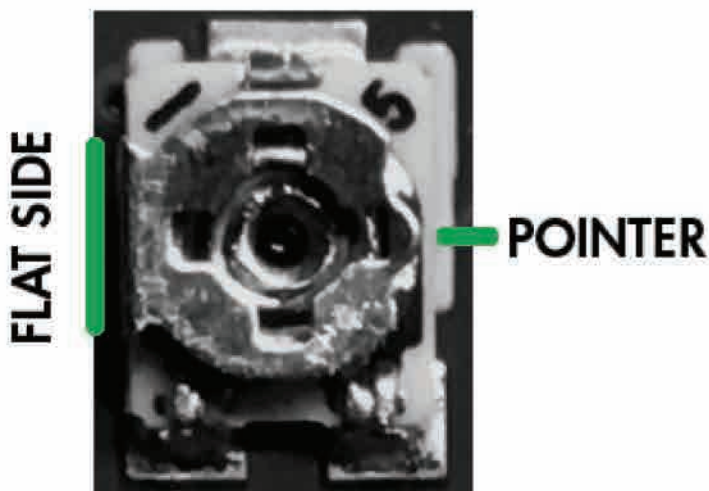


ENTITY BDS CALIBRATION FIX 12/27/17



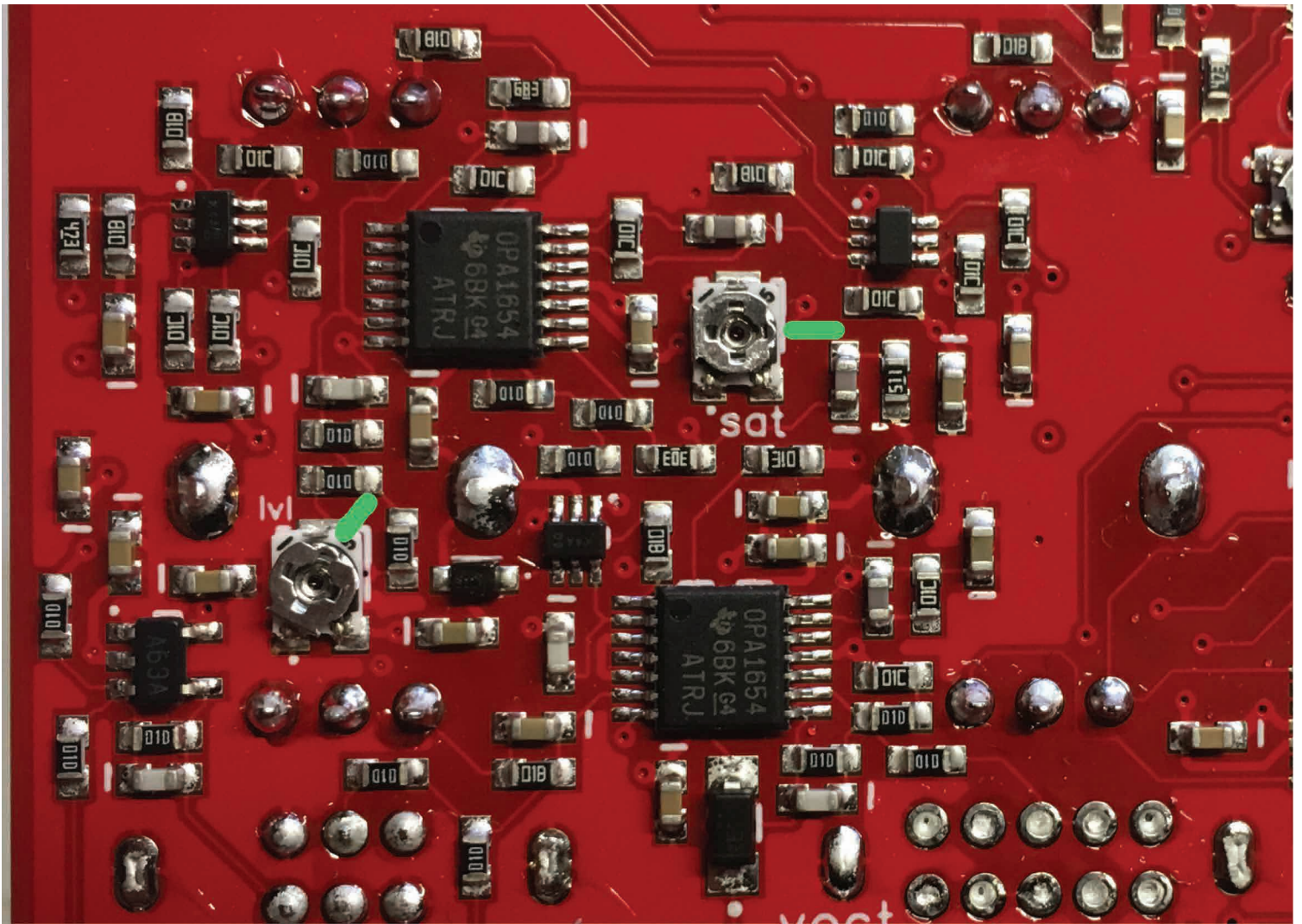
Locate the two trimmers labeled 'lv' and 'sat', shown above



Make note of the FLAT side and POINTER side of the trim pot.

Be careful to not overturn the trimmers.

They will stop at the min and max positions but they can be broken if too much force is applied.



Using the POINTER SIDE, adjust each trimmer to the positions shown by the GREEN lines in the image, above.