

Test Report

Report No. : MTi230907002-04C1

Date of Issue : December 22 2023

Client : SHENZHEN POWEROAK NEWENER CO., LTD

Product : Portable Power Station

Test Type : Commissioned Inspection

Shenzhen Microtest Co., Ltd.

<http://www.mtitest.com>





Instructions



1. The report shall not be partially reproduced without the written consent of the Laboratory;
2. The test results of this report are only responsible for the samples submitted;
3. This report is invalid without the seal and signature of the laboratory;
4. This report is invalid if transferred, altered or tampered with in any form without authorization;
5. Any objection to this report shall be submitted to the laboratory within 15 days from the date of receipt of the report.



Basic Information			
Client	SHENZHEN POWEROAK NEWENER CO., LTD		
Client Address	F19, BLD No.1, Kaidaer Tongsha Rd No.168, Xili Street, Nanshan Shenzhen China		
Manufacturer	SHENZHEN POWEROAK NEWENER CO., LTD		
Manufacturer Address	F19, BLD No.1, Kaidaer Tongsha Rd No.168, Xili Street, Nanshan Shenzhen China		
Sample Information			
Product	Portable Power Station	Model	AC2A
Serial Model	/	Brand/ Trademark	/
Sample Number	1	Sample Description	/
Testing Information			
Sample Receive Date	November 07, 2023	Sample Source	Customer provided
Test Specification	With reference to RoHS Directive 2011/65/EU and its amending (EU) 2015/863 (RoHS 2.0) .		
Date of Tests	November 07, 2023 - November 14, 2023		
Test Address	Chemistry lab		
Test Results:	Please refer to next page(s).		
Conclusion:	The submitted sample(s) complied with the Lead(Pb), Cadmium(Cd), Mercury(Hg), Hexavalent Chromium(Cr(VI)), PBBs, PBDEs, DBP, BBP, DEHP, DIBP content requirement according to RoHS Directive 2011/65/EU and its amending (EU) 2015/863 (RoHS 2.0).		
Compiled:	Reviewed:	Approved:	
<i>Tobey lin</i> December 22, 2023	<i>sunshing chen</i> December 22, 2023	<i>Wish Huang</i> December 22, 2023	



TEST REPORT



Report No.:MTi230907002-04C1

Page 2 of 49

Test Method:

1. With reference to IEC 62321-3-1:2013, screening by XRF spectroscopy.
2. Wet chemical test method.
 - a. With reference to IEC 62321-5:2013, determination of Cadmium by ICP-OES.
 - b. With reference to IEC 62321-5:2013, determination of Lead by ICP-OES.
 - c. With reference to IEC 62321-4:2017, determination of Mercury by ICP-OES.
 - d. With reference to IEC 62321-7-1:2015 & IEC 62321-7-2:2017, determination of Hexavalent chromium by Colorimetric method using UV-Vis.
 - e. With reference to IEC 62321-6:2015, determination of PBBs and PBDEs by GC-MS.
3. With reference to IEC 62321-8: 2017, determination of phthalates by GC-MS.



Testing Result:

Part No.	Sample Description	Test item	XRF Result	Chemical Test (mg/kg)	Conclusion
1	Silver metal screw	Pb	BL	--	Pass
		Cd	BL	--	
		Hg	BL	--	
		Cr(Cr(VI))	X	N.D.	
		Br(PBBs&PBDEs)	/	/	
		Phthalate(DBP/BBP/DEHP/DIBP)	/	/	
2	Silver metal screw	Pb	BL	--	Pass
		Cd	BL	--	
		Hg	BL	--	
		Cr(Cr(VI))	X	N.D.	
		Br(PBBs&PBDEs)	/	/	
		Phthalate(DBP/BBP/DEHP/DIBP)	/	/	
3	Golden metal	Pb*	OL	26304*	Exempt
		Cd	BL	--	
		Hg	BL	--	
		Cr(Cr(VI))	BL	--	
		Br(PBBs&PBDEs)	/	/	
		Phthalate(DBP/BBP/DEHP/DIBP)	/	/	
4	Silver metal screw	Pb	BL	--	Pass
		Cd	BL	--	
		Hg	BL	--	
		Cr(Cr(VI))	BL	--	
		Br(PBBs&PBDEs)	/	/	
		Phthalate(DBP/BBP/DEHP/DIBP)	/	/	

TEST REPORT

Report No.:MTi230907002-04C1

Page 4 of 49

Part No.	Sample Description	Test item	XRF Result	Chemical Test (mg/kg)	Conclusion
5	White plastic	Pb	BL	--	Pass
		Cd	BL	--	
		Hg	BL	--	
		Cr(Cr(VI))	BL	--	
		Br(PBBs&PBDEs)	BL	--	
		Phthalate(DBP/BBP /DEHP/DIBP)	--	N.D.	
6	Silver metal	Pb	BL	--	Pass
		Cd	BL	--	
		Hg	BL	--	
		Cr(Cr(VI))	BL	--	
		Br(PBBs&PBDEs)	/	/	
		Phthalate(DBP/BBP /DEHP/DIBP)	/	/	
7	Black plastic	Pb	BL	--	Pass
		Cd	BL	--	
		Hg	BL	--	
		Cr(Cr(VI))	BL	--	
		Br(PBBs&PBDEs)	BL	--	
		Phthalate(DBP/BBP /DEHP/DIBP)	--	N.D.	
8	White plastic	Pb	BL	--	Pass
		Cd	BL	--	
		Hg	BL	--	
		Cr(Cr(VI))	BL	--	
		Br(PBBs&PBDEs)	BL	--	
		Phthalate(DBP/BBP /DEHP/DIBP)	--	N.D.	
9	Silver metal	Pb	BL	--	Pass
		Cd	BL	--	
		Hg	BL	--	
		Cr(Cr(VI))	BL	--	
		Br(PBBs&PBDEs)	/	/	
		Phthalate(DBP/BBP /DEHP/DIBP)	/	/	

TEST REPORT

Report No.:MTi230907002-04C1

Page 5 of 49

Part No.	Sample Description	Test item	XRF Result	Chemical Test (mg/kg)	Conclusion
10	Silver metal line	Pb	BL	--	Pass
		Cd	BL	--	
		Hg	BL	--	
		Cr(Cr(VI))	BL	--	
		Br(PBBs&PBDEs)	/	/	
		Phthalate(DBP/BBP /DEHP/DIBP)	/	/	
11	Yellow line skin	Pb	BL	--	Pass
		Cd	BL	--	
		Hg	BL	--	
		Cr(Cr(VI))	BL	--	
		Br(PBBs&PBDEs)	BL	--	
		Phthalate(DBP/BBP /DEHP/DIBP)	--	N.D.	
12	Brown line skin	Pb	BL	--	Pass
		Cd	BL	--	
		Hg	BL	--	
		Cr(Cr(VI))	BL	--	
		Br(PBBs&PBDEs)	BL	--	
		Phthalate(DBP/BBP /DEHP/DIBP)	--	N.D.	
13	Blue line skin	Pb	BL	--	Pass
		Cd	BL	--	
		Hg	BL	--	
		Cr(Cr(VI))	BL	--	
		Br(PBBs&PBDEs)	BL	--	
		Phthalate(DBP/BBP /DEHP/DIBP)	--	N.D.	
14	Silver metal	Pb	BL	--	Pass
		Cd	BL	--	
		Hg	BL	--	
		Cr(Cr(VI))	BL	--	
		Br(PBBs&PBDEs)	/	/	
		Phthalate(DBP/BBP /DEHP/DIBP)	/	/	

TEST REPORT

Report No.:MTi230907002-04C1

Page 6 of 49

Part No.	Sample Description	Test item	XRF Result	Chemical Test (mg/kg)	Conclusion
15	Black plastic	Pb	BL	--	Pass
		Cd	BL	--	
		Hg	BL	--	
		Cr(Cr(VI))	BL	--	
		Br(PBBs&PBDEs)	X	N.D.	
		Phthalate(DBP/BBP /DEHP/DIBP)	--	N.D.	
16	Black plastic	Pb	BL	--	Pass
		Cd	BL	--	
		Hg	BL	--	
		Cr(Cr(VI))	BL	--	
		Br(PBBs&PBDEs)	BL	--	
		Phthalate(DBP/BBP /DEHP/DIBP)	--	N.D.	
17	Translucent plastic	Pb	BL	--	Pass
		Cd	BL	--	
		Hg	BL	--	
		Cr(Cr(VI))	BL	--	
		Br(PBBs&PBDEs)	BL	--	
		Phthalate(DBP/BBP /DEHP/DIBP)	--	N.D.	
18	Black plastic	Pb	BL	--	Pass
		Cd	BL	--	
		Hg	BL	--	
		Cr(Cr(VI))	BL	--	
		Br(PBBs&PBDEs)	BL	--	
		Phthalate(DBP/BBP /DEHP/DIBP)	--	N.D.	
19	Black plastic	Pb	BL	--	Pass
		Cd	BL	--	
		Hg	BL	--	
		Cr(Cr(VI))	BL	--	
		Br(PBBs&PBDEs)	BL	--	
		Phthalate(DBP/BBP /DEHP/DIBP)	--	N.D.	

TEST REPORT

Report No.:MTi230907002-04C1

Page 7 of 49

Part No.	Sample Description	Test item	XRF Result	Chemical Test (mg/kg)	Conclusion
20	Black plastic	Pb	BL	--	Pass
		Cd	BL	--	
		Hg	BL	--	
		Cr(Cr(VI))	BL	--	
		Br(PBBs&PBDEs)	BL	--	
		Phthalate(DBP/BBP /DEHP/DIBP)	--	N.D.	
21	Silver metal	Pb	BL	--	Pass
		Cd	BL	--	
		Hg	BL	--	
		Cr(Cr(VI))	BL	--	
		Br(PBBs&PBDEs)	/	/	
		Phthalate(DBP/BBP /DEHP/DIBP)	/	/	
22	Black plastic	Pb	BL	--	Pass
		Cd	BL	--	
		Hg	BL	--	
		Cr(Cr(VI))	BL	--	
		Br(PBBs&PBDEs)	BL	--	
		Phthalate(DBP/BBP /DEHP/DIBP)	--	N.D.	
23	Black plastic	Pb	BL	--	Pass
		Cd	BL	--	
		Hg	BL	--	
		Cr(Cr(VI))	BL	--	
		Br(PBBs&PBDEs)	BL	--	
		Phthalate(DBP/BBP /DEHP/DIBP)	--	N.D.	
24	Silver metal	Pb	BL	--	Pass
		Cd	BL	--	
		Hg	BL	--	
		Cr(Cr(VI))	BL	--	
		Br(PBBs&PBDEs)	/	/	
		Phthalate(DBP/BBP /DEHP/DIBP)	/	/	

TEST REPORT

Report No.:MTi230907002-04C1

Page 8 of 49

Part No.	Sample Description	Test item	XRF Result	Chemical Test (mg/kg)	Conclusion
25	White plastic	Pb	BL	--	Pass
		Cd	BL	--	
		Hg	BL	--	
		Cr(Cr(VI))	BL	--	
		Br(PBBs&PBDEs)	BL	--	
		Phthalate(DBP/BBP /DEHP/DIBP)	--	N.D.	
26	Translucent plastic	Pb	BL	--	Pass
		Cd	BL	--	
		Hg	BL	--	
		Cr(Cr(VI))	BL	--	
		Br(PBBs&PBDEs)	BL	--	
		Phthalate(DBP/BBP /DEHP/DIBP)	--	N.D.	
27	White plastic	Pb	BL	--	Pass
		Cd	BL	--	
		Hg	BL	--	
		Cr(Cr(VI))	BL	--	
		Br(PBBs&PBDEs)	BL	--	
		Phthalate(DBP/BBP /DEHP/DIBP)	--	N.D.	
28	Black glass	Pb	BL	--	Pass
		Cd	BL	--	
		Hg	BL	--	
		Cr(Cr(VI))	BL	--	
		Br(PBBs&PBDEs)	/	/	
		Phthalate(DBP/BBP /DEHP/DIBP)	/	/	
29	Yellow flat cable	Pb	BL	--	Pass
		Cd	BL	--	
		Hg	BL	--	
		Cr(Cr(VI))	BL	--	
		Br(PBBs&PBDEs)	BL	--	
		Phthalate(DBP/BBP /DEHP/DIBP)	--	N.D.	

TEST REPORT

Report No.:MTi230907002-04C1

Page 9 of 49

Part No.	Sample Description	Test item	XRF Result	Chemical Test (mg/kg)	Conclusion
30	Yellow plastic	Pb	BL	--	Pass
		Cd	BL	--	
		Hg	BL	--	
		Cr(Cr(VI))	BL	--	
		Br(PBBs&PBDEs)	BL	--	
		Phthalate(DBP/BBP /DEHP/DIBP)	--	N.D.	
31	Golden metal	Pb*	OL	13153*	Exempt
		Cd	BL	--	
		Hg	BL	--	
		Cr(Cr(VI))	BL	--	
		Br(PBBs&PBDEs)	/	/	
		Phthalate(DBP/BBP /DEHP/DIBP)	/	/	
32	White plastic	Pb	BL	--	Pass
		Cd	BL	--	
		Hg	BL	--	
		Cr(Cr(VI))	BL	--	
		Br(PBBs&PBDEs)	BL	--	
		Phthalate(DBP/BBP /DEHP/DIBP)	--	N.D.	
33	Silver metal	Pb	BL	--	Pass
		Cd	BL	--	
		Hg	BL	--	
		Cr(Cr(VI))	BL	--	
		Br(PBBs&PBDEs)	/	/	
		Phthalate(DBP/BBP /DEHP/DIBP)	/	/	
34	Silver metal	Pb	BL	--	Pass
		Cd	BL	--	
		Hg	BL	--	
		Cr(Cr(VI))	BL	--	
		Br(PBBs&PBDEs)	/	/	
		Phthalate(DBP/BBP /DEHP/DIBP)	/	/	

TEST REPORT

Report No.:MTi230907002-04C1

Page 10 of 49

Part No.	Sample Description	Test item	XRF Result	Chemical Test (mg/kg)	Conclusion
35	Black plastic	Pb	BL	--	Pass
		Cd	BL	--	
		Hg	BL	--	
		Cr(Cr(VI))	BL	--	
		Br(PBBs&PBDEs)	BL	--	
		Phthalate(DBP/BBP /DEHP/DIBP)	--	N.D.	
36	Black plastic	Pb	BL	--	Pass
		Cd	BL	--	
		Hg	BL	--	
		Cr(Cr(VI))	BL	--	
		Br(PBBs&PBDEs)	BL	--	
		Phthalate(DBP/BBP /DEHP/DIBP)	--	N.D.	
37	Silver metal	Pb	BL	--	Pass
		Cd	BL	--	
		Hg	BL	--	
		Cr(Cr(VI))	BL	--	
		Br(PBBs&PBDEs)	/	/	
		Phthalate(DBP/BBP /DEHP/DIBP)	/	/	
38	Black plastic	Pb	BL	--	Pass
		Cd	BL	--	
		Hg	BL	--	
		Cr(Cr(VI))	BL	--	
		Br(PBBs&PBDEs)	BL	--	
		Phthalate(DBP/BBP /DEHP/DIBP)	--	N.D.	
39	Silver metal	Pb	BL	--	Pass
		Cd	BL	--	
		Hg	BL	--	
		Cr(Cr(VI))	X	N.D.	
		Br(PBBs&PBDEs)	/	/	
		Phthalate(DBP/BBP /DEHP/DIBP)	/	/	

TEST REPORT

Report No.:MTi230907002-04C1

Page 11 of 49

Part No.	Sample Description	Test item	XRF Result	Chemical Test (mg/kg)	Conclusion
40	Silver metal	Pb	BL	--	Pass
		Cd	BL	--	
		Hg	BL	--	
		Cr(Cr(VI))	BL	--	
		Br(PBBs&PBDEs)	/	/	
		Phthalate(DBP/BBP /DEHP/DIBP)	/	/	
41	Black plastic	Pb	BL	--	Pass
		Cd	BL	--	
		Hg	BL	--	
		Cr(Cr(VI))	BL	--	
		Br(PBBs&PBDEs)	BL	--	
		Phthalate(DBP/BBP /DEHP/DIBP)	--	N.D.	
42	Silver metal	Pb	BL	--	Pass
		Cd	BL	--	
		Hg	BL	--	
		Cr(Cr(VI))	BL	--	
		Br(PBBs&PBDEs)	/	/	
		Phthalate(DBP/BBP /DEHP/DIBP)	/	/	
43	Black magnet	Pb	BL	--	Pass
		Cd	BL	--	
		Hg	BL	--	
		Cr(Cr(VI))	BL	--	
		Br(PBBs&PBDEs)	/	/	
		Phthalate(DBP/BBP /DEHP/DIBP)	/	/	
44	Silver metal	Pb	BL	--	Pass
		Cd	BL	--	
		Hg	BL	--	
		Cr(Cr(VI))	BL	--	
		Br(PBBs&PBDEs)	/	/	
		Phthalate(DBP/BBP /DEHP/DIBP)	/	/	

TEST REPORT

Report No.:MTi230907002-04C1

Page 12 of 49

Part No.	Sample Description	Test item	XRF Result	Chemical Test (mg/kg)	Conclusion
45	Copper metal	Pb	BL	--	Pass
		Cd	BL	--	
		Hg	BL	--	
		Cr(Cr(VI))	BL	--	
		Br(PBBs&PBDEs)	/	/	
		Phthalate(DBP/BBP /DEHP/DIBP)	/	/	
46	Black glue	Pb	BL	--	Pass
		Cd	BL	--	
		Hg	BL	--	
		Cr(Cr(VI))	BL	--	
		Br(PBBs&PBDEs)	BL	--	
		Phthalate(DBP/BBP /DEHP/DIBP)	--	N.D.	
47	Black metal screw	Pb	BL	--	Pass
		Cd	BL	--	
		Hg	BL	--	
		Cr(Cr(VI))	BL	--	
		Br(PBBs&PBDEs)	/	/	
		Phthalate(DBP/BBP /DEHP/DIBP)	/	/	
48	Silver metal screw	Pb	BL	--	Pass
		Cd	BL	--	
		Hg	BL	--	
		Cr(Cr(VI))	X	N.D.	
		Br(PBBs&PBDEs)	/	/	
		Phthalate(DBP/BBP /DEHP/DIBP)	/	/	
49	Silver metal	Pb	BL	--	Pass
		Cd	BL	--	
		Hg	BL	--	
		Cr(Cr(VI))	BL	--	
		Br(PBBs&PBDEs)	/	/	
		Phthalate(DBP/BBP /DEHP/DIBP)	/	/	

TEST REPORT

Report No.:MTi230907002-04C1

Page 13 of 49

Part No.	Sample Description	Test item	XRF Result	Chemical Test (mg/kg)	Conclusion
50	Copper metal	Pb	BL	--	Pass
		Cd	BL	--	
		Hg	BL	--	
		Cr(Cr(VI))	BL	--	
		Br(PBBs&PBDEs)	/	/	
		Phthalate(DBP/BBP /DEHP/DIBP)	/	/	
51	Silver metal	Pb	BL	--	Pass
		Cd	BL	--	
		Hg	BL	--	
		Cr(Cr(VI))	X	N.D.	
		Br(PBBs&PBDEs)	/	/	
		Phthalate(DBP/BBP /DEHP/DIBP)	/	/	
52	Black plastic	Pb	BL	--	Pass
		Cd	BL	--	
		Hg	BL	--	
		Cr(Cr(VI))	BL	--	
		Br(PBBs&PBDEs)	BL	--	
		Phthalate(DBP/BBP /DEHP/DIBP)	--	N.D.	
53	Black label	Pb	BL	--	Pass
		Cd	BL	--	
		Hg	BL	--	
		Cr(Cr(VI))	BL	--	
		Br(PBBs&PBDEs)	BL	--	
		Phthalate(DBP/BBP /DEHP/DIBP)	--	N.D.	
54	Silver-white metal	Pb	BL	--	Pass
		Cd	BL	--	
		Hg	BL	--	
		Cr(Cr(VI))	BL	--	
		Br(PBBs&PBDEs)	/	/	
		Phthalate(DBP/BBP /DEHP/DIBP)	/	/	

TEST REPORT

Report No.:MTi230907002-04C1

Page 14 of 49

Part No.	Sample Description	Test item	XRF Result	Chemical Test (mg/kg)	Conclusion
55	Black plastic	Pb	BL	--	Pass
		Cd	BL	--	
		Hg	BL	--	
		Cr(Cr(VI))	BL	--	
		Br(PBBs&PBDEs)	BL	--	
		Phthalate(DBP/BBP /DEHP/DIBP)	--	N.D.	
56	Black magnet	Pb	BL	--	Pass
		Cd	BL	--	
		Hg	BL	--	
		Cr(Cr(VI))	BL	--	
		Br(PBBs&PBDEs)	/	/	
		Phthalate(DBP/BBP /DEHP/DIBP)	/	/	
57	Yellow plastic	Pb	BL	--	Pass
		Cd	BL	--	
		Hg	BL	--	
		Cr(Cr(VI))	BL	--	
		Br(PBBs&PBDEs)	BL	--	
		Phthalate(DBP/BBP /DEHP/DIBP)	--	N.D.	
58	Copper metal	Pb	BL	--	Pass
		Cd	BL	--	
		Hg	BL	--	
		Cr(Cr(VI))	BL	--	
		Br(PBBs&PBDEs)	/	/	
		Phthalate(DBP/BBP /DEHP/DIBP)	/	/	
59	Black plastic	Pb	BL	--	Pass
		Cd	BL	--	
		Hg	BL	--	
		Cr(Cr(VI))	BL	--	
		Br(PBBs&PBDEs)	BL	--	
		Phthalate(DBP/BBP /DEHP/DIBP)	--	N.D.	

TEST REPORT

Report No.:MTi230907002-04C1

Page 15 of 49

Part No.	Sample Description	Test item	XRF Result	Chemical Test (mg/kg)	Conclusion
60	Silver metal	Pb	BL	--	Pass
		Cd	BL	--	
		Hg	BL	--	
		Cr(Cr(VI))	BL	--	
		Br(PBBs&PBDEs)	/	/	
		Phthalate(DBP/BBP /DEHP/DIBP)	/	/	
61	Yellow plastic	Pb	BL	--	Pass
		Cd	BL	--	
		Hg	BL	--	
		Cr(Cr(VI))	BL	--	
		Br(PBBs&PBDEs)	BL	--	
		Phthalate(DBP/BBP /DEHP/DIBP)	--	N.D.	
62	Black plastic	Pb	BL	--	Pass
		Cd	BL	--	
		Hg	BL	--	
		Cr(Cr(VI))	BL	--	
		Br(PBBs&PBDEs)	BL	--	
		Phthalate(DBP/BBP /DEHP/DIBP)	--	N.D.	
63	White plastic	Pb	BL	--	Pass
		Cd	BL	--	
		Hg	BL	--	
		Cr(Cr(VI))	BL	--	
		Br(PBBs&PBDEs)	BL	--	
		Phthalate(DBP/BBP /DEHP/DIBP)	--	N.D.	
64	Silver metal	Pb	BL	--	Pass
		Cd	BL	--	
		Hg	BL	--	
		Cr(Cr(VI))	BL	--	
		Br(PBBs&PBDEs)	/	/	
		Phthalate(DBP/BBP /DEHP/DIBP)	/	/	

TEST REPORT

Report No.:MTi230907002-04C1

Page 16 of 49

Part No.	Sample Description	Test item	XRF Result	Chemical Test (mg/kg)	Conclusion
65	White glue	Pb	BL	--	Pass
		Cd	BL	--	
		Hg	BL	--	
		Cr(Cr(VI))	BL	--	
		Br(PBBs&PBDEs)	BL	--	
		Phthalate(DBP/BBP /DEHP/DIBP)	--	N.D.	
66	Black plastic	Pb	BL	--	Pass
		Cd	BL	--	
		Hg	BL	--	
		Cr(Cr(VI))	BL	--	
		Br(PBBs&PBDEs)	BL	--	
		Phthalate(DBP/BBP /DEHP/DIBP)	--	N.D.	
67	Red line skin	Pb	BL	--	Pass
		Cd	BL	--	
		Hg	BL	--	
		Cr(Cr(VI))	BL	--	
		Br(PBBs&PBDEs)	BL	--	
		Phthalate(DBP/BBP /DEHP/DIBP)	--	N.D.	
68	Silver metal line	Pb	BL	--	Pass
		Cd	BL	--	
		Hg	BL	--	
		Cr(Cr(VI))	BL	--	
		Br(PBBs&PBDEs)	/	/	
		Phthalate(DBP/BBP /DEHP/DIBP)	/	/	
69	Yellow line skin	Pb	BL	--	Pass
		Cd	BL	--	
		Hg	BL	--	
		Cr(Cr(VI))	BL	--	
		Br(PBBs&PBDEs)	BL	--	
		Phthalate(DBP/BBP /DEHP/DIBP)	--	N.D.	

TEST REPORT

Report No.:MTi230907002-04C1

Page 17 of 49

Part No.	Sample Description	Test item	XRF Result	Chemical Test (mg/kg)	Conclusion
70	Black plastic	Pb	BL	--	Pass
		Cd	BL	--	
		Hg	BL	--	
		Cr(Cr(VI))	BL	--	
		Br(PBBs&PBDEs)	BL	--	
		Phthalate(DBP/BBP /DEHP/DIBP)	--	N.D.	
71	Wire sheath	Pb	BL	--	Pass
		Cd	BL	--	
		Hg	BL	--	
		Cr(Cr(VI))	BL	--	
		Br(PBBs&PBDEs)	BL	--	
		Phthalate(DBP/BBP /DEHP/DIBP)	--	N.D.	
72	Golden metal	Pb	BL	--	Pass
		Cd	BL	--	
		Hg	BL	--	
		Cr(Cr(VI))	BL	--	
		Br(PBBs&PBDEs)	/	/	
		Phthalate(DBP/BBP /DEHP/DIBP)	/	/	
73	White plastic	Pb	BL	--	Pass
		Cd	BL	--	
		Hg	BL	--	
		Cr(Cr(VI))	BL	--	
		Br(PBBs&PBDEs)	X	N.D.	
		Phthalate(DBP/BBP /DEHP/DIBP)	--	N.D.	
74	Silver metal	Pb	BL	--	Pass
		Cd	BL	--	
		Hg	BL	--	
		Cr(Cr(VI))	BL	--	
		Br(PBBs&PBDEs)	/	/	
		Phthalate(DBP/BBP /DEHP/DIBP)	/	/	

TEST REPORT

Report No.:MTi230907002-04C1

Page 18 of 49

Part No.	Sample Description	Test item	XRF Result	Chemical Test (mg/kg)	Conclusion
75	Yellow plastic	Pb	BL	--	Pass
		Cd	BL	--	
		Hg	BL	--	
		Cr(Cr(VI))	BL	--	
		Br(PBBs&PBDEs)	BL	--	
		Phthalate(DBP/BBP /DEHP/DIBP)	--	N.D.	
76	Golden metal	Pb*	OL	24589*	Exempt
		Cd	BL	--	
		Hg	BL	--	
		Cr(Cr(VI))	BL	--	
		Br(PBBs&PBDEs)	/	/	
		Phthalate(DBP/BBP /DEHP/DIBP)	/	/	
77	Silver metal	Pb	BL	--	Pass
		Cd	BL	--	
		Hg	BL	--	
		Cr(Cr(VI))	BL	--	
		Br(PBBs&PBDEs)	/	/	
		Phthalate(DBP/BBP /DEHP/DIBP)	/	/	
78	Red plastic	Pb	BL	--	Pass
		Cd	BL	--	
		Hg	BL	--	
		Cr(Cr(VI))	BL	--	
		Br(PBBs&PBDEs)	BL	--	
		Phthalate(DBP/BBP /DEHP/DIBP)	--	N.D.	
79	Red plastic	Pb	BL	--	Pass
		Cd	BL	--	
		Hg	BL	--	
		Cr(Cr(VI))	BL	--	
		Br(PBBs&PBDEs)	BL	--	
		Phthalate(DBP/BBP /DEHP/DIBP)	--	N.D.	

TEST REPORT

Report No.:MTi230907002-04C1

Page 19 of 49

Part No.	Sample Description	Test item	XRF Result	Chemical Test (mg/kg)	Conclusion
80	White label	Pb	BL	--	Pass
		Cd	BL	--	
		Hg	BL	--	
		Cr(Cr(VI))	BL	--	
		Br(PBBs&PBDEs)	BL	--	
		Phthalate(DBP/BBP /DEHP/DIBP)	--	N.D.	
81	Black plastic	Pb	BL	--	Pass
		Cd	BL	--	
		Hg	BL	--	
		Cr(Cr(VI))	BL	--	
		Br(PBBs&PBDEs)	BL	--	
		Phthalate(DBP/BBP /DEHP/DIBP)	--	N.D.	
82	Silver metal	Pb	BL	--	Pass
		Cd	BL	--	
		Hg	BL	--	
		Cr(Cr(VI))	BL	--	
		Br(PBBs&PBDEs)	/	/	
		Phthalate(DBP/BBP /DEHP/DIBP)	/	/	
83	Black line skin	Pb	BL	--	Pass
		Cd	BL	--	
		Hg	BL	--	
		Cr(Cr(VI))	BL	--	
		Br(PBBs&PBDEs)	BL	--	
		Phthalate(DBP/BBP /DEHP/DIBP)	--	N.D.	
84	Blue line skin	Pb	BL	--	Pass
		Cd	BL	--	
		Hg	BL	--	
		Cr(Cr(VI))	BL	--	
		Br(PBBs&PBDEs)	BL	--	
		Phthalate(DBP/BBP /DEHP/DIBP)	--	N.D.	

TEST REPORT

Report No.:MTi230907002-04C1

Page 20 of 49

Part No.	Sample Description	Test item	XRF Result	Chemical Test (mg/kg)	Conclusion
85	Green line skin	Pb	BL	--	Pass
		Cd	BL	--	
		Hg	BL	--	
		Cr(Cr(VI))	BL	--	
		Br(PBBs&PBDEs)	BL	--	
		Phthalate(DBP/BBP /DEHP/DIBP)	--	N.D.	
86	Brown line skin	Pb	BL	--	Pass
		Cd	BL	--	
		Hg	BL	--	
		Cr(Cr(VI))	BL	--	
		Br(PBBs&PBDEs)	BL	--	
		Phthalate(DBP/BBP /DEHP/DIBP)	--	N.D.	
87	Copper metal line	Pb	BL	--	Pass
		Cd	BL	--	
		Hg	BL	--	
		Cr(Cr(VI))	BL	--	
		Br(PBBs&PBDEs)	/	/	
		Phthalate(DBP/BBP /DEHP/DIBP)	/	/	
88	Black plastic	Pb	BL	--	Pass
		Cd	BL	--	
		Hg	BL	--	
		Cr(Cr(VI))	BL	--	
		Br(PBBs&PBDEs)	BL	--	
		Phthalate(DBP/BBP /DEHP/DIBP)	--	N.D.	
89	Black plastic	Pb	BL	--	Pass
		Cd	BL	--	
		Hg	BL	--	
		Cr(Cr(VI))	BL	--	
		Br(PBBs&PBDEs)	BL	--	
		Phthalate(DBP/BBP /DEHP/DIBP)	--	N.D.	

TEST REPORT

Report No.:MTi230907002-04C1

Page 21 of 49

Part No.	Sample Description	Test item	XRF Result	Chemical Test (mg/kg)	Conclusion
90	Black plastic	Pb	BL	--	Pass
		Cd	BL	--	
		Hg	BL	--	
		Cr(Cr(VI))	BL	--	
		Br(PBBs&PBDEs)	BL	--	
		Phthalate(DBP/BBP /DEHP/DIBP)	--	N.D.	
91	Black plastic	Pb	BL	--	Pass
		Cd	BL	--	
		Hg	BL	--	
		Cr(Cr(VI))	BL	--	
		Br(PBBs&PBDEs)	BL	--	
		Phthalate(DBP/BBP /DEHP/DIBP)	--	N.D.	
92	Black plastic	Pb	BL	--	Pass
		Cd	BL	--	
		Hg	BL	--	
		Cr(Cr(VI))	BL	--	
		Br(PBBs&PBDEs)	BL	--	
		Phthalate(DBP/BBP /DEHP/DIBP)	--	N.D.	
93	Black line skin	Pb	BL	--	Pass
		Cd	BL	--	
		Hg	BL	--	
		Cr(Cr(VI))	BL	--	
		Br(PBBs&PBDEs)	BL	--	
		Phthalate(DBP/BBP /DEHP/DIBP)	--	N.D.	
94	Black line skin	Pb	BL	--	Pass
		Cd	BL	--	
		Hg	BL	--	
		Cr(Cr(VI))	BL	--	
		Br(PBBs&PBDEs)	BL	--	
		Phthalate(DBP/BBP /DEHP/DIBP)	--	N.D.	

TEST REPORT

Report No.:MTi230907002-04C1

Page 22 of 49

Part No.	Sample Description	Test item	XRF Result	Chemical Test (mg/kg)	Conclusion
95	Red line skin	Pb	BL	--	Pass
		Cd	BL	--	
		Hg	BL	--	
		Cr(Cr(VI))	BL	--	
		Br(PBBs&PBDEs)	BL	--	
		Phthalate(DBP/BBP /DEHP/DIBP)	--	N.D.	
96	Black plastic	Pb	BL	--	Pass
		Cd	BL	--	
		Hg	BL	--	
		Cr(Cr(VI))	BL	--	
		Br(PBBs&PBDEs)	BL	--	
		Phthalate(DBP/BBP /DEHP/DIBP)	--	N.D.	
97	Black label	Pb	BL	--	Pass
		Cd	BL	--	
		Hg	BL	--	
		Cr(Cr(VI))	BL	--	
		Br(PBBs&PBDEs)	BL	--	
		Phthalate(DBP/BBP /DEHP/DIBP)	--	N.D.	
98	Black plastic	Pb	BL	--	Pass
		Cd	BL	--	
		Hg	BL	--	
		Cr(Cr(VI))	BL	--	
		Br(PBBs&PBDEs)	BL	--	
		Phthalate(DBP/BBP /DEHP/DIBP)	--	N.D.	
99	Black plastic	Pb	BL	--	Pass
		Cd	BL	--	
		Hg	BL	--	
		Cr(Cr(VI))	BL	--	
		Br(PBBs&PBDEs)	BL	--	
		Phthalate(DBP/BBP /DEHP/DIBP)	--	N.D.	

TEST REPORT

Report No.:MTi230907002-04C1

Page 23 of 49

Part No.	Sample Description	Test item	XRF Result	Chemical Test (mg/kg)	Conclusion
100	Solder	Pb	BL	--	Pass
		Cd	BL	--	
		Hg	BL	--	
		Cr(Cr(VI))	BL	--	
		Br(PBBs&PBDEs)	/	/	
		Phthalate(DBP/BBP /DEHP/DIBP)	/	/	
101	Green PCB	Pb	BL	--	Pass
		Cd	BL	--	
		Hg	BL	--	
		Cr(Cr(VI))	BL	--	
		Br(PBBs&PBDEs)	BL	--	
		Phthalate(DBP/BBP /DEHP/DIBP)	--	N.D.	
102	Green PCB	Pb	BL	--	Pass
		Cd	BL	--	
		Hg	BL	--	
		Cr(Cr(VI))	BL	--	
		Br(PBBs&PBDEs)	BL	--	
		Phthalate(DBP/BBP /DEHP/DIBP)	--	N.D.	
103	Audion	Pb	BL	--	Pass
		Cd	BL	--	
		Hg	BL	--	
		Cr(Cr(VI))	BL	--	
		Br(PBBs&PBDEs)	BL	--	
		Phthalate(DBP/BBP /DEHP/DIBP)	--	N.D.	
104	Black IC	Pb	BL	--	Pass
		Cd	BL	--	
		Hg	BL	--	
		Cr(Cr(VI))	BL	--	
		Br(PBBs&PBDEs)	BL	--	
		Phthalate(DBP/BBP /DEHP/DIBP)	--	N.D.	

TEST REPORT

Report No.:MTi230907002-04C1

Page 24 of 49

Part No.	Sample Description	Test item	XRF Result	Chemical Test (mg/kg)	Conclusion
105	Black IC	Pb	BL	--	Pass
		Cd	BL	--	
		Hg	BL	--	
		Cr(Cr(VI))	BL	--	
		Br(PBBs&PBDEs)	BL	--	
		Phthalate(DBP/BBP /DEHP/DIBP)	--	N.D.	
106	Black IC	Pb	BL	--	Pass
		Cd	BL	--	
		Hg	BL	--	
		Cr(Cr(VI))	BL	--	
		Br(PBBs&PBDEs)	BL	--	
		Phthalate(DBP/BBP /DEHP/DIBP)	--	N.D.	
107	Black IC	Pb	BL	--	Pass
		Cd	BL	--	
		Hg	BL	--	
		Cr(Cr(VI))	BL	--	
		Br(PBBs&PBDEs)	BL	--	
		Phthalate(DBP/BBP /DEHP/DIBP)	--	N.D.	
108	White capacitor	Pb	BL	--	Pass
		Cd	BL	--	
		Hg	BL	--	
		Cr(Cr(VI))	BL	--	
		Br(PBBs&PBDEs)	BL	--	
		Phthalate(DBP/BBP /DEHP/DIBP)	--	N.D.	
109	Black IC	Pb	BL	--	Pass
		Cd	BL	--	
		Hg	BL	--	
		Cr(Cr(VI))	BL	--	
		Br(PBBs&PBDEs)	BL	--	
		Phthalate(DBP/BBP /DEHP/DIBP)	--	N.D.	

TEST REPORT

Report No.:MTi230907002-04C1

Page 25 of 49

Part No.	Sample Description	Test item	XRF Result	Chemical Test (mg/kg)	Conclusion
110	Inductor	Pb	BL	--	Pass
		Cd	BL	--	
		Hg	BL	--	
		Cr(Cr(VI))	BL	--	
		Br(PBBs&PBDEs)	BL	--	
		Phthalate(DBP/BBP /DEHP/DIBP)	--	N.D.	
111	Black IC	Pb	BL	--	Pass
		Cd	BL	--	
		Hg	BL	--	
		Cr(Cr(VI))	BL	--	
		Br(PBBs&PBDEs)	BL	--	
		Phthalate(DBP/BBP /DEHP/DIBP)	--	N.D.	
112	Inductor	Pb	BL	--	Pass
		Cd	BL	--	
		Hg	BL	--	
		Cr(Cr(VI))	BL	--	
		Br(PBBs&PBDEs)	BL	--	
		Phthalate(DBP/BBP /DEHP/DIBP)	--	N.D.	
113	Black resistance	Pb	BL	--	Pass
		Cd	BL	--	
		Hg	BL	--	
		Cr(Cr(VI))	BL	--	
		Br(PBBs&PBDEs)	BL	--	
		Phthalate(DBP/BBP /DEHP/DIBP)	--	N.D.	
114	Inductor	Pb	BL	--	Pass
		Cd	BL	--	
		Hg	BL	--	
		Cr(Cr(VI))	BL	--	
		Br(PBBs&PBDEs)	BL	--	
		Phthalate(DBP/BBP /DEHP/DIBP)	--	N.D.	

TEST REPORT

Report No.:MTi230907002-04C1

Page 26 of 49

Part No.	Sample Description	Test item	XRF Result	Chemical Test (mg/kg)	Conclusion
115	Black IC	Pb	BL	--	Pass
		Cd	BL	--	
		Hg	BL	--	
		Cr(Cr(VI))	BL	--	
		Br(PBBs&PBDEs)	BL	--	
		Phthalate(DBP/BBP /DEHP/DIBP)	--	N.D.	
116	Black IC	Pb	BL	--	Pass
		Cd	BL	--	
		Hg	BL	--	
		Cr(Cr(VI))	BL	--	
		Br(PBBs&PBDEs)	BL	--	
		Phthalate(DBP/BBP /DEHP/DIBP)	--	N.D.	
117	Black IC	Pb	BL	--	Pass
		Cd	BL	--	
		Hg	BL	--	
		Cr(Cr(VI))	BL	--	
		Br(PBBs&PBDEs)	BL	--	
		Phthalate(DBP/BBP /DEHP/DIBP)	--	N.D.	
118	Black IC	Pb	BL	--	Pass
		Cd	BL	--	
		Hg	BL	--	
		Cr(Cr(VI))	BL	--	
		Br(PBBs&PBDEs)	BL	--	
		Phthalate(DBP/BBP /DEHP/DIBP)	--	N.D.	
119	White capacitor	Pb	BL	--	Pass
		Cd	BL	--	
		Hg	BL	--	
		Cr(Cr(VI))	BL	--	
		Br(PBBs&PBDEs)	BL	--	
		Phthalate(DBP/BBP /DEHP/DIBP)	--	N.D.	

TEST REPORT

Report No.:MTi230907002-04C1

Page 27 of 49

Part No.	Sample Description	Test item	XRF Result	Chemical Test (mg/kg)	Conclusion
120	Silver metal	Pb	BL	--	Pass
		Cd	BL	--	
		Hg	BL	--	
		Cr(Cr(VI))	BL	--	
		Br(PBBs&PBDEs)	/	/	
		Phthalate(DBP/BBP /DEHP/DIBP)	/	/	
121	Black IC	Pb	BL	--	Pass
		Cd	BL	--	
		Hg	BL	--	
		Cr(Cr(VI))	BL	--	
		Br(PBBs&PBDEs)	BL	--	
		Phthalate(DBP/BBP /DEHP/DIBP)	--	N.D.	
122	Inductor	Pb	BL	--	Pass
		Cd	BL	--	
		Hg	BL	--	
		Cr(Cr(VI))	BL	--	
		Br(PBBs&PBDEs)	BL	--	
		Phthalate(DBP/BBP /DEHP/DIBP)	--	N.D.	
123	Green PCB	Pb	BL	--	Pass
		Cd	BL	--	
		Hg	BL	--	
		Cr(Cr(VI))	BL	--	
		Br(PBBs&PBDEs)	BL	--	
		Phthalate(DBP/BBP /DEHP/DIBP)	--	N.D.	
124	Solder	Pb	BL	--	Pass
		Cd	BL	--	
		Hg	BL	--	
		Cr(Cr(VI))	BL	--	
		Br(PBBs&PBDEs)	/	/	
		Phthalate(DBP/BBP /DEHP/DIBP)	/	/	

TEST REPORT

Report No.:MTi230907002-04C1

Page 28 of 49

Part No.	Sample Description	Test item	XRF Result	Chemical Test (mg/kg)	Conclusion
125	Switch	Pb	BL	--	Pass
		Cd	BL	--	
		Hg	BL	--	
		Cr(Cr(VI))	BL	--	
		Br(PBBs&PBDEs)	BL	--	
		Phthalate(DBP/BBP /DEHP/DIBP)	--	N.D.	
126	Black resistance	Pb	BL	--	Pass
		Cd	BL	--	
		Hg	BL	--	
		Cr(Cr(VI))	BL	--	
		Br(PBBs&PBDEs)	BL	--	
		Phthalate(DBP/BBP /DEHP/DIBP)	--	N.D.	
127	Inductor	Pb	BL	--	Pass
		Cd	BL	--	
		Hg	BL	--	
		Cr(Cr(VI))	BL	--	
		Br(PBBs&PBDEs)	BL	--	
		Phthalate(DBP/BBP /DEHP/DIBP)	--	N.D.	
128	Audion	Pb	BL	--	Pass
		Cd	BL	--	
		Hg	BL	--	
		Cr(Cr(VI))	BL	--	
		Br(PBBs&PBDEs)	BL	--	
		Phthalate(DBP/BBP /DEHP/DIBP)	--	N.D.	
129	Capacitor	Pb	BL	--	Pass
		Cd	BL	--	
		Hg	BL	--	
		Cr(Cr(VI))	BL	--	
		Br(PBBs&PBDEs)	BL	--	
		Phthalate(DBP/BBP /DEHP/DIBP)	--	N.D.	

TEST REPORT

Report No.:MTi230907002-04C1

Page 29 of 49

Part No.	Sample Description	Test item	XRF Result	Chemical Test (mg/kg)	Conclusion
130	Capacitor	Pb	BL	--	Pass
		Cd	BL	--	
		Hg	BL	--	
		Cr(Cr(VI))	BL	--	
		Br(PBBs&PBDEs)	BL	--	
		Phthalate(DBP/BBP /DEHP/DIBP)	--	N.D.	
131	Black capacitor	Pb	BL	--	Pass
		Cd	BL	--	
		Hg	BL	--	
		Cr(Cr(VI))	BL	--	
		Br(PBBs&PBDEs)	BL	--	
		Phthalate(DBP/BBP /DEHP/DIBP)	--	N.D.	
132	Silver metal	Pb	BL	--	Pass
		Cd	BL	--	
		Hg	BL	--	
		Cr(Cr(VI))	BL	--	
		Br(PBBs&PBDEs)	/	/	
		Phthalate(DBP/BBP /DEHP/DIBP)	/	/	
133	Inductor	Pb	BL	--	Pass
		Cd	BL	--	
		Hg	BL	--	
		Cr(Cr(VI))	BL	--	
		Br(PBBs&PBDEs)	BL	--	
		Phthalate(DBP/BBP /DEHP/DIBP)	--	N.D.	
134	Black capacitor	Pb	BL	--	Pass
		Cd	BL	--	
		Hg	BL	--	
		Cr(Cr(VI))	BL	--	
		Br(PBBs&PBDEs)	BL	--	
		Phthalate(DBP/BBP /DEHP/DIBP)	--	N.D.	

TEST REPORT

Report No.:MTi230907002-04C1

Page 30 of 49

Part No.	Sample Description	Test item	XRF Result	Chemical Test (mg/kg)	Conclusion
135	Capacitor	Pb	BL	--	Pass
		Cd	BL	--	
		Hg	BL	--	
		Cr(Cr(VI))	BL	--	
		Br(PBBs&PBDEs)	BL	--	
		Phthalate(DBP/BBP /DEHP/DIBP)	--	N.D.	
136	Black resistance	Pb	BL	--	Pass
		Cd	BL	--	
		Hg	BL	--	
		Cr(Cr(VI))	BL	--	
		Br(PBBs&PBDEs)	BL	--	
		Phthalate(DBP/BBP /DEHP/DIBP)	--	N.D.	
137	Inductor	Pb	BL	--	Pass
		Cd	BL	--	
		Hg	BL	--	
		Cr(Cr(VI))	BL	--	
		Br(PBBs&PBDEs)	BL	--	
		Phthalate(DBP/BBP /DEHP/DIBP)	--	N.D.	
138	Black capacitor	Pb	BL	--	Pass
		Cd	BL	--	
		Hg	BL	--	
		Cr(Cr(VI))	BL	--	
		Br(PBBs&PBDEs)	BL	--	
		Phthalate(DBP/BBP /DEHP/DIBP)	--	N.D.	
139	Black IC	Pb	BL	--	Pass
		Cd	BL	--	
		Hg	BL	--	
		Cr(Cr(VI))	BL	--	
		Br(PBBs&PBDEs)	BL	--	
		Phthalate(DBP/BBP /DEHP/DIBP)	--	N.D.	

TEST REPORT

Report No.:MTi230907002-04C1

Page 31 of 49

Part No.	Sample Description	Test item	XRF Result	Chemical Test (mg/kg)	Conclusion
140	Black resistance	Pb#	OL	5849#	Exempt
		Cd	BL	--	
		Hg	BL	--	
		Cr(Cr(VI))	BL	--	
		Br(PBBs&PBDEs)	BL	--	
		Phthalate(DBP/BBP /DEHP/DIBP)	--	N.D.	
141	Black resistance	Pb	BL	--	Pass
		Cd	BL	--	
		Hg	BL	--	
		Cr(Cr(VI))	BL	--	
		Br(PBBs&PBDEs)	BL	--	
		Phthalate(DBP/BBP /DEHP/DIBP)	--	N.D.	
142	Black resistance	Pb#	OL	4747#	Exempt
		Cd	BL	--	
		Hg	BL	--	
		Cr(Cr(VI))	BL	--	
		Br(PBBs&PBDEs)	BL	--	
		Phthalate(DBP/BBP /DEHP/DIBP)	--	N.D.	
143	Black IC	Pb	BL	--	Pass
		Cd	BL	--	
		Hg	BL	--	
		Cr(Cr(VI))	BL	--	
		Br(PBBs&PBDEs)	BL	--	
		Phthalate(DBP/BBP /DEHP/DIBP)	--	N.D.	
144	Black IC	Pb	BL	--	Pass
		Cd	BL	--	
		Hg	BL	--	
		Cr(Cr(VI))	BL	--	
		Br(PBBs&PBDEs)	BL	--	
		Phthalate(DBP/BBP /DEHP/DIBP)	--	N.D.	

TEST REPORT

Report No.:MTi230907002-04C1

Page 32 of 49

Part No.	Sample Description	Test item	XRF Result	Chemical Test (mg/kg)	Conclusion
145	Black IC	Pb	BL	--	Pass
		Cd	BL	--	
		Hg	BL	--	
		Cr(Cr(VI))	BL	--	
		Br(PBBs&PBDEs)	BL	--	
		Phthalate(DBP/BBP /DEHP/DIBP)	--	N.D.	
146	Diode	Pb	BL	--	Pass
		Cd	BL	--	
		Hg	BL	--	
		Cr(Cr(VI))	BL	--	
		Br(PBBs&PBDEs)	BL	--	
		Phthalate(DBP/BBP /DEHP/DIBP)	--	N.D.	
147	Electron device	Pb	BL	--	Pass
		Cd	BL	--	
		Hg	BL	--	
		Cr(Cr(VI))	BL	--	
		Br(PBBs&PBDEs)	BL	--	
		Phthalate(DBP/BBP /DEHP/DIBP)	--	N.D.	
148	Black IC	Pb**	OL	4172**	Exempt
		Cd	BL	--	
		Hg	BL	--	
		Cr(Cr(VI))	BL	--	
		Br(PBBs&PBDEs)	BL	--	
		Phthalate(DBP/BBP /DEHP/DIBP)	--	N.D.	
149	Yellow capacitor	Pb	BL	--	Pass
		Cd	BL	--	
		Hg	BL	--	
		Cr(Cr(VI))	BL	--	
		Br(PBBs&PBDEs)	BL	--	
		Phthalate(DBP/BBP /DEHP/DIBP)	--	N.D.	

TEST REPORT

Report No.:MTi230907002-04C1

Page 33 of 49

Part No.	Sample Description	Test item	XRF Result	Chemical Test (mg/kg)	Conclusion
150	Green PCB	Pb	BL	--	Pass
		Cd	BL	--	
		Hg	BL	--	
		Cr(Cr(VI))	BL	--	
		Br(PBBs&PBDEs)	BL	--	
		Phthalate(DBP/BBP /DEHP/DIBP)	--	N.D.	

Remark:

- (1) (a) It is the result on total Br while test item on restricted substances is PBBs/PBDEs. It is the result on total Cr while test item on restricted substances is Cr⁶⁺.
- (b) Results are obtained by XRF for primary screening, and further chemical testing by ICP-OES (for Cd, Pb, Hg), UV-Vis (for Cr(VI)) and GC-MS (for PBBs, PBDEs) is recommended to be performed, if the concentration exceeds the below warning value according to IEC62321-3-1:2013 (unit: mg/kg).

Element	Polymers	Metals	Composite Material
Cd	$BL \leq (70-3\sigma) < X < (130+3\sigma) \leq OL$	$BL \leq (70-3\sigma) < X < (130+3\sigma) \leq OL$	$LOD < X < (150+3\sigma) \leq OL$
Pb	$BL \leq (700-3\sigma) < X < (1300+3\sigma) \leq OL$	$BL \leq (700-3\sigma) < X < (1300+3\sigma) \leq OL$	$BL \leq (500-3\sigma) < X < (1500+3\sigma) \leq OL$
Hg	$BL \leq (700-3\sigma) < X < (1300+3\sigma) \leq OL$	$BL \leq (700-3\sigma) < X < (1300+3\sigma) \leq OL$	$BL \leq (500-3\sigma) < X < (1500+3\sigma) \leq OL$
Cr	$BL \leq (700-3\sigma) < X$	$BL \leq (700-3\sigma) < X$	$BL \leq (500-3\sigma) < X$
Br	$BL \leq (300-3\sigma) < X$	NA	$BL \leq (250-3\sigma) < X$

(c) OL=Over Limit, BL=Below Limit, X=inconclusive, LOD=Limit of Detection, /=not applicable, -- = No Testing

(d) The XRF screening test for RoHS elements-The reading may be different to the actual content in the sample be of non-uniformity composition

(2) (a) mg/kg=ppm=0.0001%, N.D.=not detected (<MDL)

(b) Unit and Method Detection Limit(MDL) in wet chemical test

Test Items	Unit	MDL	Limit
Pb	mg/kg	2	1000
Cd	mg/kg	2	100
Hg	mg/kg	2	1000
Cr ⁶⁺	mg/kg	See below	1000
PBBs	mg/kg	See below	1000
PBDEs	mg/kg	See below	1000
DBP	mg/kg	50	1000
BBP	mg/kg	50	1000
DEHP	mg/kg	50	1000
DIBP	mg/kg	50	1000

The MDL for single compound of PBBs & PBDEs is 20mg/kg, MDL of Cr⁶⁺ for metal sample is 0.10µg/cm². and MDL of Cr⁶⁺ for polymer & composite sample is 8 mg/kg.

(c) Metal sample:

-The sample is positive for Cr⁶⁺ if the Cr⁶⁺ concentration is greater than 0.13 µg/cm².

The sample coating is considered to contain Cr⁶⁺.

-The sample is negative for Cr⁶⁺ if Cr⁶⁺ is ND (concentration less than 0.10 µg/cm²).

The coating is considered a non- Cr⁶⁺ based coating

-The result between 0.10 µg/cm² and 0.13 µg/cm² is considered to be inconclusive, unavoidable coating variations may influence the determination

Information on storage conditions and production date of the tested sample is unavailable and thus Cr⁶⁺ results represent status of the sample at the time of testing.

(3) As specified by client to test the specified materials only.

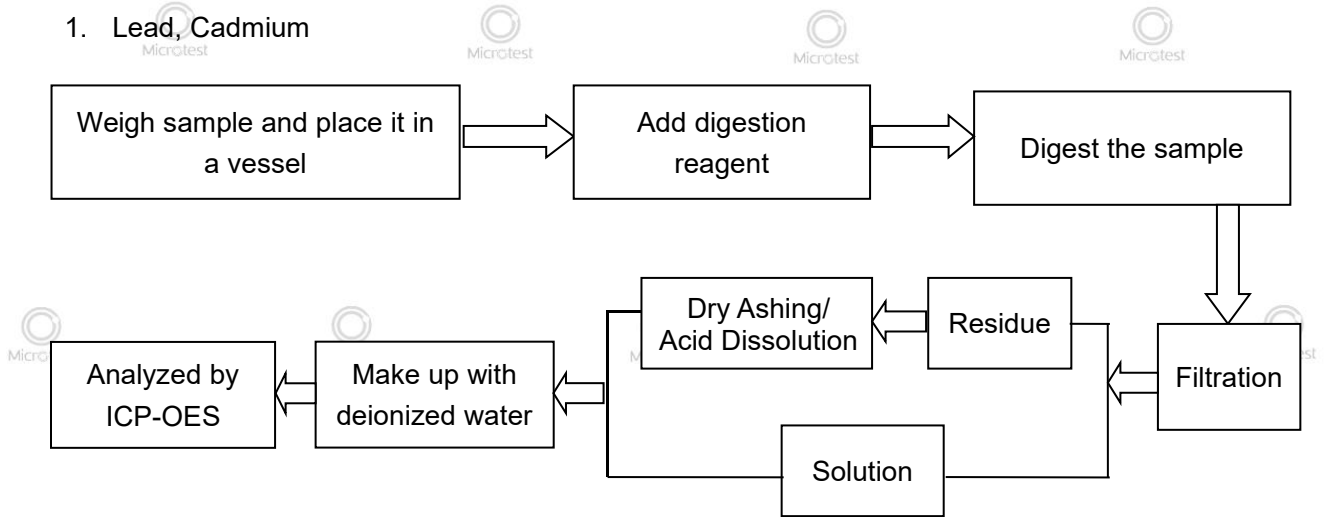
(4) *=According to the declaration from the client, Lead (Pb) in the sample are exempted by EU RoHS Directive 2011/65/EU based on ANNEX III 6(c): Copper alloy containing no more than 4% lead by weigh

(5) #=According to the declaration from the client, Lead (Pb) in the sample are exempted by EU RoHS Directive 2011/65/EU based on ANNEX III 7(c)-I, Electrical and electronic components containing lead in a glass or ceramic other than dielectric ceramic in capacitors

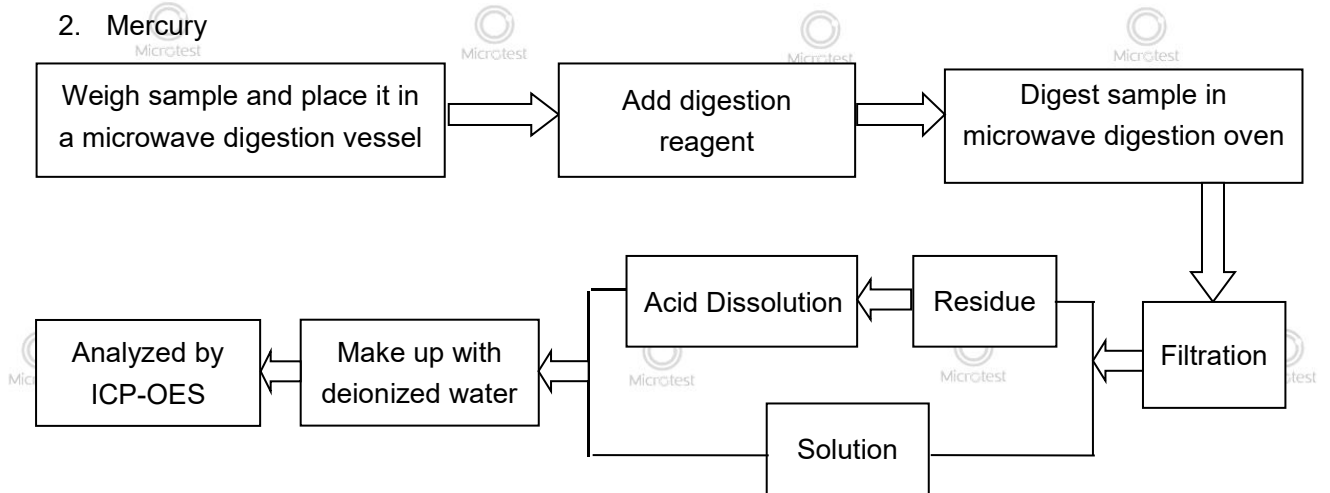
(6) **=Lead in high melting temperature type solders (i.e. lead-based alloys containing 85 % by weight or more lead)

Testing flow chart:

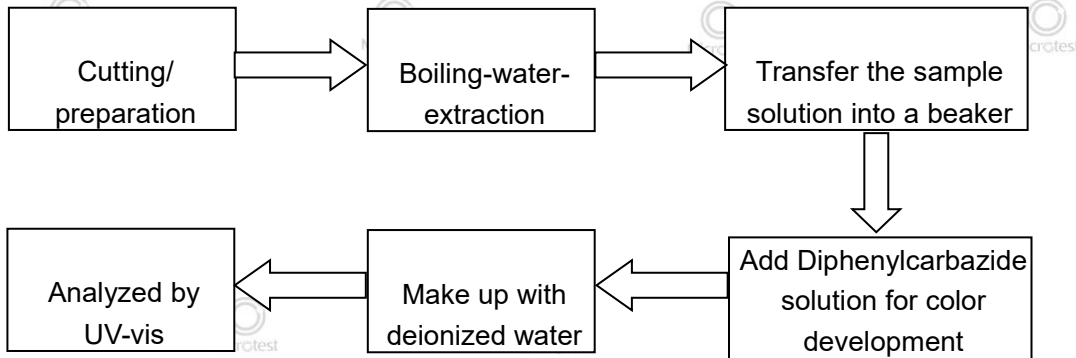
1. Lead, Cadmium



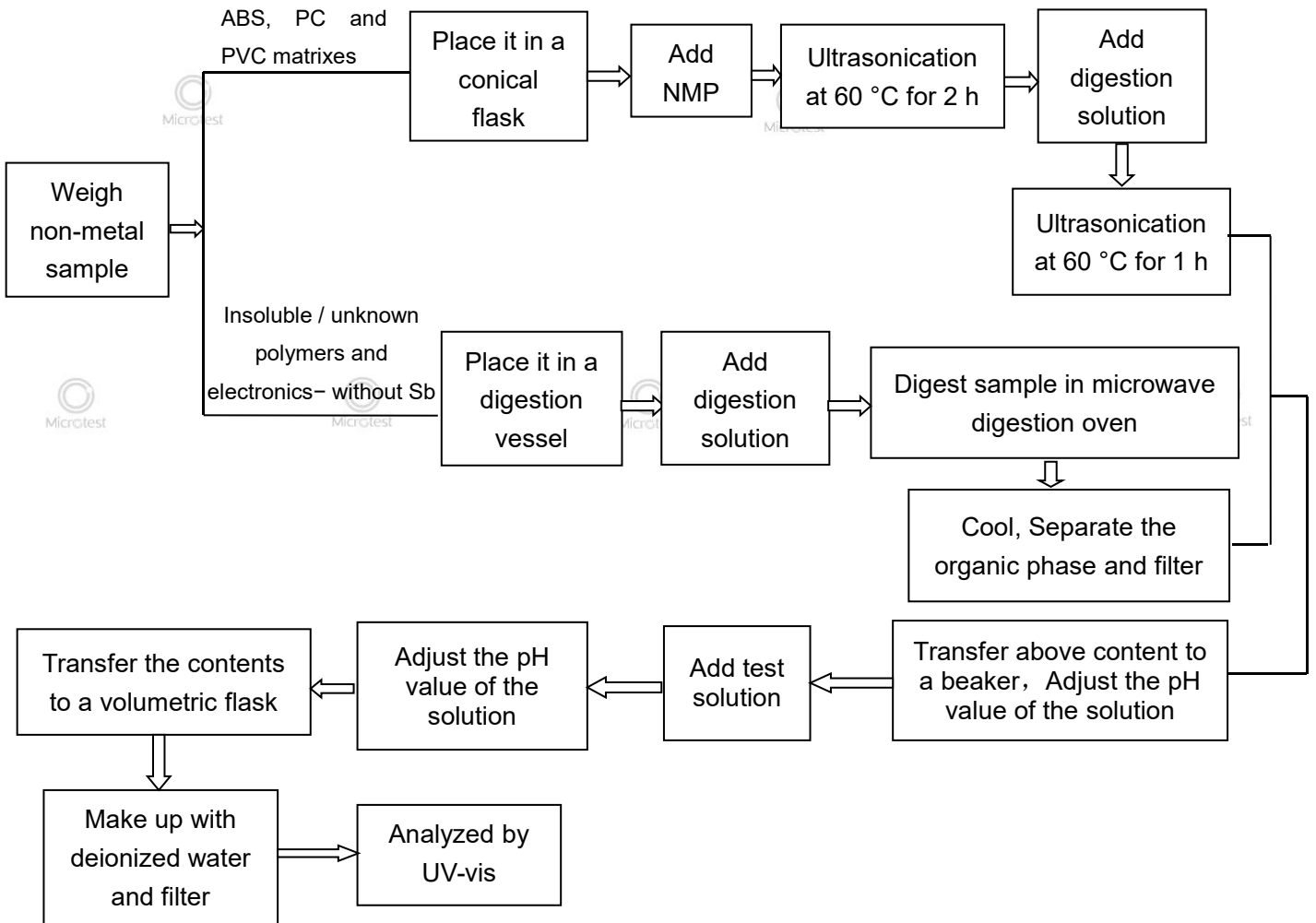
2. Mercury



3. Hexavalent Chromium (For metal material)

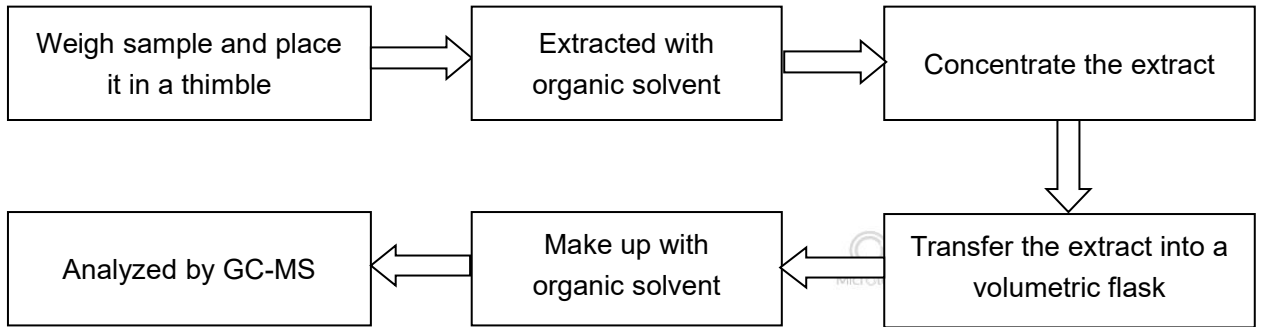


4. Hexavalent Chromium(For non-metal material):

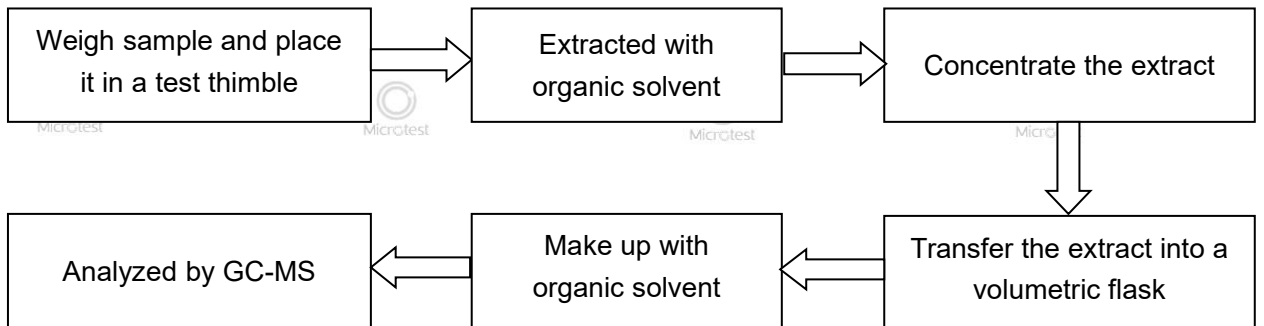




5. Polybromobiphenyls (PBBs), Polybromodiphenyl ethers (PBDEs)

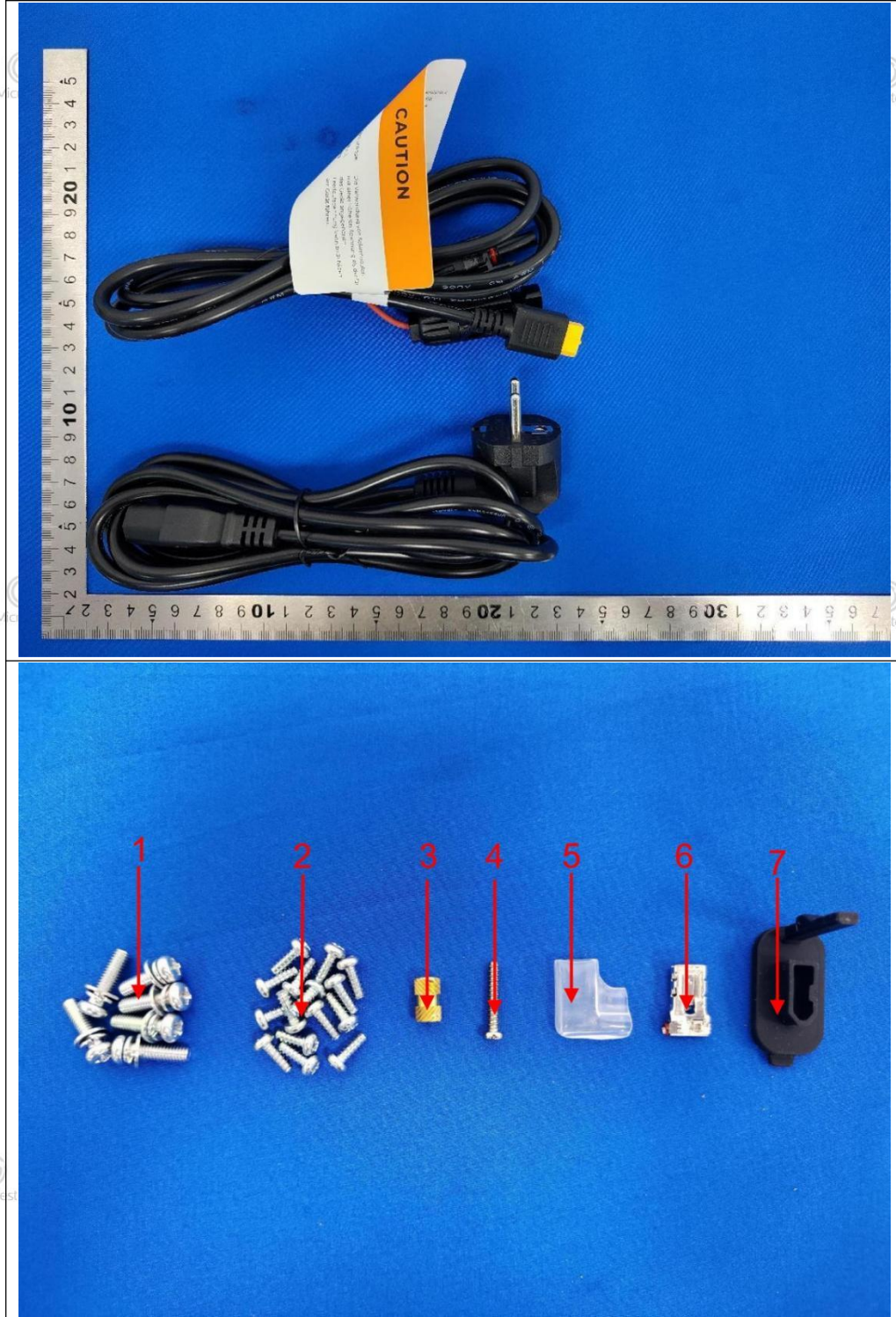


6. Phthalates(DBP, BBP, DEHP, DIBP)

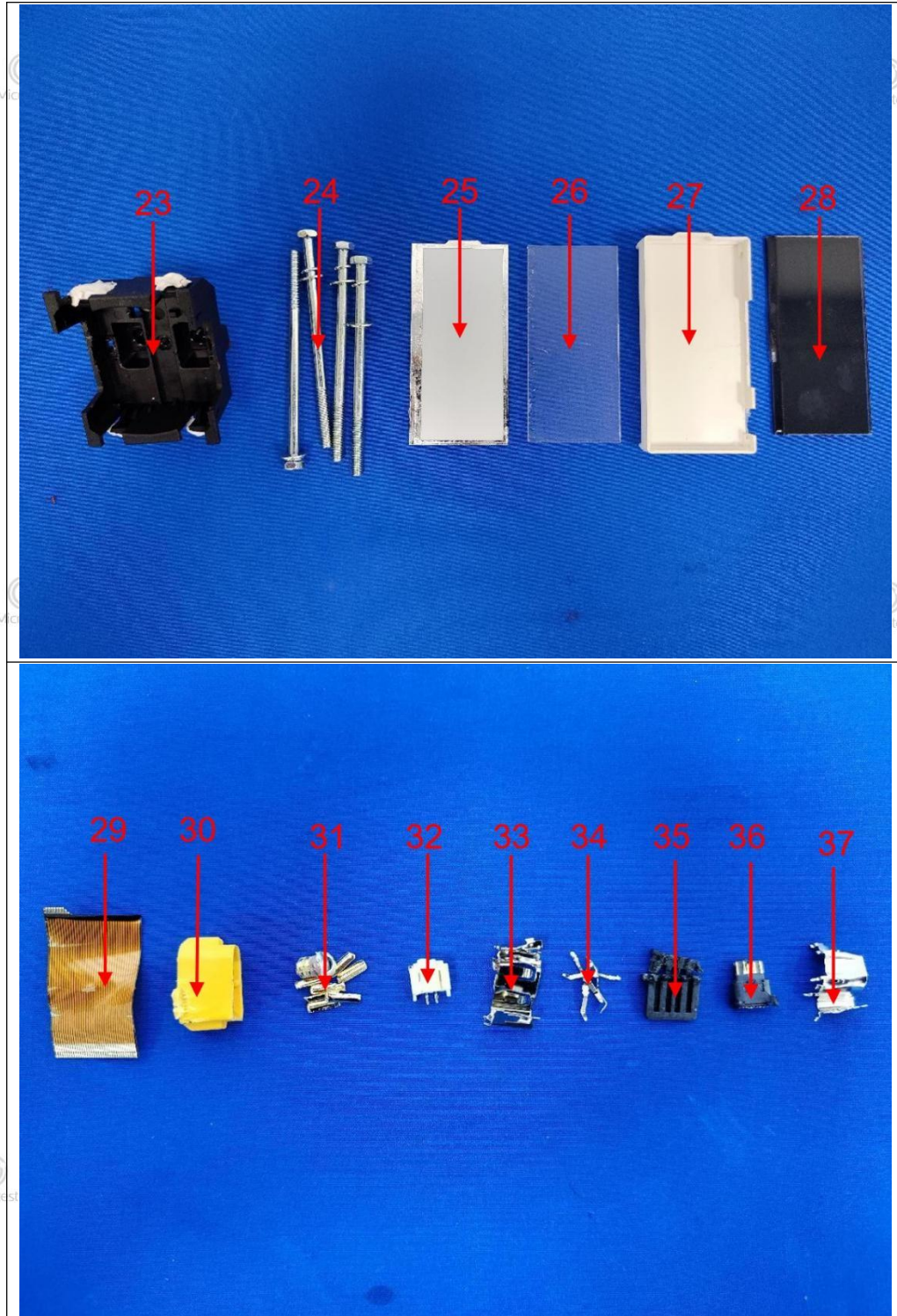


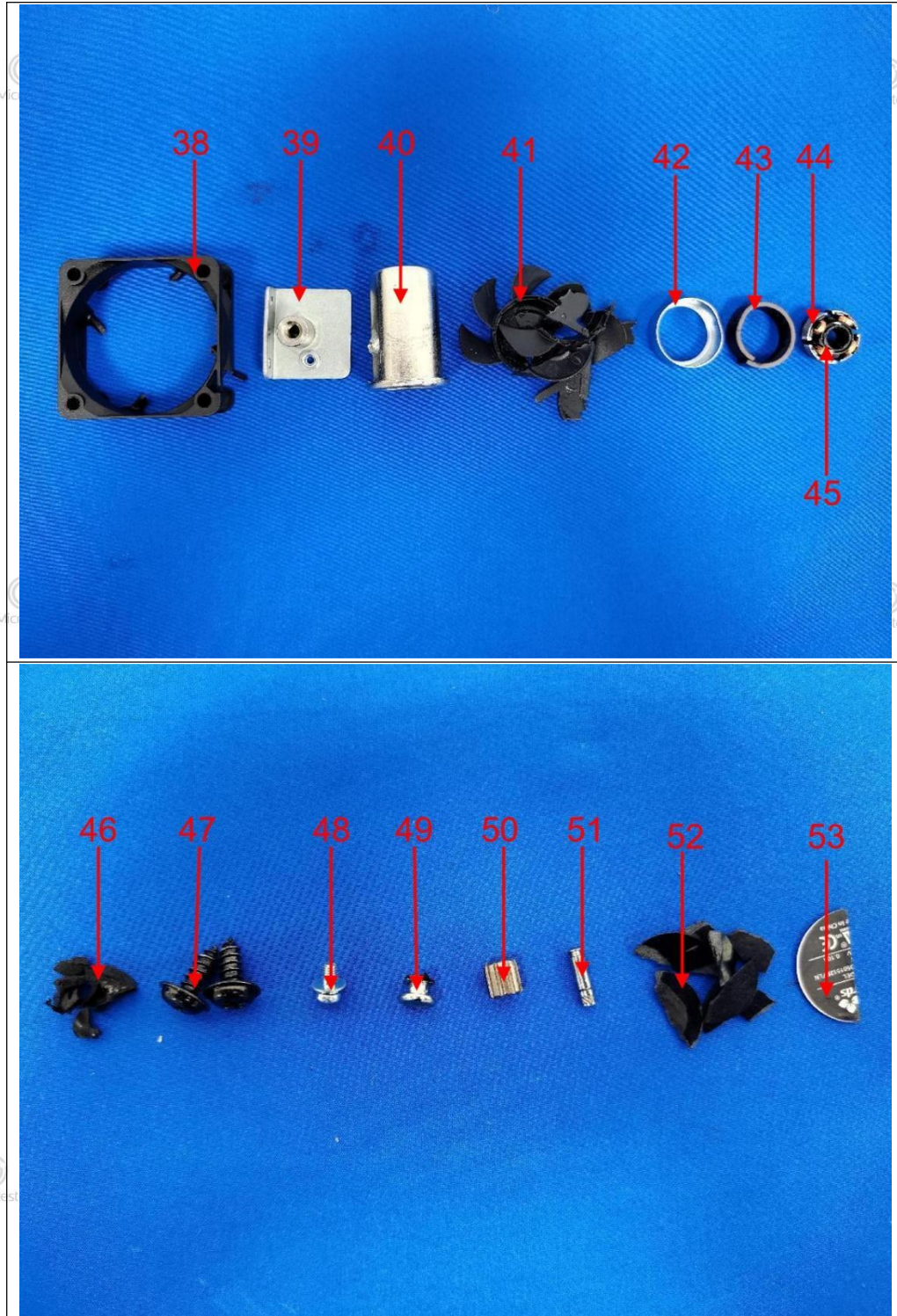
Pictures

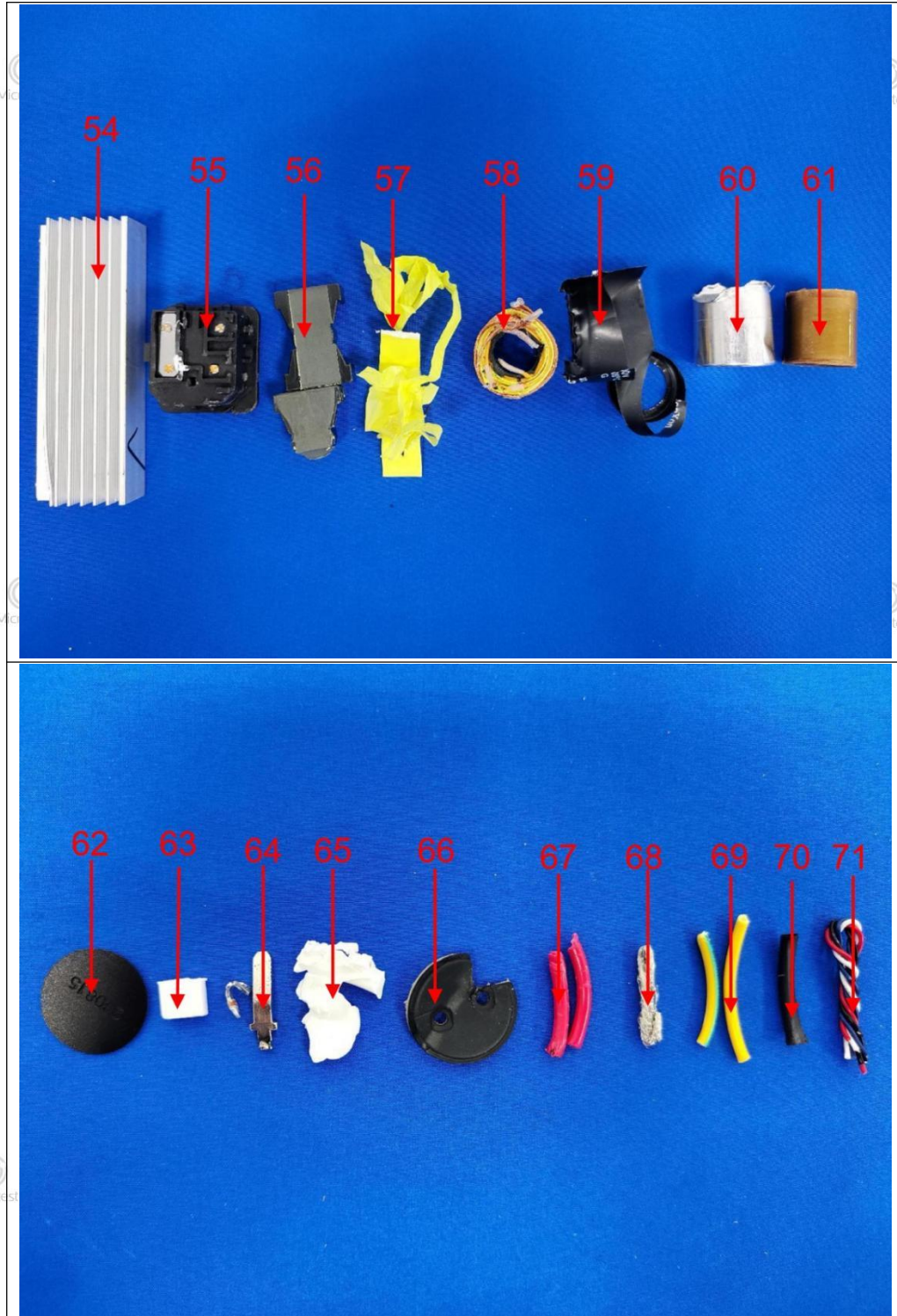


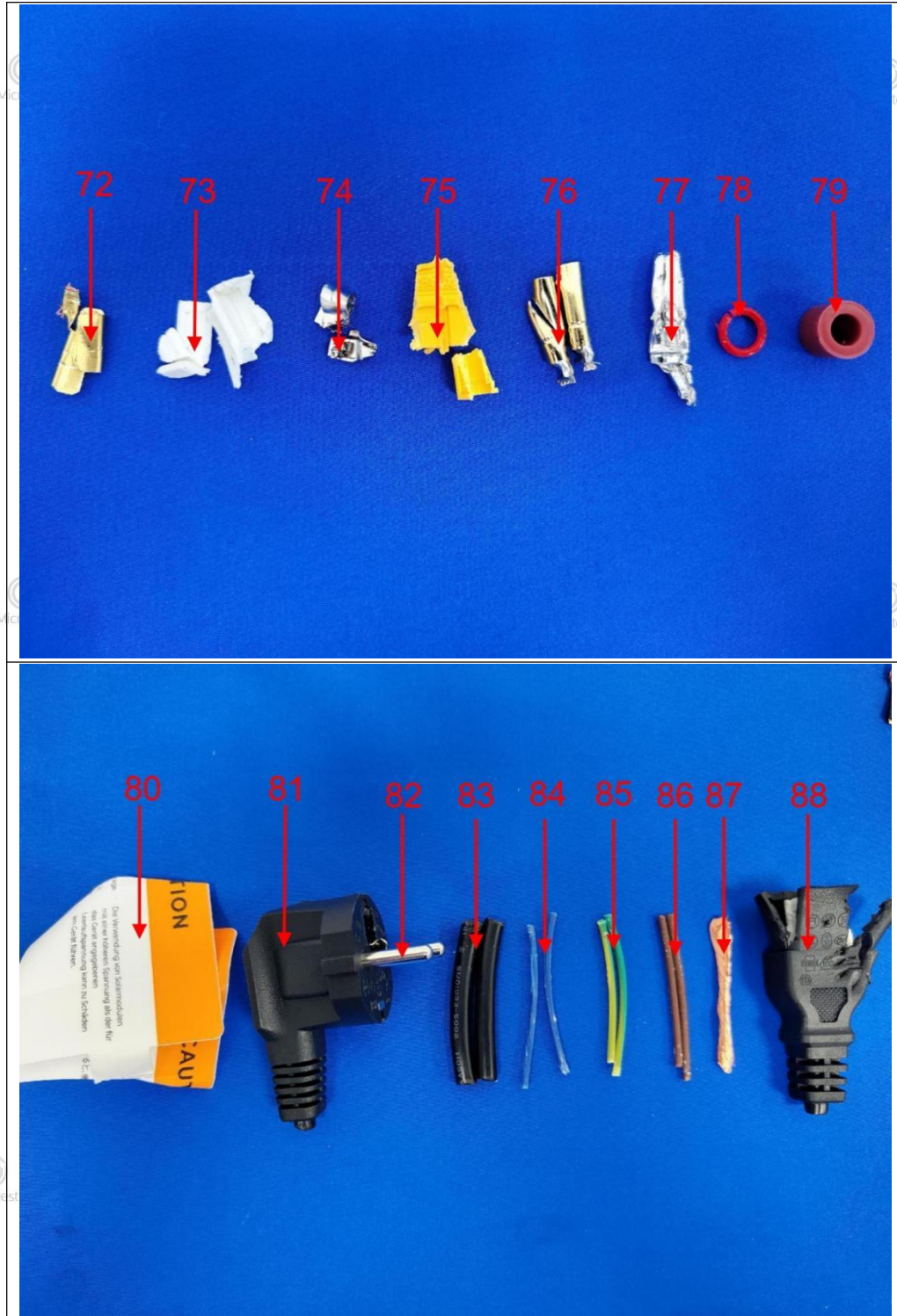




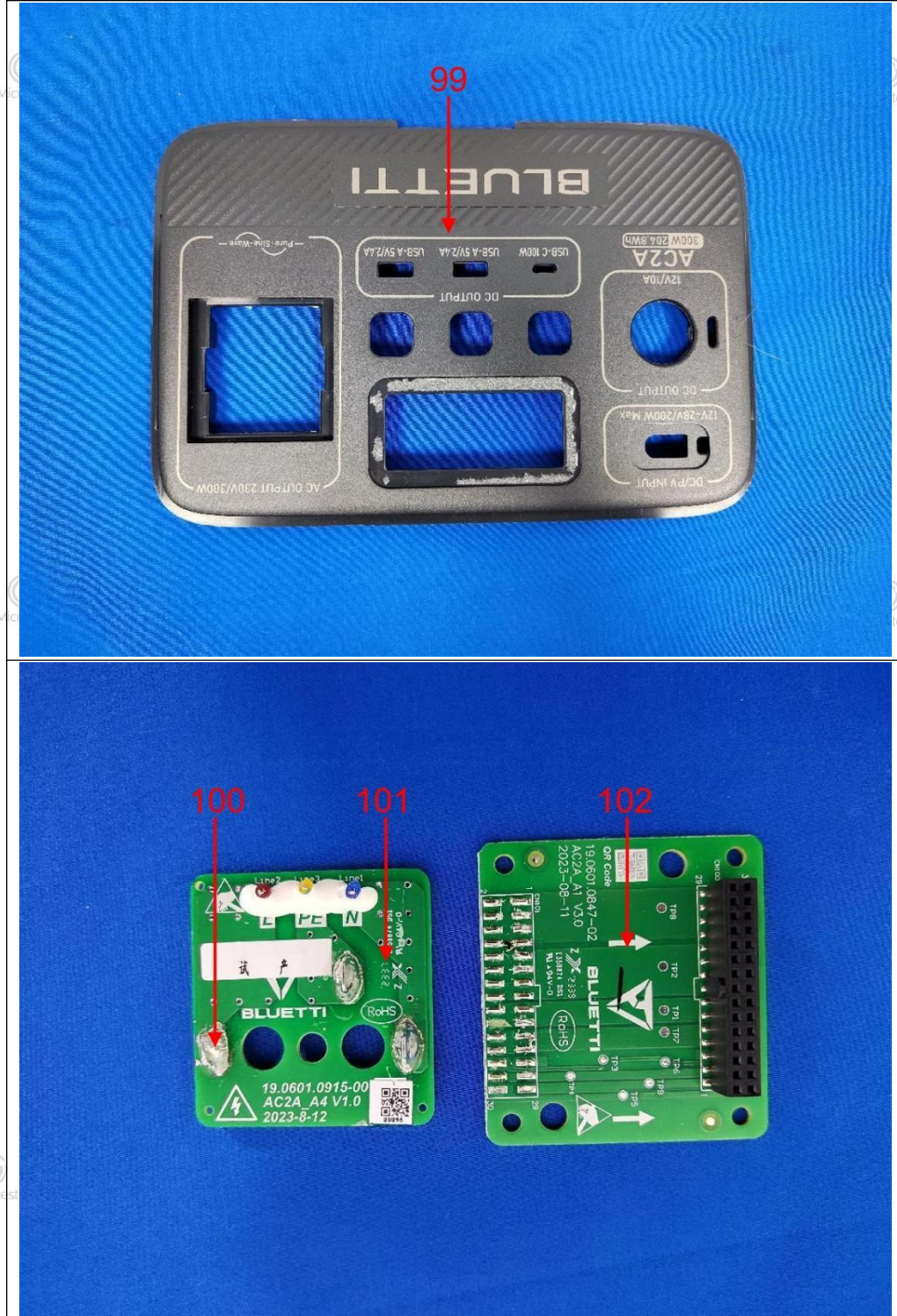


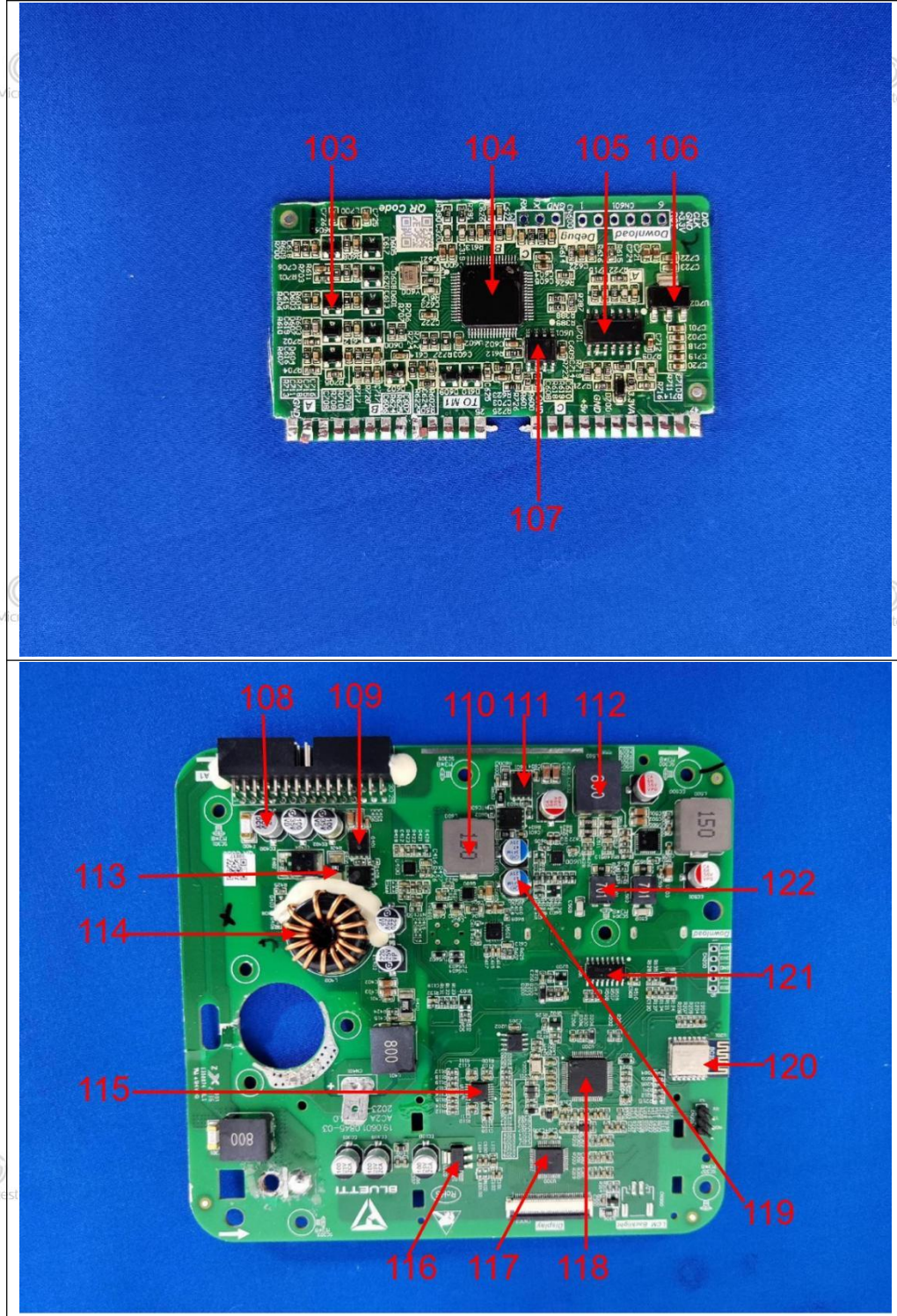


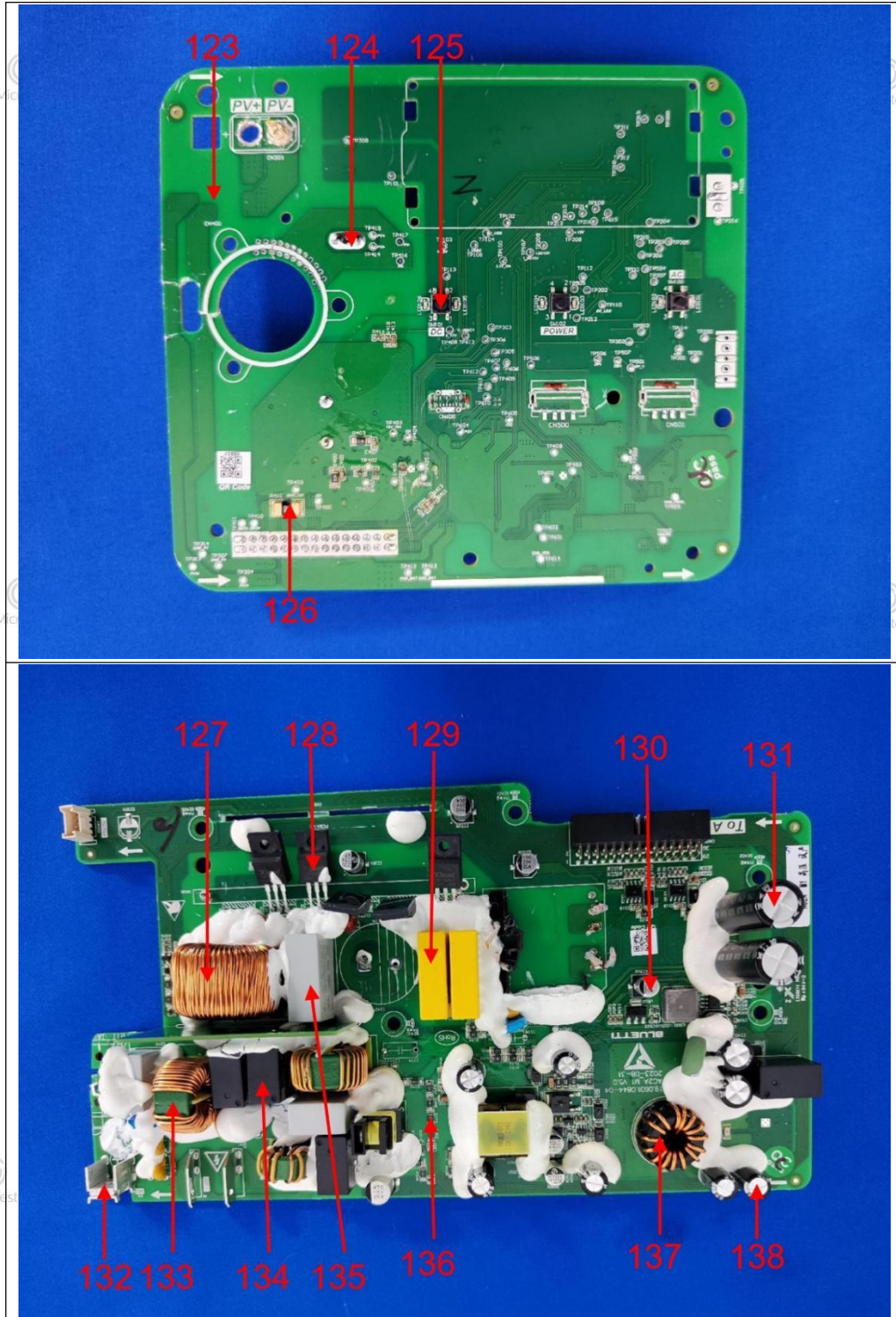


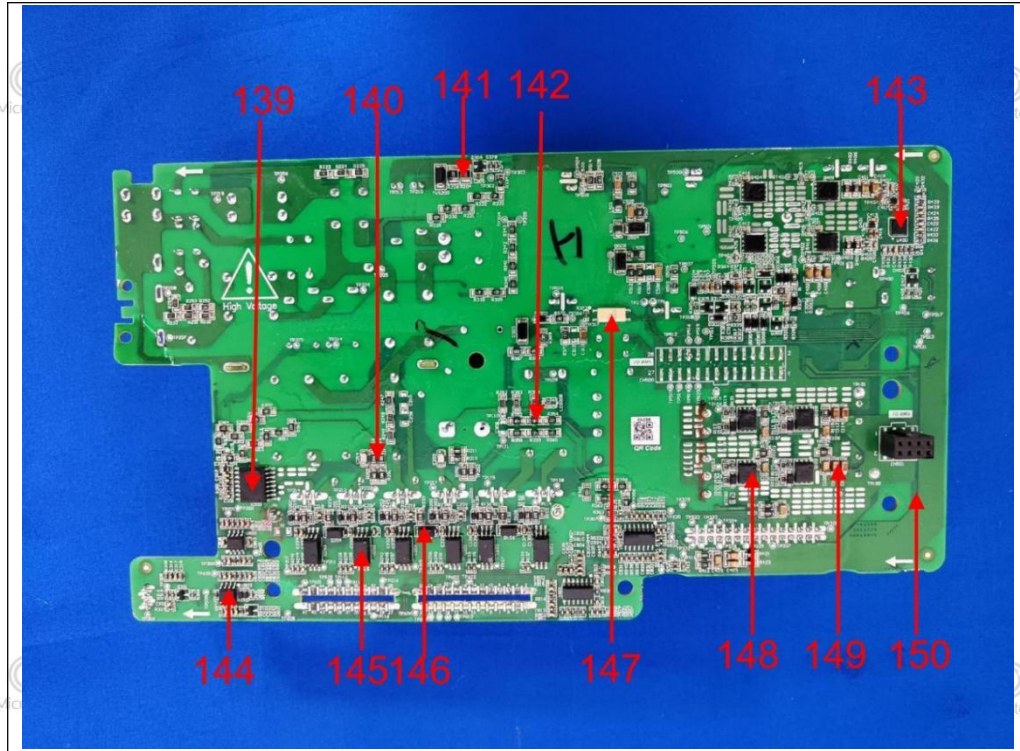












***** END *****