

RC HomeDecor

Home at its best!

Ergonomic Office Chair

By Chasryan LLC



RC HomeDecor

By Chasryan LLC

By Chasryan LLC

Contact:

Ryan Sankar

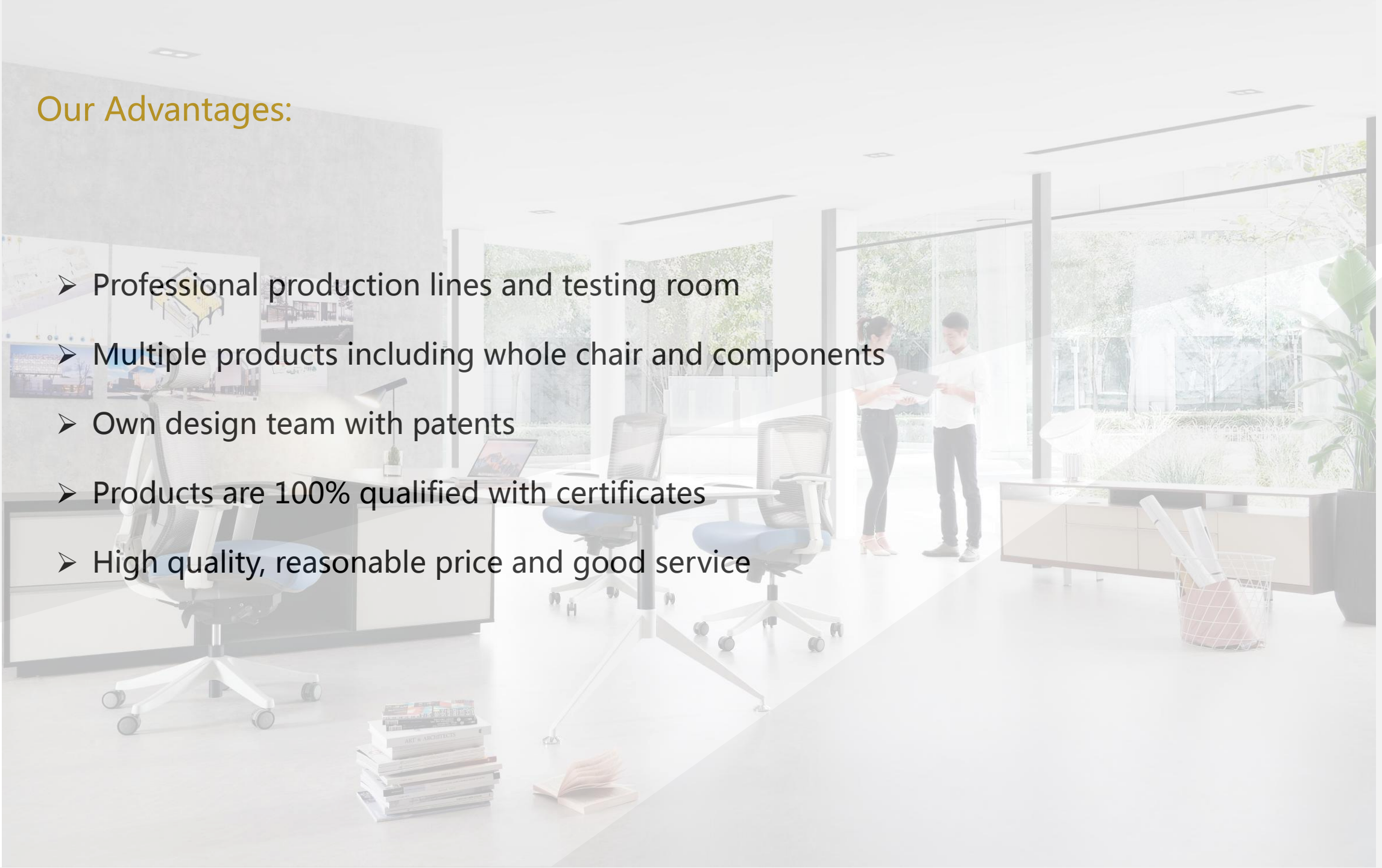
832-518-8942

Chasryanllc@gmail.com

<https://rc-homedecor.com/>

Our Advantages:

- Professional production lines and testing room
- Multiple products including whole chair and components
- Own design team with patents
- Products are 100% qualified with certificates
- High quality, reasonable price and good service



Products
office chair



1001-1



1001-2



1001-3



1002



1003



1005



1006



1018



1018



1019



2001



2001-SBD



2001-SBD



2002



Products

office chair



2002



2006



2007



2008



2009



2019



2019



2019



2019



3001



3001



3002



3002



3003

Products
office chair



3003



3003



3004



3005



3005



3007



3007



3008



3009



3016



3018



3111



3112



3188

Products

office chair



5001



5001



5001



5001



5001



5002



5002



5002



5002



5018



5188



5188



5188



5188Pro

Products

lether chair



7001



7002



7003



7003-1



8001



8001

NO:5001 STAR MODEL



NO: 5001



Key Feature:

1. Black/White frame with 4D armrest.
2. Mesh back and fabric seat. (All mesh is optional)
3. Multi-functional mechanism with the function of adjusting the height of the seat, back tilt and locking at 5 gears, seating slide and seat tilt 5°, backframe push forward function.
4. Flexible lumbar support for any seated position.

- 20' GP: 134 pcs
- 40' HQ: 330 pcs
- Product Size: 72.5*64-68*117-133cm
- CTN Size: 71*65*45cm

NO:5001

Meet the ergonomics design



NO: 5002

Meet the ergonomics design



Key Feature:

1. Dynamic lumbar support
2. Multi-function mechanism, with the functions of adjustable seat height, seat slide, leaning back and tilting locking at 5 locking position.
3. Adjustable headrest
4. 4D armrest

NO: 5002

Meet the ergonomics design



N0:5188 Pro



Key Feature:

1. High-end manager chair, boss chair, fashion appearance, meet the ergonomic design.
2. Multi-function mechanism, with the functions of adjustable seat height, seat slide, leaning back and tilting locking at 5 locking position.
3. Adjustable headrest and lumbar support.
4. 4D aluminum armrest and aluminum base.
5. Optional footrest.



HIGH-END ERGONOMIC CHAIR

N0:5188 Pro



Adjustable headrest



Adjustable lumbar support/backrest (up and down)



Aluminium frame



Plating castor



NO:5188



Key Feature:

1. High-end manager chair, boss chair, fashion appearance, meet the ergonomic design.
2. Multi-function mechanism, with the functions of adjustable seat height, seat slide, leaning back and tilting locking at 5 position
3. Adjustable headrest and lumbar support.
4. 4D armrest and nylon base.



NO: 3007



Key Feature:

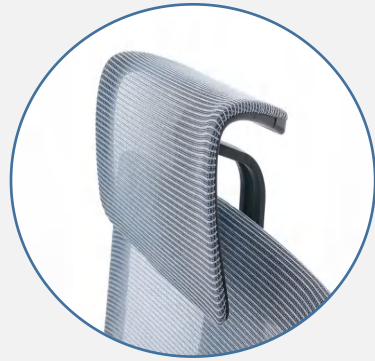
1. High-end ergonomic office chair with adjustable headrest.
2. 3D armrest with PU cover.
3. Multi-functional mechanism with height adjustment, tilt back, seat slide and tilt lock at 4 positions functions .
4. Mould foam cushion or all mesh is optional.
5. The height of back can be adjusted up and down.



- 20' GP: 151 pcs
- 40' HQ: 351 pcs
- Product Size: 68.5*65*110-130.5cm
- CTN Size: 75*38*65cm



NO: 3007



NO: 3008

Key Feature:

1. Middle-end staff chair with adjustable lumbar support.
2. Fixed/2D/3D armrest, leaning back function, the maximum angle can reach 110 degrees, which is suitable for using multi posture for working in the office.



NO:3111



Key Feature:

1. Middle-end staff chair with adjustable lumbar support. Also can equip with the headrest and footrest.
2. Fixed/2D/3D/4D armrest, Can match a variety of different mechanisms.



NO:3112

Key Feature:

1. Middle-end staff chair with adjustable lumbar support. Also can equip with the headrest and footrest.
2. Fixed/2D/3D/4D armrest, Can match a variety of different mechanisms.



NO:3112



NO: 1003



Key Feature:

1. Black plastic, spraying frame with PU castors.
2. Mesh back and fabric seat.
3. Simple mechanism, flip-up armrest.

- Product Size: D64*W66.5*H96.5-105CM
- CTN Size: 62*25*60CM

NO: 1018



Key Feature:

1. Black/White frame with fixed armrest and lumbar support.
2. Simple mechanism with the functions of adjusting the seat height and leaning back.

- 20' GP: 252pcs
- 40' HQ : 640pcs
- Product Size: 64*61*99-107cm
- CTN Size: 62*27*61.5cm



NO:2001



Key Feature:

1. Black/White frame with fixed armrest.
2. Simple mechanism with the functions of adjusting the seat height and leaning back.
3. OX horn frame, can add customized logo in middle position of the back.

- 20' GP: 285pcs
- 40' HQ : 660pcs
- Product Size: 62*61*89-97cm
- CTN Size: 62*28*60cm



NO: 3004



Key Feature:

1. Black /white frame with fixed headrest.
 2. Swivel tilt mechanism with height adjustment, tilt back and tilt lock at upright position.
 3. Fixed/2D armrest optional.
 4. Adjustable lumbar support.
- Product Size: 70*62.5*116.5-125cm
 - CTN Size: 75*31*60cm

NO:3016



Key Feature:

1. Middle-end ergonomic chair, high elastic mesh and sponge, adjustable headrest and lumbar support.
2. Fixed/2D armrest optional.
3. Multi-functional mechanism, the back can be locked at four gears, which is convenient for rest.



NO:3018

Key Feature:

1. High-end ergonomic chair with adjustable headrest.
2. Multi-functional mechanism, the back can be locked at four gears.
3. High elastic mesh and high resilience sponge, adjustable headrest and lumbar support.
4. 2D /3D armrest.

- 20' GP: 197 pcs
- 40' HQ: 457 pcs
- Product Size: 70.5*65*115-131cm
- CTN Size: 73*30*65cm



NO: 3005

Key Feature:

1. Black /white frame with adjustable headrest.
2. Swivel tilt mechanism with height adjustment, tilt back and tilt lock at upright position.
3. Fixed/2D armrest optional.
4. Adjustable lumbar support/headrest optional.



NO:2002

Key Feature:

1. Black/White frame with adjustable armrest.
2. Mesh back and fabric seat.
3. Armrests with knobs to adjust the height according to demand.
4. Cushioned seat back synchronized tilt.

- 20' GP: 225 pcs
- 40' HQ: 556 pcs
- Product Size: 67*62*94-102.5cm
- CTN Size: 61*28.5*67.5cm



NO: 3003

Key Feature:

1. Black /white frame with linkage armrest.
2. Armrest links with the back,the chair can be easily folded within 10 seconds.
3. 4 gears locked mechanism, can easily be operated.
3. Footrest/headrest optional.



NO:3002



Key Feature:

1. Black/White frame with adjustable armrest.
2. Multi-functional mechanism, can be easily locked at any angle.
3. Fixed headrest.

- 20' GP: 168 pcs
- 40' HQ: 413 pcs
- Product Size:77.5*60*97.5-106cm
- CTN SIZE: 69*31*64cm

NO: 3001

Key Feature:

1. Black/White frame with flip-up armrest.
2. Elastic mesh back and high resilience sponge seat.
3. Simple mechanism with the functions of adjusting the seat height and leaning back.

- 20' GP: 195 pcs
- 40' HQ: 504 pcs
- Product Size: 65.5*60*97.5-106cm
- CTN SIZE: 69*31*64cm



NO:2006



Key Feature:

- 1.PP material of back and soft cushion seat.
- 2.Invisible handle, the whole chair can be raised and lowered

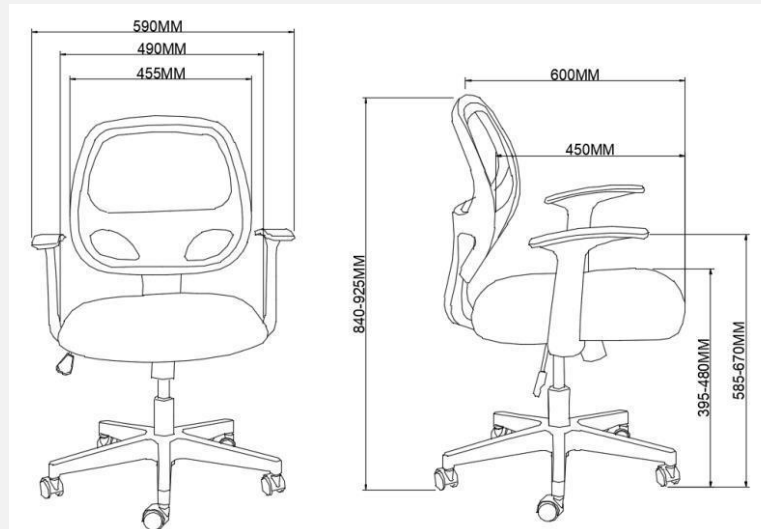


NO: 1002

Key Feature:

1. Black plastic, spraying frame with PU castors.
2. Mesh back and fabric seat.
3. Simple mechanism, Fixed armrest

- Product Size: 60D*59W*84-92.5Hcm
- CTN Size: 59L*27W*56Hcm



NO:1001-1



• Key Feature:

1. Black plastic, spraying frame with lock catch. Stable and firm.
2. Mesh back and fabric seat.

- 20' GP: 220 pcs
- 40' HQ : 592 pcs
- Product Size: 64*46*82cm
- CTN Size: 97*78*51cm



NO:1001-2

Key Feature:

1. Black plastic, spraying tube frame.
2. Mesh back and fabric seat.

- 20' GP: 264 pcs
- 40' HQ : 540 pcs
- Product Size: 61*46*82cm
- CTN Size: 92*78*48cm



NO:1001-3



Key Feature:

1. Black plastic, spraying frame with PU castors.
2. Mesh back and fabric seat.
3. The seat can be folded, which is helpful to stack up to save office space.

- 20' GP: 200 pcs
- 40' HQ : 560 pcs
- Product Size: 64*46*82cm
- CTN Size: 115*83*50cm

NO:2001S



Key Feature:

1. Dark grey plastic spraying frame .
2. Mesh back and fabric seat.
3. Collapsible seat, stacked together to save space and more neat.
4. The table is optional.

- 20' GP: 184pcs
- 40' HQ : 428pcs
- CTN Size: 76*60.5*66cm



NO:2007



Key Feature:

1. PP material of back and seat.
2. Modern and simple, seat can be turned over, armrests optional, can be stacked together.
3. Dark grey plastic spraying tube frame.

- 20' GP: 254 pcs
- 40' HQ: 590 pcs
- Product Size: 65.5*62.5*88cm
- CTN SIZE: 61*61*60cm



BACK



SEAT



NO:2008

Key Feature:

1. PP back and fabric seat.
2. Simple mechanism, can be easily lifted up and down.

- 20' GP: 325 pcs
- 40' HQ: 755 pcs
- Product Size:63*47*81.5-90cm
- CTN SIZE: 62*23*60cm



NO:2009



Key Feature:

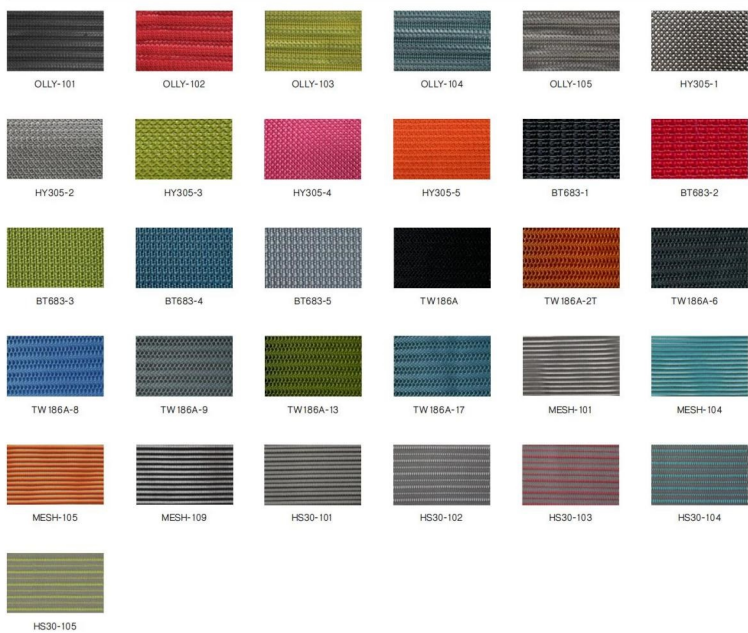
1. PP back and fabric seat.
2. Simple mechanism, can be easily lifted up and down.

- 20' GP: 325 pcs
- 40' HQ: 755 pcs
- Product Size:63*47*81.5-90cm
- CTN SIZE: 62*23*60cm

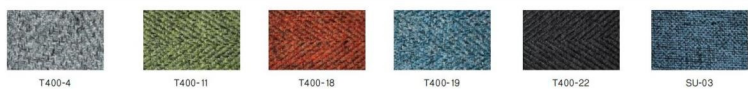
BACK



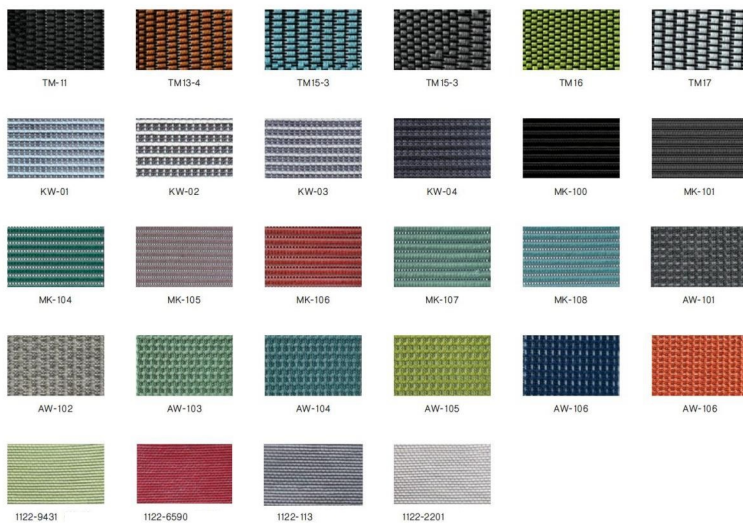
BACK MESH



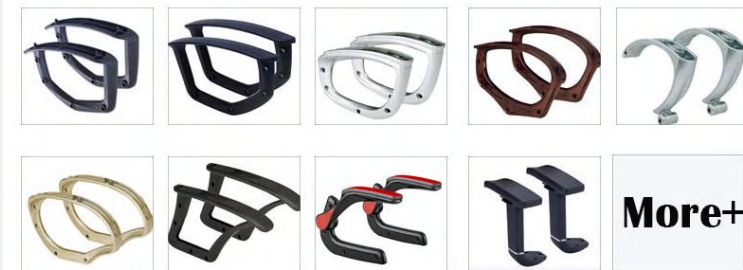
SEAT FABRIC



ALL MESH



Chair Armrest Option



Chair Base Option

