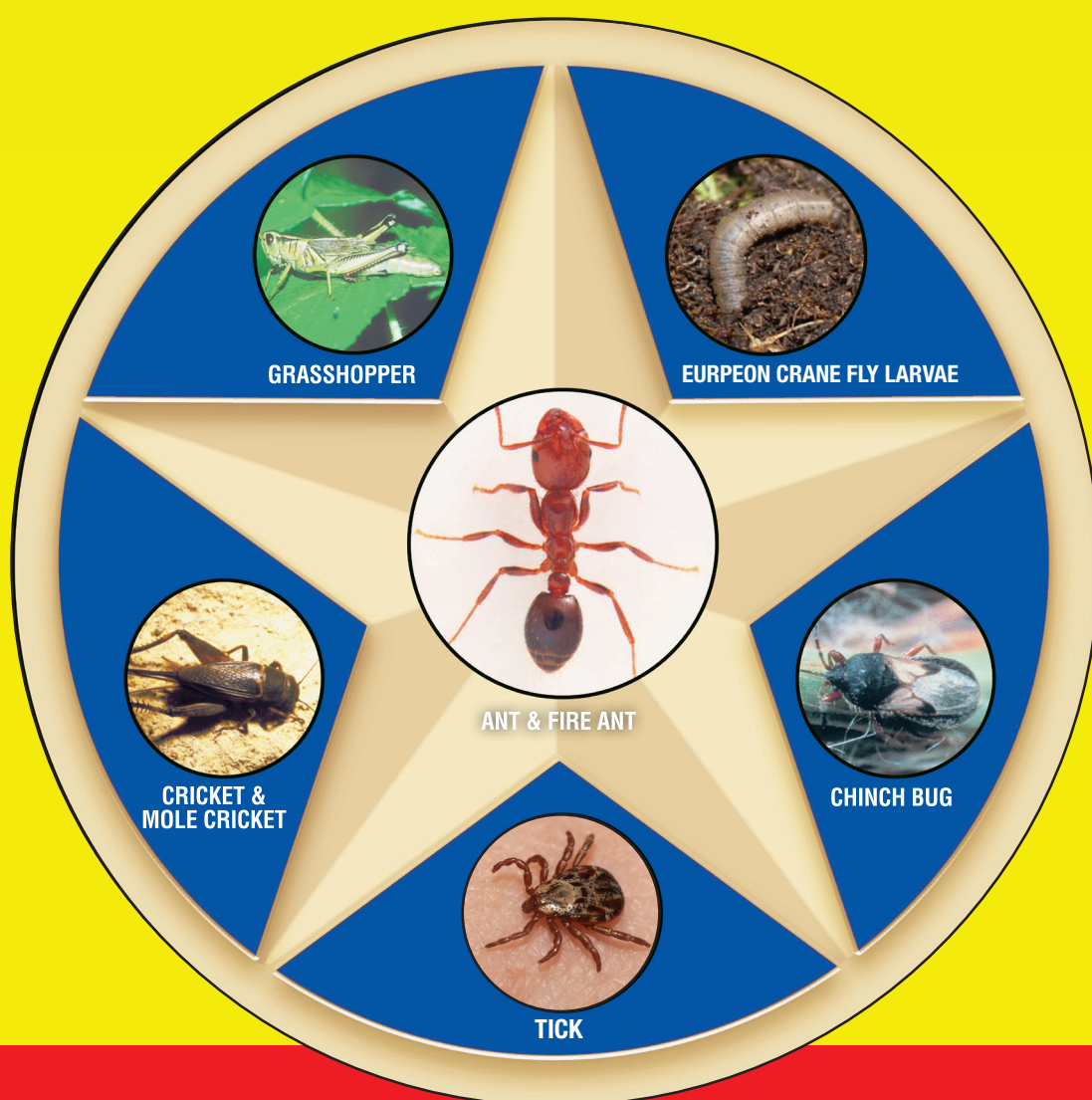


# Hi-Yield®

## Turf Ranger II Granular Insecticide

Hi-Yield® Turf Ranger II Granular Insecticide

Hi-Yield® Turf Ranger II Granular Insecticide



FOR RESIDENTIAL LAWNS, LANDSCAPED AREAS, ORNAMENTAL & FLOWER GARDENS AND PERIMETERS

- Use In lawns, flowers, shrubs & ornamental plant beds
- Controls chinch bugs, sod webworms, fleas, ticks, and other lawn pests listed on the back • Kills mole crickets
- Starts to work immediately after watering in or irrigating
- Treats up to 10,000 sq. ft. for insect control

ACTIVE INGREDIENTS:	By Wt.
Zeta-Cypermethrin*	0.029%
Bifenthrin**	0.115%
OTHER INGREDIENTS:	99.856%
TOTAL:	100.0%

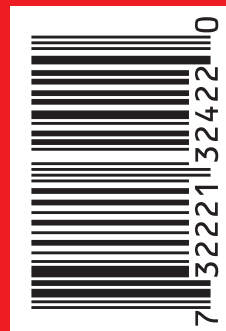
\* *Cis/trans* isomer ratio: Max 75% (±) *cis* and Min. 25% (±) *trans*  
 \*\* *Cis* isomers 97% minimum; *trans* isomers 3% maximum.

KEEP OUT OF REACH OF CHILDREN  
**CAUTION**  
 See Back Panel For Additional  
 Precautionary Statements.

NET WEIGHT 10 LBS. (4.53 KG)

32422

Hi-Yield® Turf Ranger II Granular Insecticide



KEEP OUT OF REACH OF CHILDREN

# Hi-Yield®

## Turf Ranger II Granular Insecticide

### FIRST AID

<b>If in Eyes</b>	<ul style="list-style-type: none"> <li>Hold eye open and rinse slowly and gently with water for 15-20 minutes.</li> <li>Remove contact lenses, if present, after the first 5 minutes, then continue rinsing eye.</li> <li>Call a poison control center or doctor for treatment advice.</li> </ul>
<b>If Swallowed</b>	<ul style="list-style-type: none"> <li>Call poison control center or doctor immediately for treatment advice.</li> <li>Have person sip a glass of water if able to swallow.</li> <li>Do not induce vomiting unless told to do so by the poison control center or doctor.</li> <li>Do not give anything by mouth to an unconscious person.</li> </ul>

### HOTLINE NUMBER

Have the product container or label with you when calling a poison control center or doctor, or going for treatment. You may also contact 1-(800) 331-3148 for Emergency Assistance.

### NOTE TO PHYSICIAN

This product is a pyrethroid. If large amounts have been ingested, the stomach and intestine should be evacuated. Treatment is symptomatic and supportive. Digestible fats, oils, or alcohol may increase absorption and so should be avoided.

### PRECAUTIONARY STATEMENTS HAZARDS TO HUMANS AND DOMESTIC ANIMALS

**CAUTION:** Causes moderate eye irritation. Harmful if swallowed. Avoid contact with eyes or clothing. Prolonged or frequently repeated skin contact may cause allergic reactions in some individuals. Wear long-sleeved shirt and long pants, socks, shoes and gloves. Wash thoroughly with soap and water after handling and before eating, drinking, chewing gum, using tobacco or using the toilet.

### ENVIRONMENTAL HAZARDS

This pesticide is extremely toxic to fish, aquatic invertebrates, oysters and shrimp. To protect the environment, do not allow pesticide to enter or run off into storm drains, drainage ditches, gutters or surface waters. Applying this product in calm weather when rain is not predicted for the next 24 hours will help to ensure that wind or rain does not blow or wash pesticide off the treatment area. Sweeping any product that lands on a driveway, sidewalk, or street, back onto the treated area of the lawn or garden will help to prevent run off to water bodies or drainage systems.

**Hi-YIELD® Turf Ranger II Granular Insecticide** is designed for use as a ready-to-use granular insecticide to control listed surface feeding insects in home lawns, landscaped areas, ornamental & flower gardens and home perimeters. The dual active ingredients in **Hi-YIELD® Turf Ranger II Granular Insecticide** have sufficient knockdown and residual activity to provide remedial and residual control of surface feeding pests. Please read the following "Directions for Use" carefully and fully before applying this product.

### DIRECTIONS FOR USE

It is a violation of Federal Law to use this product in a manner inconsistent with its labeling.

#### RESTRICTIONS:

Apply this product directly to the lawn or garden area. Water treated area as directed on this label. Do not water to the point of run-off.

Do not make applications during rain.

Repeat application is necessary only if there are signs of renewed insect activity.

Do not allow people or pets to enter the treated area until all dusts have settled, watering-in is complete, and the treated area has dried.

Do not apply more than 174 lbs of product (equivalent to 0.2 lbs of active ingredient bifenthrin) per acre per year for outdoor applications.

**In New York State, this product may NOT be applied to any grass or turf area (lawns within 100 feet of a water body (lake, pond, river, stream, wetland, or drainage ditch)) In New York State, do make a single repeat application of this product if there are signs of renewed insect activity, but not sooner than two weeks after the first application.**

Broadcast **Hi-YIELD® Turf Ranger II Granular Insecticide** to provide uniform coverage over the treatment area. Locate the pest to be controlled in the following table and follow the listed application rates to provide excellent control under typical conditions. When treating for multiple pests, apply the higher of the listed rates. Retreatment may be necessary to achieve and/or maintain control during periods of high pest pressure. Repeat application are limited to no more than once per 7 days. Do not to exceed 4 lb per 1,000 ft<sup>2</sup> per application and do not apply more than 17.5 lbs per 1,000 ft<sup>2</sup> per year.

Apply this product uniformly to residential lawns, under shrubbery and other ornamental recreational grassy areas. Treat when insects first appear. Immediately after application, water the lawn thoroughly with half an inch of water. Retreat only as necessary to maintain insect control.

Pests	Dosage of Product
Armyworms (including Lawn Armyworm, Fall Armyworm), Crickets (including House Cricket, Common Shorttailed Cricket, Indies Short-tailed Cricket, Arizona Cricket, Tropical Cricket, Variable Field Cricket, Fall Field Cricket, Southeastern Field Cricket, Texas Field Cricket, Spring Field Cricket, Northern Wood Cricket, Western Striped Cricket, Eastern Striped Cricket, Sand Field Cricket, Vocal Field Cricket, Southern Wood Cricket), Cutworms (including Black Cutworm, Bronzed Cutworm, Granulate Cutworm, Variegated Cutworm), Dichondra Flea Beetle, Essex Skipper, Fiery Skipper, Frit fly, Grasshoppers, Greenbug, Ladybeetles (including Convergent Ladybeetle, Seven-spotted Ladybeetle, Two-spotted Ladybeetle, Thirteen-spotted Ladybeetle, Twice-stabbed Ladybeetle, Asian Ladybeetle, Mealybug Ladybird), Scales (including Ground Pearl), Seed Maggots, Silverfish, Springtails, Striped Grassworm, Two-lined Spittle Bugs, Webworms (including Sod Webworm, Grass Webworm, Tropical Sod Webworm), Wireworms	1 to 2 lbs per 1,000 ft <sup>2</sup>
Billbugs (including Bluegrass Billbug, Hunting Billbug), Black Turfgrass Ataenius (Adult), Boxelder Bugs, Bristletail, Caterpillars (including Lucerne Moth), Chiggers, Earwigs, European Crane Fly Larvae, Ground Beetle, Leafhoppers, Mealybugs, Spiders (including Brown Recluse Spider, Green Lynx Spider, Marbled Cellar Spider, Longbodied Cellar Spider, Shortbodied Cellar Spider, Thinlegged Wolf Spider, Burrowing Wolf Spider, Pirate Wolf Spider), Weevils (including Annual Bluegrass Weevils (Hyperodes), Vegetable Weevils)	2 to 4 lbs per 1,000 ft <sup>2</sup>
Ants (except Carpenter and Pharaoh ants), Bermudagrass Mites, Chinch Bugs, Clover Mites, European Chafer, Fleas (larvae & adults), Imported Fire Ants (foraging adults; for mound treatments, see directions below), Millipedes, Mole Crickets (including Tawny Mole Cricket, Southern Mole Cricket, Short-Winged Mole Cricket), Scarab Beetles (including Japanese Beetle, Green June Beetle, May Beetle), Scorpions (including Arizona Stripetail Scorpion, Southern Unstriped Scorpion, Lesser Stripetail Scorpion, Yellow Ground Scorpion, California Common Scorpion, Northern Scorpion, Eastern Sand Scorpion), Spider Mites, Ticks (including American Dog Tick, Brown Dog Tick, and ticks that may transmit Lyme Disease), Pillbugs, Sowbugs	4 lbs per 1,000 ft <sup>2</sup>

**APPLICATION EQUIPMENT:** **Hi-YIELD® Turf Ranger II Granular Insecticide** is a granular formulation. Apply with a fertilizer spreader or equivalent equipment as uniformly as possible. The following table lists application equipment and recommended settings for that equipment for the application of **Hi-YIELD® Turf Ranger II Granular Insecticide**.

Spreader	Spreader Settings Lbs. of product per 1,000 sq. ft.			
	1 lb	2 lb	3 lb	4 lb
Scotts®/Republic Accugreen (Drop)	1	2 ¼	3 ¼	4 ¼
Scotts®/Republic Speedy Green (Broadcast)	1	2 ½	3	3 ¾
ferti•lome®/Earthway Ev-N-Spred (Broadcast)	11	12	13	14

**NOTE:** Spreader settings given are approximate and variation can occur between identical models. User should calibrate spreader by accurately weighing a few pounds into spreader and applying to a measured area. Then, adjust spreader setting if necessary to ensure correct rate of application.

For optimum control of specified pests, follow recommended procedures outlined below:

**Ants:** To control ant mounds (excluding fire ant mounds – see specific use directions for fire ant mounds), locate and treat nest first (if possible). Apply 2 tablespoons of product to cover the nest, then gently sprinkle water to moisten the treatment area. In addition to treating ant nests or mounds, treat around entry points of buildings and the soil surface along the perimeter of the building. See below for directions for use for perimeter treatment.

**Fire Ant Mounds:** Treat ant mounds by applying 1/2 cup of **Hi-YIELD® Turf Ranger II Granular Insecticide** per mound. Water with sufficient force to break its apex and allow the insecticide to flow into the ant tunnels, but not sufficient to significantly damage the mound that may lead to relocation. For best results, apply in cool weather (65 to 80°F) or in early morning or late evening hours. Treat new mounds as they appear. Food utensils such as teaspoons and measuring cups should not be used for food purposes after use with insecticide. For optimum control or for heavily infested areas, combine both mound and broadcast treatments.

**Armyworms, Cutworms, and Sod Webworms:** Thoroughly water the treated area immediately after application. If Lawn Moths (Sod Webworms Adults) are noticed in large numbers at dusk, or at first sign of damage to lawn, treat entire lawn evenly.

**Annual Bluegrass Weevil (Hyperodes) adults:** Time application for when adult weevils leave their overwintering sites and move into grass areas. This movement generally begins when *Forsythia* is in full bloom and concludes when flowering dogwood (*Cornus florida*) is in full bloom.

**Billbug adults:** Apply when adult billbugs are first observed during April and May.

**Black Turfgrass Ataenius adults:** Apply during May and July to control the first and second generation of black turfgrass ataenius adults.

**Chinch Bugs:** Thoroughly water the treated area immediately after application. In temperate regions, spring applications will provide control of over-wintered chinch bugs. A second application may be necessary in 6 weeks if insect activity continues.

**European crane fly larvae (Leather jackets):** Apply in early April when insects are young.

**Flea larvae:** Treat areas where animals frequent and any shady areas nearby. Thoroughly water the treated area immediately after application.

**Mole Crickets:** Apply as late in the day as possible to moist soil (irrigate before application if necessary), and thoroughly water in immediately after treatment. Treat grass areas that receive pressure from adult mole crickets in the spring immediately prior to peak egg hatch when young nymphs are located near the soil surface. Repeat applications to control larger, more damaging nymphs later in the year.

**Scorpions:** Treat at dusk to prevent outdoor scorpions from entering the building. Treat areas where scorpions reside hidden during the day such as in cracks and voids. Remove trash, debris, or firewood that scorpions may use as resting sites prior to treatment.

**Ticks (including ticks that transmit Lyme disease and Rocky Mountain Spotted fever):** Treat once a month as directed above when pests first appear in late spring (May-June) and continue a regular treatment program until late summer (September-October). Treat the entire area where exposure to ticks may occur, including areas with dense ground cover or heavy leaf litter. Re-treat if ticks are reintroduced from surrounding areas on host animals. Do not allow public use of treated areas during application.

**PERIMETER TREATMENT:** To help prevent infestation of buildings, evenly apply a 2 foot wide band around and adjacent to the building where pests are active and may find entrance. Treat at a rate of 2 to 4 pounds per 1,000 sq. ft.

### STORAGE AND DISPOSAL

Do not contaminate water, food or feed by storage or disposal.

**PESTICIDE STORAGE:** Store in a cool, dry area. Always store pesticides in the original container. Store away from food and pet food.

**PESTICIDE DISPOSAL AND CONTAINER HANDLING:** Nonrefillable container. Do not reuse or refill this container.

**If empty:** Place in trash or offer for recycling if available.

**If partly filled:** Call your local solid waste agency for disposal instructions. Never place unused product down any indoor or outdoor drain.

#### Conditions of Sale and Limitation of Warranty and Liability:

Notice: Read the entire Directions for Use and Conditions of Sale and Limitation of Warranty and Liability before buying or using this product. If the terms are not acceptable, return the product at once, unopened, and the purchase price will be refunded.

The Directions for Use of this product must be followed carefully. It is impossible to eliminate all risks inherently associated with the use of this product. Crop injury, ineffectiveness, or other unintended consequences may result because of such factors as manner of use or application, weather or crop conditions beyond the control of VPG, Inc. or Seller. All such risks shall be assumed by Buyer and User, and, to the extent permitted by applicable law, Buyer and User agree to hold VPG, Inc. and Seller harmless for any claims relating to such factors.

Seller warrants that this product conforms to the chemical description on the label and is reasonably fit for the purposes stated on the Directions for Use when used in accordance with the directions under normal conditions of use. TO THE EXTENT PERMITTED BY APPLICABLE LAW, VPG, Inc. MAKES NO WARRANTIES OF MERCHANTABILITY OR OF FITNESS FOR A PARTICULAR PURPOSE, NOR ANY OTHER EXPRESS OR IMPLIED WARRANTIES WITH RESPECT TO THE SELECTION, PURCHASE, OR USE OF THIS PRODUCT. Any warranties, express or implied, having been made are inapplicable if this product has been used contrary to label instructions, or under abnormal conditions, or under conditions not reasonably foreseeable to (or beyond the control of) seller or VPG, Inc., and, to the extent permitted by applicable law, buyer assumes the risk of any such use.

To the extent permitted by applicable law, VPG, Inc. or seller shall not be liable for any incidental, consequential or special damages resulting from the use or handling of this product. TO THE EXTENT PERMITTED BY APPLICABLE LAW, THE EXCLUSIVE REMEDY OF THE USER OR BUYER, AND THE EXCLUSIVE LIABILITY OF VPG, Inc. AND SELLER FOR ANY AND ALL CLAIMS, LOSSES, INJURIES OR DAMAGES (INCLUDING CLAIMS BASED ON BREACH OF WARRANTY, CONTRACT, NEGLIGENCE, TORT, STRICT LIABILITY OR OTHERWISE) RESULTING FROM THE USE OR HANDLING OF THIS PRODUCT, SHALL BE THE RETURN OF THE PURCHASE PRICE OF THE PRODUCT OR, AT THE ELECTION OF VPG, Inc. OR SELLER, THE REPLACEMENT OF THE PRODUCT.

This Conditions of Sale and Limitation of Warranty and Liability may not be amended by any oral or written agreement.

Manufactured For:



230 FM 87 • BONHAM, TX 75418

EPA Reg No. 279-3636-7401

EPA Est. No. 7401-TX-01

Product Questions? 855-270-4776

32422-1118-TP

