



# STRONG INSTRUCTIONS



## WHATSAPP



## FACEBOOK MESSENGER



## LIVE CHAT SUPPORT

**IF YOU ARE MISSING ANY PARTS OF THE PRODUCT OR HAVING TROUBLES IN THE INSTALLATION PROCESS, PLEASE DO NOT RETURN THE PRODUCT BEFORE TEXTING US VIA THE QR CODES BESIDE. OUR LIVE AGENTS WILL BE HAPPY TO ASSIST YOU.**

You can also e-mail us for any other questions or further assistance.

[support@erkulauto.com](mailto:support@erkulauto.com)



**For an easy and smooth  
installation process**

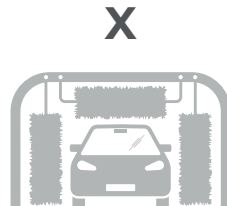
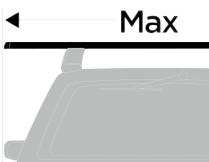
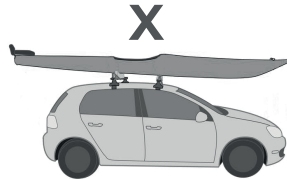
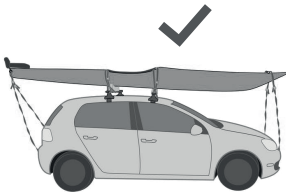
**Please watch our installation  
video using the QR code  
below**



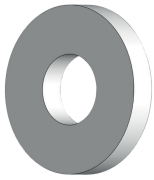


## ATTENTION

- Don't cut the bars or scrape the plastic headers! These crossbars are vehicle specific and bar lengths vary by model.
- If one bar is longer than the other, the front of your vehicle is wider than the back.
- In this case, install the longer bar on the front and the shorter bar on the rear.
- If you can't fit it, there may be a point you missed.
- If you cut the bars and don't insert cross bars fully into the mount, the bars carrying capacity will decrease. In this case, Erkul Auto will not accept responsibility.
- If you need assistance please do not hesitate to contact us via your shopping channel.



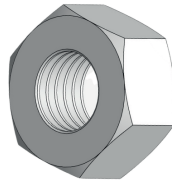
# PACKAGE INCLUDED



Washer  
x8



M6  
x8



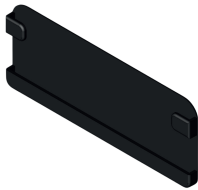
Nut  
x8



x1



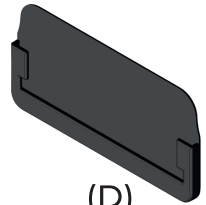
(A)  
x4



(B)  
x4



(C)  
x4



(D)  
x4



(F)  
x4



x2

# ASSEMBLY INSTRUCTION

1.1



Insert B plastic part into A metal part.

1.2



Insert D plastic part into C metal part.

2.1



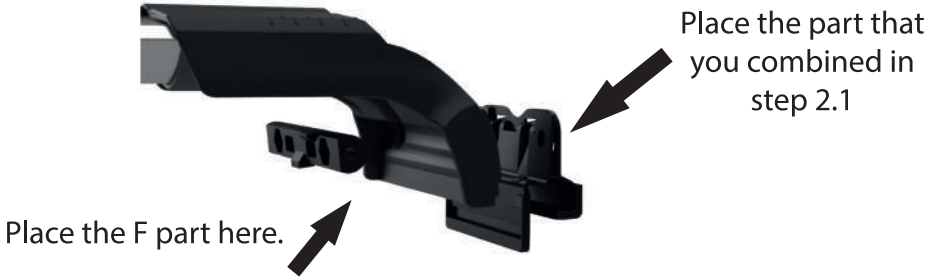
Combine those parts together as shown in the picture.

3.



Place the washers into M6 screws.

4.1



4.2



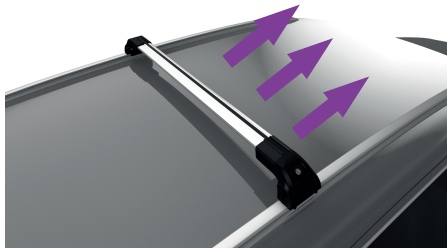
It should look like that.

5



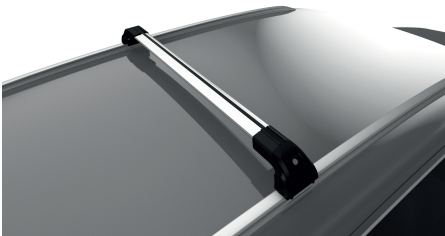
Clean and dry vehicle's roof rail.

6.a



Thick side of the bar should face the front of the vehicle.

6.b



Refer to the individual brackets, marked L for the left and R for the right.

6.c



Place crossbars on roof rails

6.d



Recommended distance between bars is 27 inches (70 cm). Don't try to increase that distance while carrying long products.

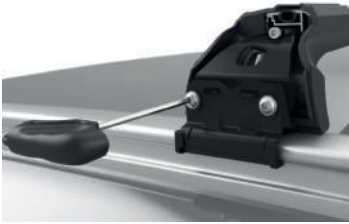
6.e



Rubber side has to face up.



7.a



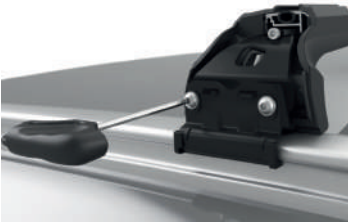
Tighten the left and right screws respectively to %50.

7.b



For the opposite side, tighten the left and right screws respectively to the %50, too.

7.c



Come back to the first side and tighten the left and right screws to %100.



7.d



Tighten the horizontal screw fully.

7.e



For the opposite side, tighten the left and right screws to %100, too.



7.f



Tighten the horizontal screw fully. Repeat the whole 'Step 7' to the other bar, too.

8.



Insert the plastic cover and lock it.

9.



Repeat the step 8 for other 3 mounts.

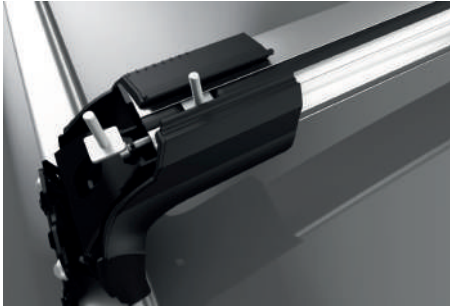
10.



To check the fitment, firmly grasp crossbars and attempt to move forward and backwards, side to side.

# i Flexible RUBBER

for TRIM FREE T-TRACK MOUNT INSTALLATION



Thanks to flexible rubber to install your carriers you don't need to trim the rubber.



Note: T-Tracks are not included to the package.

## WHATSAPP



## FACEBOOK MESSANGER



## LIVE CHAT SUPPORT

**IF YOU ARE MISSING ANY PARTS OF THE PRODUCT OR HAVING TROUBLES IN THE INSTALLATION PROCESS, PLEASE DO NOT RETURN THE PRODUCT BEFORE TEXTING US VIA THE QR CODES BESIDE. OUR LIVE AGENTS WILL BE HAPPY TO ASSIST YOU.**

You can also e-mail us for any other questions or further assistance.

[support@erkulauto.com](mailto:support@erkulauto.com)

# SAFETY PRECAUTIONS!

1. Confirm that you have all required parts by checking the assembly instructions.
2. Regularly check for worn-out or damaged parts and replace them.
3. Regularly clean and maintain the load bars, especially during the winter.
4. Store all loose parts in a safe place when the product is removed.
5. Review and follow the assembly instructions and the suggestion list. Complete each step in the order recommended.
6. With the load bars installed, some sunroofs and/or radio antennas may not be operable, or some of their functions may be limited.
7. Except where otherwise stated in the mounting instructions, the load bars can be installed on cars with sunroofs.
8. Keep a minimum gap of 27 inches (700 mm) between the load bars.
9. Keep a minimum distance of 23 inches (600mm) between the load bars while carrying heavy loads.
10. Ensure that the load bars are securely mounted on the roof each time they are installed. To check the security of the bars, firmly grasp them and attempt to move them forward and backwards, as well as side to side. If any part of the unit moves, the mounting screws must be tightened to prevent movement. Check the security of the load bars on a regular basis.
11. Do not exceed the maximum load limit of 165lbs (75kg). This limit may be less depending on the maximum roof load recommended by the vehicle manufacturer. Always defer to the lowest maximum suggested roof load.
12. The maximum roof load is equal to the weight of the load bars plus any installed carrier accessories plus the weight of the load itself.
13. Any items carried on the load bars **MUST** be securely fastened. The use of elastic bungees is not safe.

# SAFETY PRECAUTIONS!

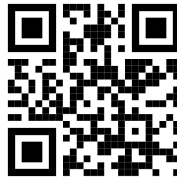
14. Surfboards and other long items must be fastened at both the front and back of the vehicle when being transported.
15. When transporting multiple surfboards, stack them one on top of the other rather than next to each other.
16. The load must not be wider than the load bars width, and it must be equally distributed across the bars with the lowest possible center of gravity.
17. Prior to loading, all loose or removable pieces of the load, such as bicycle child seats, tire pumps, surfboard fins, etc. should be removed.
18. Ski's must be installed with the ski tips facing the rear of the vehicle when being transported.
19. Check the load's initial security after a short distance and at regular intervals on longer drives, at highway speeds, or on bumpy roads. When required, tighten the load's fastening straps.
20. When carrying taller items such as upright bicycles, the total height of the vehicle rises significantly. Use caution when clearance is low or when entering parking structures.
21. When a load is carried on the roof, the vehicle's handling and braking behavior can change, and it is more susceptible to cross-winds.
22. The vehicle's speed must always be adjusted to the load being transported as well as current driving conditions, such as road type, road quality, wind conditions, traffic intensity, and relevant speed limits, but speeds must never exceed 80MPH (130 km/h). Speed limits and other traffic restrictions must always be followed.
23. Drive slowly over speed bumps, with a top speed of 6 MPH (10 km/h).
24. While in use, lock any products which are equipped with locks.
25. This product may not be altered in any way.
26. The manufacturer will not be held liable for human or animal injury, property damage, or financial loss resulting from improper installation or use of the device. Always double-check that the load is properly secured



# STRONG



Use the QR code below to see the instruction digitally.



Deutsche - Español - Français - Русский - Türkçe - عربي

support@erkulauto.com