



ERKUL[®]

Products & Quality

SKI CARRIER INSTRUCTIONS



WHATSAPP



**FACEBOOK
MESSENGER**



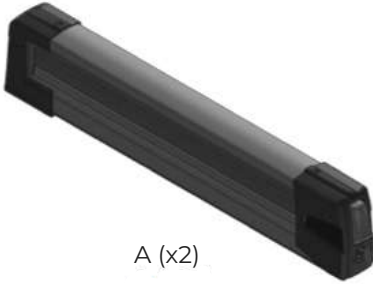
LIVE CHAT SUPPORT

IF YOU ARE MISSING ANY PARTS OF THE PRODUCT OR HAVING TROUBLES IN THE INSTALLATION PROCESS, PLEASE DO NOT RETURN THE PRODUCT BEFORE TEXTING US VIA THE QR CODES BESIDE. OUR LIVE AGENTS WILL BE HAPPY TO ASSIST YOU.

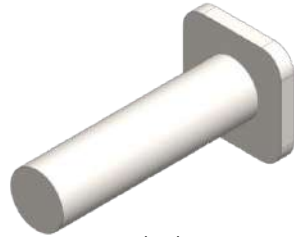
You can also e-mail us for any other questions or further assistance.

support@erkulauto.com

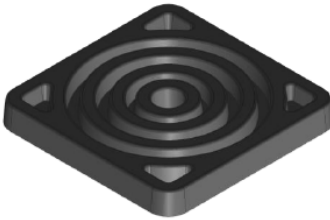
PACKAGE CONTENT



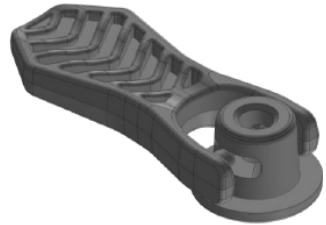
A (x2)



B (x4)



C (x4)



D (x4)



E



F (x1)



ASSEMBLY INSTRUCTIONS

1



Tighten T screws into the canal over (B) crossbar.

2



Install C parts to the t-bolts.

3



Insert the ski carrier into t-screws through the holes in the bottom of (A).

ASSEMBLY INSTRUCTIONS

4



Press the button to open the cover and remove the lock on the side.

5



Move the slide outwards.

6



Fix D brackets by tightening two screws.

ASSEMBLY INSTRUCTIONS

7



Tighten the both brackets and then lock it by tilting them downwards.

8



Apply the same for the second ski carrier.

9



Load your skis on the slide and push the slide in its place. Be sure that your skis front sides looks at your cars backside.

ASSEMBLY INSTRUCTIONS

10



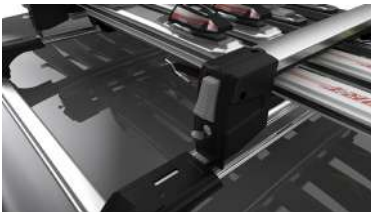
Push the slide all the way through, then push the lock downwards and fix the ski.

11



Close the covers of both carriers.

12



Lock your ski carrier with the key (E).



ERKUL®

Products & Quality

SKI CARRIER ASSEMBLY INSTRUCTIONS



Watch our installation video using the QR code



Deutsche - Español - Français -
Русский - Türkçe - عربي