

GENERAL NOTES, UNLESS OTHERWISE SPECIFIED:  
 NOTES IN BRACKETS [ ] ARE METRIC UNITS  
 SUB-CONTRACTOR TO CERTIFY MATERIAL SPECIFICATIONS

THIS DRAWING IS THE PROPERTY OF KWIK PERFORMANCE, AND IS NOT TO BE USED IN ANY WAY DETRIMENTAL TO ITS INTERESTS. THIS DRAWING IS SUBJECT TO RETURN UPON REQUEST. ALL COPIES OF THIS ELECTRONIC DOCUMENT, WHETHER ELECTRONIC, PRINTED, OR OTHERWISE, ARE UNCONTROLLED DOCUMENTS.

**KWIK PERFORMANCE**

TOLERANCES UNLESS OTHERWISE SPECIFIED:  
 FRACTIONAL: ±1/16 (1.6mm)  
 2 PLACE DECIMAL: ±0.03 (0.8mm)  
 3 PLACE DECIMAL: ±0.010 (0.25mm)  
 ANGULAR: ±1°

TITLE BRACKET ASSEMBLY-ALT/PS P SERIES PUMP	MODEL BBC
DRAWN BY: K WALL	DRAWING DATE: 1/31/2023
PART NUMBER K10636	DRAWING NO. 10636
SCALE: 1:2 ON SIZE C	
SHEET 2 of 6	

# Installation Instructions for K10636

Alternator and power steering pump bracket for BBC engines with P-series pump



**Note:** Leave all fasteners finger tight until step 4

## Kit contents:

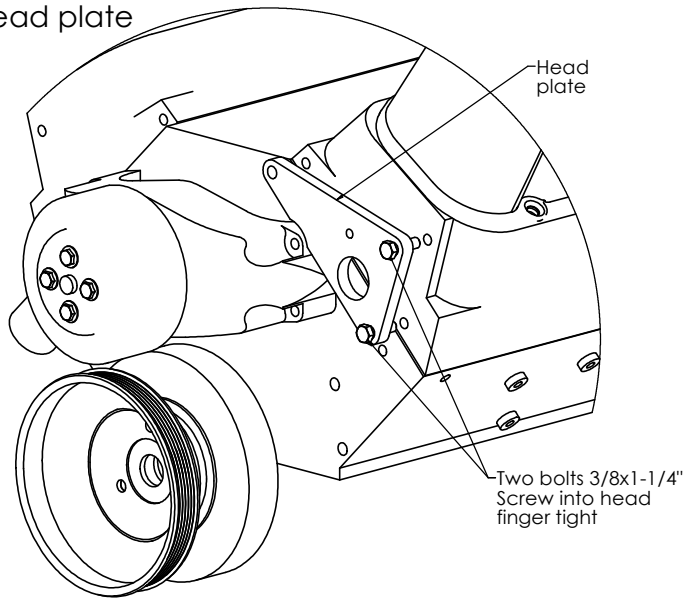
- Mounting plates
- Spacer tubes
- Fasteners
- Idler pulley

## Additional parts required:

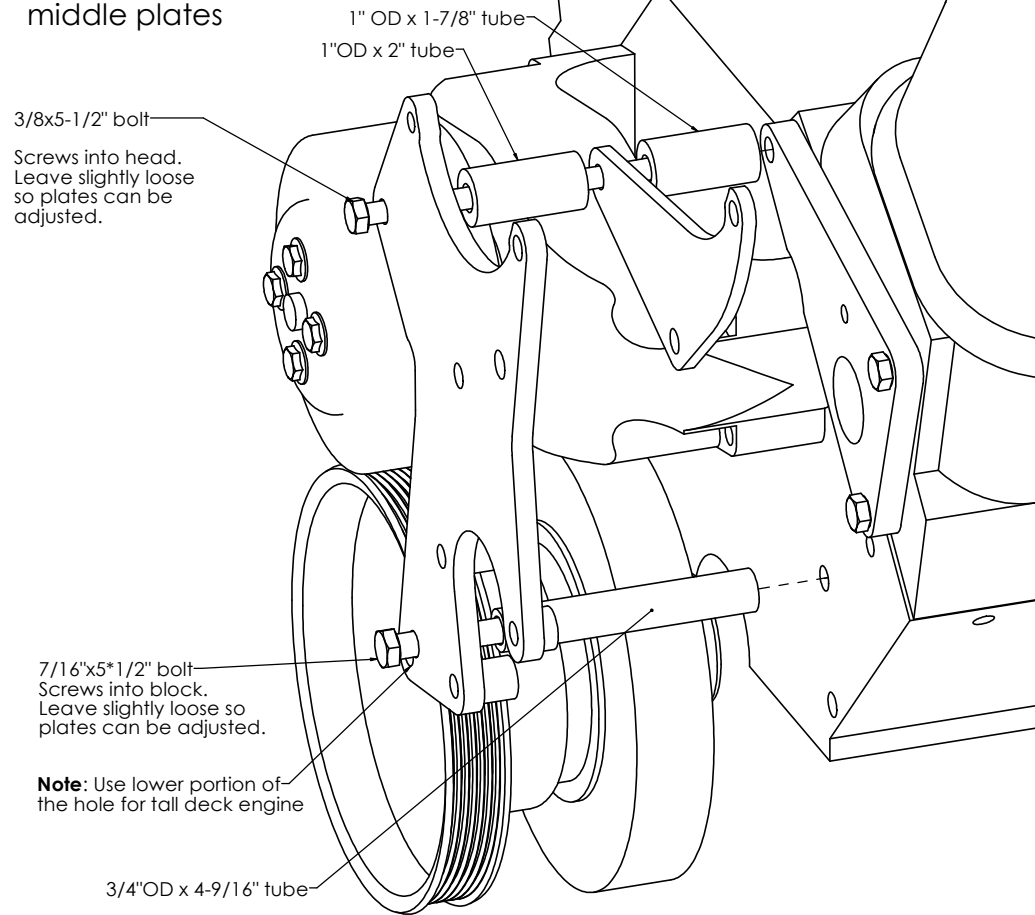
- Alternator
- P-series power steering pump
- Belt. See table below.

Suggested belt length and Gates PN - K10636 Alternator and power steering bracket - Big block Chevy		
Using Kwik Performance AC mini compressor bracket K10273	Using Kwik Performance Sanden 709 AC bracket K10217	Using Kwik Performance AC delete bracket K10241
<b>83" K060824</b>	<b>94" K060935</b>	<b>71.63" K060711</b>

## 1. Install head plate



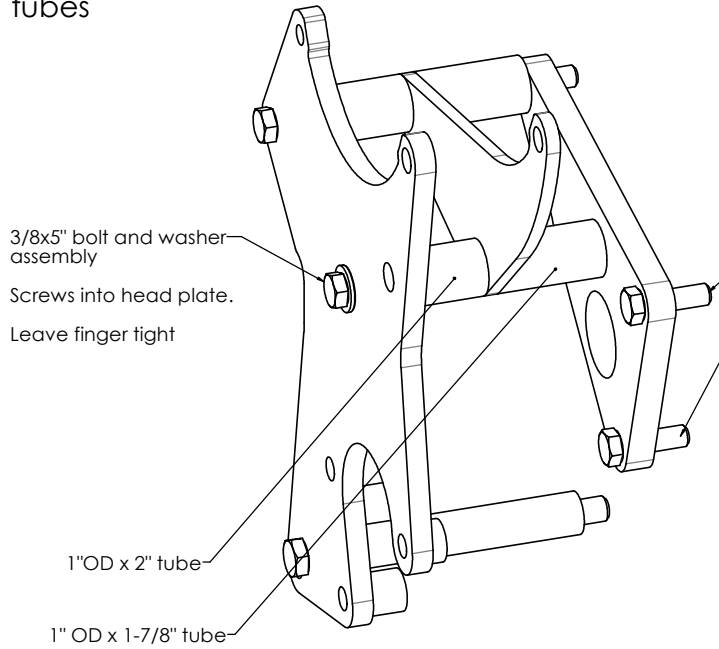
## 2. Install front and middle plates



# Installation Instructions for K10636



### 3. Add remaining two tubes



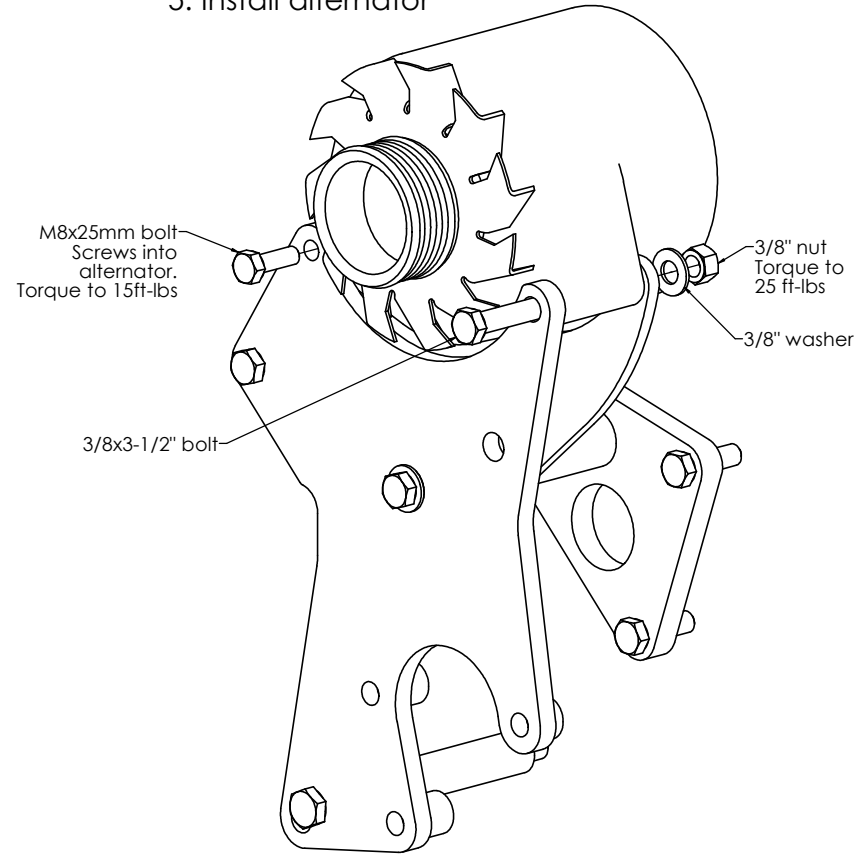
### 4. Tighten bolts

**First:** Tighten these 2 head bolts to 25 ft-lbs

**Second:** Lift up on front plate to square it up with the engine, then tighten the three front plate bolts. Torque to 25 ft-lbs.

**Note:** The first time the 3/8x5" bolt and washer assembly is tightened, it will require extra turns of the bolt to crush the retainer push nut.

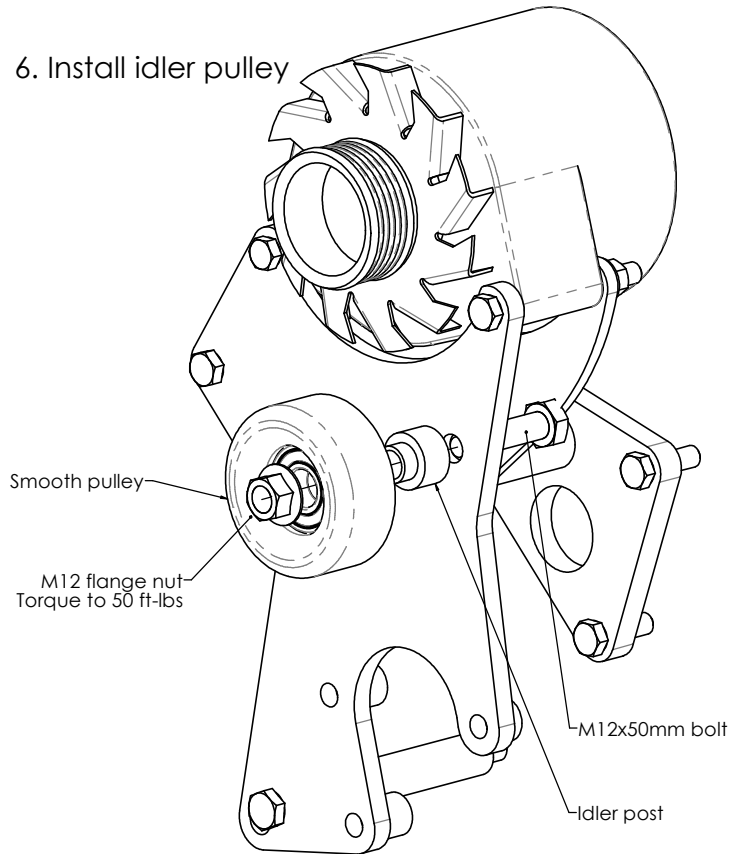
### 5. Install alternator



# Installation Instructions for K10636

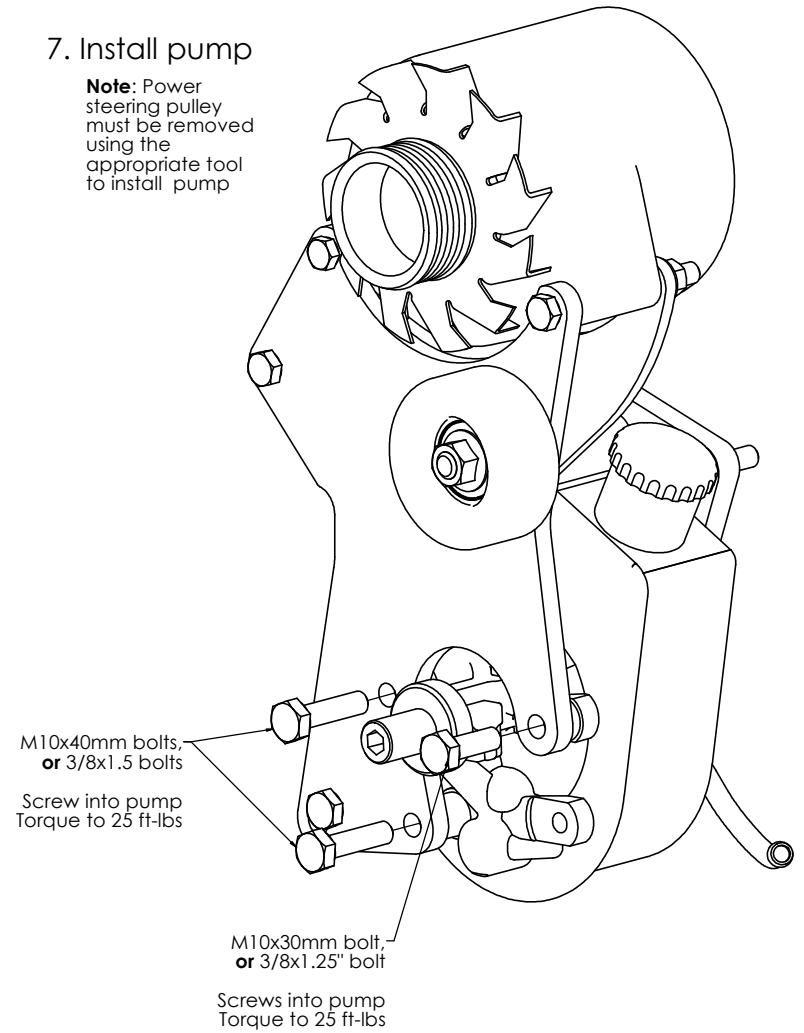


## 6. Install idler pulley



## 7. Install pump

**Note:** Power steering pulley must be removed using the appropriate tool to install pump

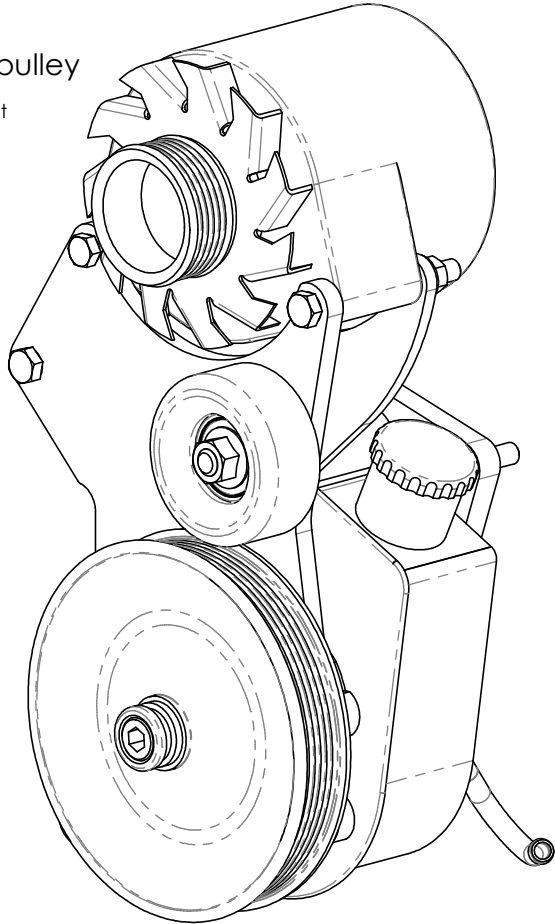


## Installation Instructions for K10636

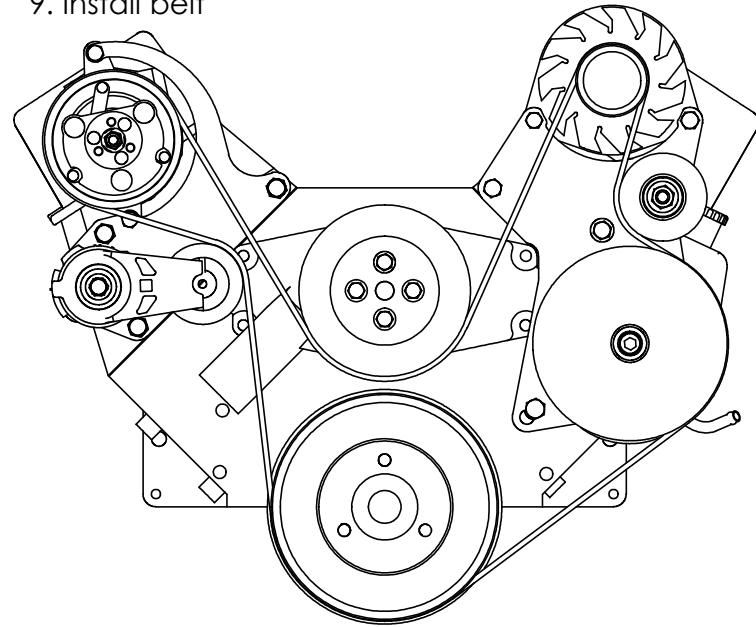


### 8. Install PS pulley

Use the correct  
tool to install.



### 9. Install belt



See table on page 1 for belt length recommendations

**Note:** See AC bracket instructions for belt routing around the compressor.

**Note:** For best performance and longest life, the belt lengths suggested by Kwik Performance are the shortest belt that can be reasonably installed.

We recommend the following procedure:

1. When installing the serpentine belt, place the belt around all pulleys as shown in the diagram except for the water pump pulley.
2. Check to see that the belt is in the correct grooves of the AC compressor.
3. Check to make sure that the belt is seated all the way in the grooves of each grooved pulley.
4. Retract the tensioner all the way and slip the belt onto the water pump pulley.
5. Release the tensioner.