

# Installation Instructions for K10581/K10595

AC & PS Bracket for L8T style  
engines with center water pump



www.kwikperf.com

## 1. Preliminary engine work

### Kit contents:

- Mounting plates
- Spacer tubes
- Fasteners
- Idler pulley
- PS pump
- PS reservoir
- PS hose

### Additional parts required:

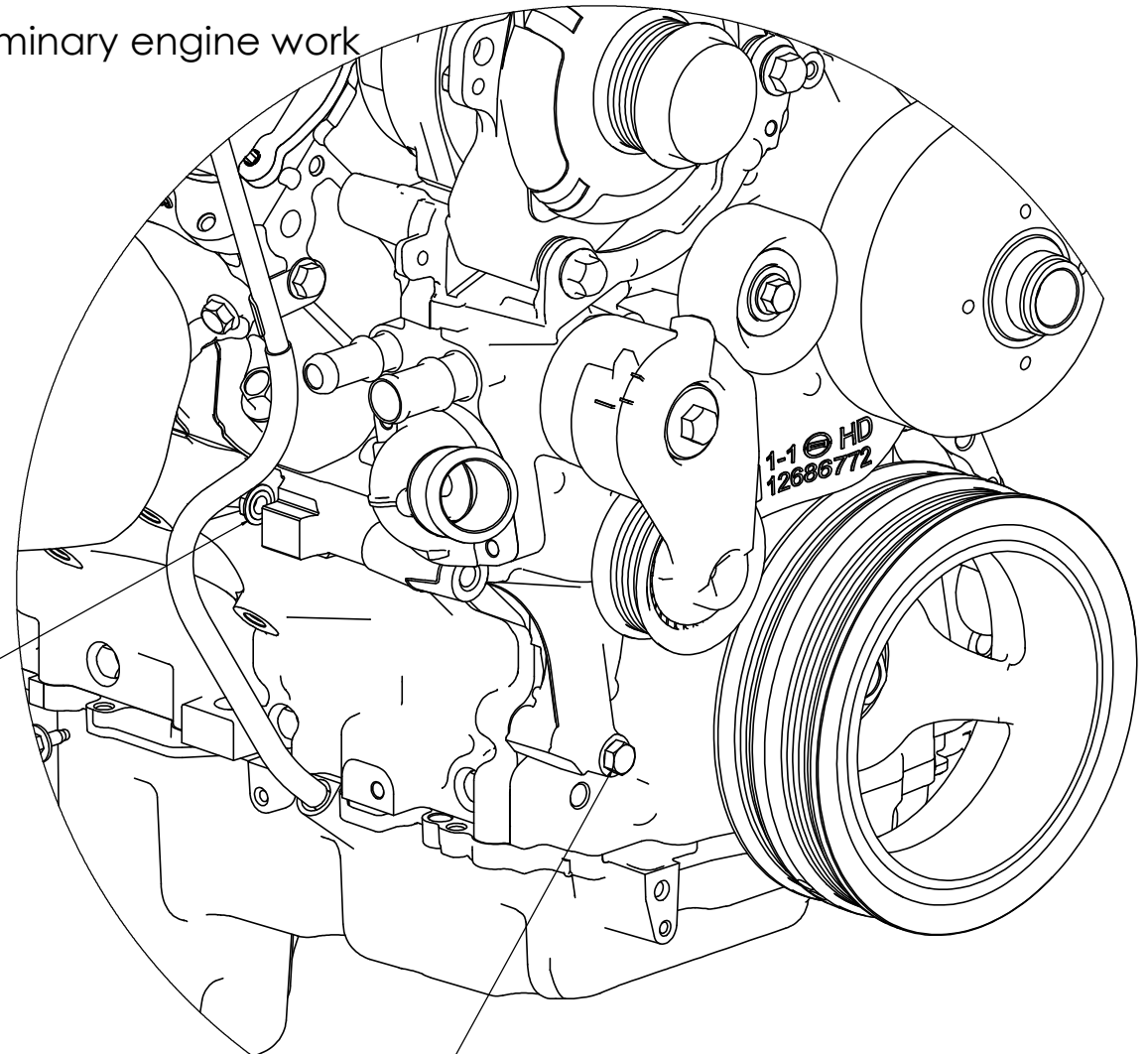
- Belt. Gates K061005 is suggested.
- AC compressor, Sanden "508" style. Typical SD5 Sanden part number is 6629. However, we recommend the SD7 Sanden part number 4665 for smoother operation and less vibration.

After removing the factory AC compressor, reinstall the factory 8mm bolt that holds the water pump and secure with this supplied 8mm nut.

Tighten to 15 ft lbs.

Remove the stud that held the factory AC compressor to the water pump. Install the supplied M8x75mm bolt.

Tighten to 15 ft-lbs



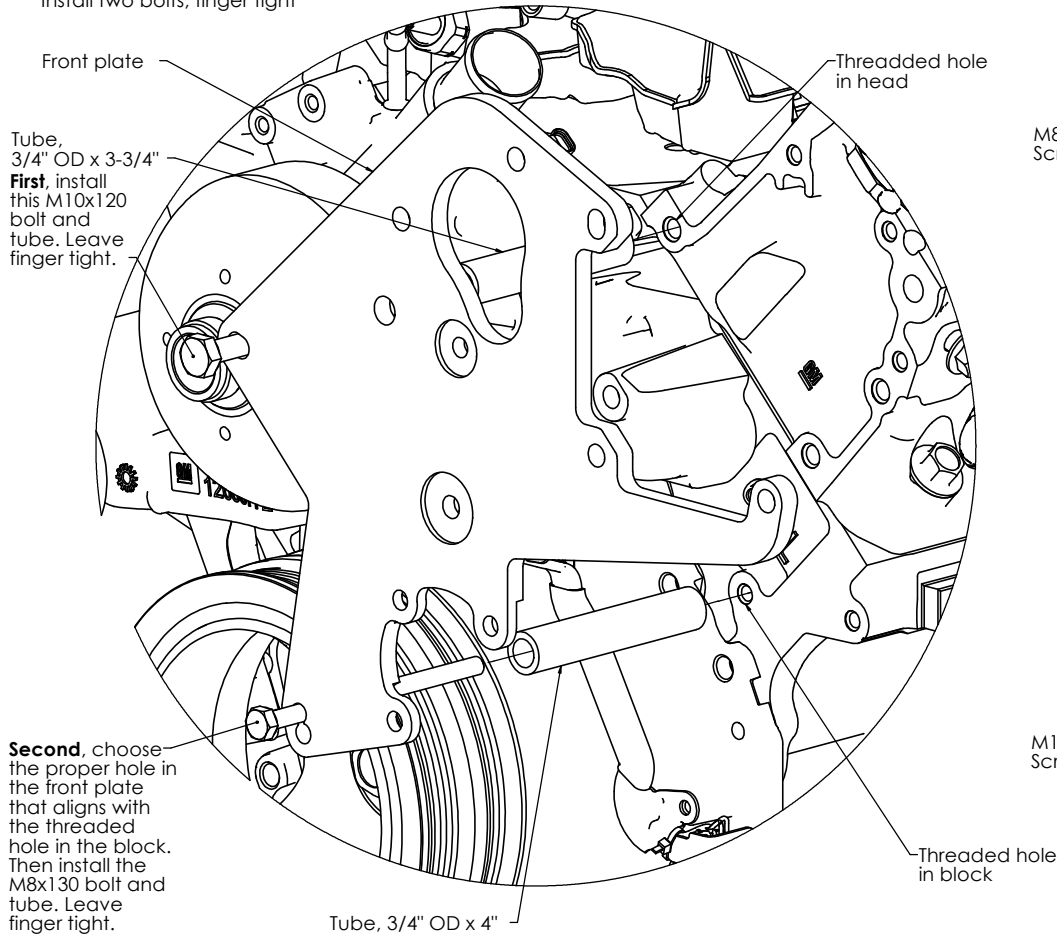
# Installation Instructions for K10595/K10581



www.kwikperf.com

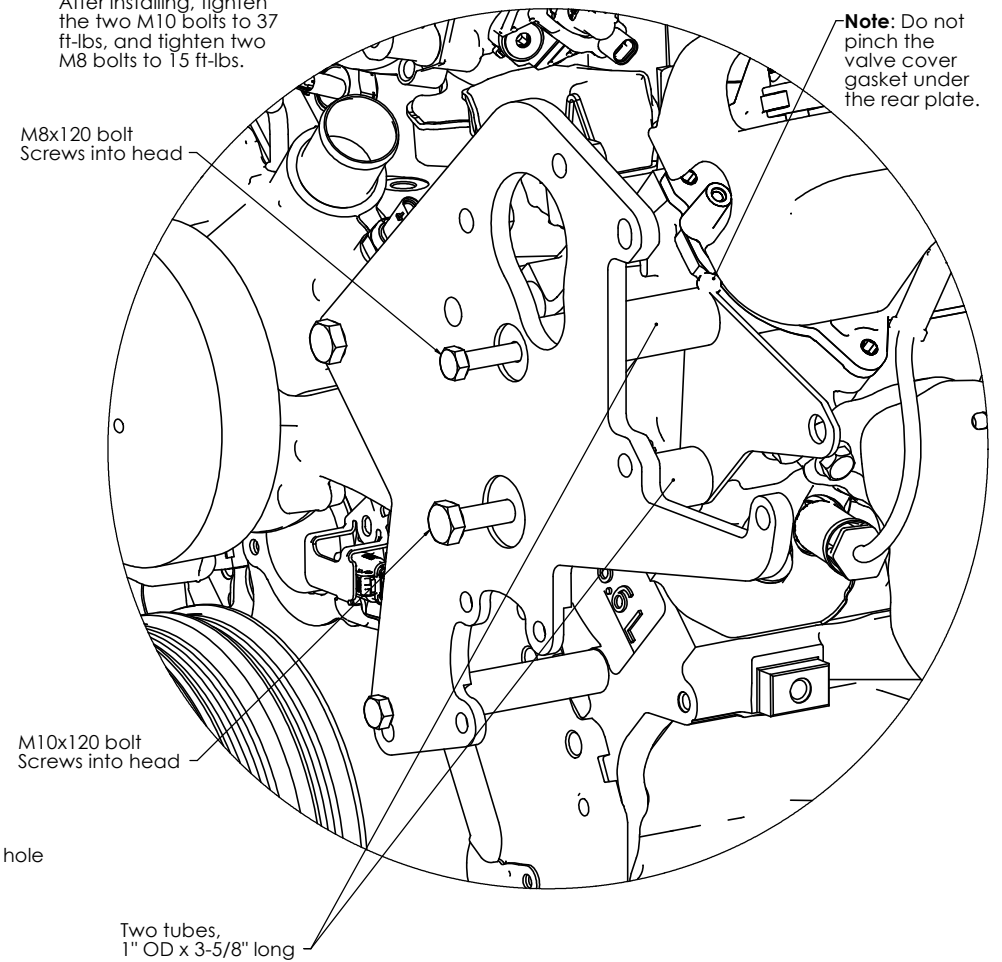
## 2. Install front plate

Install two bolts, finger tight



## 3. Install rear plate

After installing, tighten the two M10 bolts to 37 ft-lbs, and tighten two M8 bolts to 15 ft-lbs.



# Installation Instructions for K10595/K10581



## 4. Install reservoir bracket and pump

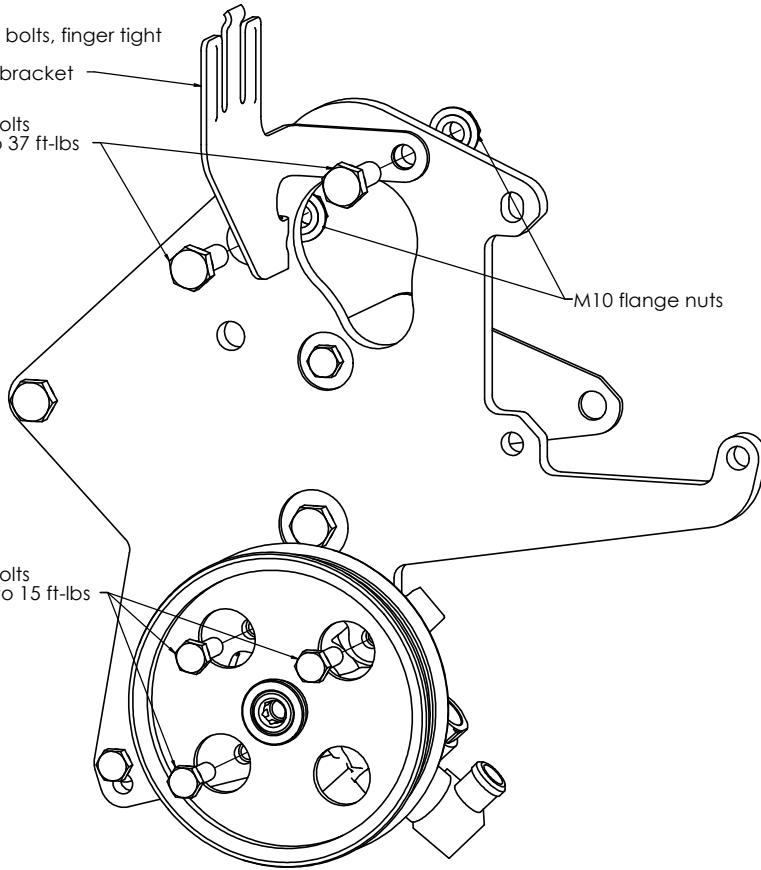
Install two bolts, finger tight

Reservoir bracket

M10x30 bolts  
Tighten to 37 ft-lbs

M10 flange nuts

M8x25 bolts  
Tighten to 15 ft-lbs



## 5. Install reservoir, hose, and idler pulley

Reservoir

Idler post

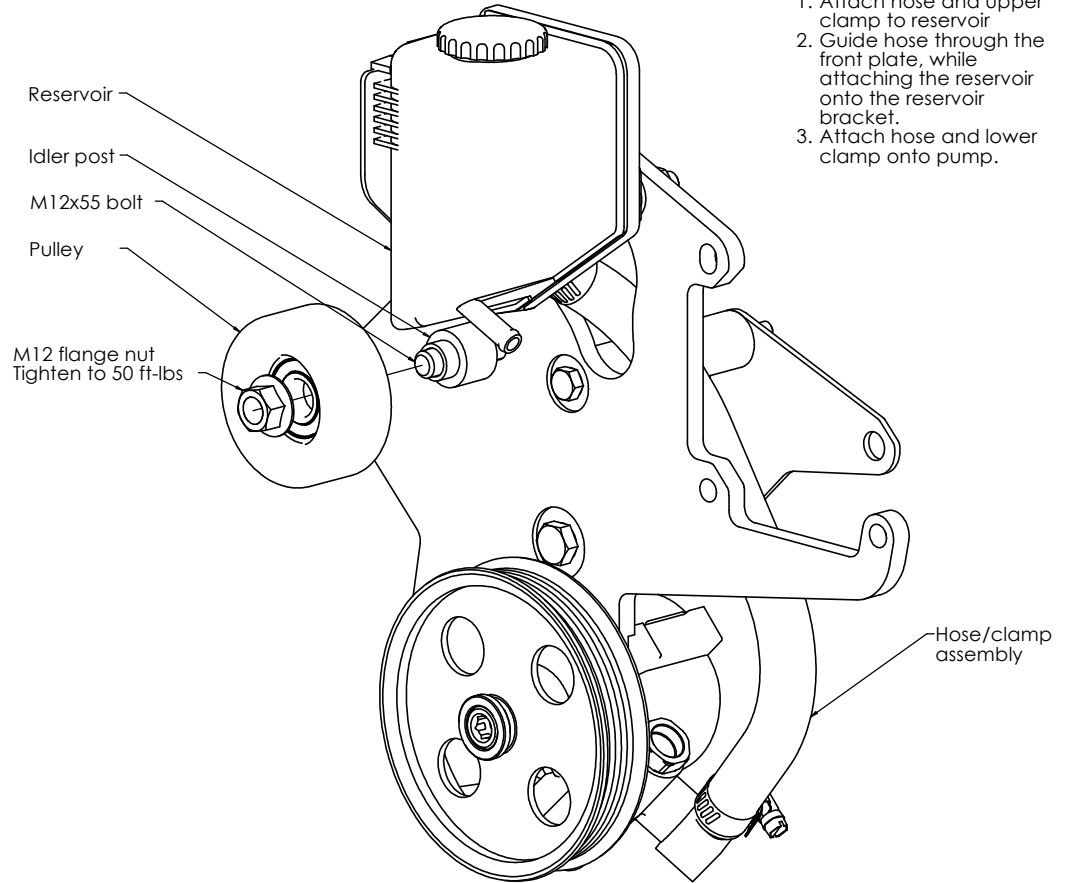
M12x55 bolt

Pulley

M12 flange nut  
Tighten to 50 ft-lbs

Installing reservoir:

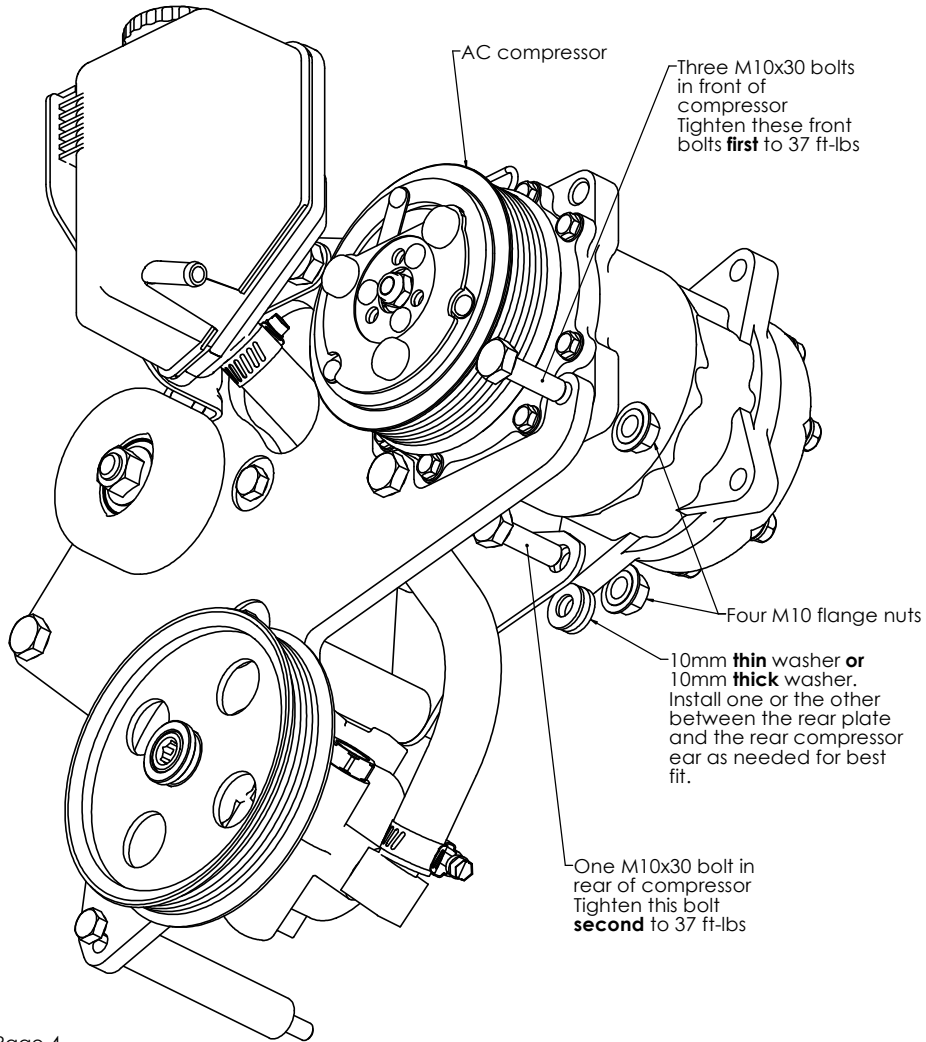
1. Attach hose and upper clamp to reservoir
2. Guide hose through the front plate, while attaching the reservoir onto the reservoir bracket.
3. Attach hose and lower clamp onto pump.



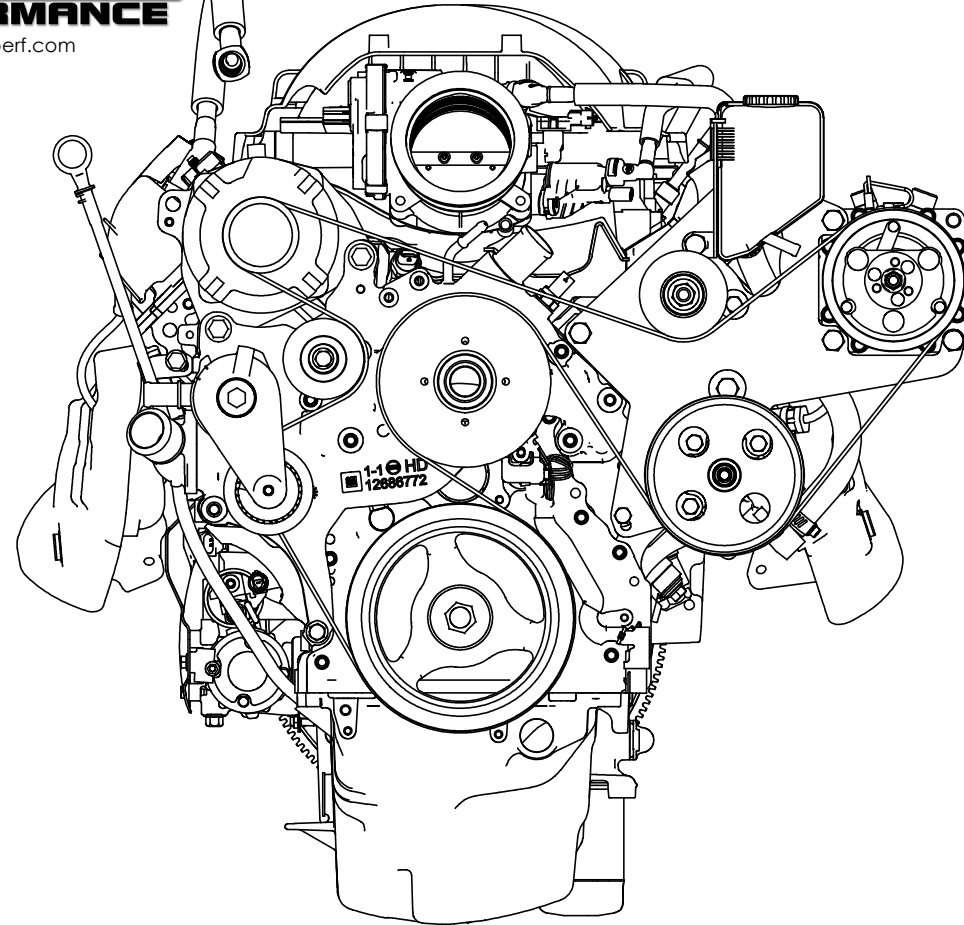
# Installation Instructions for K10595/K10581



## 6. Install AC compressor



## 7. Install belt



Gates belt K061005 is suggested.

**Note:**

Install belt in rear 6 grooves of the 7 groove 4665 compressor.  
Install belt in middle 6 grooves of the 8 groove 4711 compressor.

**Note:** For best performance and longest life, the belt length suggested by Kwik Performance is the shortest belt that can be reasonably installed.

We recommend the following procedure:

1. When installing the serpentine belt, place the belt around all pulleys as shown in the diagram except for the smooth idler pulley next to the power steering reservoir.
2. Check to see that the belt is in the rear 6 grooves of the AC compressor.
3. Check to make sure that the belt is seated all the way in the grooves of each grooved pulley.
4. Retract the tensioner all the way and slip the belt under the smooth idler pulley.
5. Release the tensioner.