

Installation Instructions for K10553

High-mount A/C Bracket for LS engines with truck or 5th gen LS3 Camaro balancer

Kit contents:

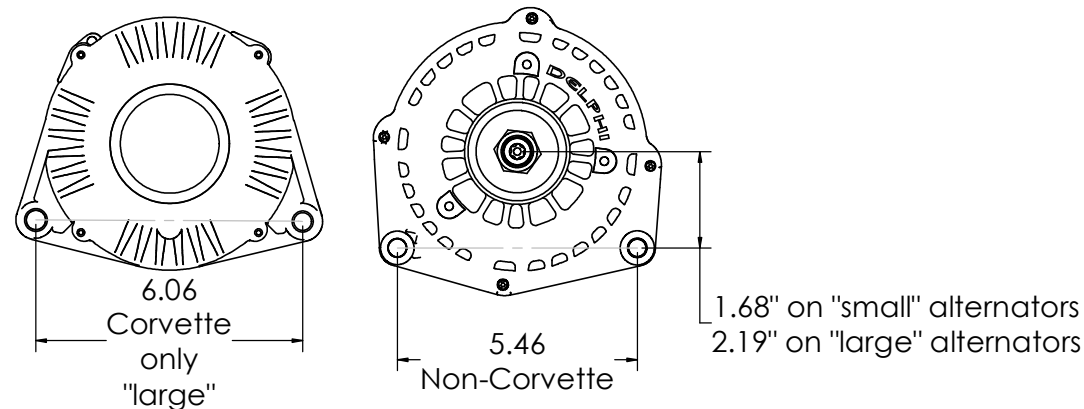
- Mounting plates
- Spacer tubes
- Fasteners
- Idler pulley
- Tensioner

Additional parts required:

- Belt. See chart below.
- AC compressor, Sanden "508" style. Typical SD5 Sanden part number is 6629. However, we recommend the SD7 Sanden part number 4665 for smoother operation and less vibration.

Suggested belt length and Gates PN - K10553 AC bracket - LS truck/LS3 Camaro spacing and alternator			
Kwik Performance Alt/PS bracket K10209		Kwik Performance alternator only bracket K10184	
5.5" diameter power steering pulley and GM 130+ amp alternators ("large" alternators)	5.5" diameter power steering pulley and GM 105 amp or PowerMaster alternators ("small" alternators)	GM 130+ amp alternators ("large" alternators)	GM 105 amp or PowerMaster alternators ("small" alternators)
96-5/8" K060960	96-1/8" K060956	85-1/2" K060849	85-1/4" K060845

Alternator identification



Belt installation

Note:

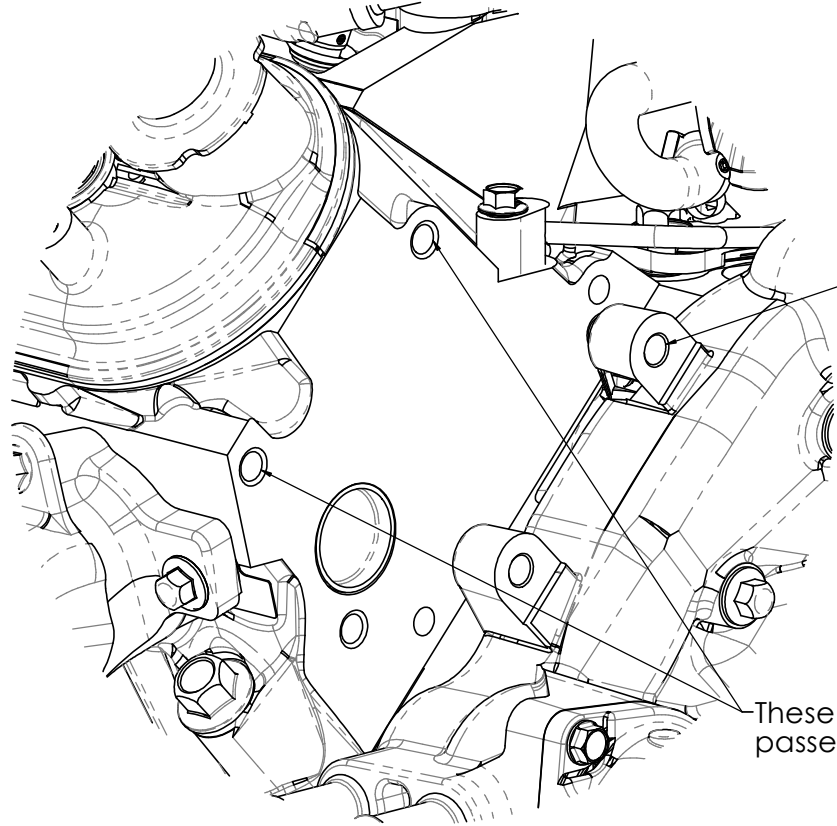
Install belt in rear 6 grooves of 7 groove 4665 compressor.
Install belt in middle 6 grooves of 8 groove 4711 compressor.

Note:

For best performance and longest life, the belt lengths suggested by Kwik Performance are the shortest belt that can be reasonably installed.

We recommend the following procedure:

1. When installing the serpentine belt, place the belt around all pulleys as shown in the diagram except for the water pump pulley.
2. Check to see that the belt is in the correct grooves of the AC compressor.
3. Check to make sure that the belt is seated all the way in the grooves of each grooved pulley.
4. Retract the tensioner all the way and slip the belt onto the water pump pulley.
5. Release the tensioner.

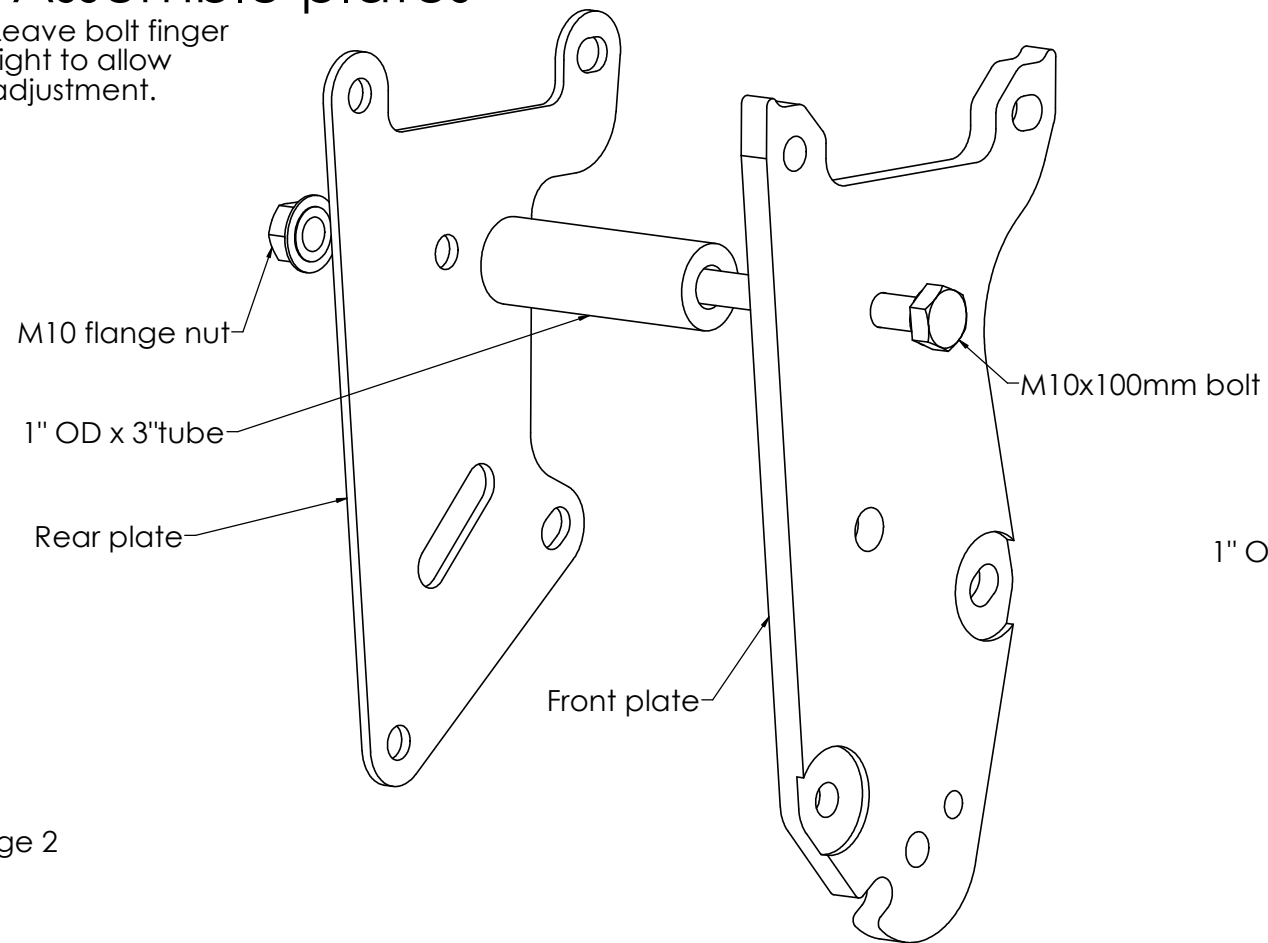


This threaded hole in the water pump will be used.

These 2 threaded holes in the passenger side head will be used.

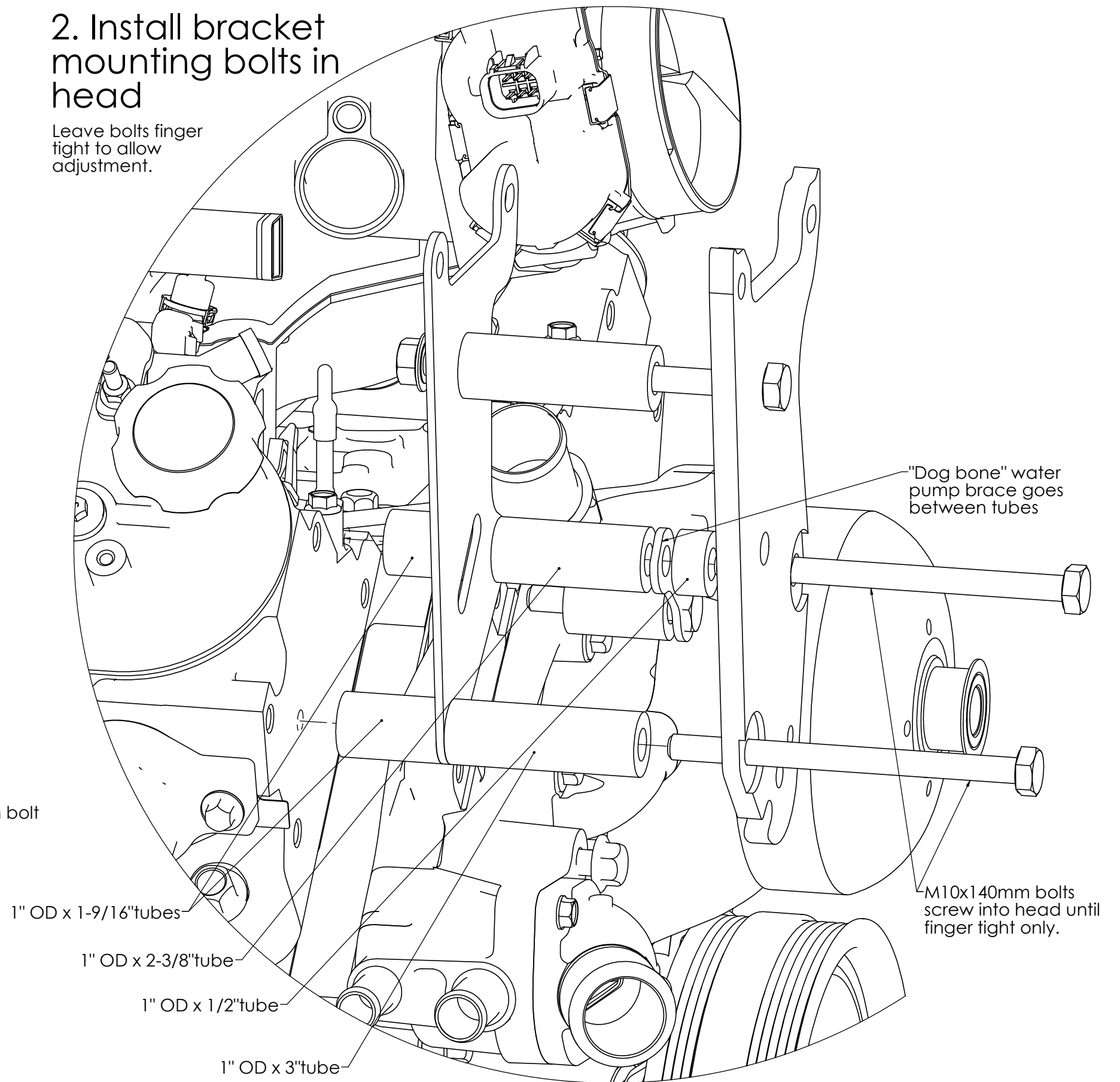
1. Assemble plates

Leave bolt finger tight to allow adjustment.



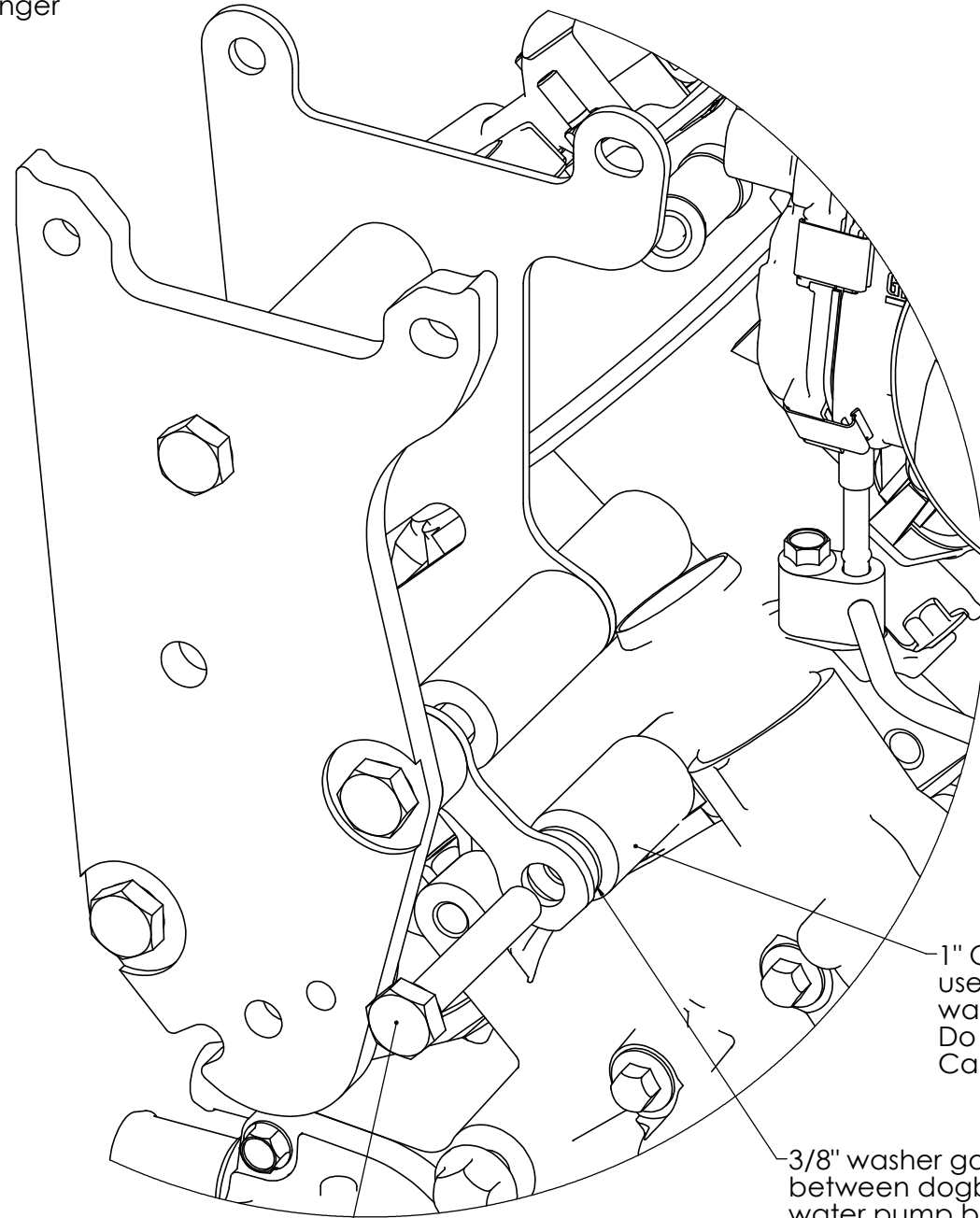
2. Install bracket mounting bolts in head

Leave bolts finger tight to allow adjustment.



3. Install water pump bolt

Leave bolts finger tight to allow adjustment.



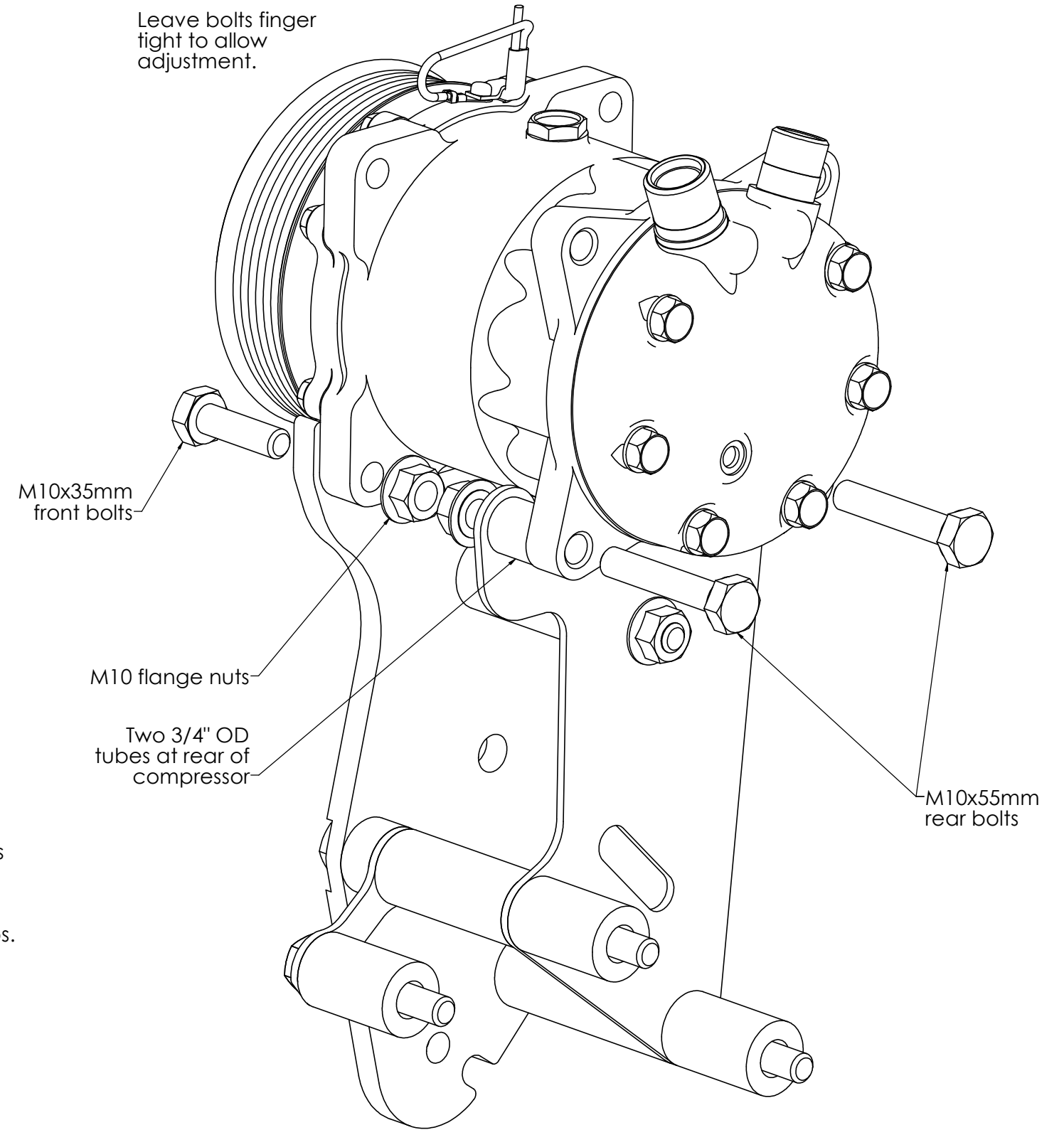
M10x60mm bolt (truck) or M10x20mm bolt (LS3 Camaro) screws into water pump

1" OD x 1-9/16" tube is used **only** on truck water pumps. Do not use on LS3 Camaro water pumps.

3/8" washer goes between dogbone water pump brace and water pump **only** on LS3 Camaro water pumps. Do not use on truck water pumps.

4. Install AC compressor

Leave bolts finger tight to allow adjustment.



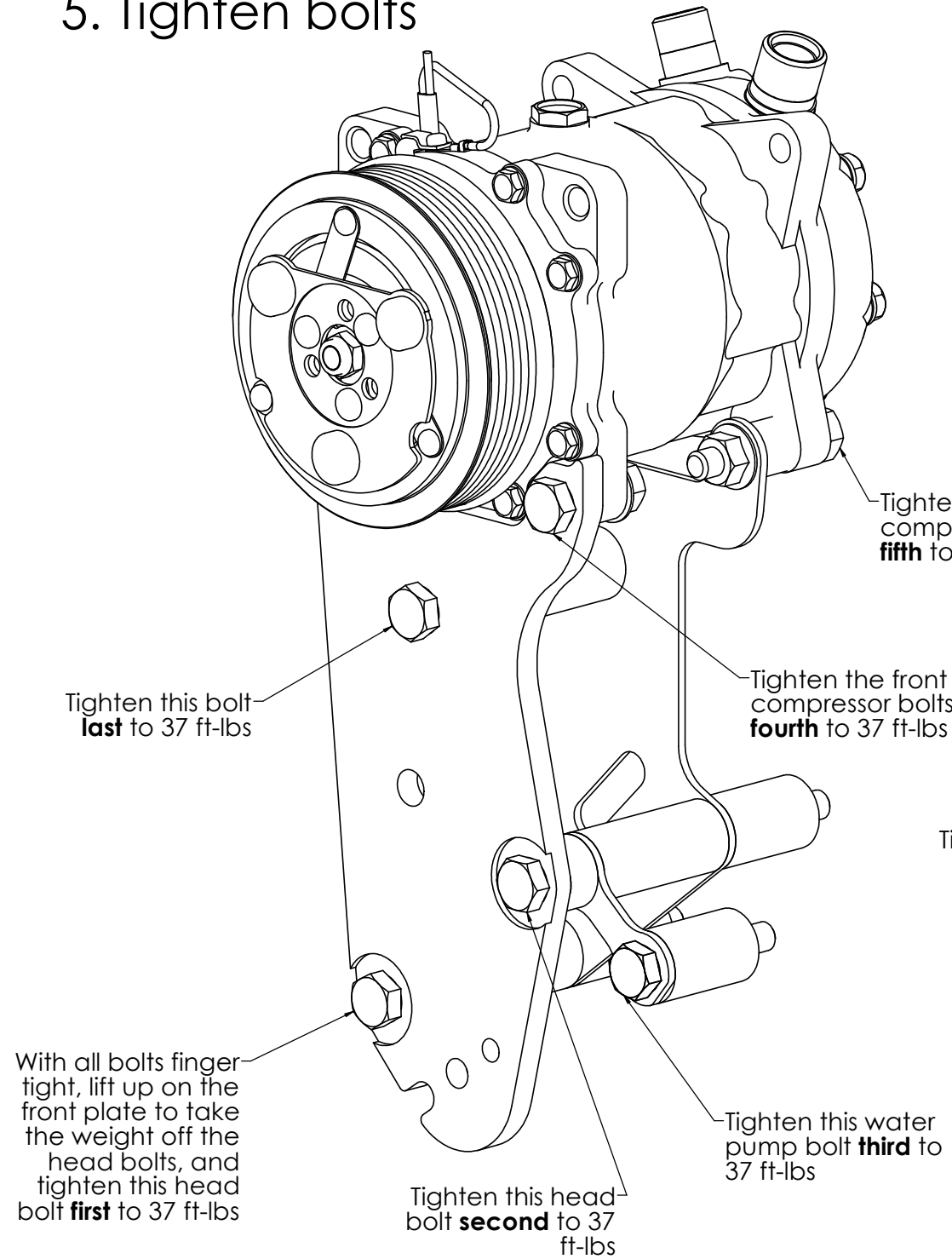
M10x35mm front bolts

M10 flange nuts

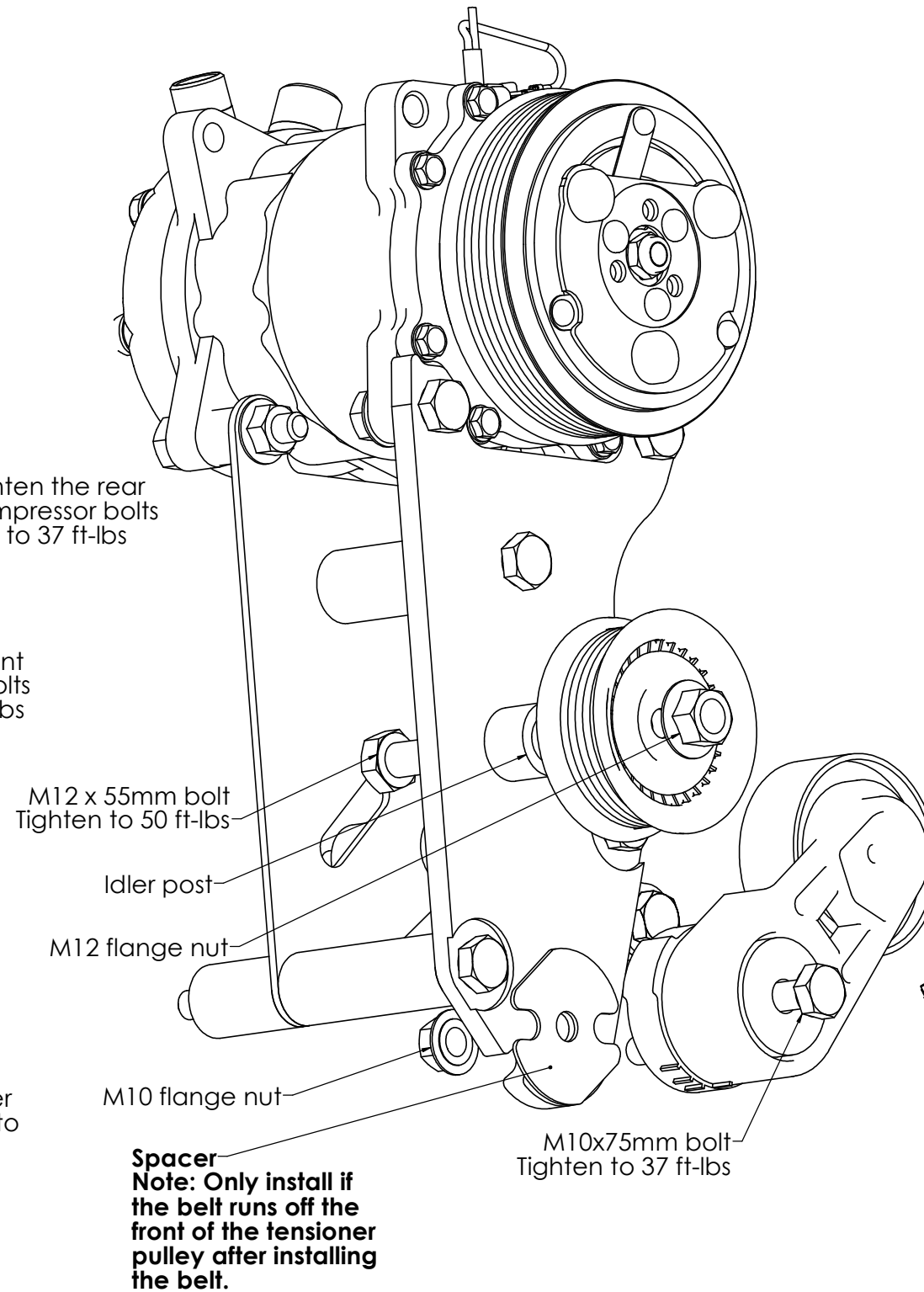
Two 3/4" OD tubes at rear of compressor

M10x55mm rear bolts

5. Tighten bolts



6. Install tensioner and idler



7. Install belt

See page 1 for belt length recommendations and instructions.

