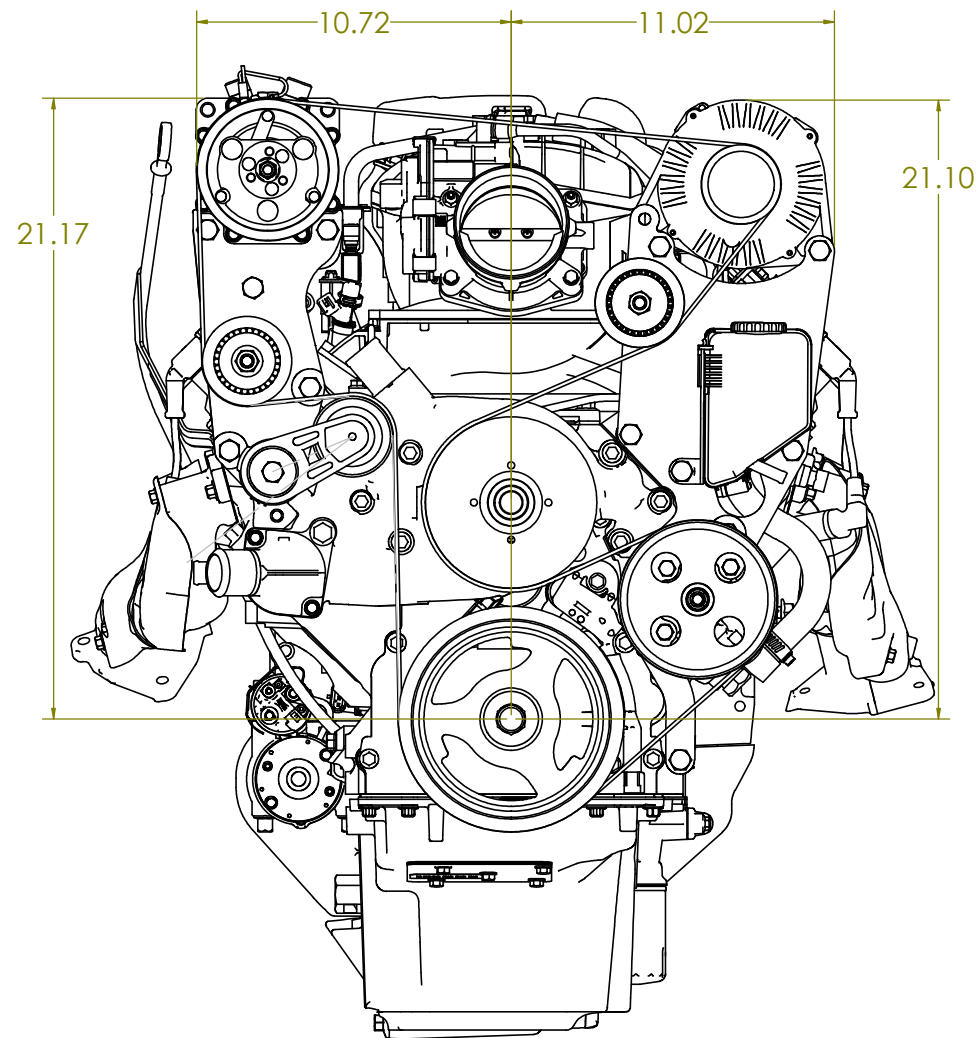


## Installation Instructions for K10552

### High-mount A/C Bracket for LS1 engines with 4th gen F-body balancer



#### Kit contents:

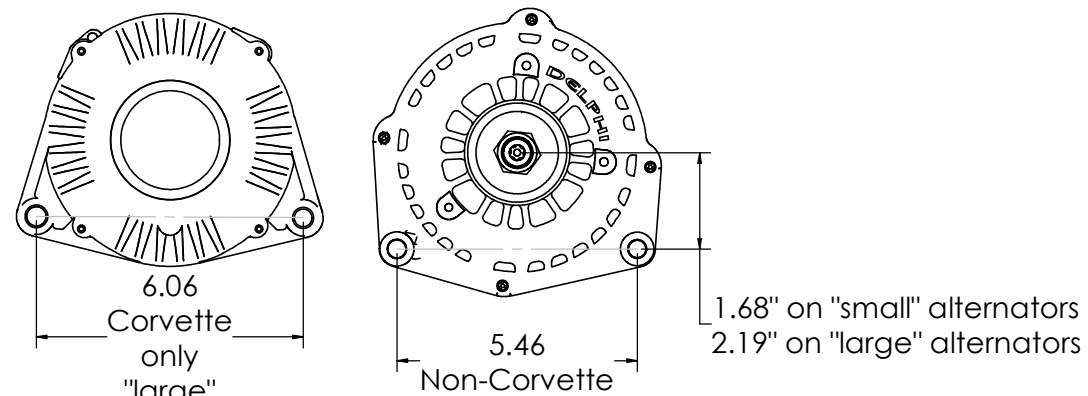
- Mounting plates
- Spacer tubes
- Fasteners
- Idler pulley
- Tensioner

#### Additional parts required:

- Belt. See chart below.
- AC compressor, Sanden "508" style. Typical SD5 Sanden part number is 6629. However, we recommend the SD7 Sanden part number 4665 for smoother operation and less vibration.

Suggested belt length and Gates PN - K10552 AC bracket - LS1 F-body spacing			
Kwik Performance Alt/PS bracket K10209		Kwik Performance alternator only bracket K10184	
5.5" diameter power steering pulley and GM 130+ amp alternators ("large" alternators)	5.5" diameter power steering pulley and GM 105 amp or PowerMaster alternators ("small" alternators)	GM 130+ amp alternators ("large" alternators)	GM 105 amp or PowerMaster alternators ("small" alternators)
<b>96-5/8" K060960</b>	<b>96-1/8" K060956</b>	<b>85-1/2" K060849</b>	<b>85-1/4" K060845</b>

#### Alternator identification



#### Belt installation

##### Note:

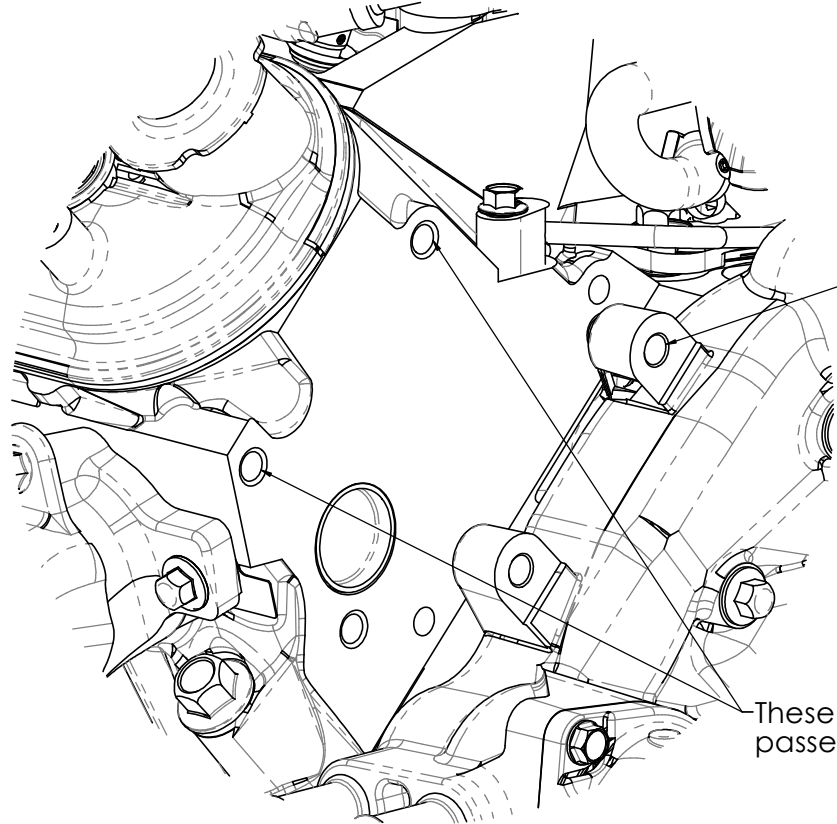
Install belt in rear 6 grooves of 7 groove 4665 compressor.  
Install belt in middle 6 grooves of 8 groove 4711 compressor.

##### Note:

For best performance and longest life, the belt lengths suggested by Kwik Performance are the shortest belt that can be reasonably installed.

We recommend the following procedure:

1. When installing the serpentine belt, place the belt around all pulleys as shown in the diagram except for the water pump pulley.
2. Check to see that the belt is in the correct grooves of the AC compressor.
3. Check to make sure that the belt is seated all the way in the grooves of each grooved pulley.
4. Retract the tensioner all the way and slip the belt onto the water pump pulley.
5. Release the tensioner.

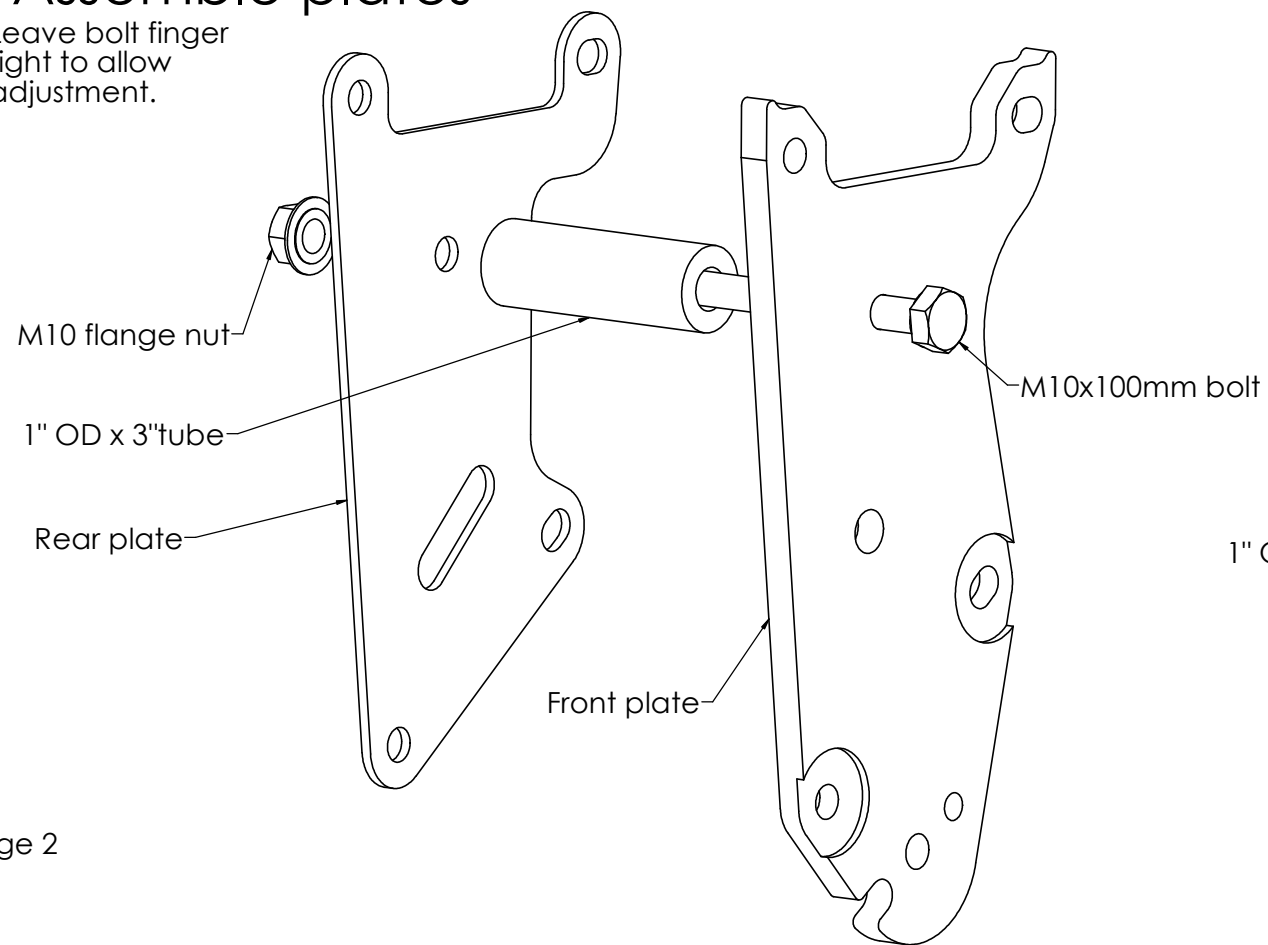


This threaded hole in the water pump will be used.

These 2 threaded holes in the passenger side head will be used.

### 1. Assemble plates

Leave bolt finger tight to allow adjustment.



M10 flange nut

1" OD x 3" tube

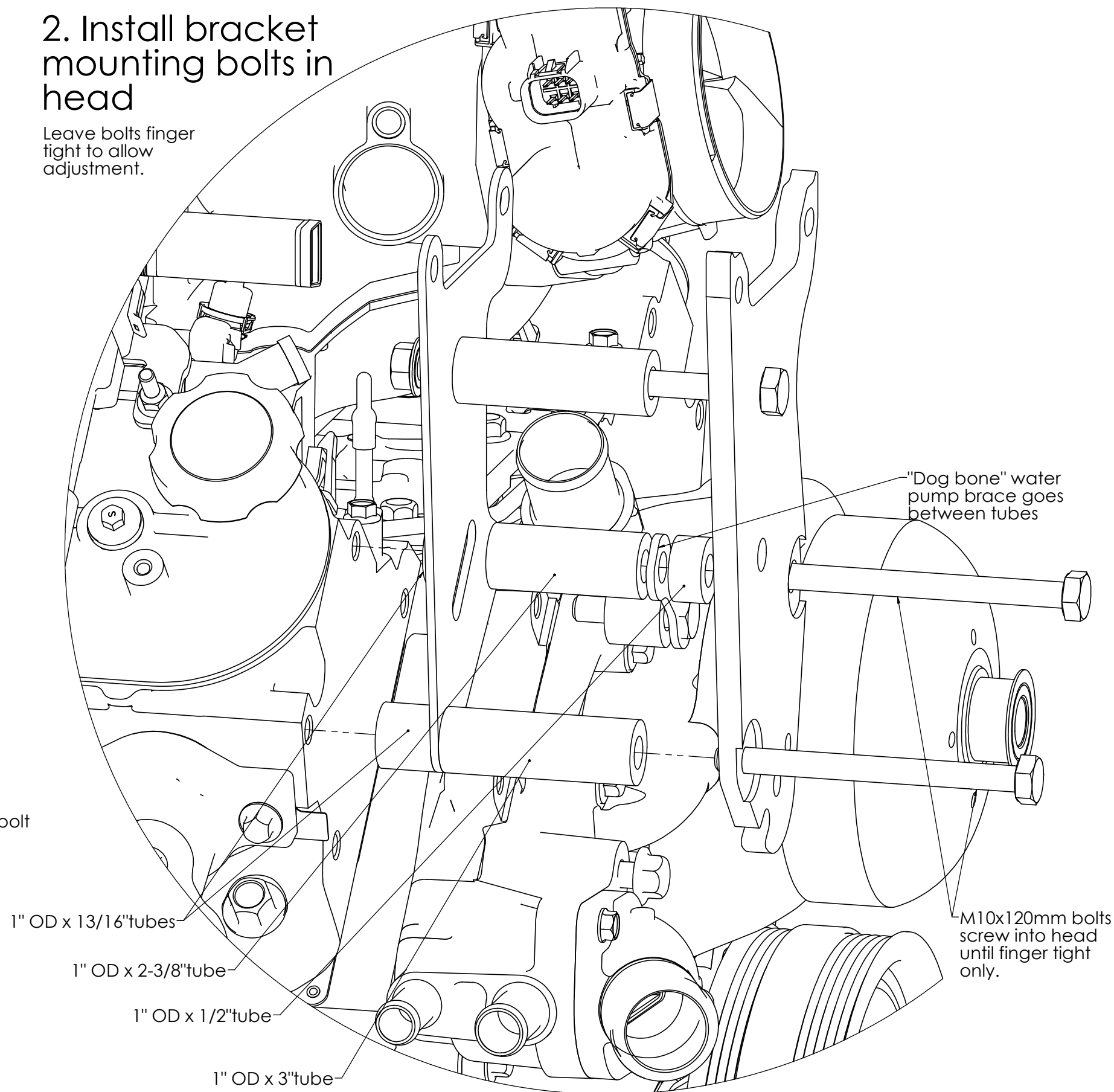
Rear plate

Front plate

M10x100mm bolt

### 2. Install bracket mounting bolts in head

Leave bolts finger tight to allow adjustment.



1" OD x 13/16" tubes

1" OD x 2-3/8" tube

1" OD x 1/2" tube

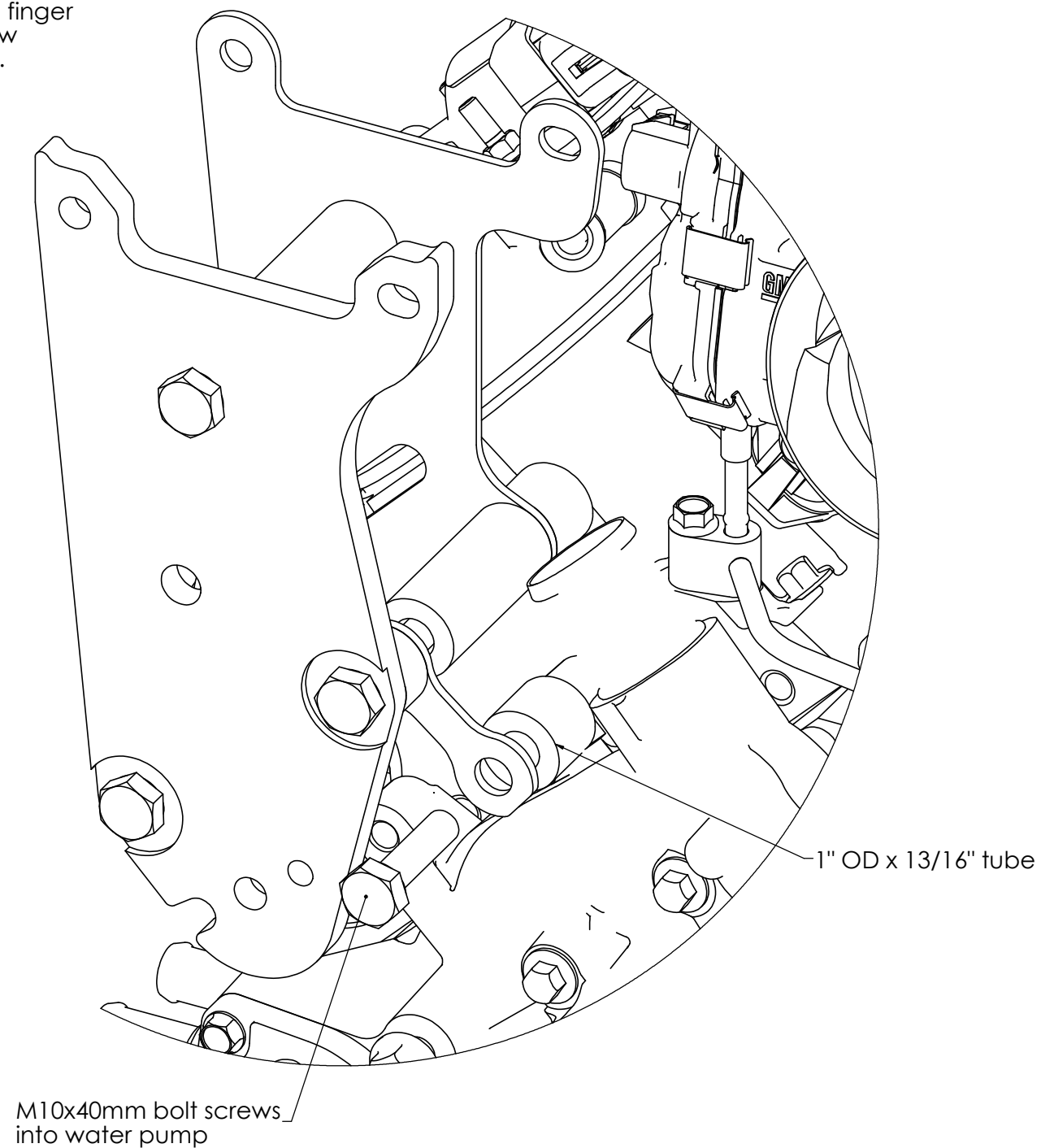
1" OD x 3" tube

"Dog bone" water pump brace goes between tubes

M10x120mm bolts screw into head until finger tight only.

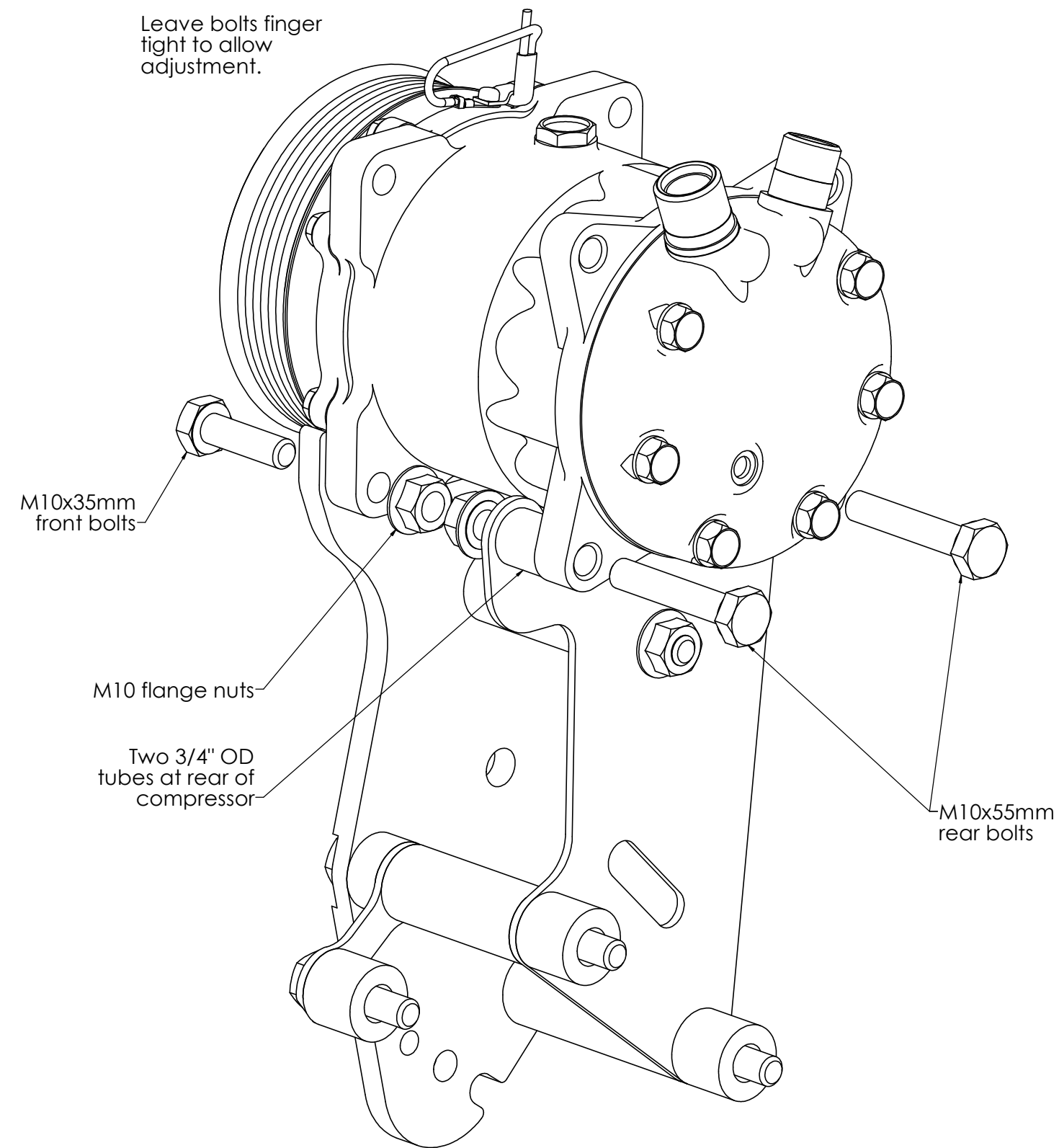
### 3. Install water pump bolt

Leave bolts finger tight to allow adjustment.

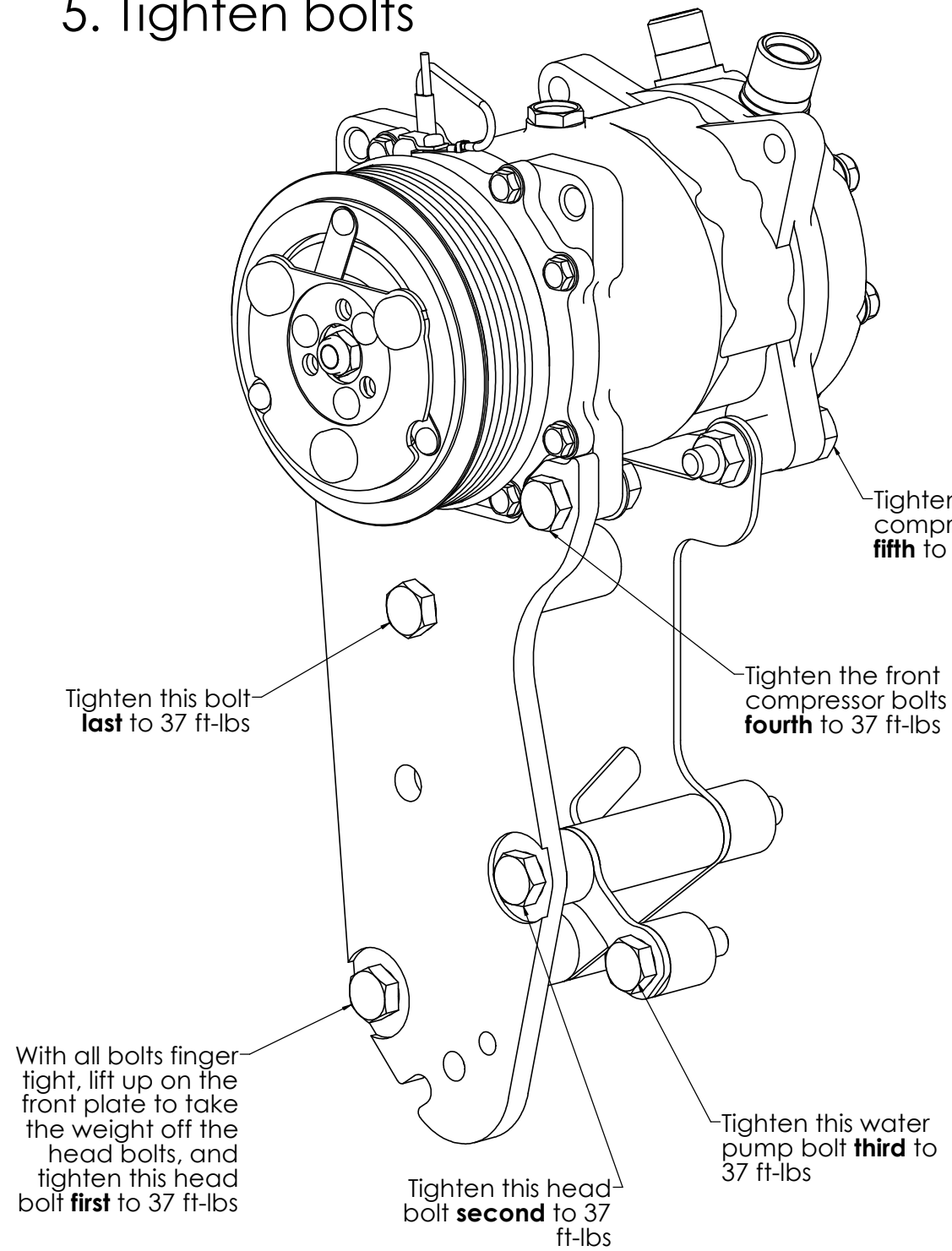


### 4. Install AC compressor

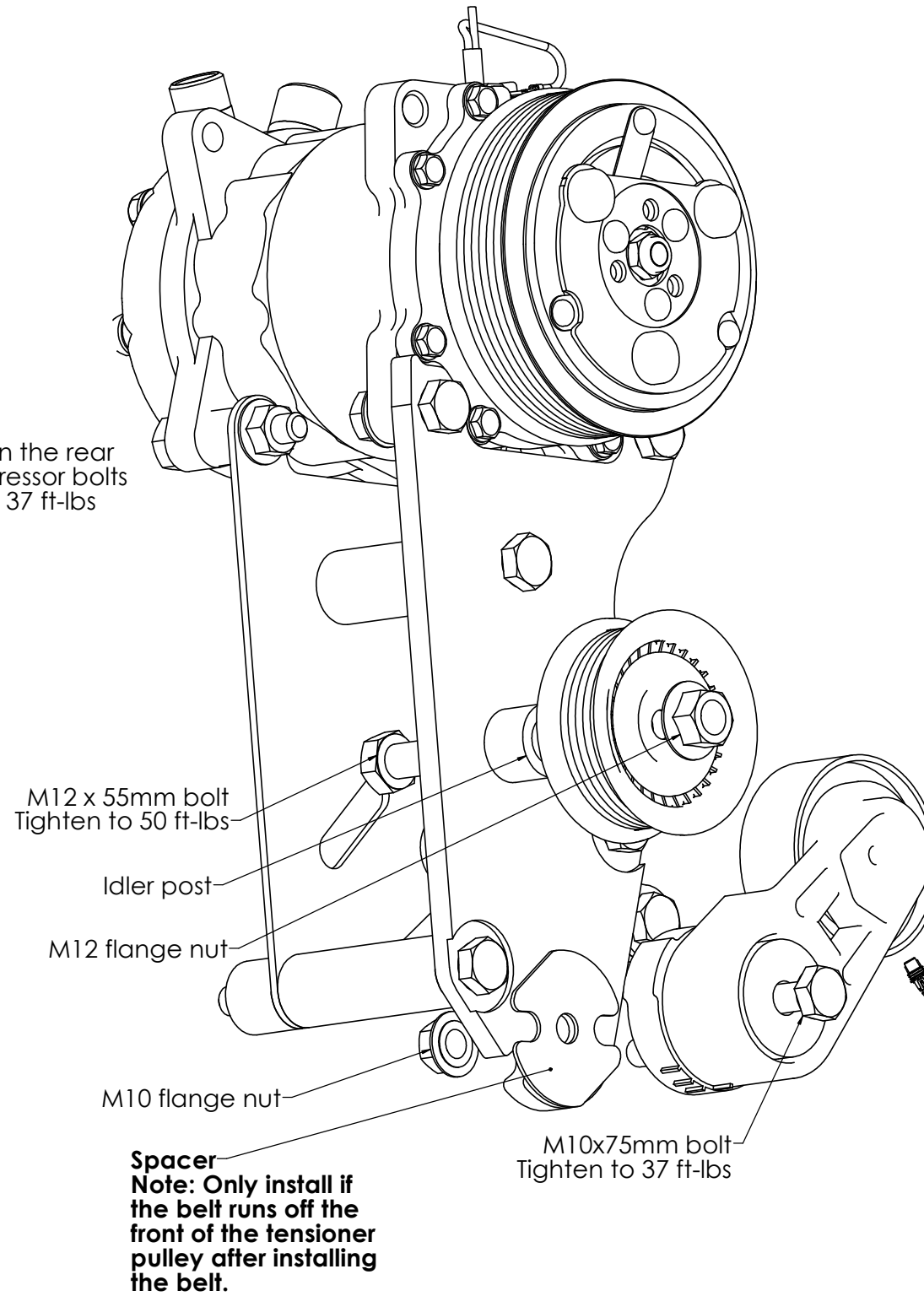
Leave bolts finger tight to allow adjustment.



### 5. Tighten bolts



### 6. Install tensioner and idler



### 7. Install belt

See page 1 for belt length recommendations and instructions

