



Installation Instructions for K10551

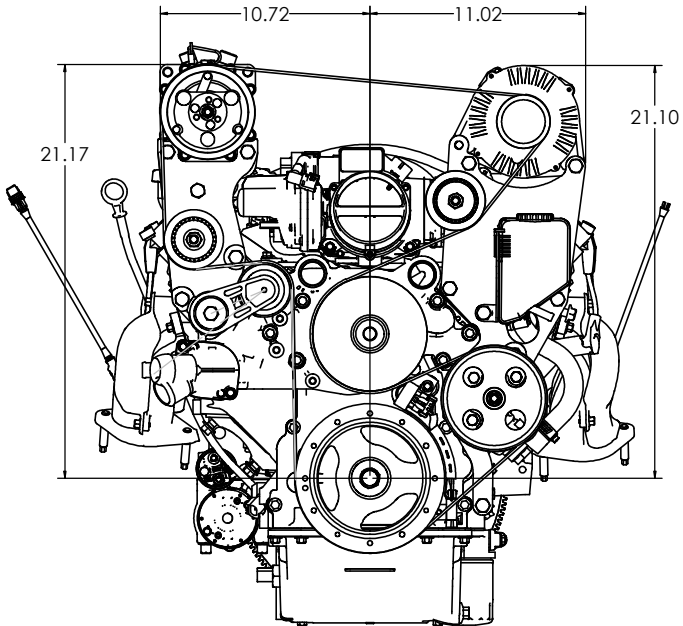
High-mount A/C Bracket for LS engines with Corvette balancer

Kit contents:

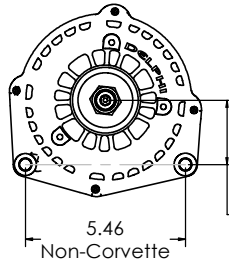
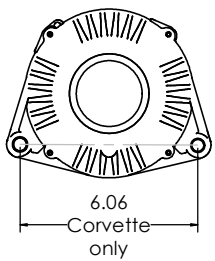
- Mounting plates
- Spacer tubes
- Fasteners
- Idler pulley
- Tensioner

Additional parts required:

- Belt. See chart below.
- AC compressor, Sanden "508" style. Typical SD5 Sanden part number is 6629. However, we recommend the SD7 Sanden part number 4665 for smoother operation and less vibration.



Alternator identification



1.68" on "small" alternators
2.19" on "large" alternators

Suggested belt length and Gates PN - K10551 AC bracket - LS Corvette spacing and alternator			
Kwik Performance Alt/PS bracket K10207		Kwik Performance alternator only bracket K10182	
5.5" diameter power steering pulley and Corvette alternator ("large" alternators)	5.5" diameter power steering pulley and PowerMaster alternators ("small" alternators)	Corvette alternator ("large" alternators)	PowerMaster alternators ("small" alternators)
96-5/8" K060960	96-1/8" K060956	85-1/2" K060849	84-3/4" K060842

Belt installation

Note:
Install belt in rear 6 grooves of 7 groove 4665 compressor.
Install belt in middle 6 grooves of 8 groove 4711 compressor.

Note:
For best performance and longest life, the belt lengths suggested by Kwik Performance are the shortest belt that can be reasonably installed.

We recommend the following procedure:

1. When installing the serpentine belt, place the belt around all pulleys as shown in the diagram except for the water pump pulley.
2. Check to see that the belt is in the correct grooves of the AC compressor.
3. Check to make sure that the belt is seated all the way in the grooves of each grooved pulley.
4. Retract the tensioner all the way and slip the belt onto the water pump pulley.
5. Release the tensioner.

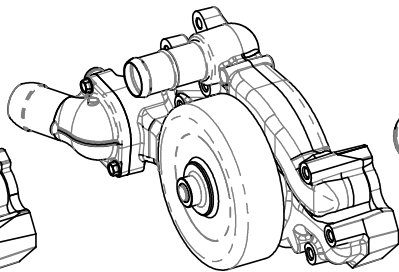
Water pump identification

Needed for Installation Step 3.

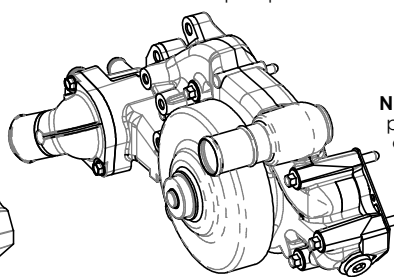
LS1 and LS6 water pump:



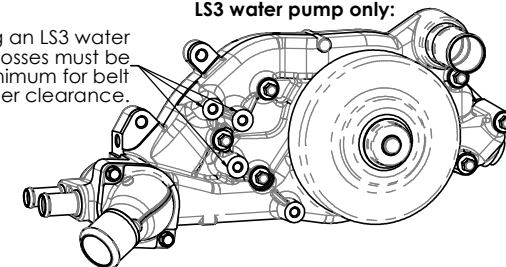
LS2 and LS7 water pump:



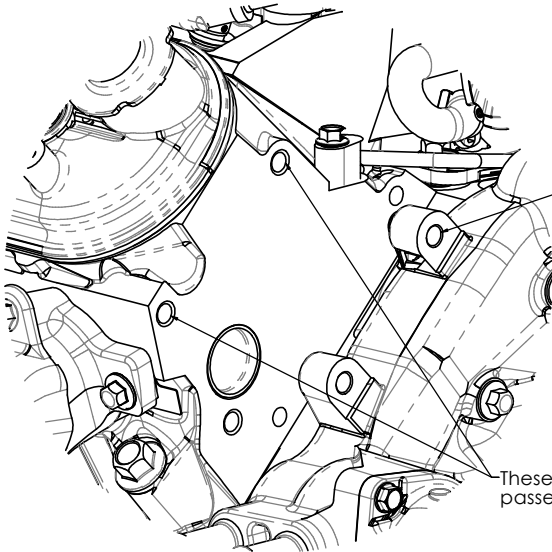
LS3 water pump:



LS3 water pump only:



Note: When using an LS3 water pump, these 3 bosses must be cut off 3/16" minimum for belt and tensioner clearance.

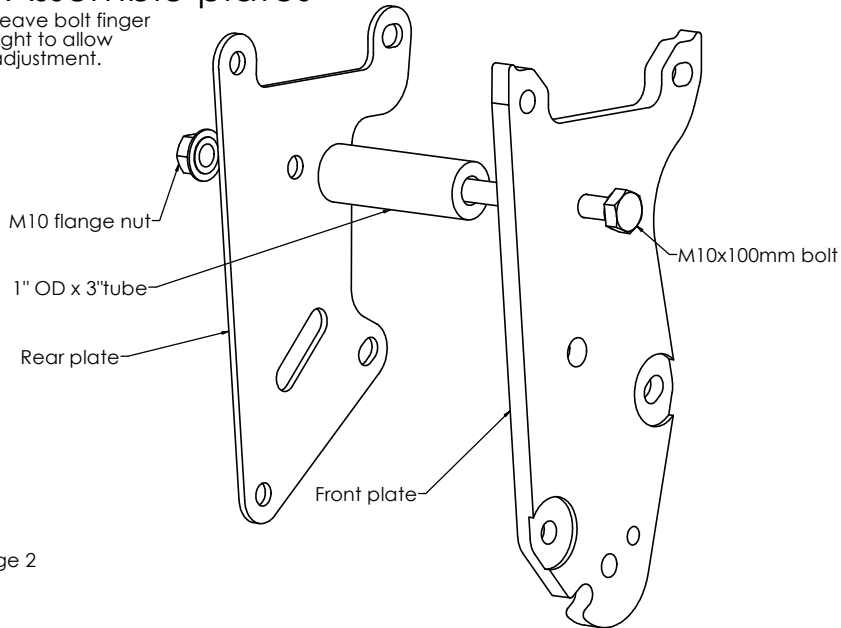


This threaded hole in the water pump will be used.

These 2 threaded holes in the passenger side head will be used.

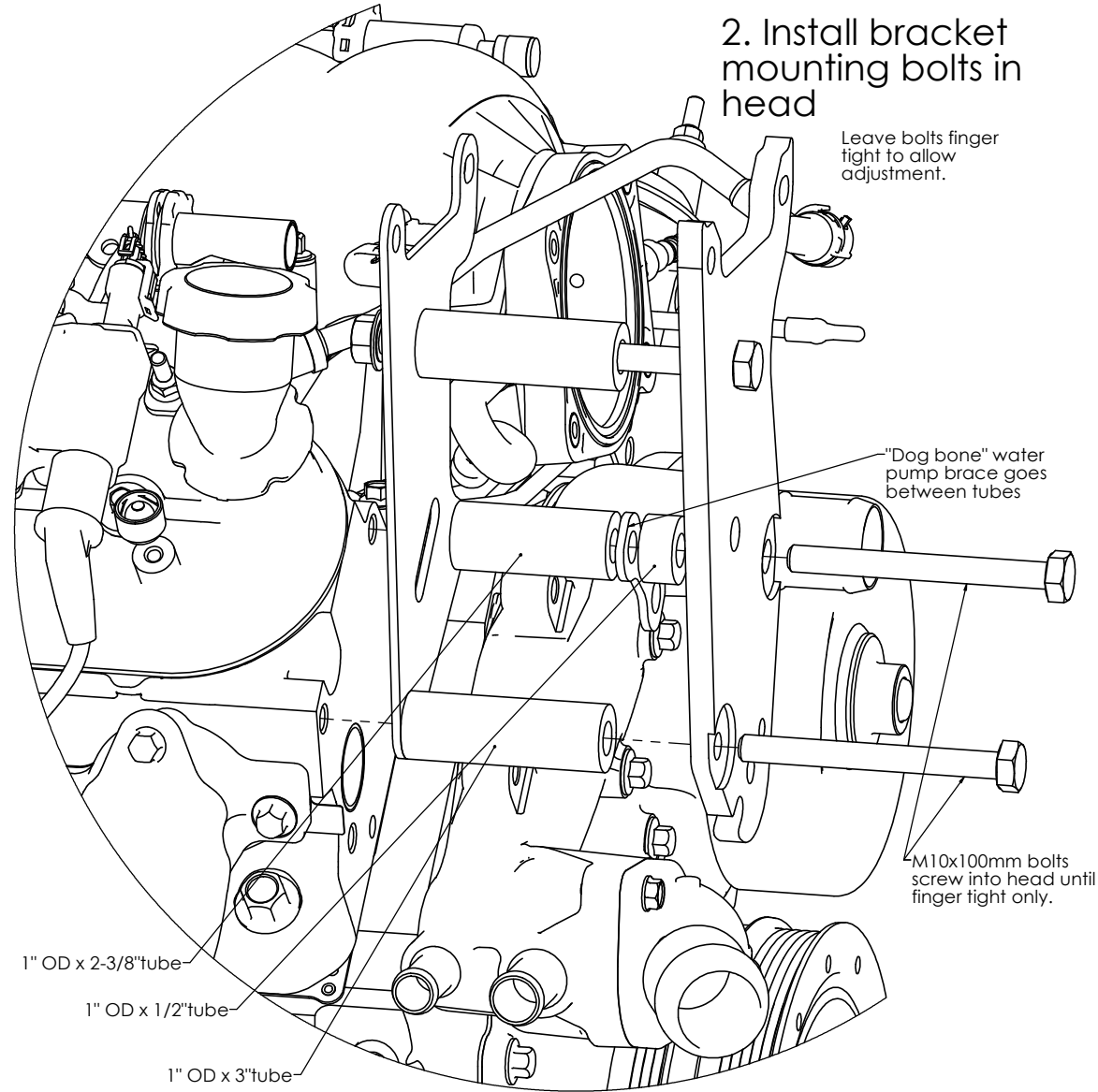
1. Assemble plates

Leave bolt finger tight to allow adjustment.



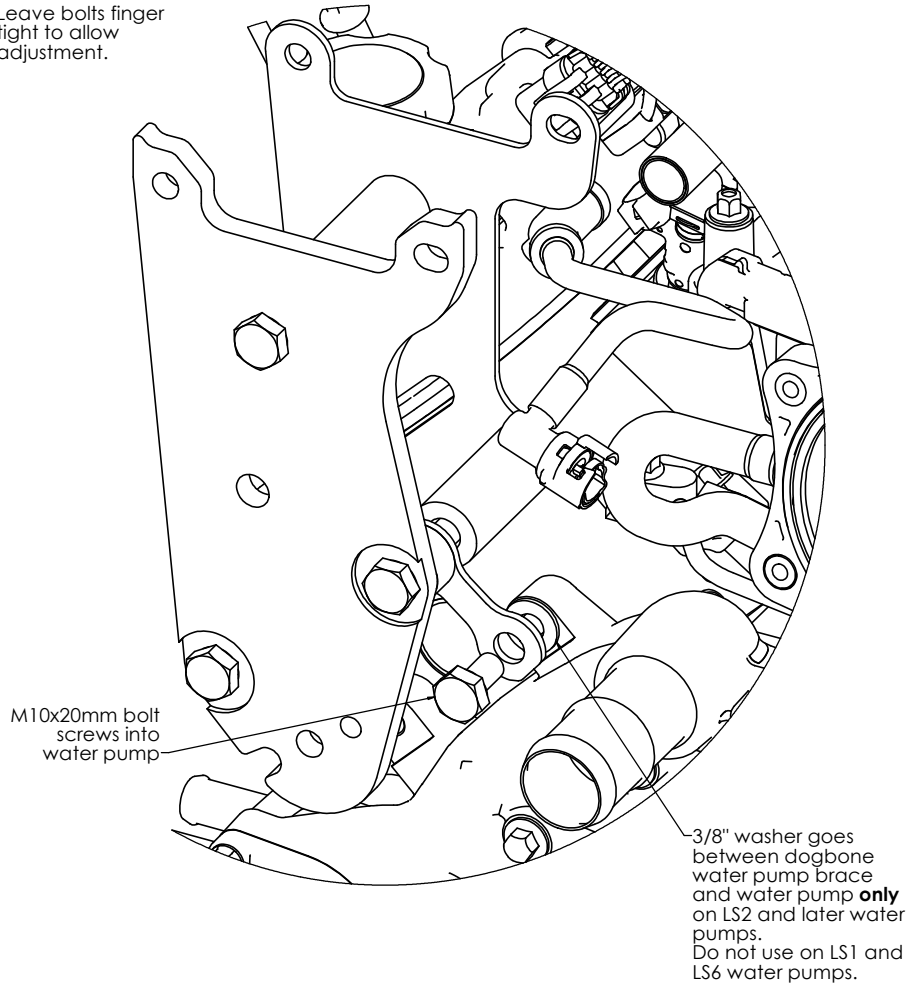
2. Install bracket mounting bolts in head

Leave bolts finger tight to allow adjustment.



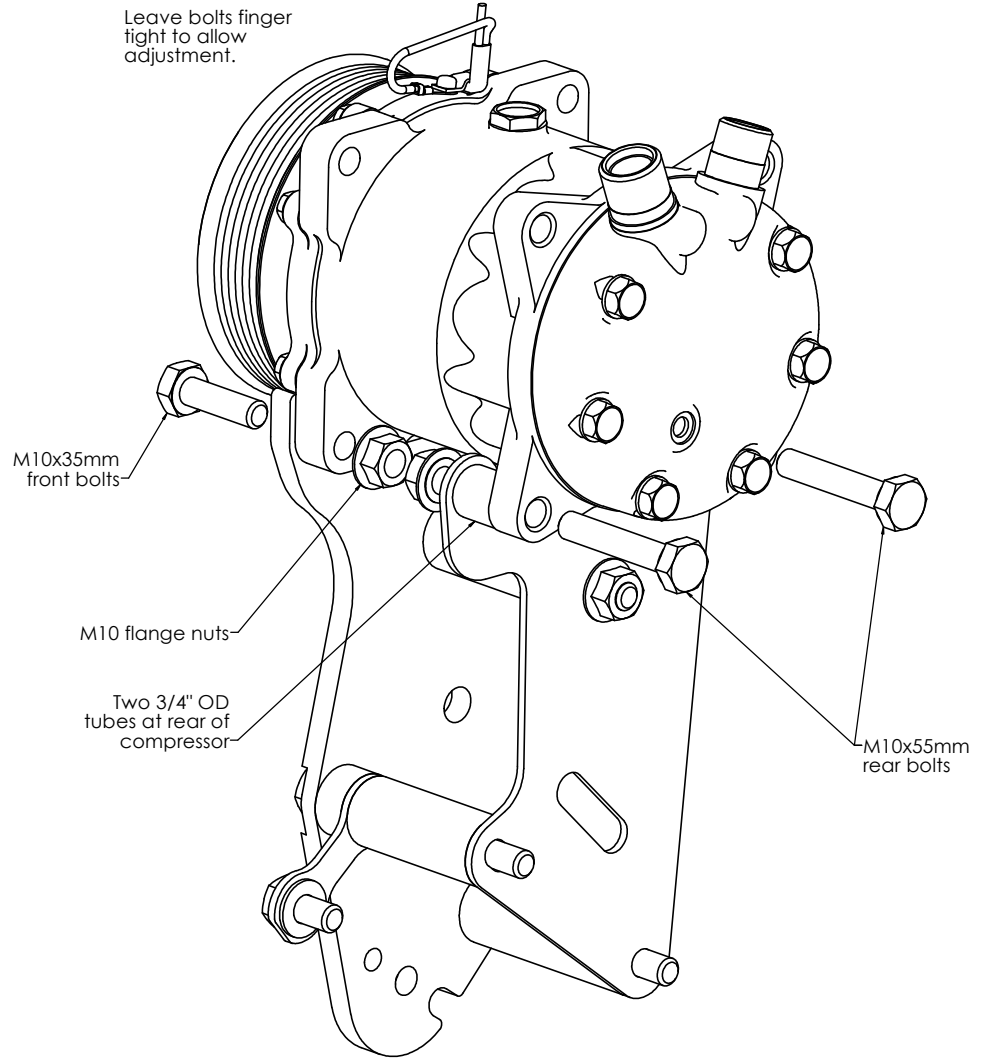
3. Install water pump bolt

Leave bolts finger tight to allow adjustment.

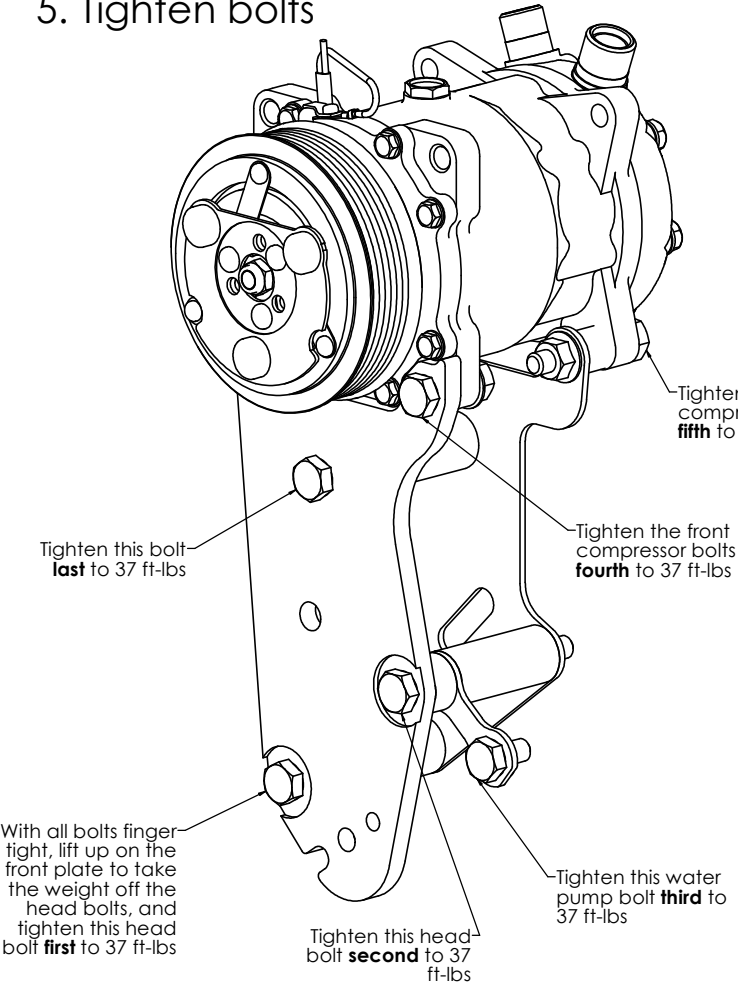


4. Install AC compressor

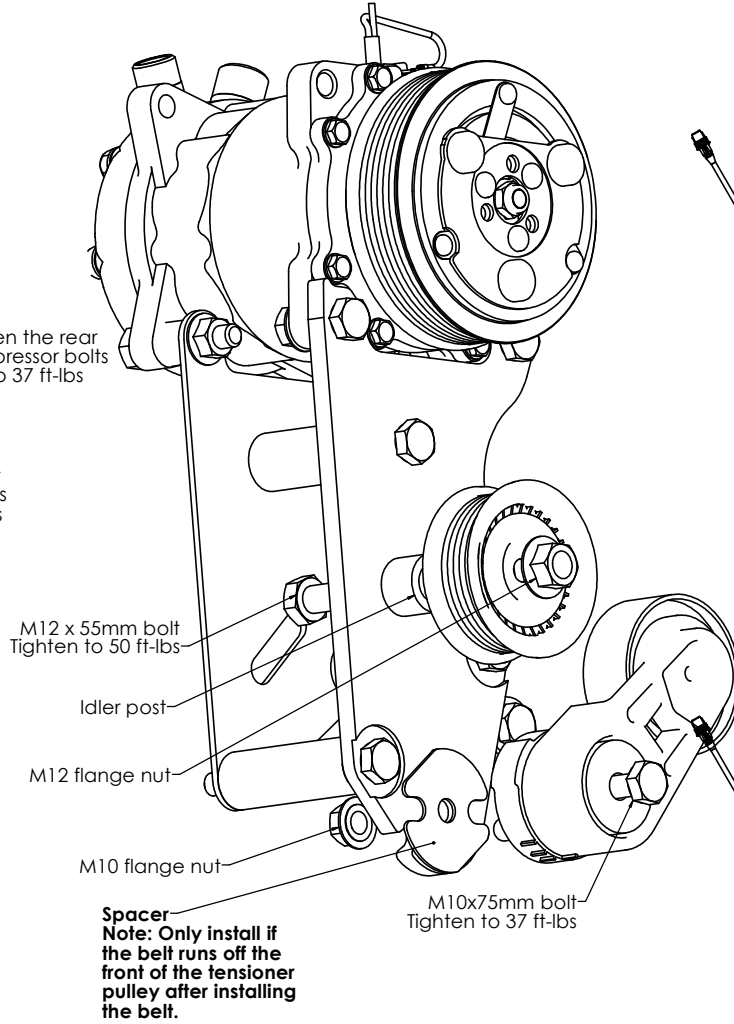
Leave bolts finger tight to allow adjustment.



5. Tighten bolts



6. Install tensioner and idler



7. Install belt

See page 1 for belt length recommendations and instructions

