

Installation Instructions for K10207, K10208, & K10209

High mount alternator and power steering pump bracket for LS engines

Suggested belt length and Gates part number with 5.5" diameter power steering pulley			
With AC bracket K10551, K10552, or K10553		With factory tensioner, no AC	
With Corvette alternator, GM 130+ amp alternator, or "large" alternators	With GM 105 amp alternator, or PowerMaster alternators, or "small" alternators	With Corvette alternator, GM 130+ amp alternator, or "large" alternators	With GM 105 amp alternator, or PowerMaster alternators, or "small" alternators
96-5/8" K060960	96-1/8" K060956	79" K060785	78" K060775

Kit contents:

- Mounting plates
- Spacer tubes
- Fasteners
- Idler pulley

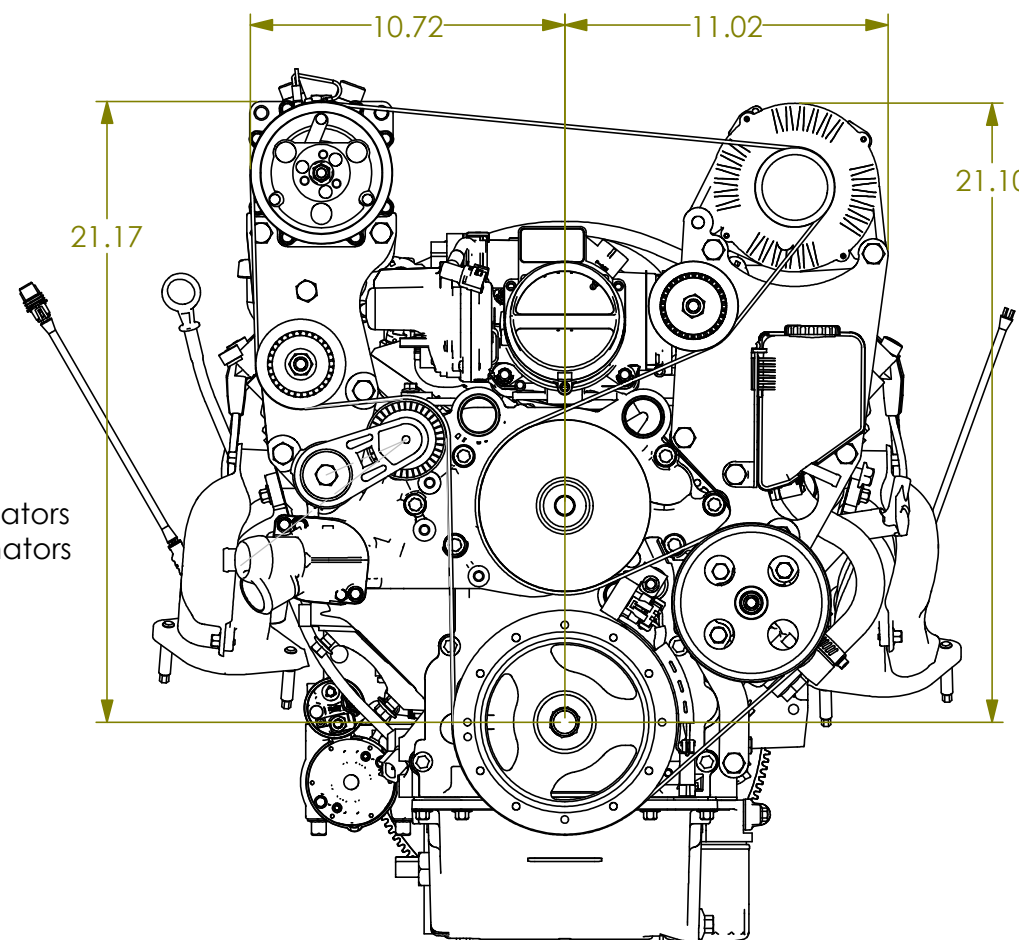
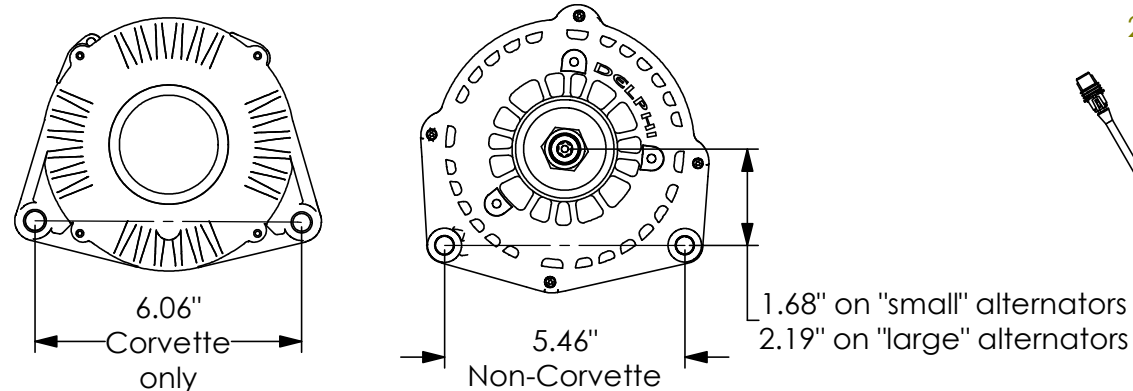
Additional parts required:

- Alternator
- Power steering pump with pulley
- Belt. See chart below.

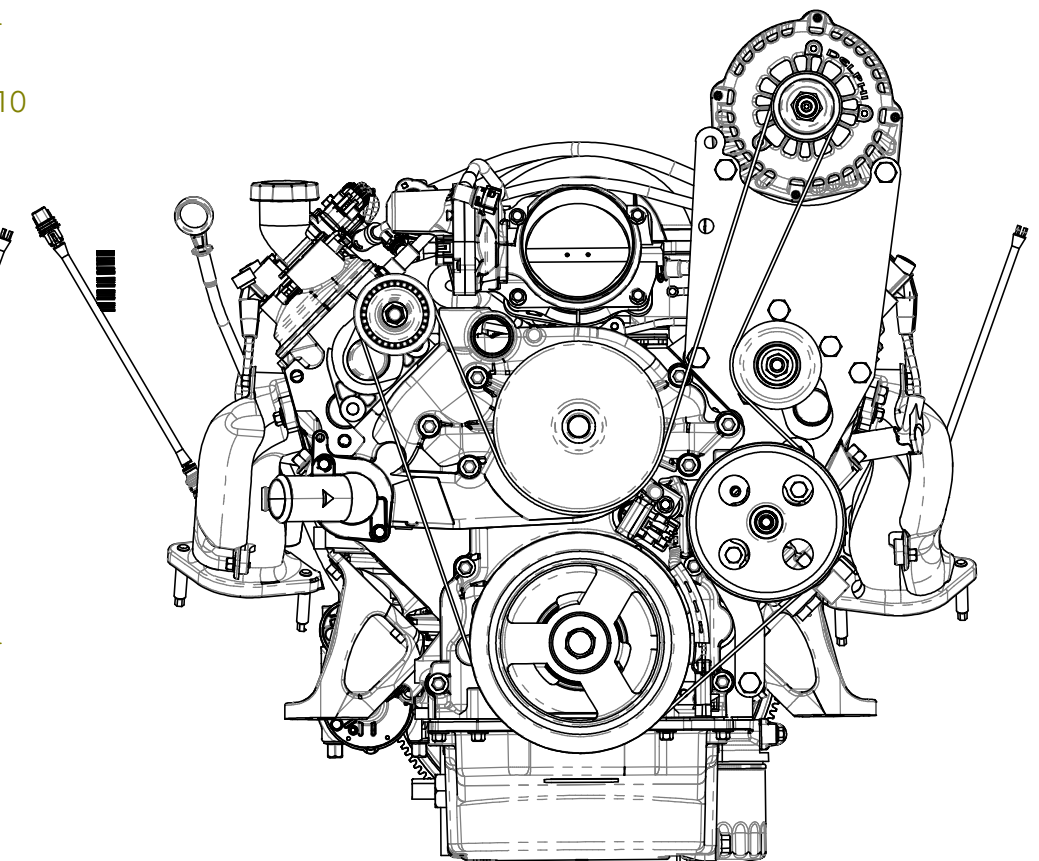
Optional available parts:

- Power steering reservoir
- Power steering hoses

Alternator identification



Belt routing with AC bracket

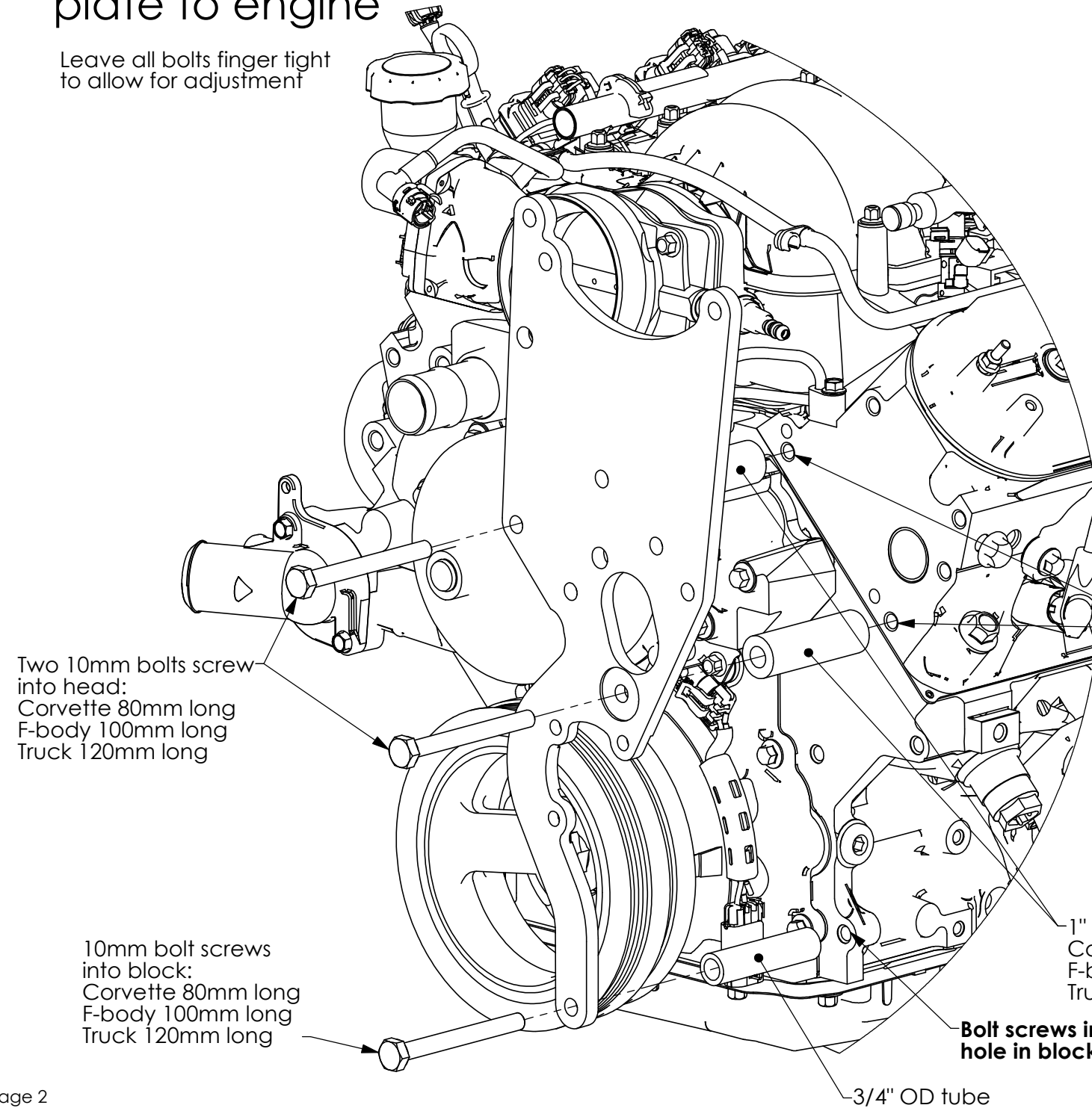


Belt routing without AC bracket

Installation Instructions for Alternator and PS pump high mount bracket for LS engines

1. Mount front plate to engine

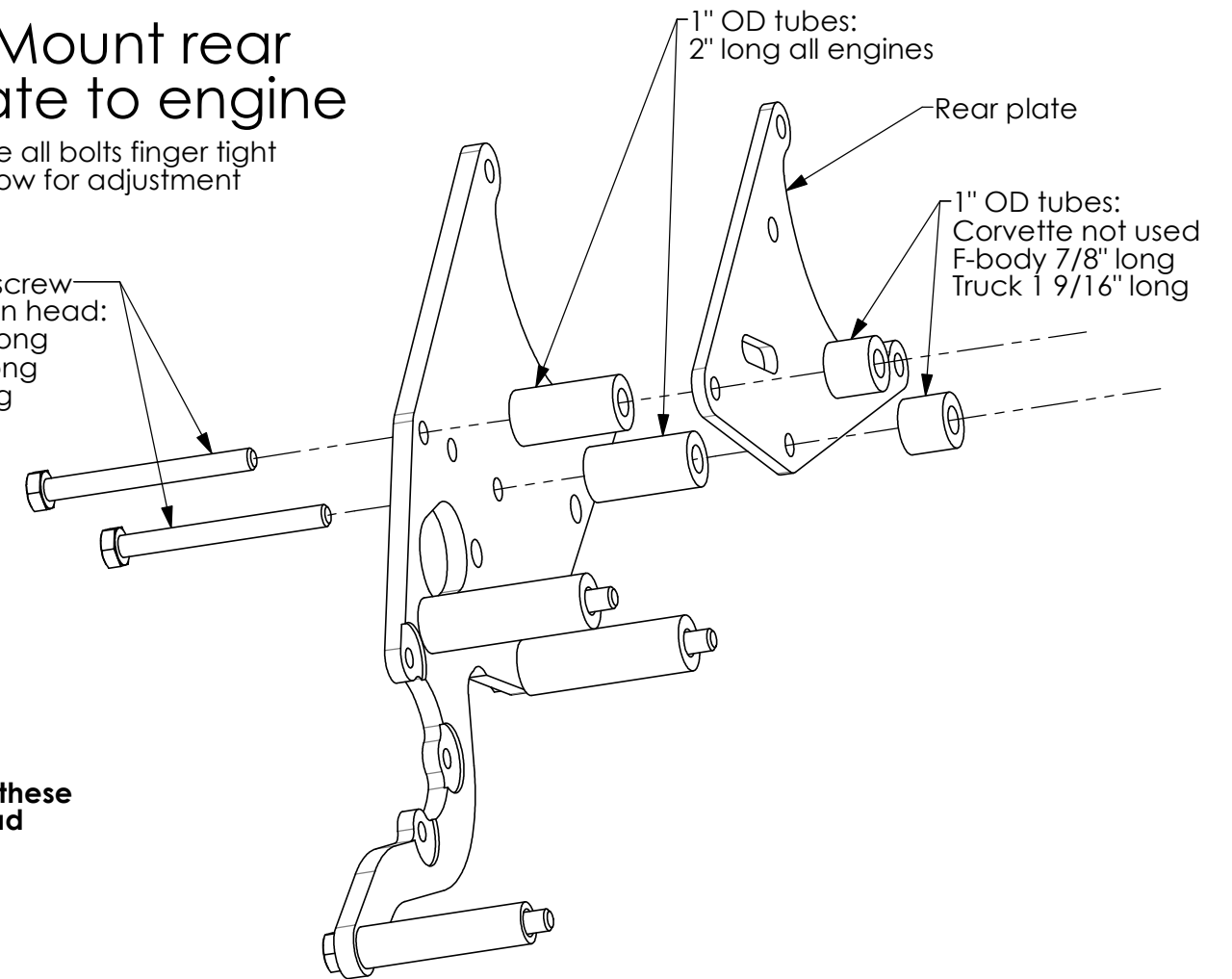
Leave all bolts finger tight to allow for adjustment



2. Mount rear plate to engine

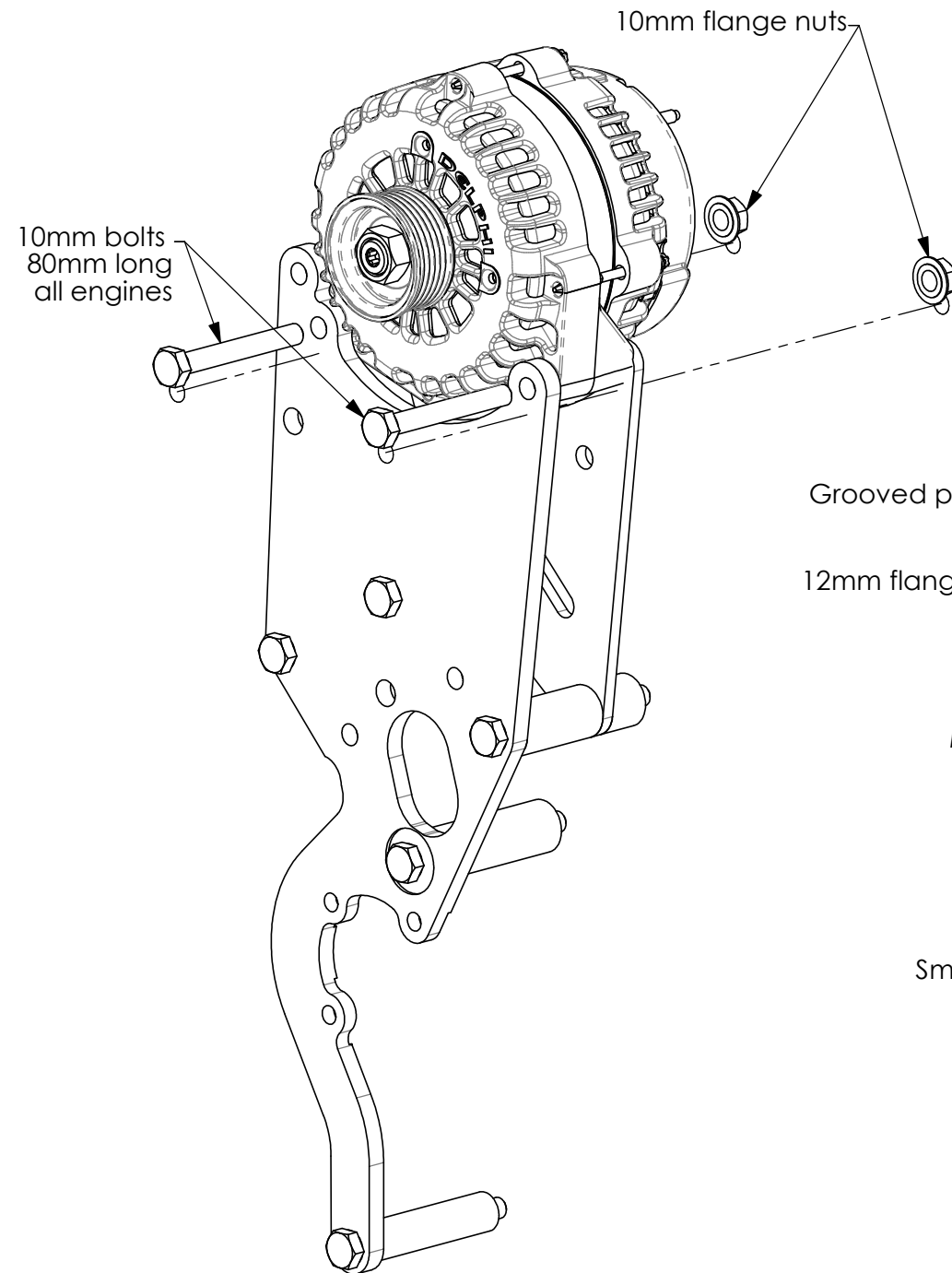
Leave all bolts finger tight to allow for adjustment

Two 10mm bolts screw into upper holes in head:
Corvette 80mm long
F-body 100mm long
Truck 120mm long



Installation Instructions for Alternator and PS pump high mount bracket for LS engines

3. Mount alternator

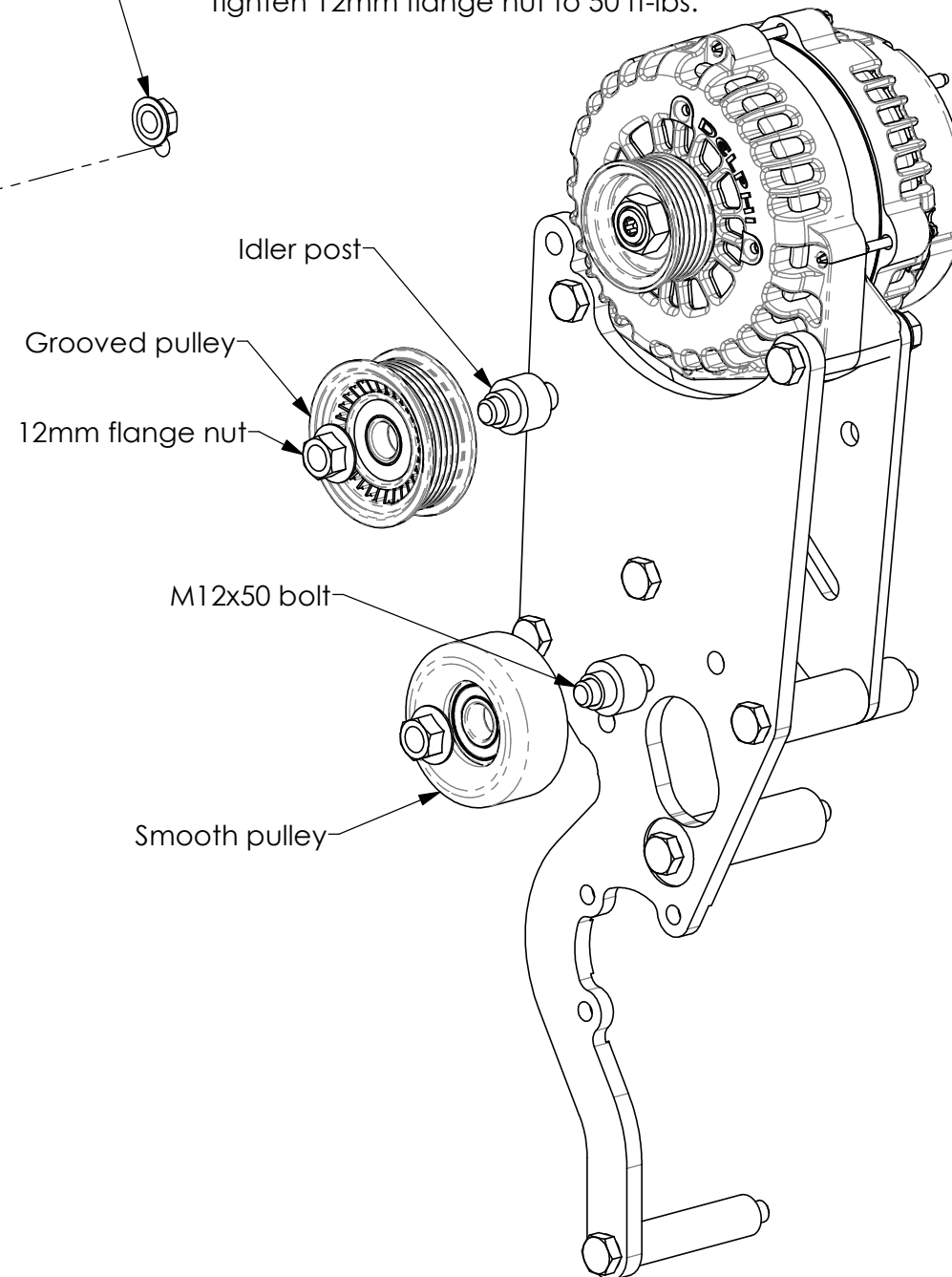


5. Install idler pulley

Choose desired setup:

- If using Kwik Performance AC bracket, install M12x50 bolt, idler post, **grooved** pulley, and 12mm flange nut in **upper** hole in front plate as shown.
- If not using AC, install M12x50 bolt, idler post, **smooth** pulley, and 12mm flange nut in **lower** hole in front plate as shown.
- Do not attempt to install both pulleys.

Tighten 12mm flange nut to 50 ft-lbs.



4. Tighten all seven 10mm bolts to 37 ft-lbs

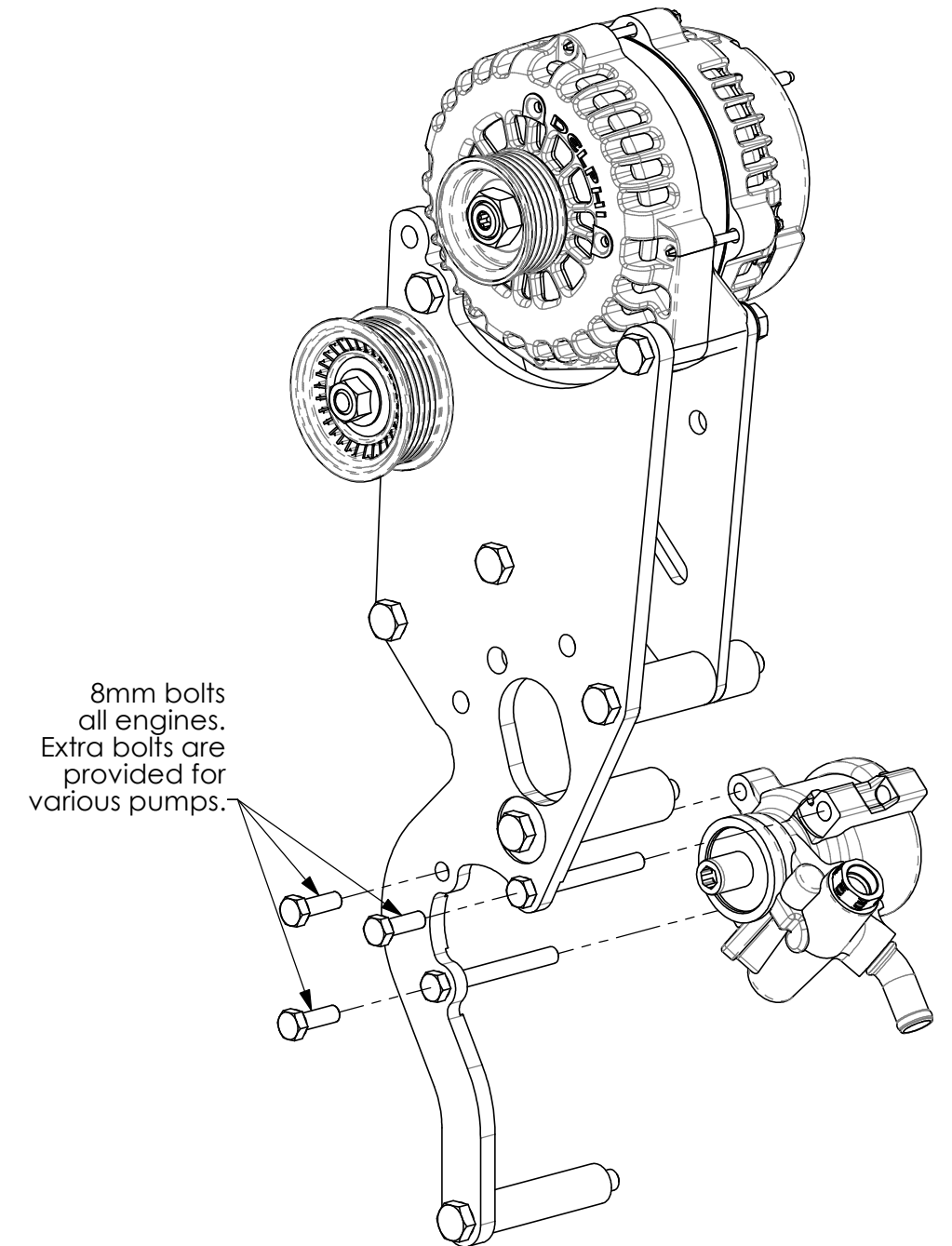
6. Mount power steering pump

Power steering pulley not shown.

Note: Pumps supplied by Kwik Performance have pulleys preinstalled that have windows in them for access to 8mm bolts. Pulley and pump can be installed as an assembly.

Most pumps will be installed using three M8x25 bolts that screw into the pump housing. Some pumps use two M8x75 bolts with two 8mm plain nuts.

Tighten 8mm bolts to 15 ft-lbs. **Do not overtighten.**

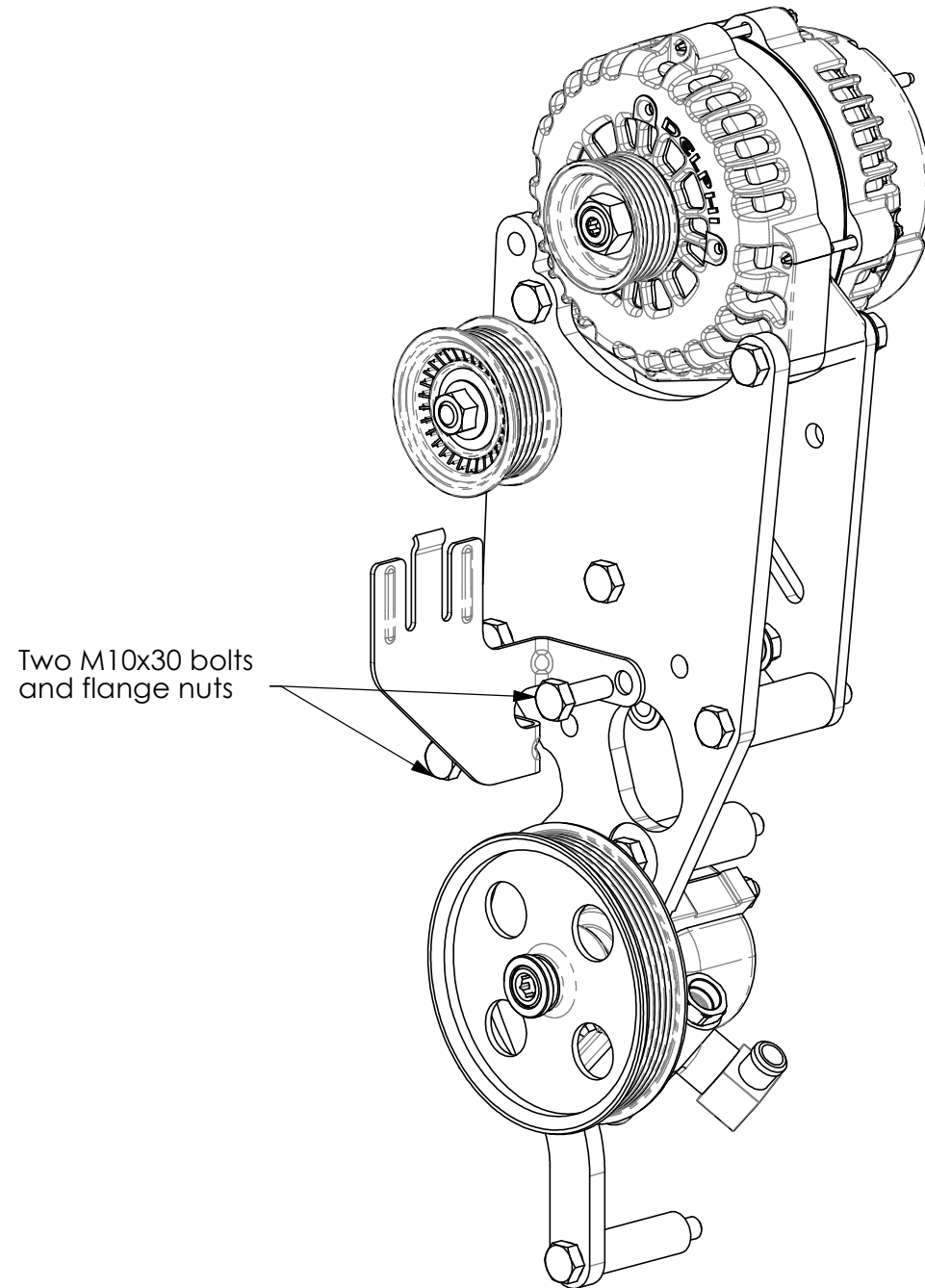


7. Install belt

See sheet 1 for belt routing and suggested length.

Installation Instructions for optional power steering reservoir and feed hose

1. Attach reservoir bracket



2. Attach feed hose and upper hose clamp to reservoir.

Hose clamp screw is oriented down, away from front plate.

3. Attach reservoir and hose to bracket

Feed the hose through the oval hole in the front plate, then snap the reservoir onto the bracket.

Trial fit the hose onto the pump, then cut to length if necessary to prevent it from rubbing on something.

Attach hose and lower clamp to pump.

Tighten 10mm flange nuts to 37 ft-lbs.

