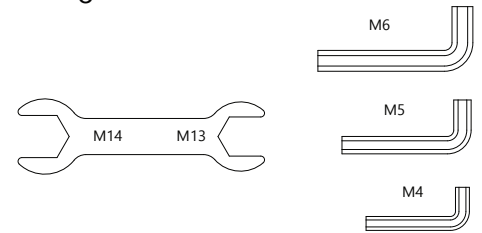
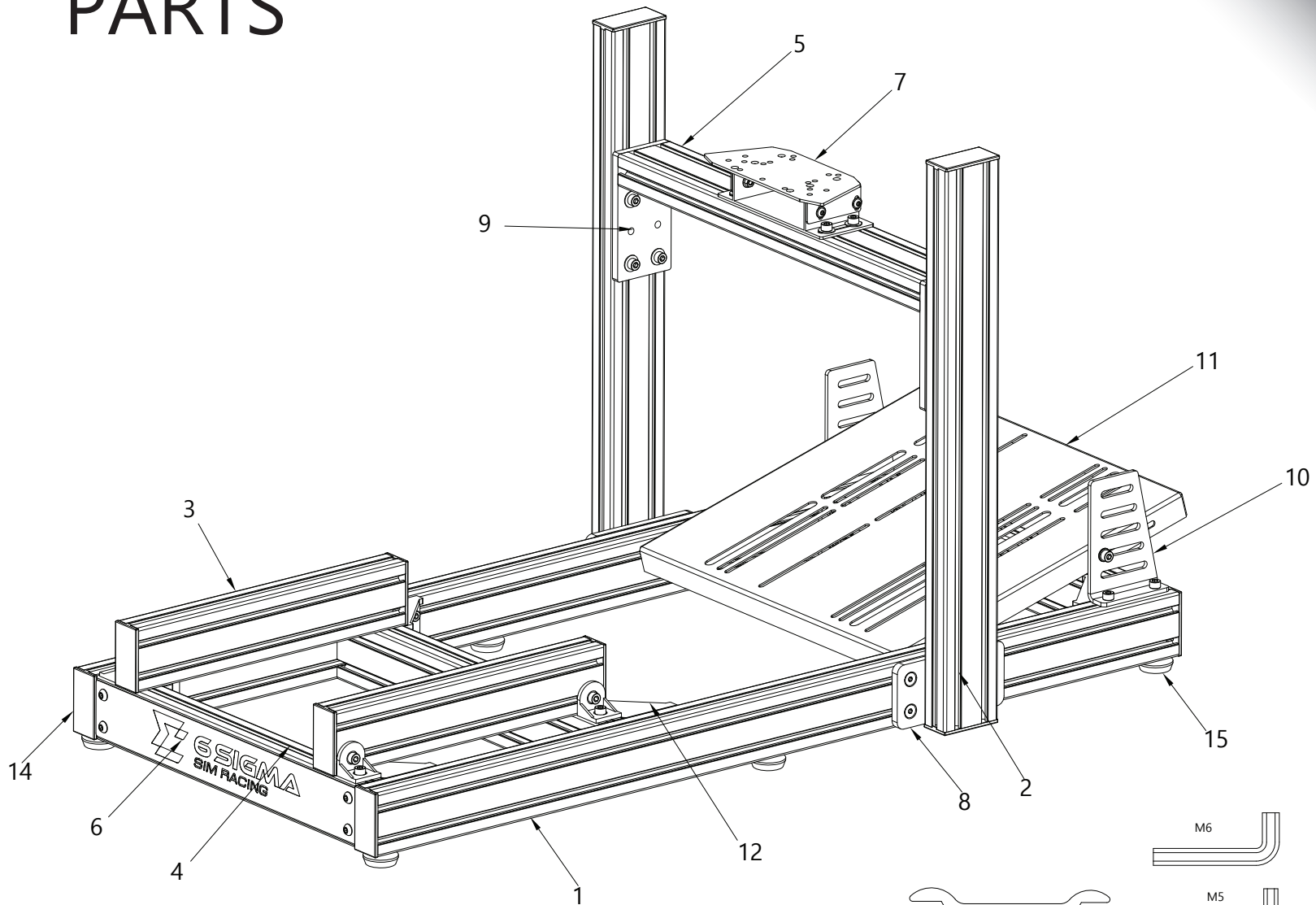


6S-80

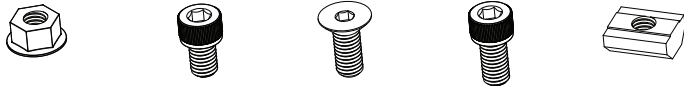
Assembly Documentation



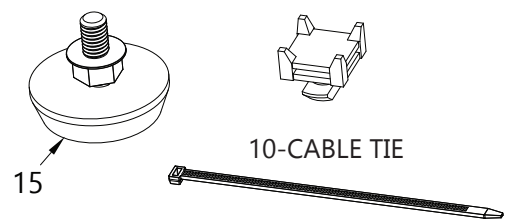
PARTS



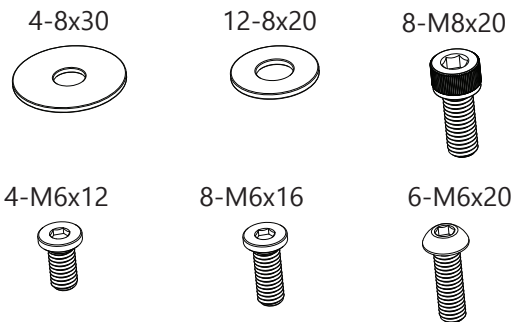
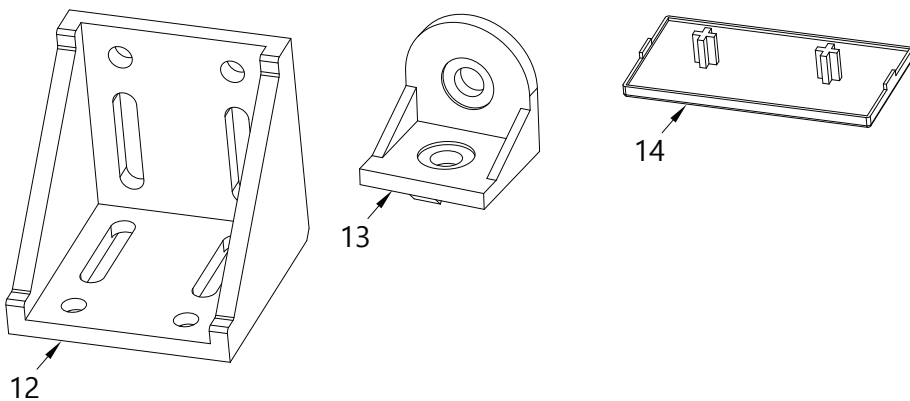
2-M8 NUT 4-M8x12 20-M8x20 68-M8x16 100-M8 T-NUT

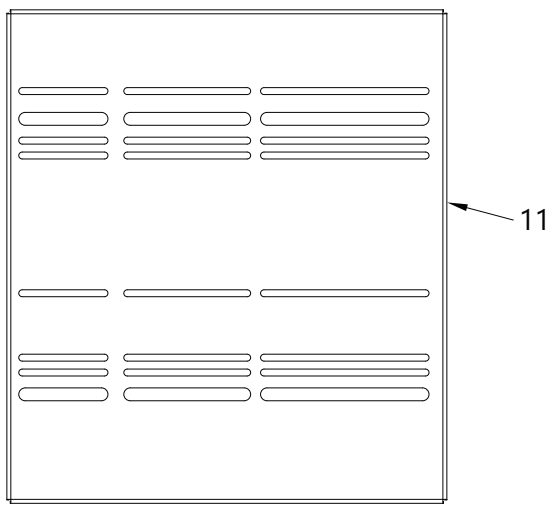
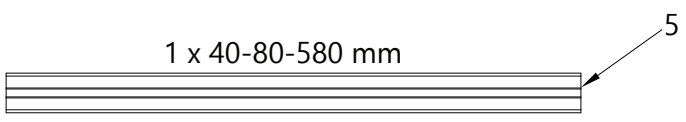
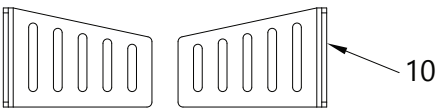
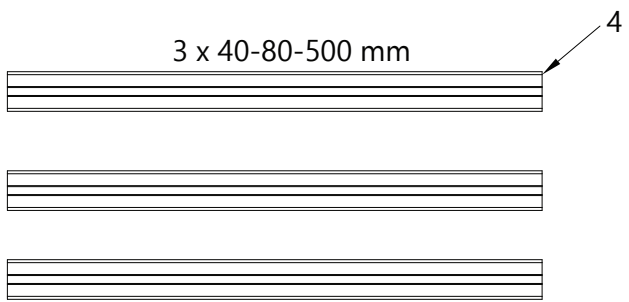
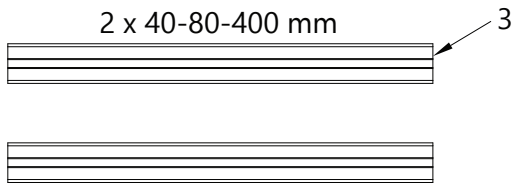
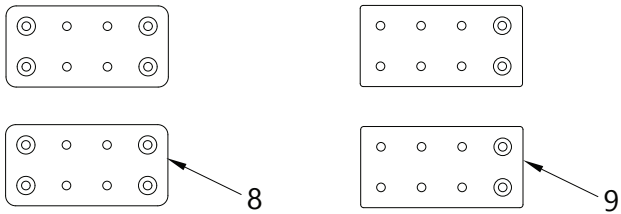
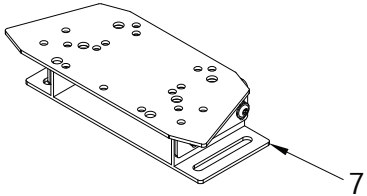
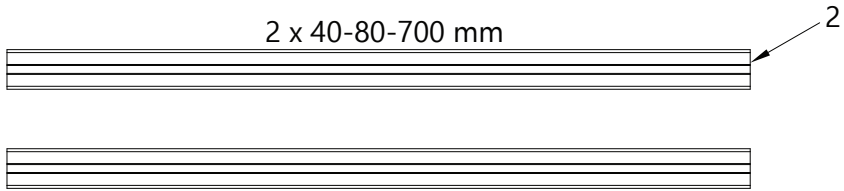
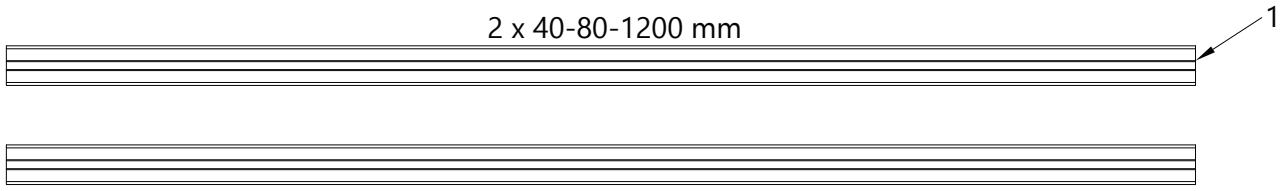


6-FOOT PAD 10-TIE DOWN



6-80x80 ANGLE 4-40x40 ANGLE 12-40x80 CAP





NOTES

Safety First

Be mindful of any sharp edges. Use safety goggles whenever removing tabs from angle brackets.



Protect From Scratches

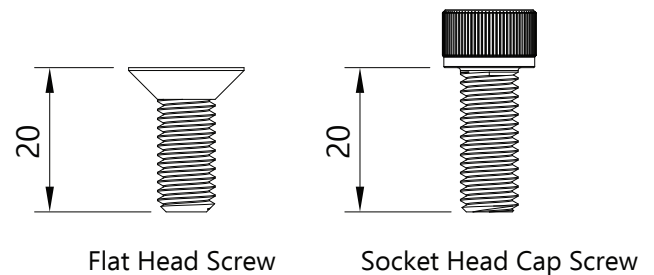
Hard surfaces can damage the surfaces of the aluminum extrusions.

Use a towel or blanket when assembling on hard surfaces to protect the finishes.

How to measure screws

Flat head screws are measured based on their overall length.

Socket head cap screws are measured based on the length under the head of the screw.



Metric Conversions

25.4 mm = 1"

16 mm = 5/8"

20 mm = 25/32"

320 mm = 12 9/16"

400 mm = 15 3/4"

500 mm = 19 11/16"

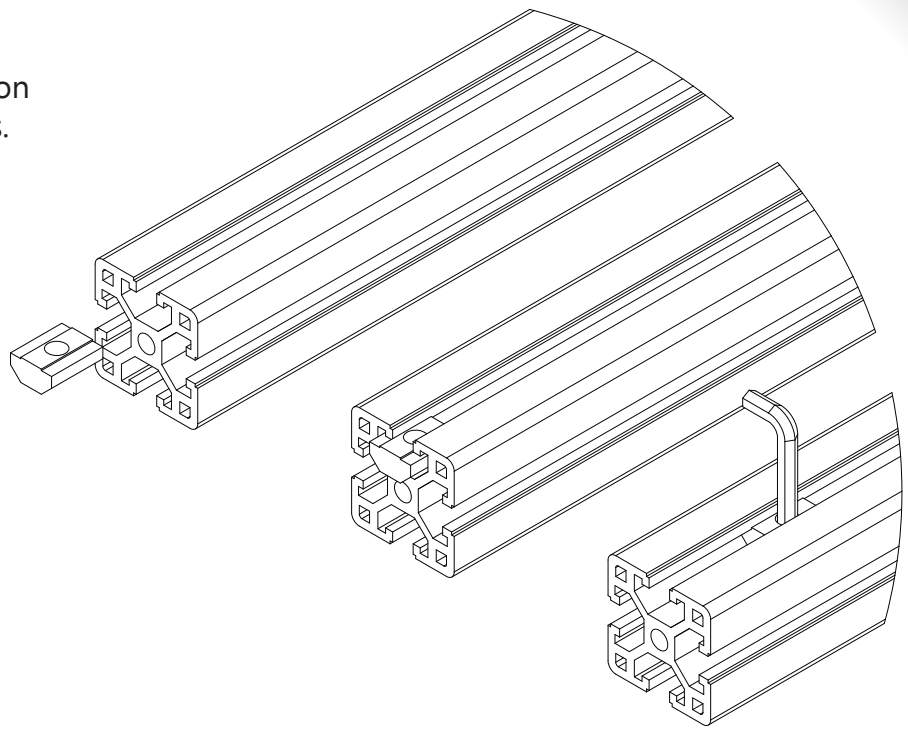
580 mm = 22 13/16"

700 mm = 27 9/16"

1200 mm = 47 1/4"

T-Nut Installation

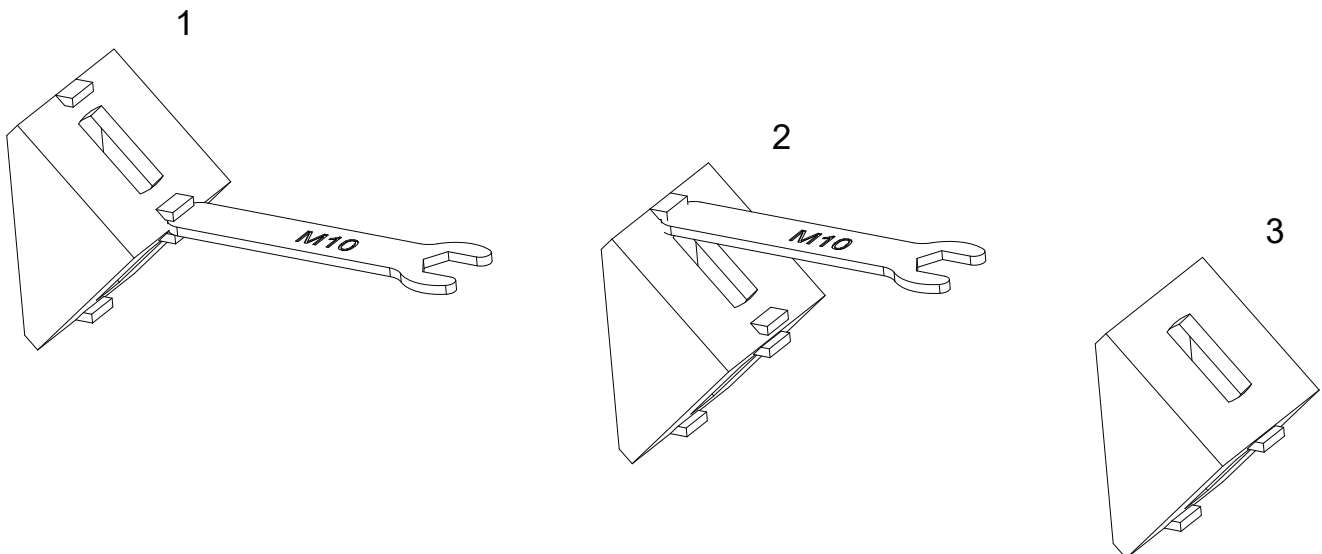
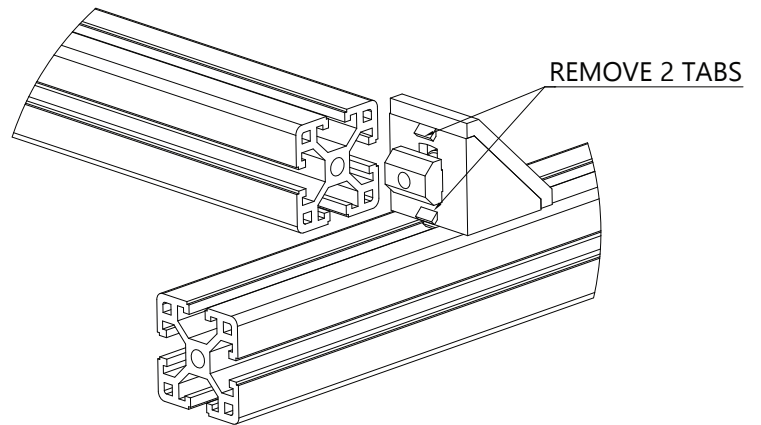
Be mindful of the order of installation and plan out the insertion of T-nuts.



Alignment Tab Removal

Tabs on brackets may need to be removed if they interfere with the installation of an extrusion as shown to the right.

2 - tabs need to be removed from 4 brackets



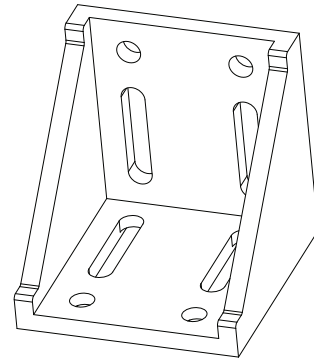
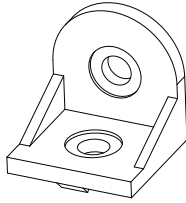
STEP 1

4-40x40 ANGLE

56-M8 T-NUT

56-M8x16

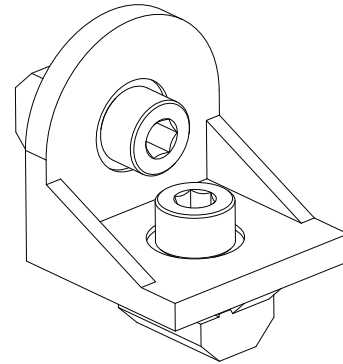
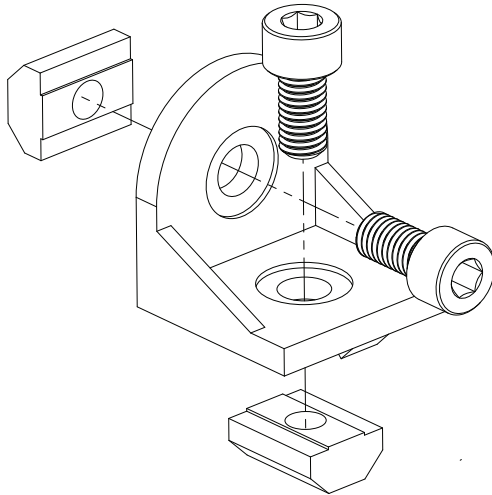
6-80x80 ANGLE



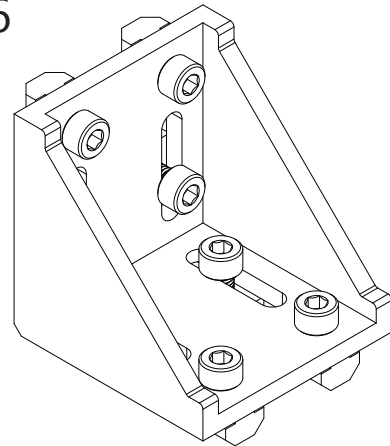
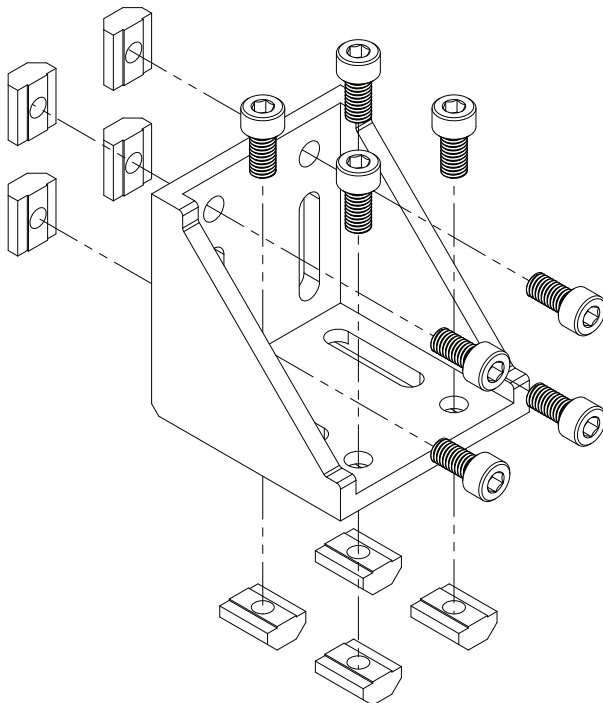
NOTE:

Leave screws loose enough to slide the T-Nuts into the aluminum extrusion profiles.

x 4

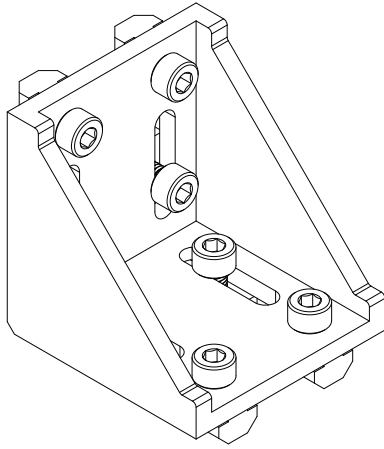


x 6

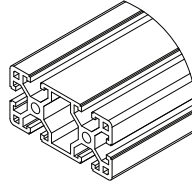


STEP 2

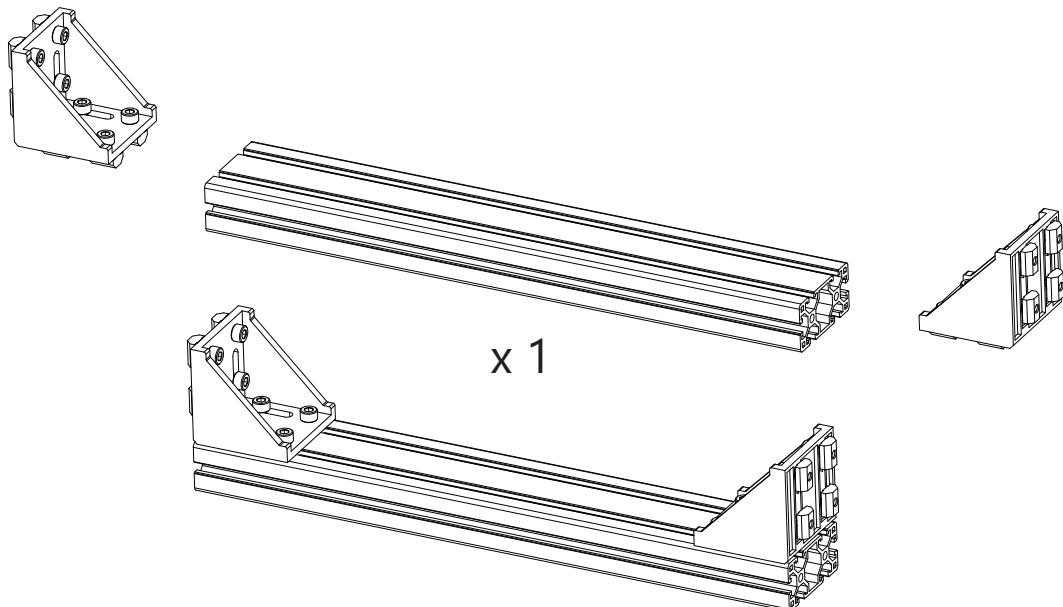
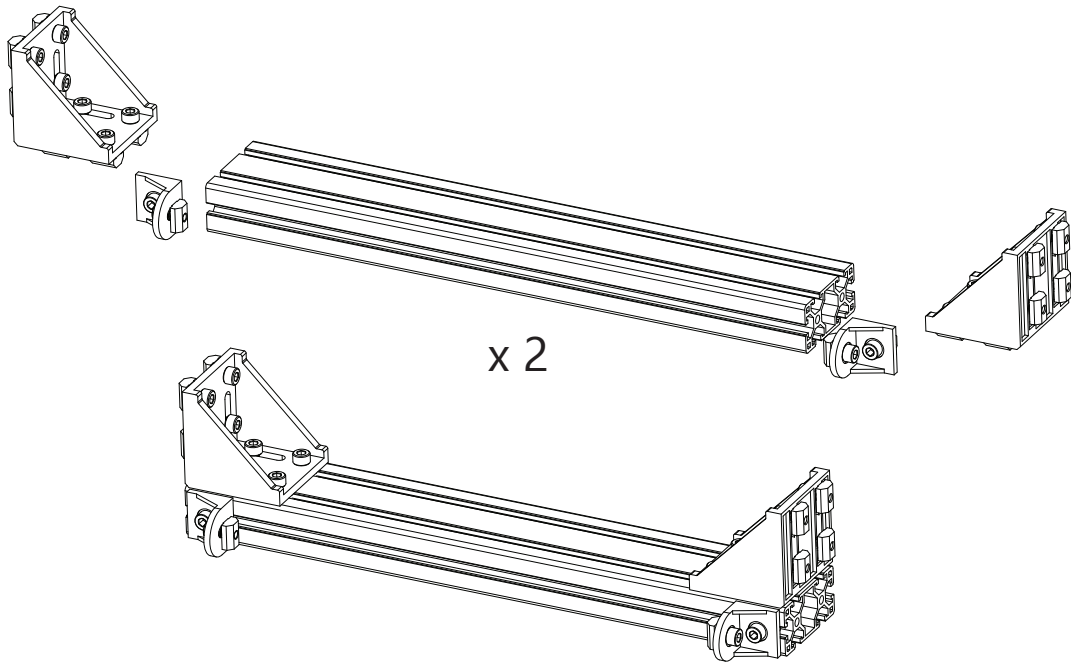
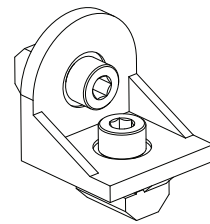
6-80x80 BRACKET



3-40x80x500

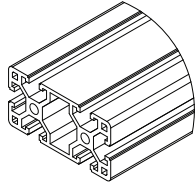


4-40x40 ANGLE

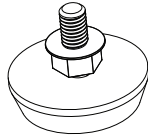


STEP 3

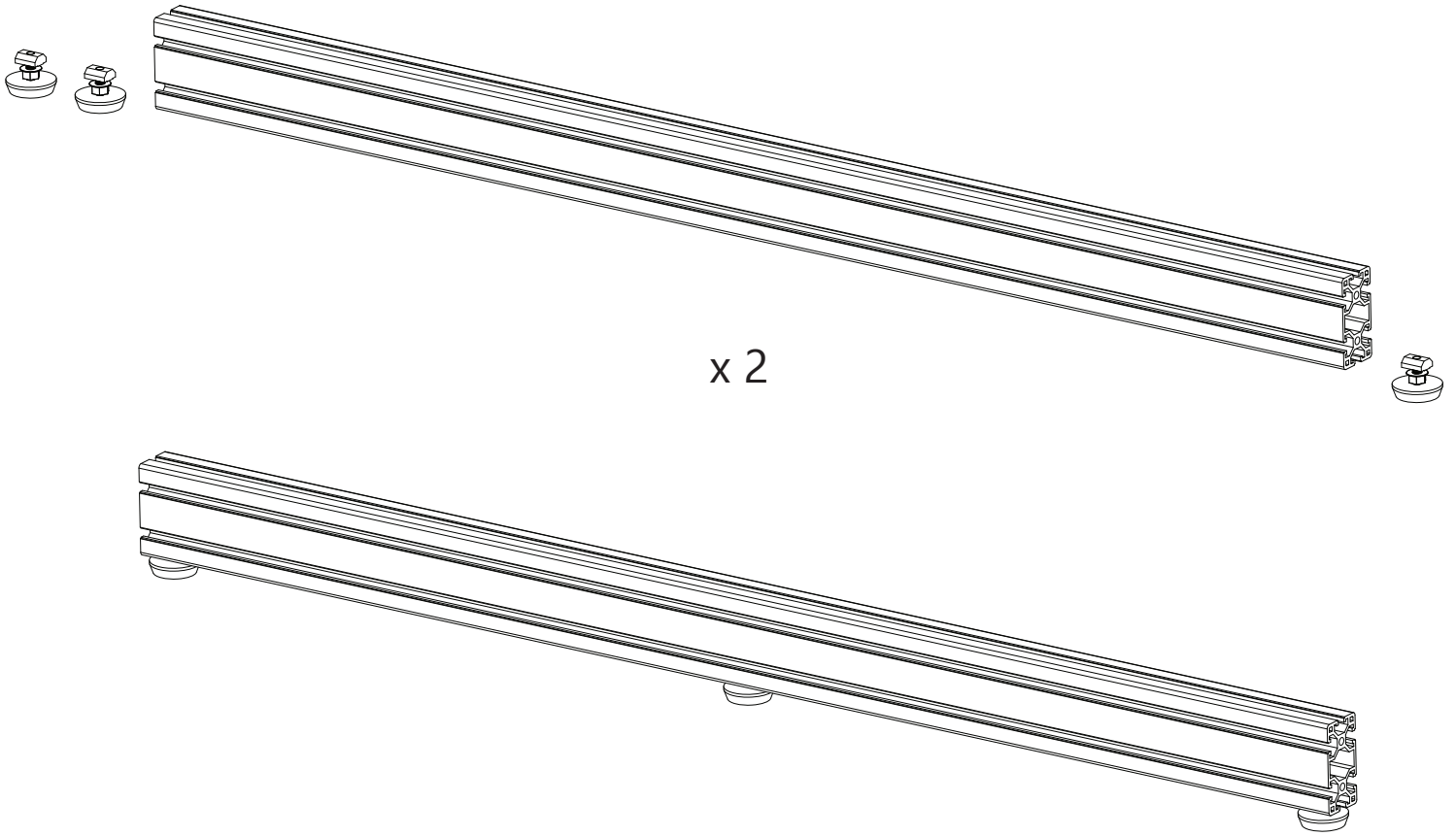
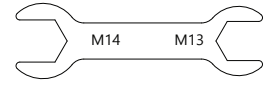
2-40x80x1200



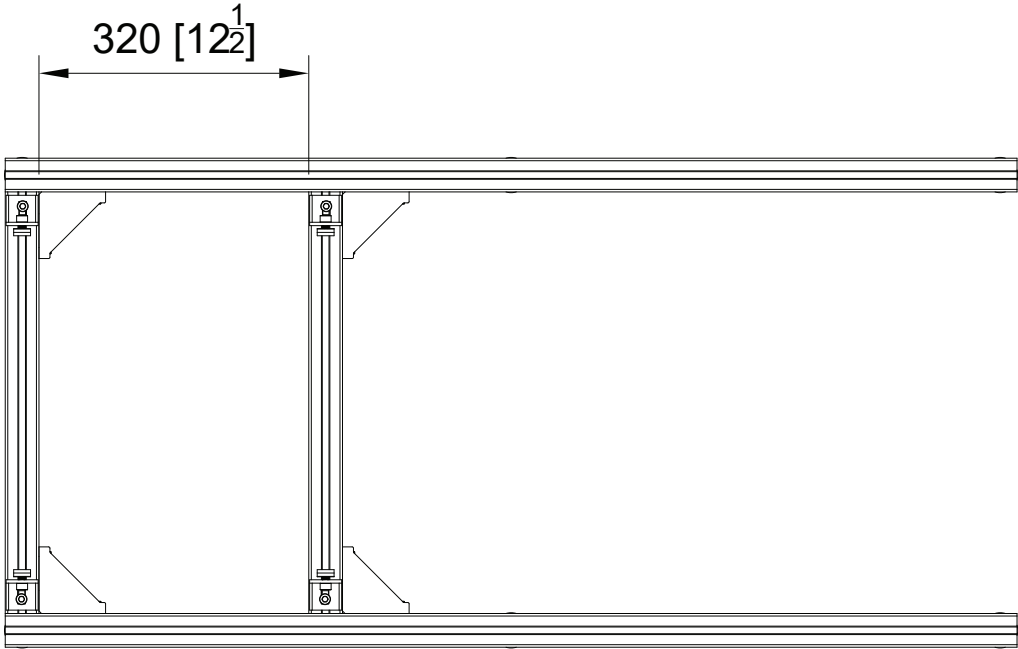
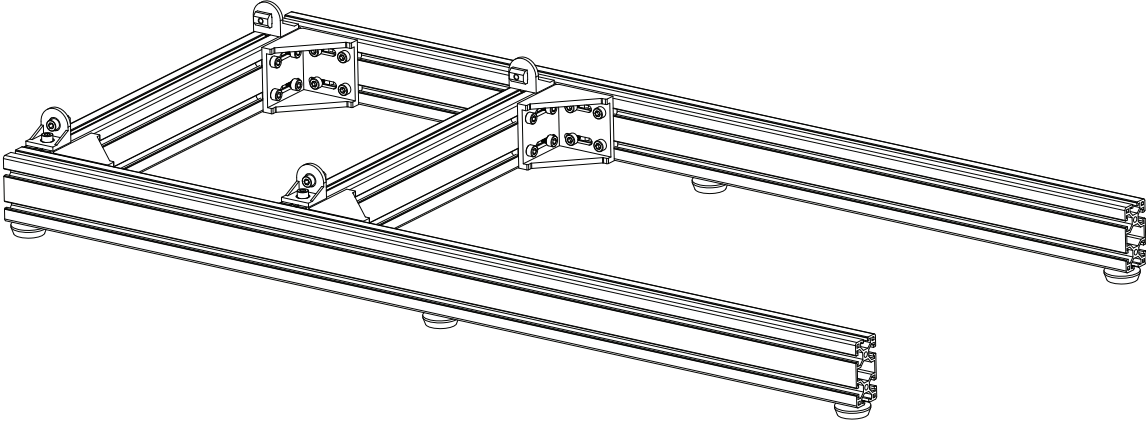
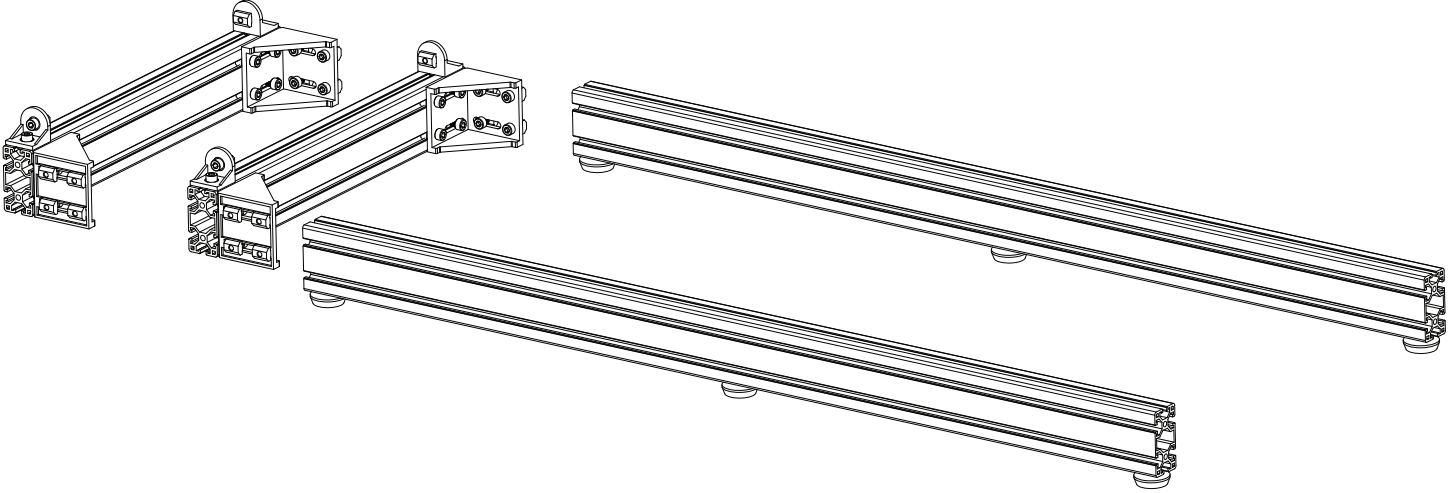
6-FOOT PAD



6-M8 T-NUT

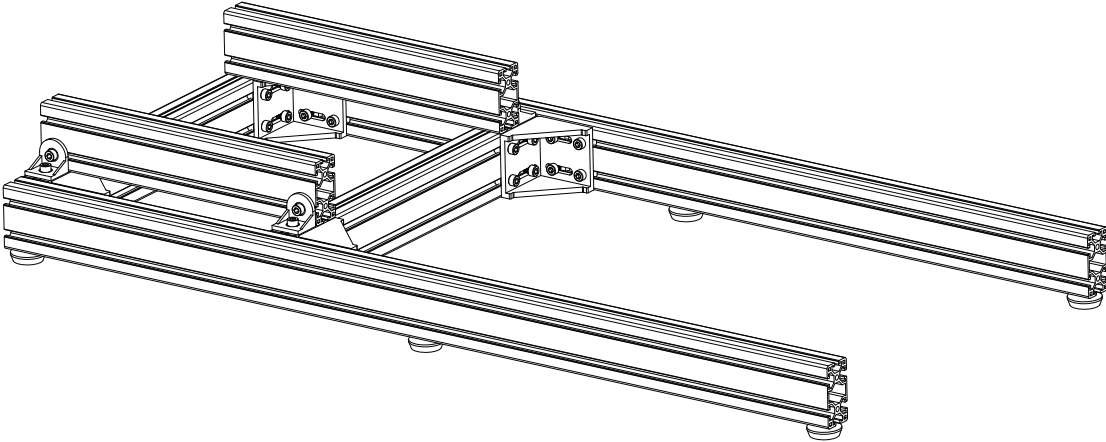
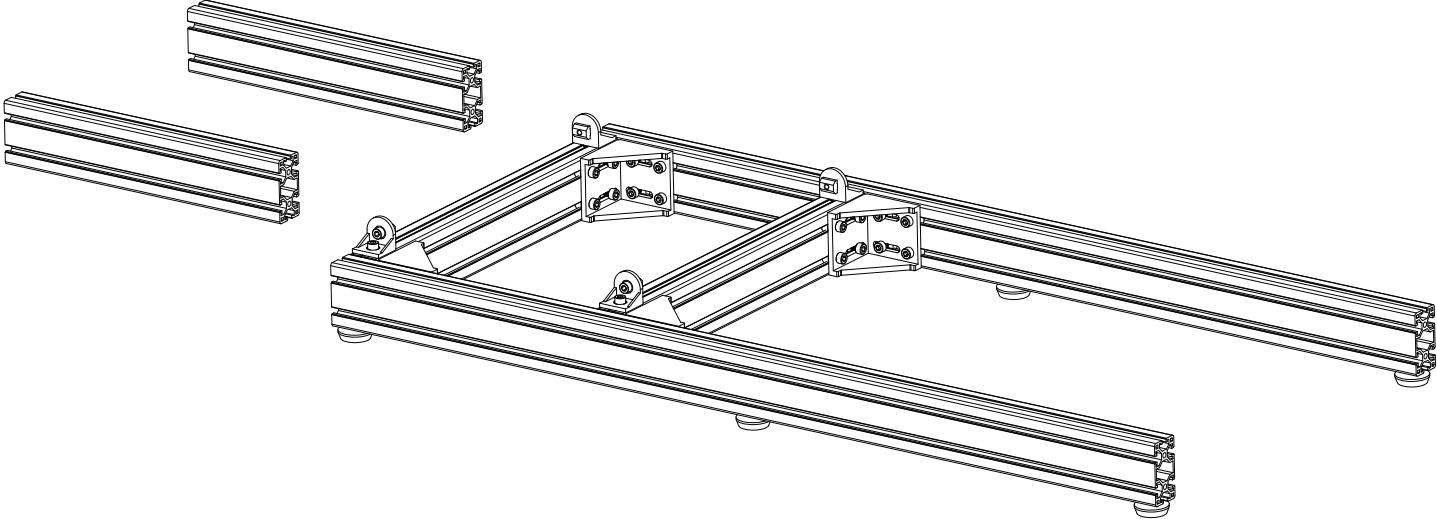
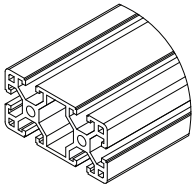


STEP 4



STEP 5

2-40x80x400



STEP 6

2-M8 NUT



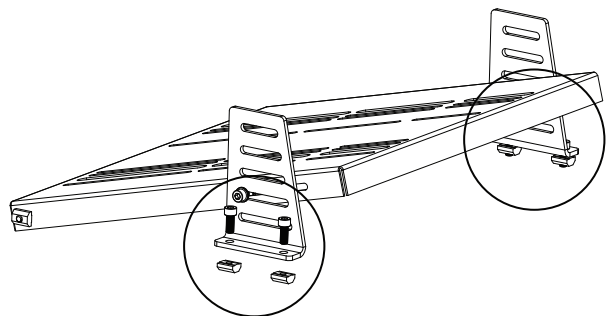
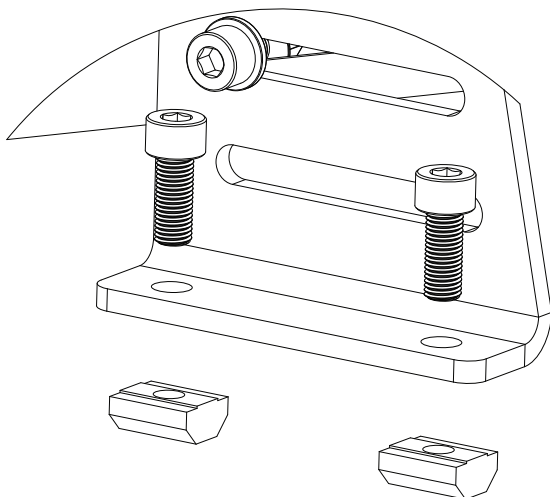
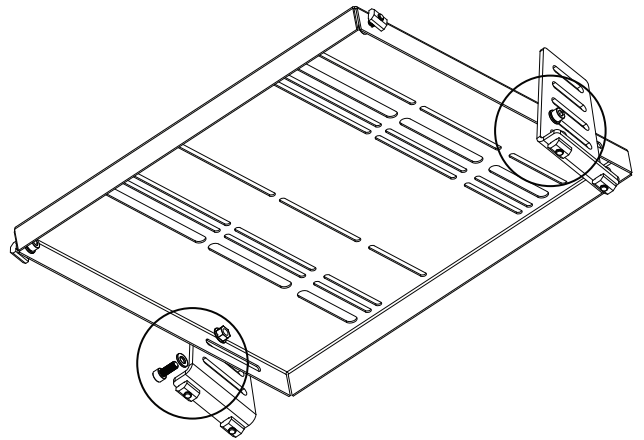
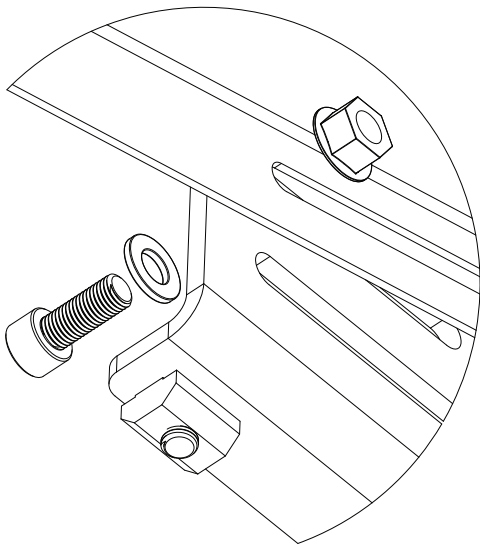
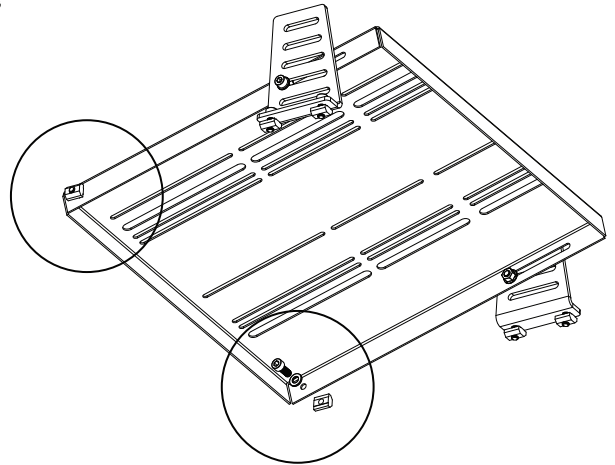
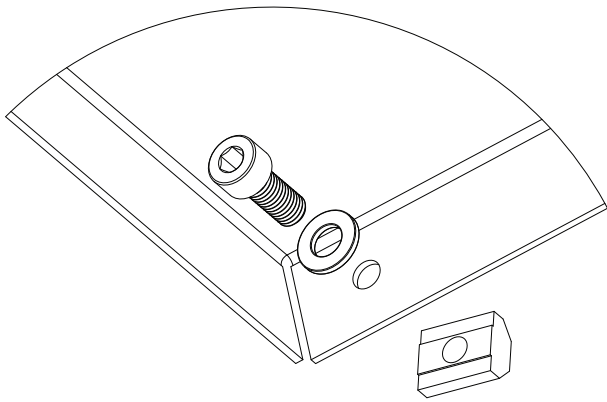
8-M8 T-NUT



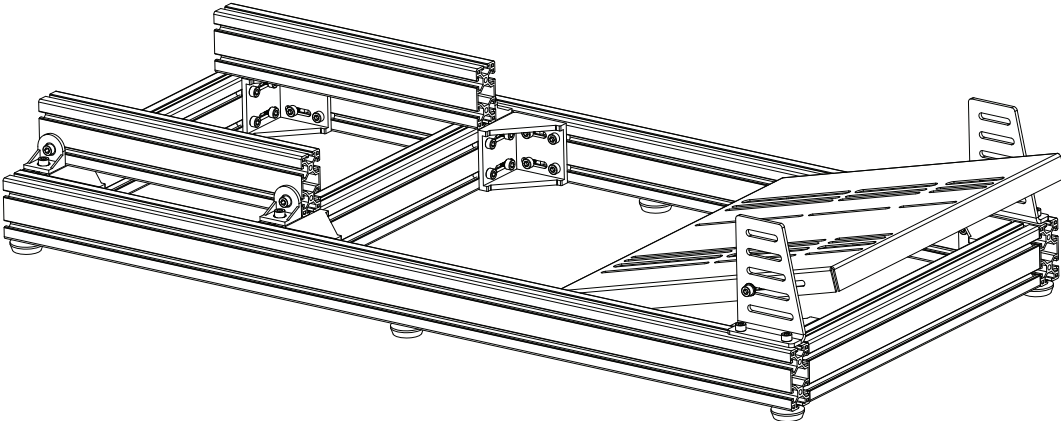
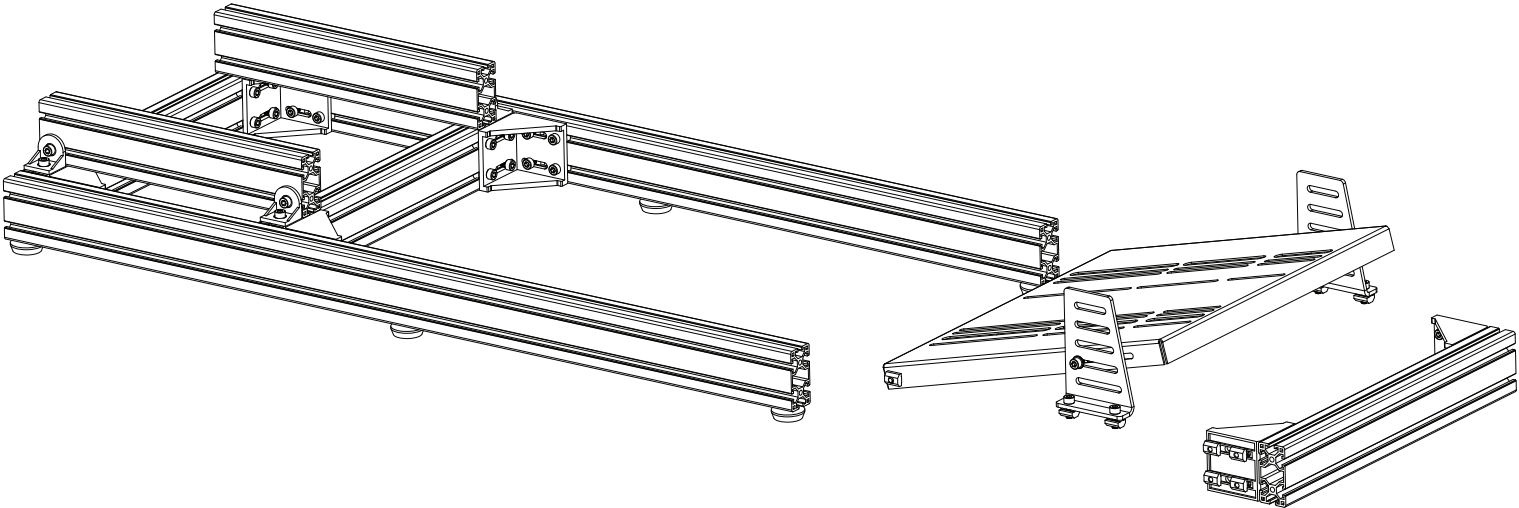
8-M8x20



4-8x30

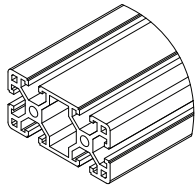


STEP 7



STEP 8

2-40x80x700



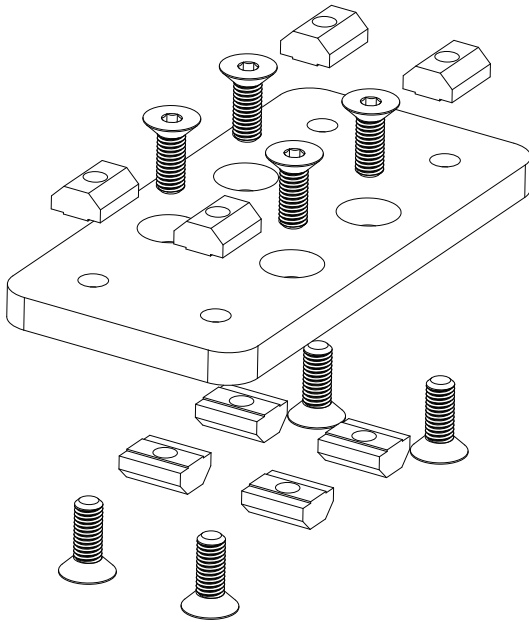
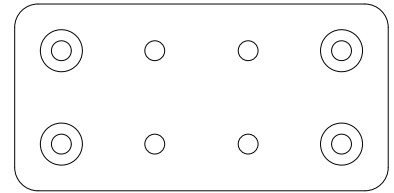
16-M8 T-NUT



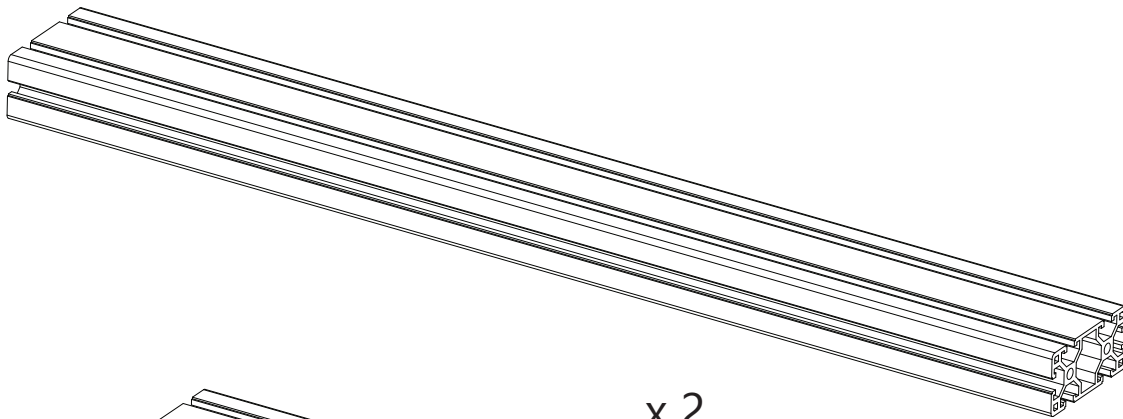
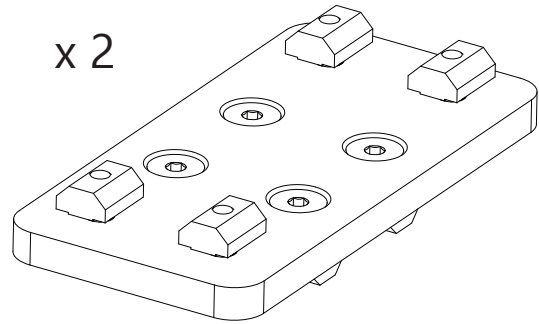
16-M8x20



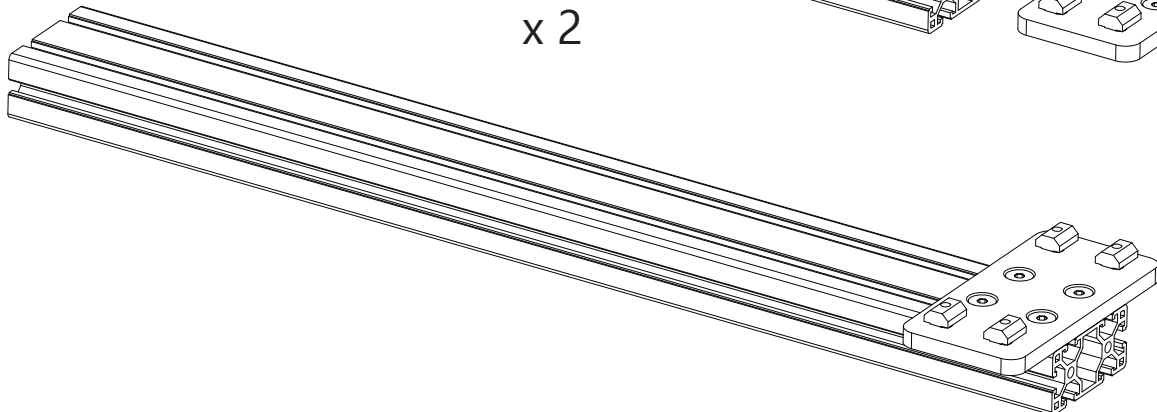
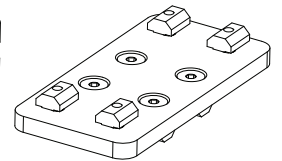
2-MOUNTING PLATE



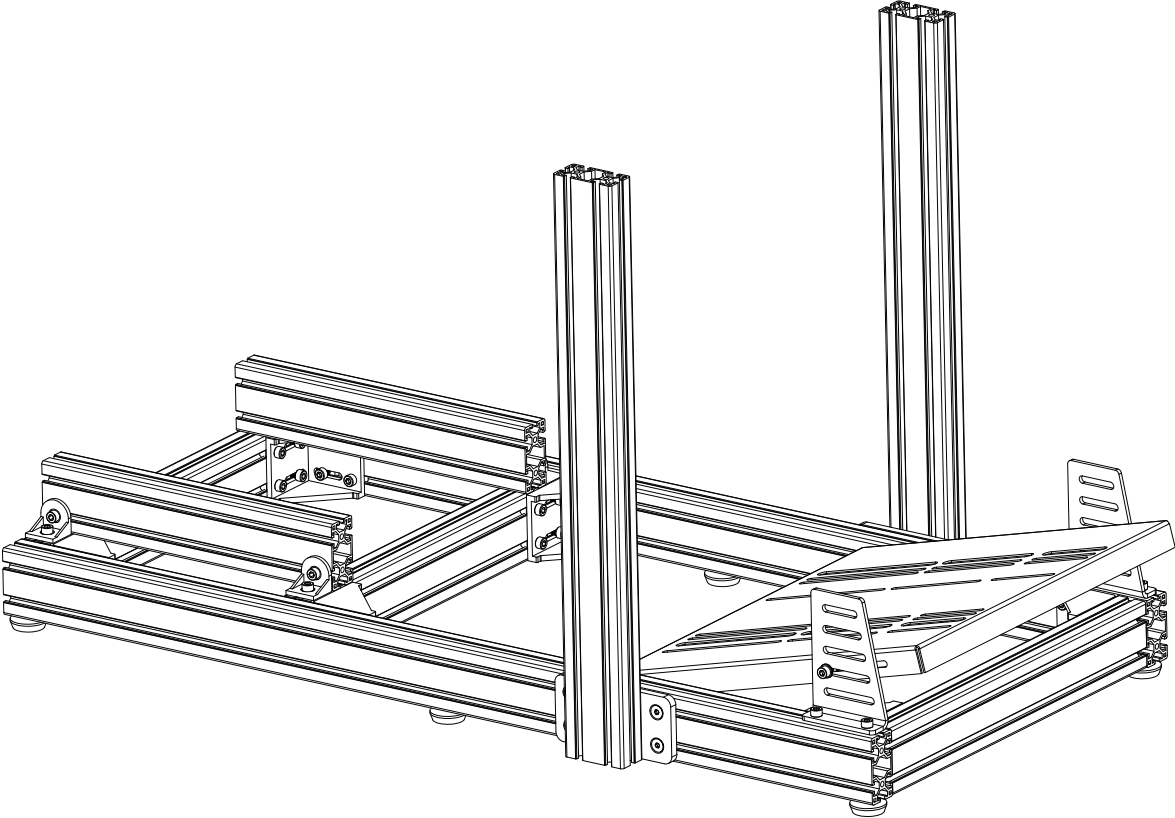
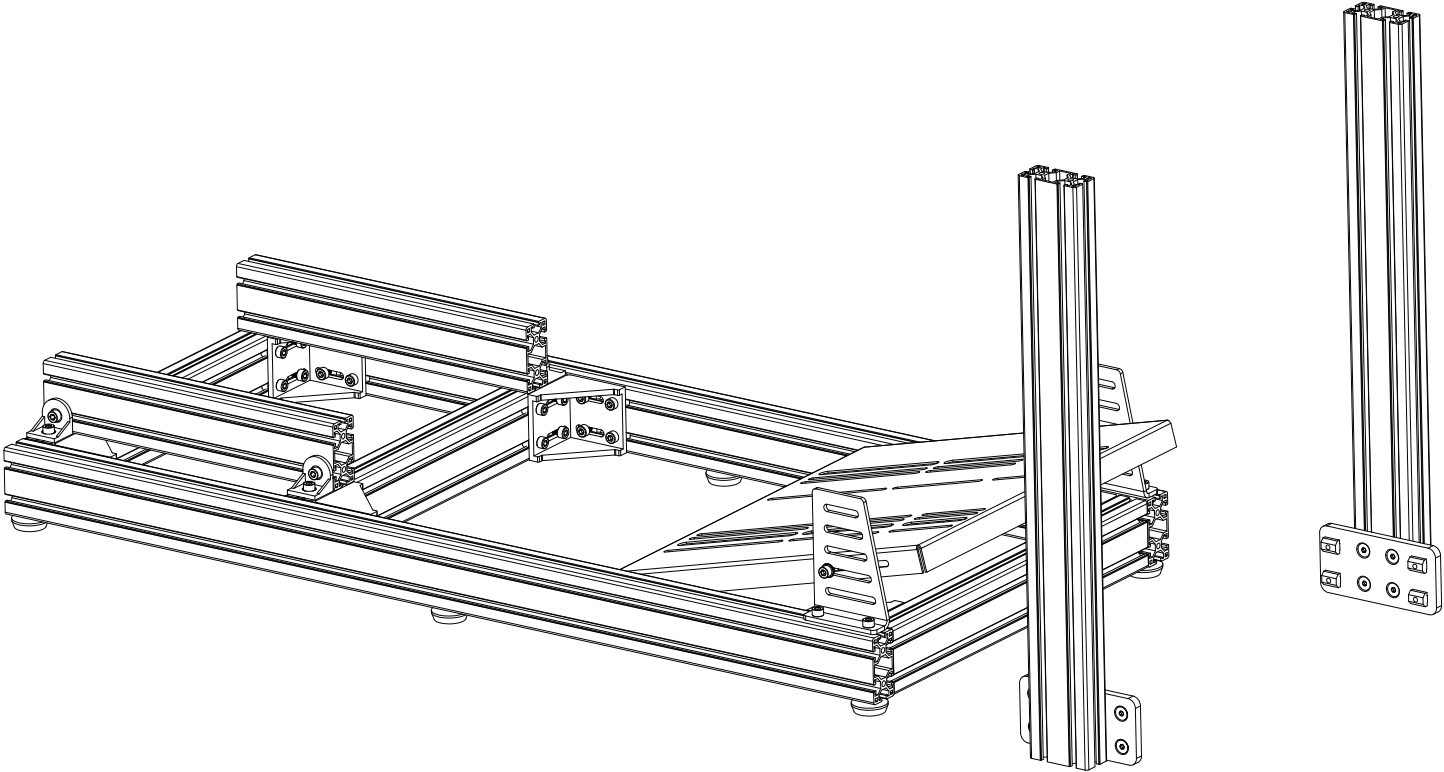
x 2



x 2

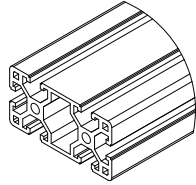


STEP 9



STEP 10

1-40x80x580



12-M8 T-NUT



4-M8x20



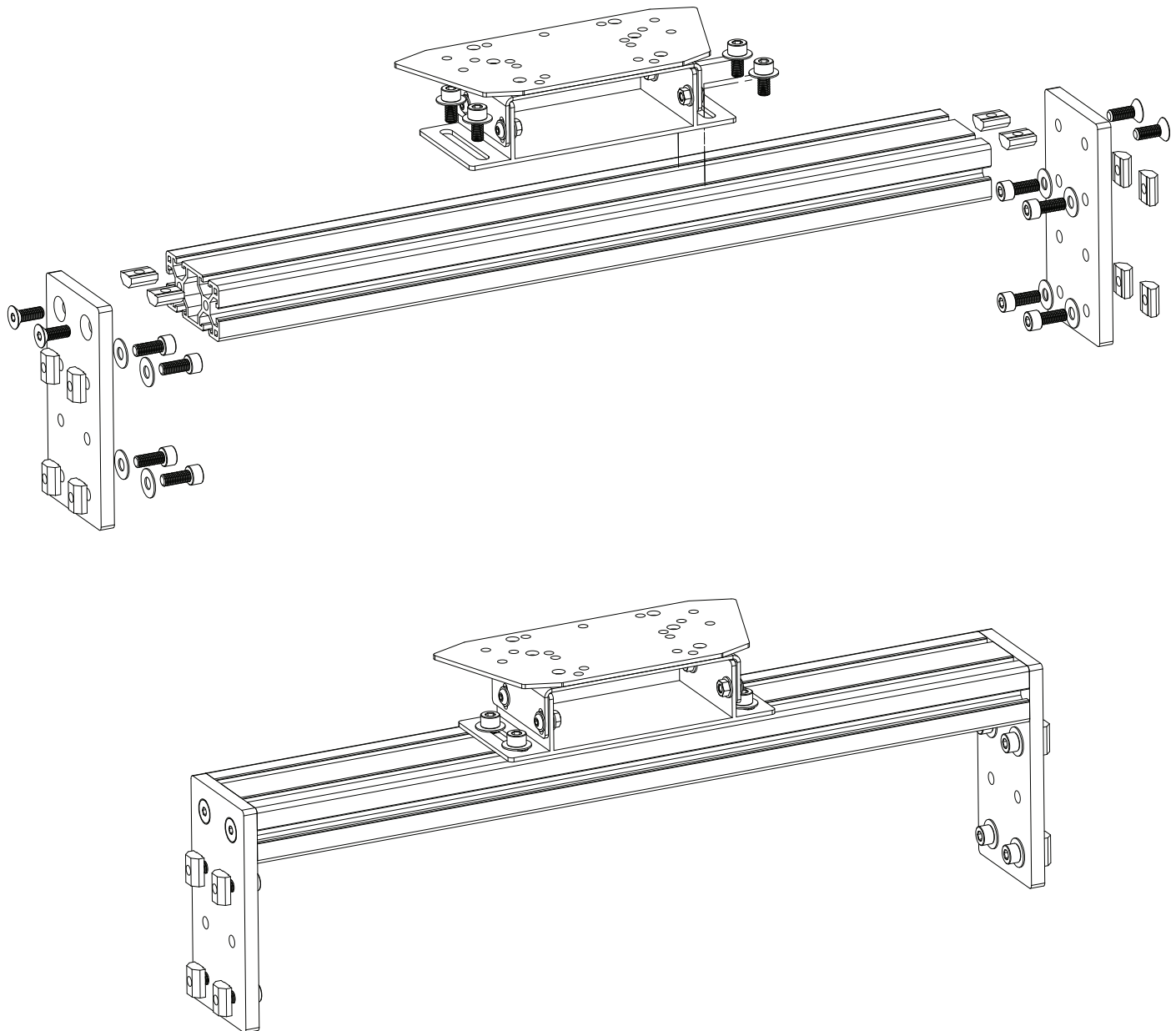
12-8x20



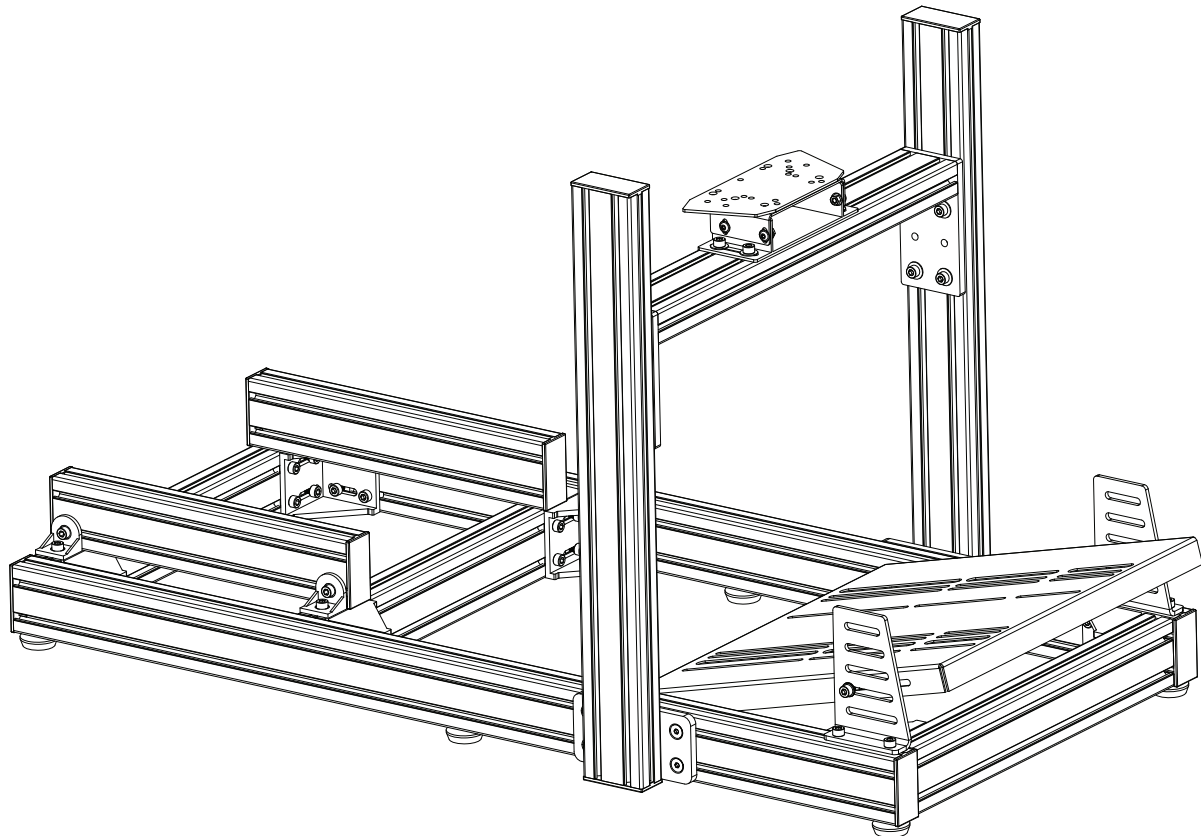
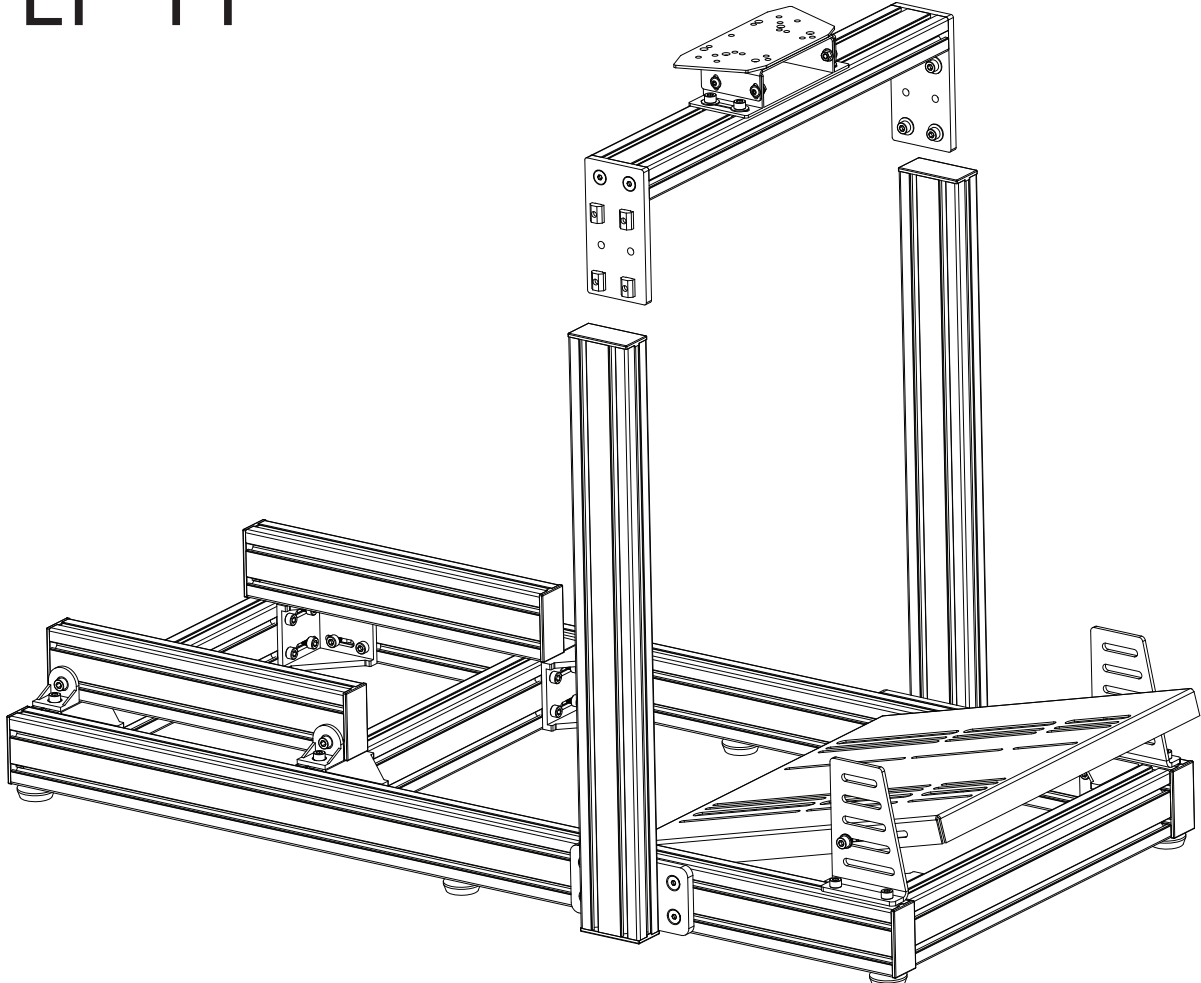
4-M8x12



8-M8x20

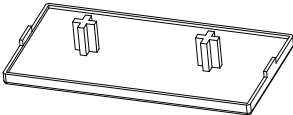


STEP 11



STEP 12

12-40x80 CAP



1 - LABEL PLATE

