

2005-10 FERRARI F430 XB LED TAIL LIGHT INSTALL GUIDE

WARNING: By reading this document, you agree it is only to be used as an educational guide. Morimoto Lighting nor its dealers make guarantees on any finished results, nor are they to be held responsible for any damage, misuse, or personal injuries. If you are unable to clearly understand and adapt the information below, professional installation is recommended.

PACKAGE CONTENTS



2X TAIL LIGHT ASSEMBLIES



**2 X US SPEC ADAPTOR
HARNESS**



**2 X EURO SPEC ADAPTOR
HARNESS
(SOLD SEPERATELY)**



**2 X MAGNET MOUNT
RESISTERS**



16 X THUMB NUTS

IMPORTANT: If your vehicle is equipped with anything but OEM turn signals (full assemblies, LED bulbs, or otherwise) in the headlights or elsewhere: You may experience a hyper flash and/or problem with the sequential signal setting on these tail lights. This is not a defect in the tail light, and caused by un-matched impedance with your original vehicle settings.

2005-2010 FERRARI F430



REQUIRED TOOLS

- RATCHET
- 10MM SOCKET
- 3MM ALLEN KEY
- 4MM ALLEN KEY

INSTALLATION PROCESS

1. Open your engine hood. Remove three (3) 4mm Allen bolts on the top of the rear cover panels (circled in red). Also remove two (2) 3mm Allen bolts holding the bottom of the cover panels (circled in green).



PASSENGER SIDE

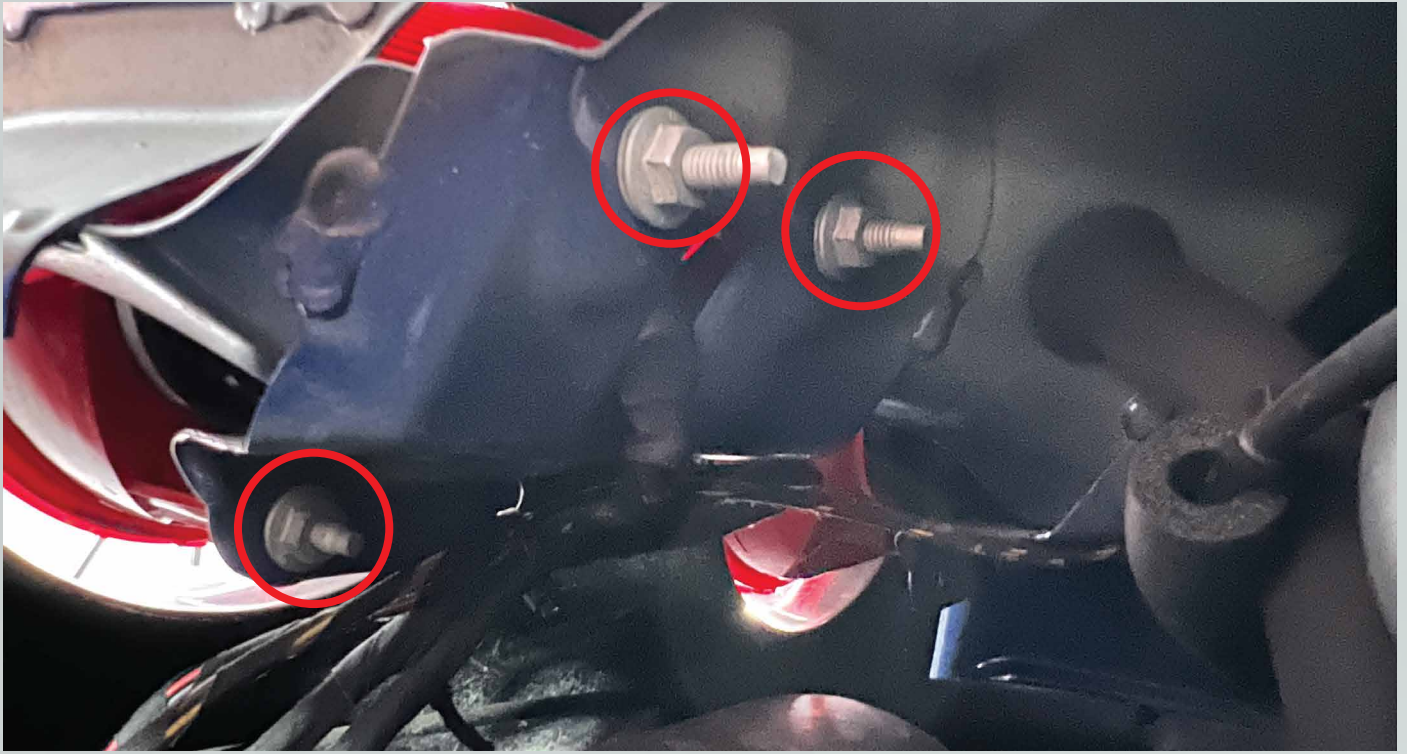


DRIVER SIDE

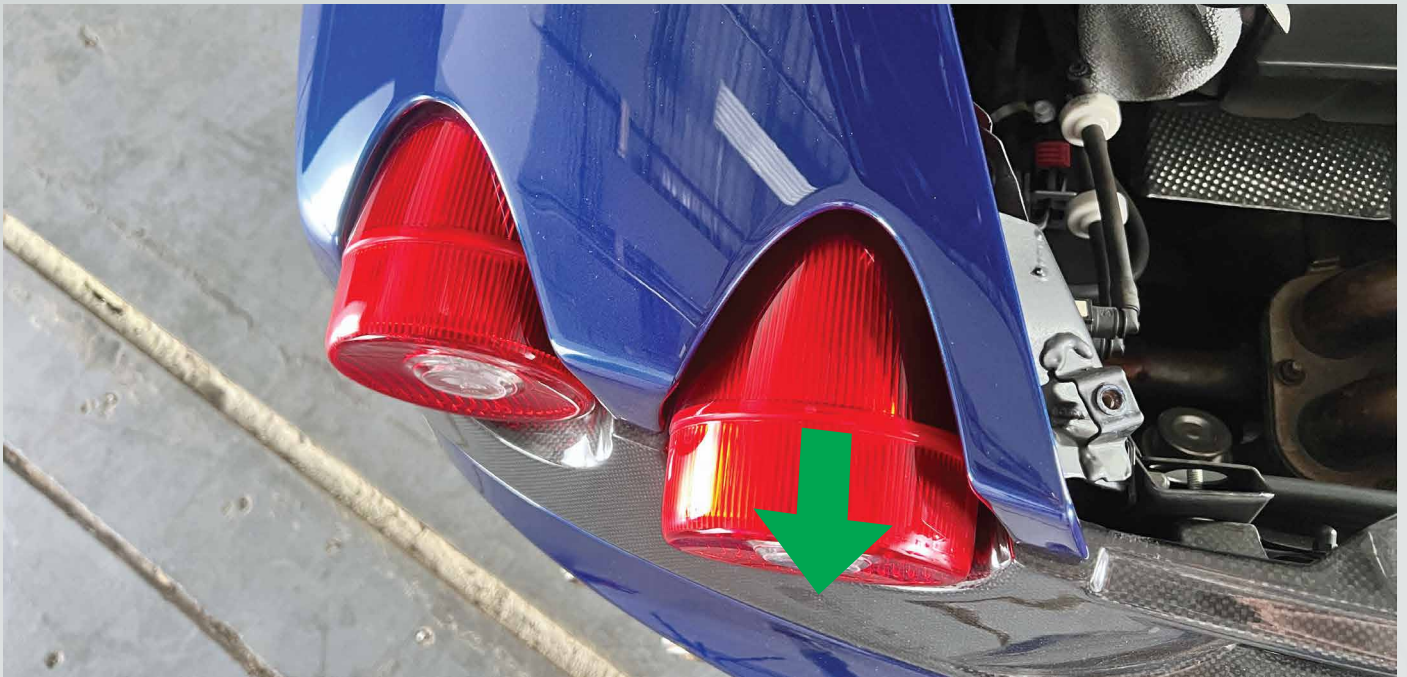
2. To remove the passenger side cover panel, first pull the panel away from the body of the car, then pull the panel up and out of the car. On the driver side pull the panel away from the body then swing the panel to the side.



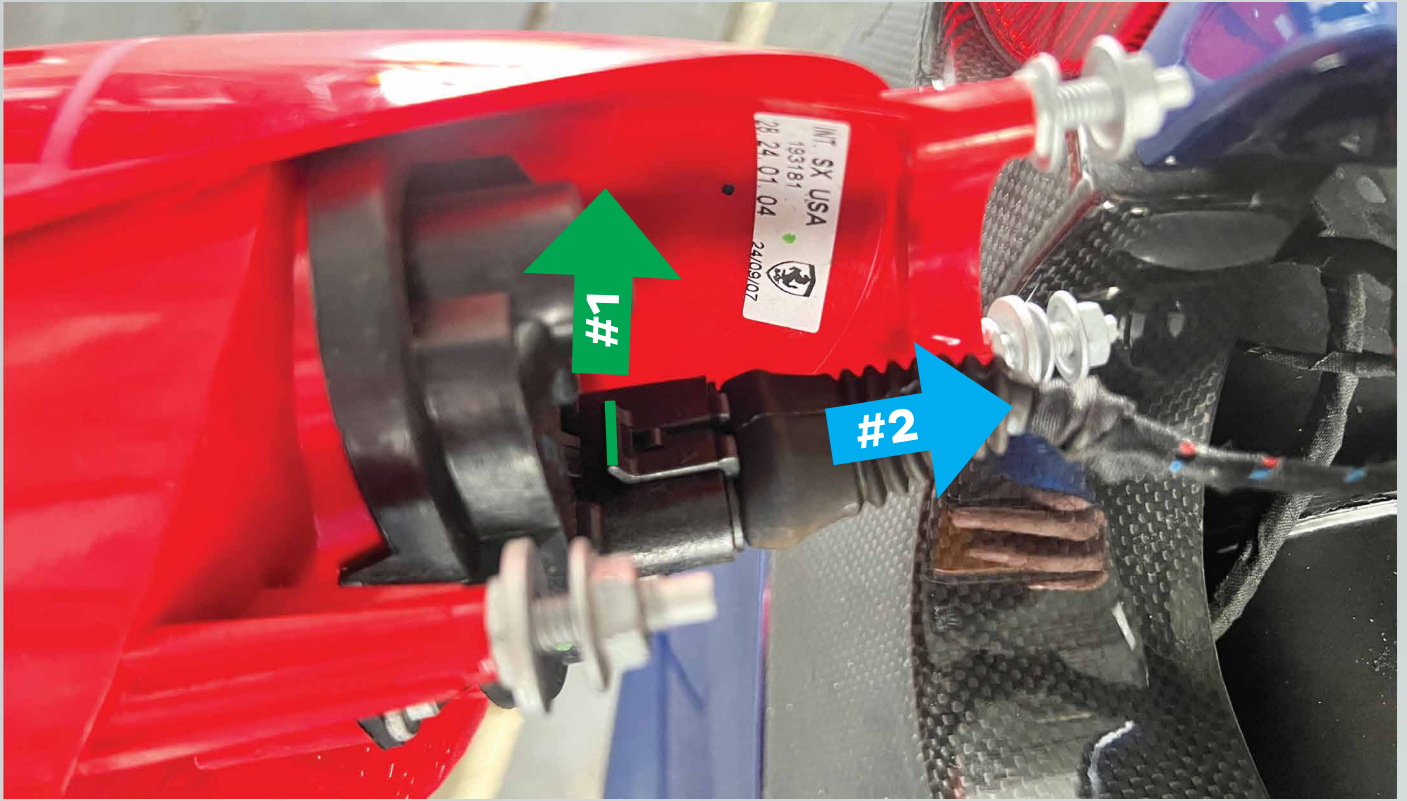
3. Starting with one tail light, remove three (3) 10mm nuts and washers.



4. Slide the tail light out.



5. Unplug the connector from the tail light. Do this by pulling the release tab up (#1) then sliding the connector away from the tail light (#2).



6. Route the connector and wiring through the hole in the body of the car so that the connector is accessible from inside of the engine bay.

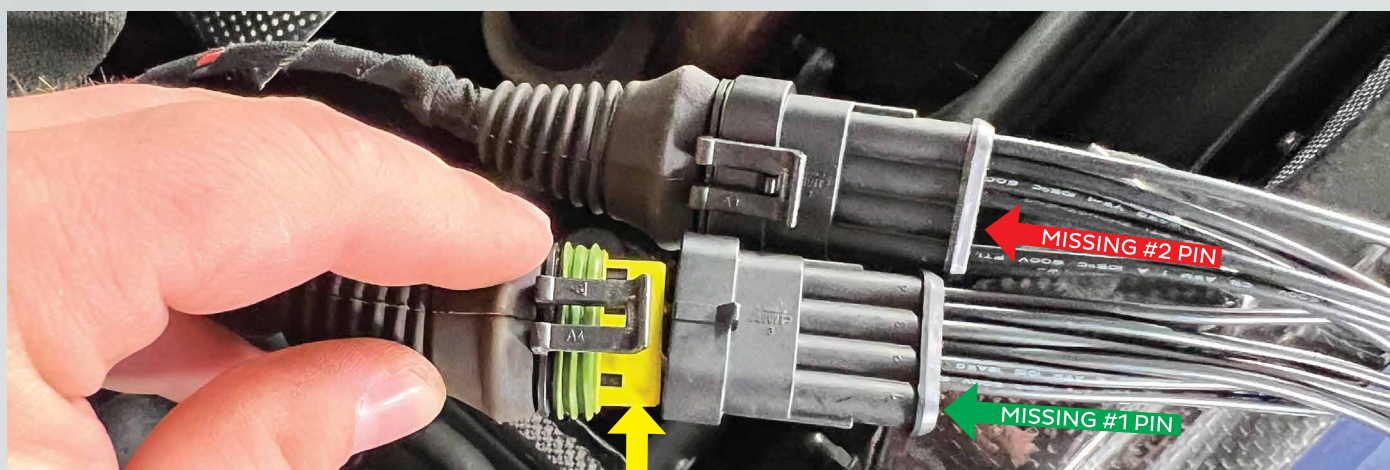


7. Repeat steps #3-6 on the other three (3) tail lights.

8. Locate your US Spec Adaptor Harness and plug it in to the vehicle harness. Follow the pictures below to ensure that you plug in the proper connectors into each other. Repeat with the second harness on the other side of the vehicle. (If you have a EURO spec car, go to the next page)

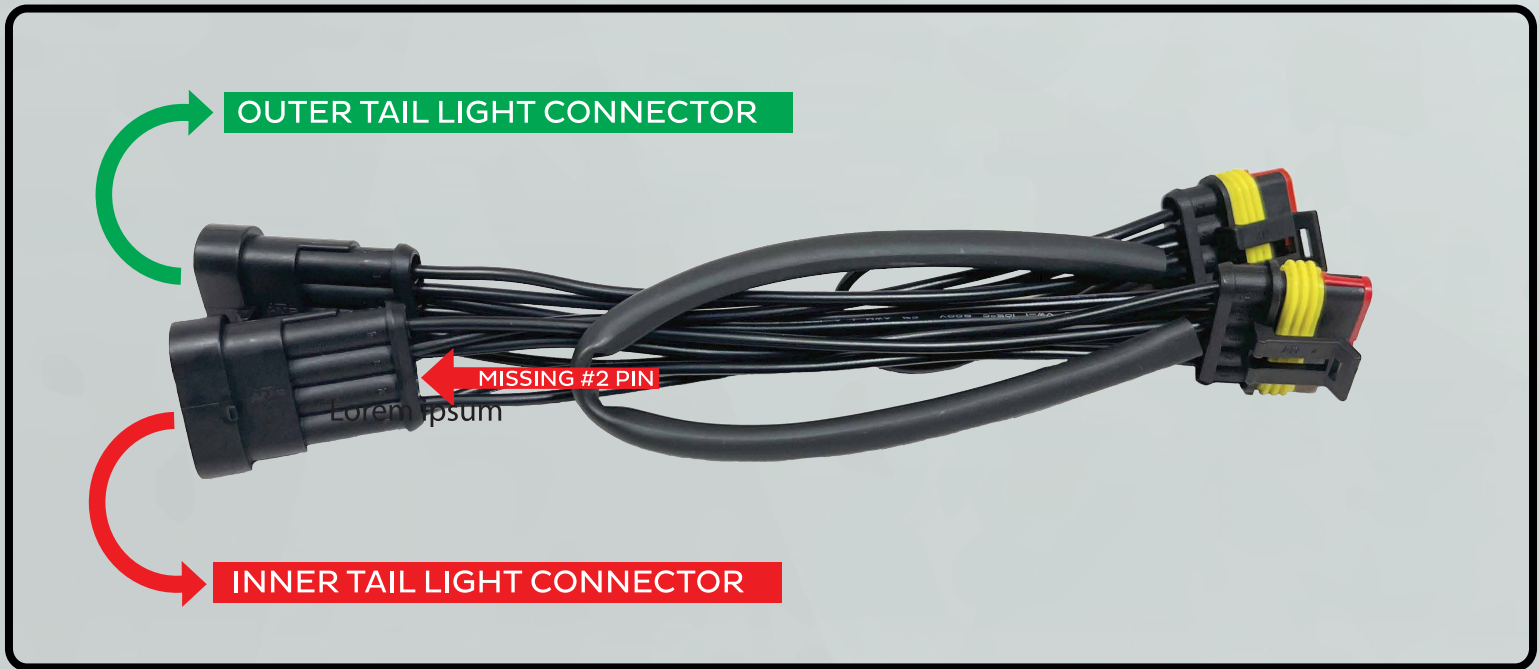


OUTER TAIL LIGHT
GREY CONNECTOR

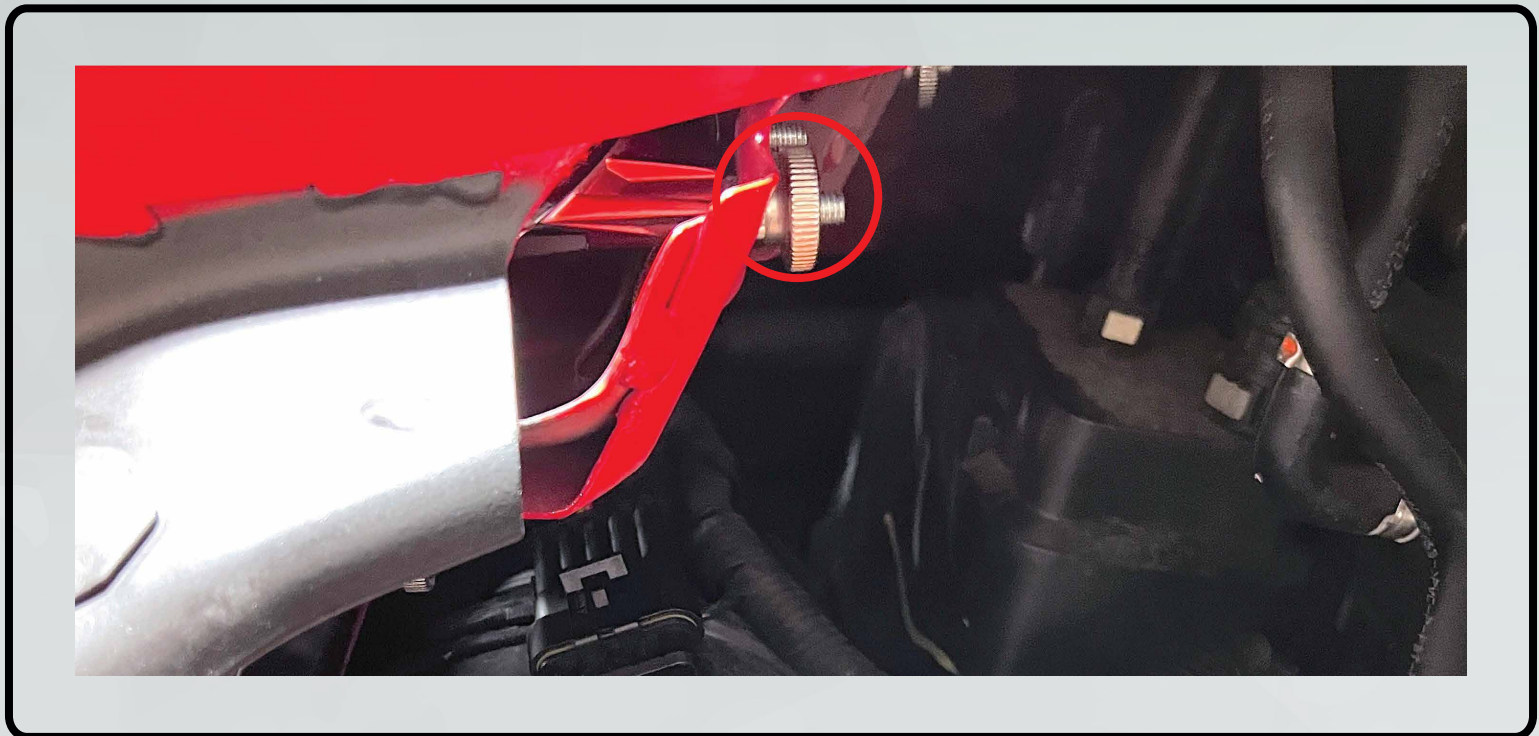


INNER TAIL LIGHT
YELLOW CONNECTOR

- On a European spec car, locate the Euro Spec Adaptor Harness and plug in the harness per side as shown below. (Euro Spec Adaptor sold seperately)



9. -Take one of your Morimoto tail lights to the car and slide it into its place. Using the included Thumb Nuts, secure the tail light with four (4) Thumb Nuts. **HAND TIGHTEN, DO NOT USE PLIERS**
-Repeat this on the other three (3) tail lights.



10. -Plug in the tail light connector into the Adaptor Harness (IMAGE 1). (Note: the 2 outputs on the Adaptor Harness are the same)
- Repeat this on the other tail lights.

Plug in the resistor into the Adaptor Harness on each side of the car (IMAGE 2).

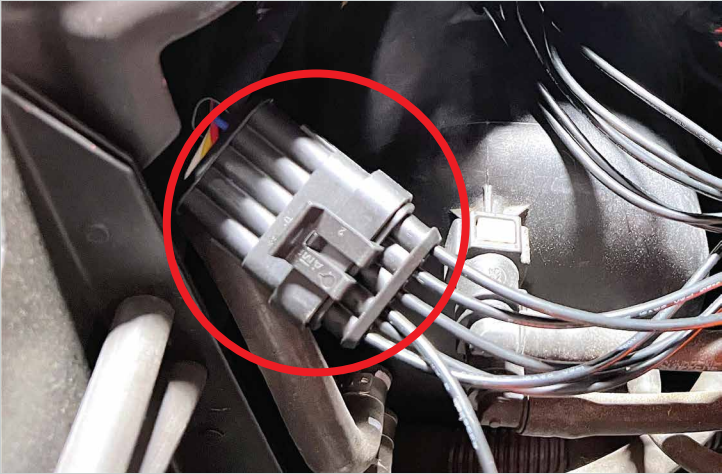


IMAGE 1



IMAGE 2

11. Attach the magnet, on the resistor bracket, to a metal bracket in the engine bay. Pictures below is suggested locations. (Note: the resistor may get HOT so make sure it isn't touching anything that is rubber, plastic or flammable.)



DRIVER SIDE



PASSENGER SIDE

12. Turn the vehicle on and go through all of the functions to make sure everything works.

13. Reassemble the vehicle.

— ENJOY YOUR NEW MORIMOTO TAIL LIGHTS! —