

Part Number:	Test Date:
Description:	Test Report #:
Vehicle Applications:	

TECHNICAL BULLETIN

There is a lot of misinformation in the marketplace. S&B publishes specific test results for each of our intakes & filters as shown below, so you can make an informed decision. Remember, improving your airflow is only good if your engine is still protected. That's the S&B difference!

FACT: S&B Flows _____ Better than Stock. In tests performed in our climate controlled laboratory according to the ISO5011 Test Standard, S&B's intake kit (and filter) had significantly lower restriction (better airflow) than the stock intake system. See the graph on the next page.

WATCH OUT: Some competitors overstate airflow. If they state that their filter will flow, let's say 1000 cfm, without stating at what restriction level, they are trying to mislead you.

Description	% S&B Flowed Better than Stock (tested @ _____ cfm)	Test Conditions
S&B Intake w/ Cleanable Filter (Secondary Inlet - Open)		Barometric Pressure
S&B Intake w/ Cleanable Filter (Secondary Inlet - Closed)		Airflow Setpoint
S&B Intake w/ Dry Filter (Secondary Inlet - Open)		Relative Humidity
S&B Intake w/ Dry Filter (Secondary Inlet - Closed)		Temperature
		Type of Dust
		Batch #
		Dust Feed Rate (grams/minute)

FACT: S&B Protects Your Engine
 S&B Tests at the highest rated CFM for your vehicle when determining the efficiency rate (amount of dust the filter stops), so that we can be sure that your engine will be protected

Description	Efficiency Rate (Tested @ _____ cfm)
Stock	
S&B Intake w/ Cleanable Filter	
S&B Intake w/ Dry Filter	

WATCH OUT: Some Competitors Use the Same Efficiency Rates for Multiple Part Numbers
 Many send one filter off to a lab to be tested at a low cfm and then publish this efficiency rate for all of their part numbers



Air Filter Restriction Test Report

Test #: 907-1R
Sample #: 1R
Filter #:
Housing #:
Date Code: 45086

FH
6/9/2023
FORD



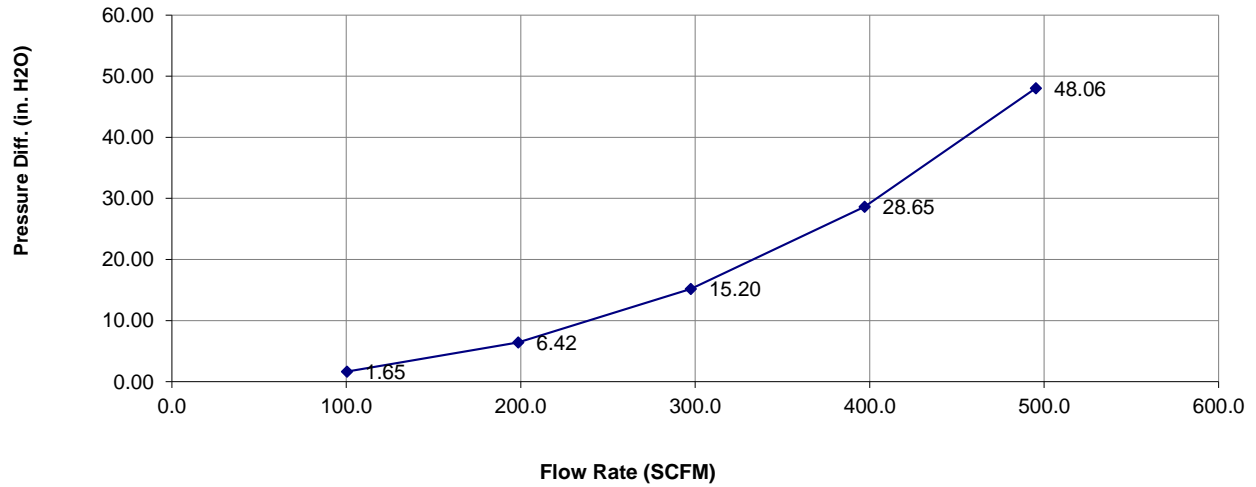
Test Description: 19-23 Ford Bronco Sport 2.3L Restriction Test Stock

Test Conditions

Barometric Pressure: 28.85426 in. Hg
Air Flow Type: SCFM
Number of Pleats:
Flow Direction:

Relative Humidity: 53 %
Temperature: 70 deg. F
Pleat Depth: in.

Air Flow Curve



Air Flow Curve Data

<u>Flow Rate</u>	<u>Differential Pressure</u>
100	1.65
199	6.42
297	15.20
397	28.65
495	48.06

Air Filter Restriction Test Report

Test #: 907-2R
Sample #: 2R
Filter #: KF-1057
Housing #: AL1396B-00
Date Code: 45089

FH
6/12/2023
S&B
S&B



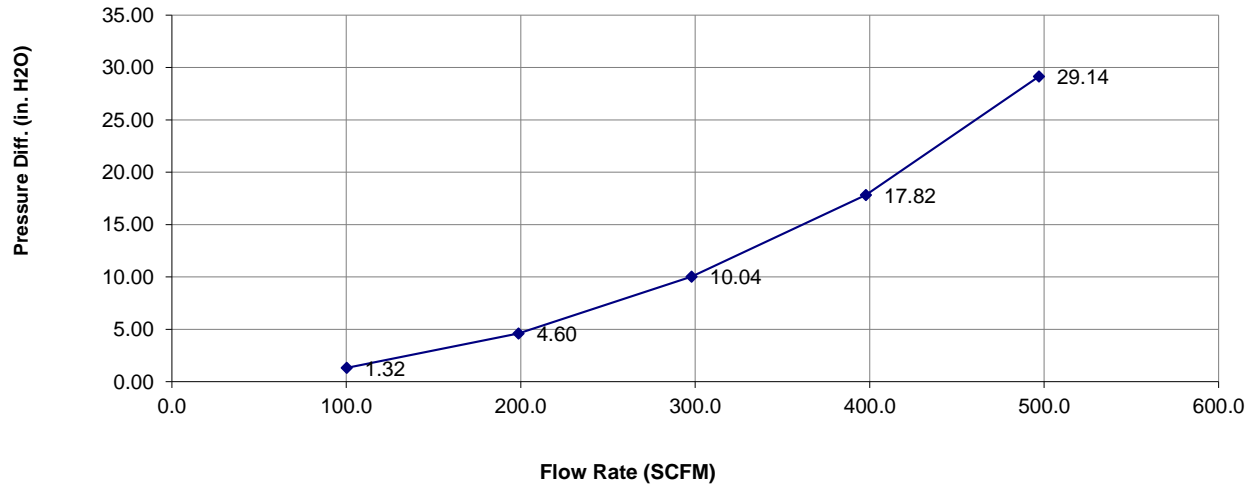
Test Description: 21-23, 75-5161 Ford Bronco Sport 2.3L Restriction Test KF-1057

Test Conditions

Barometric Pressure: 28.90031 in. Hg
Air Flow Type: SCFM
Number of Pleats: 100
Flow Direction:

Relative Humidity: 54 %
Temperature: 69 deg. F
Pleat Depth: 0.7 in.

Air Flow Curve



Air Flow Curve Data

<u>Flow Rate</u>	<u>Differential Pressure</u>
100	1.32
199	4.60
298	10.04
398	17.82
497	29.14

Air Filter Restriction Test Report

Test #: 907-3R
Sample #: 3R
Filter #: KF-1057D
Housing #: AL1396B-00
Date Code: 2023.06.26

DC
6/26/2023
S&B
S&B



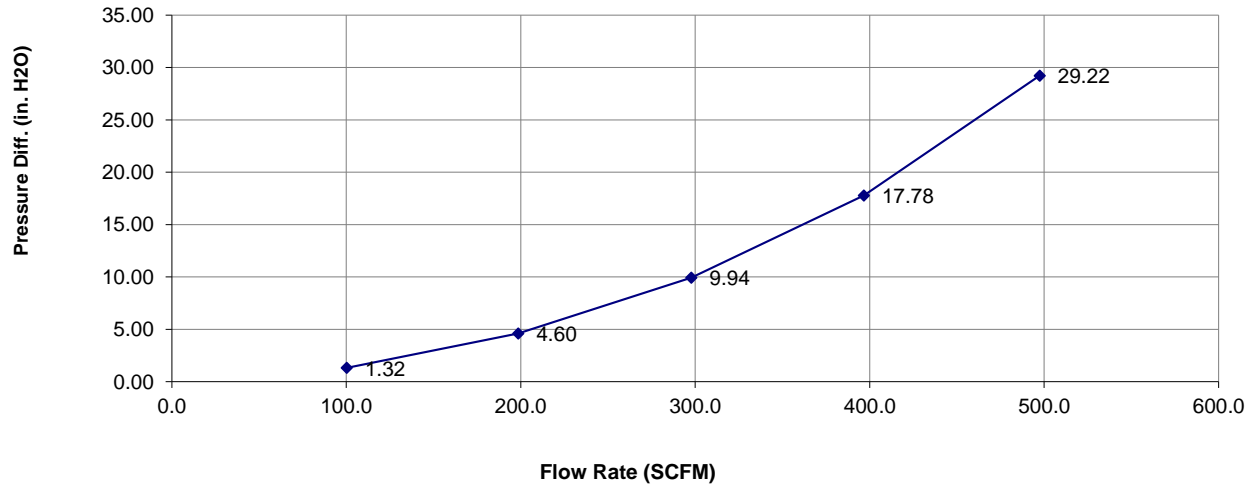
Test Description: 21-23 FORD BRONCO SPORT 2.3L 75-5161D S&B INTAKE RESTRICTION TEST

Test Conditions

Barometric Pressure: 28.72968 in. Hg
Air Flow Type: SCFM
Number of Pleats: 100
Flow Direction:

Relative Humidity: 54 %
Temperature: 69 deg. F
Pleat Depth: in.

Air Flow Curve



Air Flow Curve Data

<u>Flow Rate</u>	<u>Differential Pressure</u>
100	1.32
198	4.60
298	9.94
397	17.78
497	29.22

Air Filter Full Life Efficiency Test Report

Test #: 907-4CE
Sample #: 4CE
Filter #:
Housing #:
Date Code: 45089

Operator: FH
Report Date: 6/12/2023
Filter Mfg.: FORD
Housing Mfg.: FORD



Test Description: 21-23 FORD BRONCO SPORT 2.3L CAPACITY & EFFICIENCY STOCK TEST

Test Conditions

Barometric Pressure:	28.905 in. Hg	Relative Humidity:	53 %
Air Flow Setpoint:	458 SCFM	Type of Dust:	A4 COARSE
Test Procedure:	CE	Batch #:	14996C
Air Flow Type:	SCFM	Temperature:	70 deg. F
Test Endpoint:	10 in. H ₂ O	Initial Add Rate:	NaN g/min
Number of Pleats:		Accumulative Add Rate:	12.97 g/min
Flow Direction:		Pleat Depth:	in.

Test Results

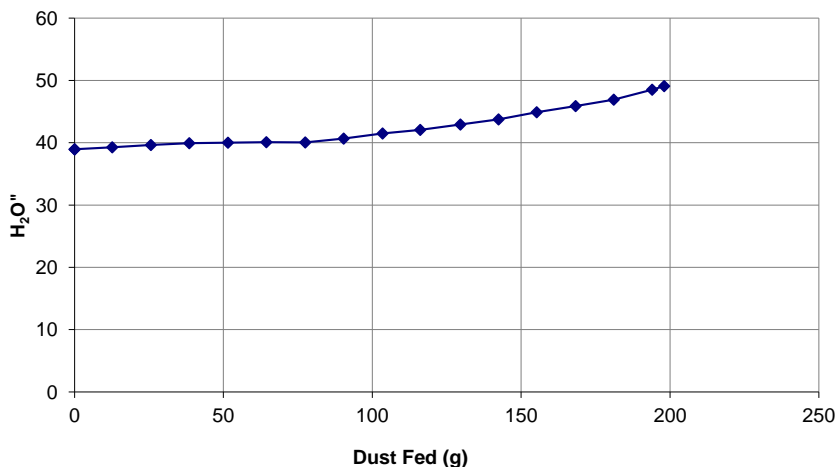
Initial Delta P 38.65 in. H₂O **Accumulative Capacity:** 197.30 g
Test Time: 15.31 min

	Initial		Accumulative	
			Kit	Blanket
Start			3497.20	604.24
End			3694.50	604.28
Gain			197.30	0.04
Efficiency			99.98%	

Standard Restriction

Pressure Differential

Dust Loading Curve



Dust Loading Curve Data

Dust Fed (g)	Pressure ("H ₂ O)
0	38.95
12.651	39.278
25.625	39.651
38.527	39.921
51.516	40.02
64.395	40.081
77.442	40.041
90.376	40.684
103.412	41.505
116.119	42.057
129.555	42.932
142.379	43.761
155.217	44.902
168.308	45.874
181.074	46.906
193.958	48.508
198.021	49.084

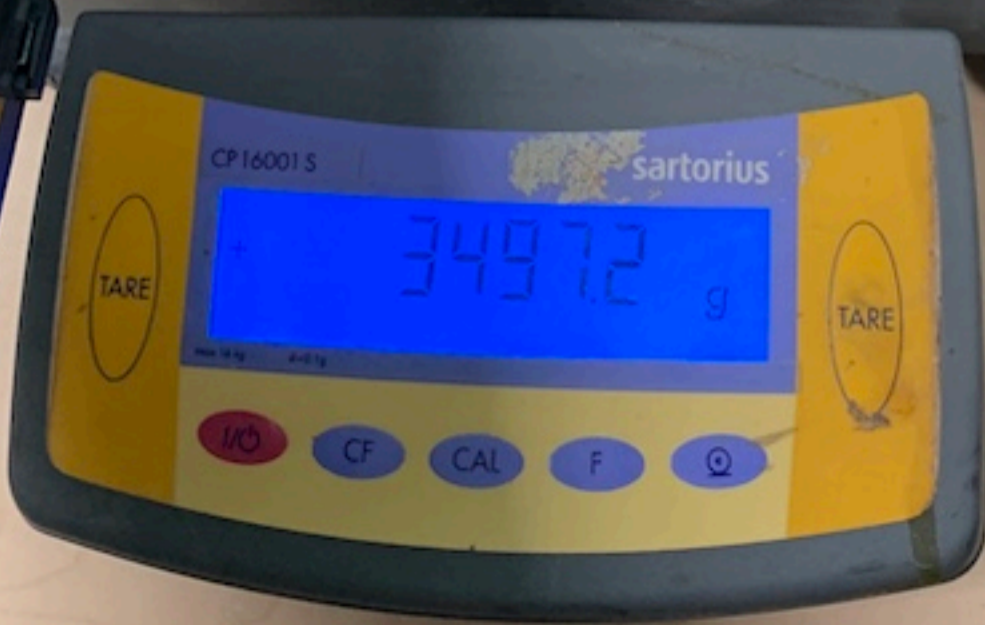


TEST LAB



TEST LAB

CAUTION





TARE

60424 g

TARE

- ON
- OFF
- MODE
- UNIT
- WEIGHT



CP16001S

sartorius

3694.5 g

TARE

ON/OFF

CF

CAL

F

Q

LX81-8E35-A16 WITH/OUT FLOW
FoM6001
LX81-8E35-A16 WITH FLOW
FZTYA-PP-700
MADE IN MEXICO

Sartorius



TARE

604.28

g

TARE

1/O

CF

CAL

F

⊙



sartorius
CP16001 S
69464 g
TARE TARE
Max 16 kg 0.1 mg
I/O CF CAL F Q



60423 g

TARE

TARE

ON/OFF

CF

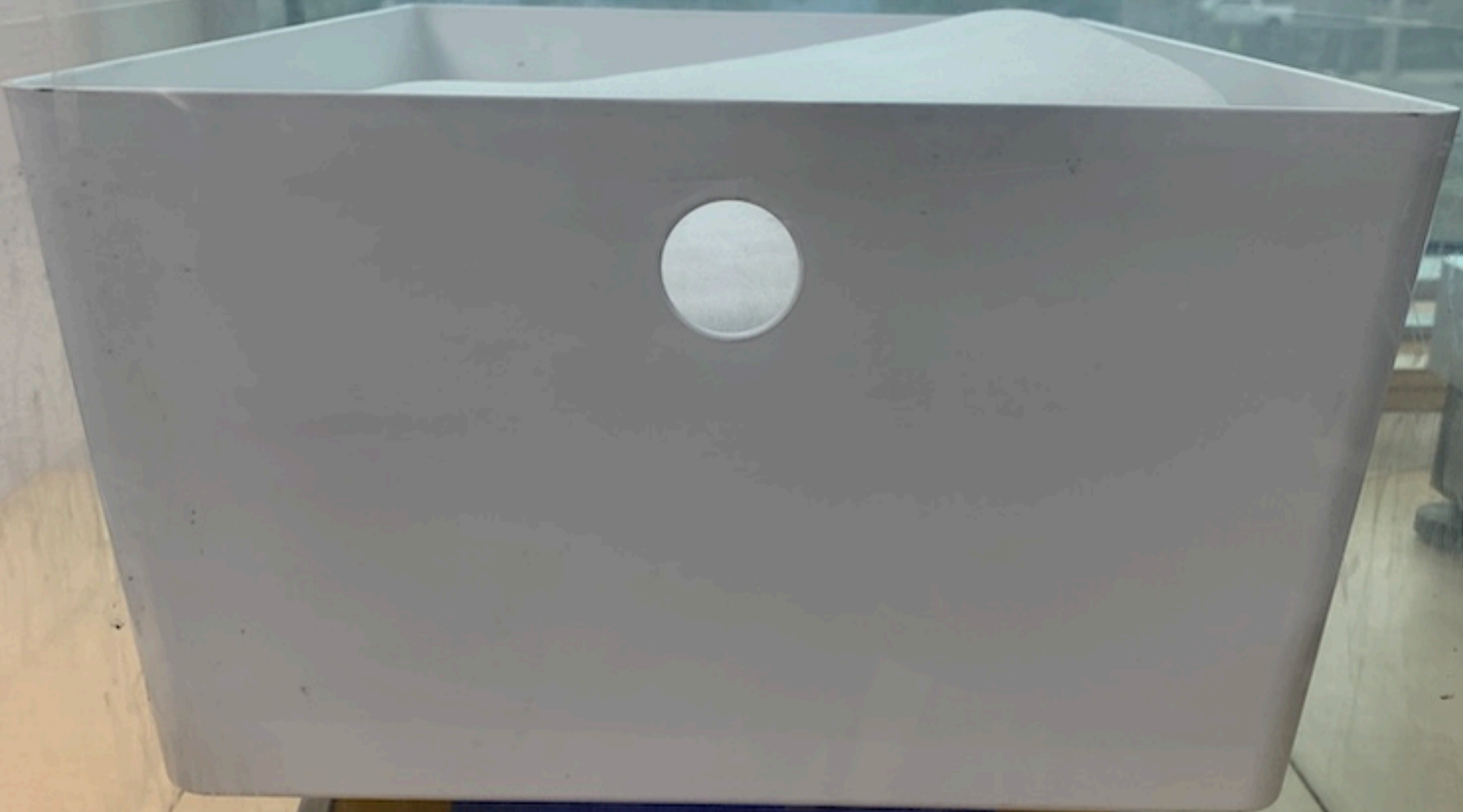
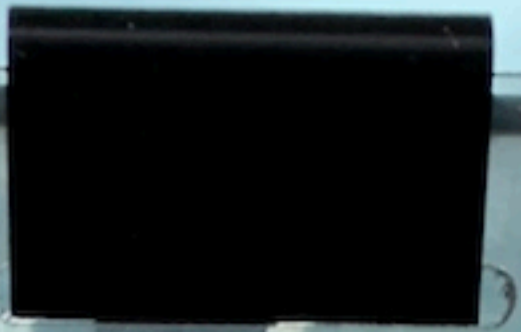
CAL

F

Q







TARE

60482

TARE

Max 5200g d=0.01g

Power

CF

CAL

F

Help