



Test Report

No. SHAEC2125897201

Date: 06 Dec 2021

Page 1 of 9

ZHONGSHAN FUREY PRINTING MATERIAL CO.,LTD.

NO.28,PINGYI ROAD, SHAZI VILLAGE,MINZHONG TOWN, ZHONGSHAN,GD,CHINA

The following sample(s) was/were submitted and identified on behalf of the clients as : OFFSET INKS

SGS Job No. : SP21-036931 - SH

SGS Ref No. : CP21-062309GZ

Client Ref. Information : see the attachment

Date of Sample Received : 26 Nov 2021

Testing Period : 26 Nov 2021 - 06 Dec 2021

Test Requested : Selected test(s) as requested by client.

Test Method : Please refer to next page(s).

Test Results : Please refer to next page(s).

Conclusion : Based on the performed tests on submitted sample(s), the results of Cadmium, Lead, Mercury, Hexavalent chromium, Polybrominated biphenyls (PBBs), Polybrominated diphenyl ethers (PBDEs) and Phthalates such as Bis(2-ethylhexyl) phthalate (DEHP), Butyl benzyl phthalate (BBP), Dibutyl phthalate (DBP) and Diisobutyl phthalate (DIBP) comply with the limits as set by RoHS Directive (EU) 2015/863 amending Annex II to Directive 2011/65/EU.

中文报告

Signed for and on behalf of SGS-CSTC Standards Technical Services (Shanghai) Co., Ltd.

Handwritten signature of Helen Liu

Helen Liu Approved Signatory



This report is the English version of SHAEC2125897202 .



Unless otherwise agreed in writing, this document is issued by the Company subject to its General Conditions of Service printed overleaf, available on request or accessible at http://www.sgs.com/en/Terms-and-Conditions.aspx and, for electronic format documents, subject to Terms and Conditions for Electronic Documents at http://www.sgs.com/en/Terms-and-Conditions/Terms-e-Documents.aspx. Attention is drawn to the limitation of liability, indemnification and jurisdiction issues defined therein. Any holder of this document is advised that information contained hereon reflects the Company's findings at the time of its intervention only and within the limits of Client's instructions, if any. The Company's sole responsibility is to its Client and this document does not exonerate parties to a transaction from exercising all their rights and obligations under the transaction documents. This document cannot be reproduced except in full, without prior written approval of the Company. Any unauthorized alteration, forgery or falsification of the content or appearance of this document is unlawful and offenders may be prosecuted to the fullest extent of the law. Unless otherwise stated the results shown in this test report refer only to the sample(s) tested.

Attention: To check the authenticity of testing /inspection report & certificate, please contact us at telephone: (86-755) 8307 1443, or email: CN.Doccheck@sgs.com
3rd Building, No.889 Yishan Road Xuhui District, Shanghai China 200233 t E&E (86-21) 61402553 f E&E (86-21) 64953679 www.sgs.com
中国·上海·徐汇区宜山路889号3号楼 邮编: 200233 t HL (86-21) 61402594 f HL (86-21) 61156899 e sgs.china@sgs.com



Test Report

No. SHAEC2125897201

Date: 06 Dec 2021

Page 2 of 9

Test Results :

Test Part Description :

Specimen No.	SGS Sample ID	Description
SN1	SHA21-258972.001	Black liquid

Remarks :

- (1) 1 mg/kg = 0.0001%
- (2) MDL = Method Detection Limit
- (3) ND = Not Detected (< MDL)
- (4) "-" = Not Regulated

RoHS Directive (EU) 2015/863 amending Annex II to Directive 2011/65/EU

Test Method : With reference to IEC 62321-4:2013+AMD1:2017, IEC62321-5:2013, IEC62321-7-2:2017, IEC 62321-6:2015 and IEC62321-8:2017, analyzed by ICP-OES, UV-Vis and GC-MS.

Test Item(s)	Limit	Unit	MDL	001
Cadmium (Cd)	100	mg/kg	2	ND
Lead (Pb)	1000	mg/kg	2	ND
Mercury (Hg)	1000	mg/kg	2	ND
Hexavalent Chromium (Cr(VI))	1000	mg/kg	8	ND
Sum of PBBs	1000	mg/kg	-	ND
Monobromobiphenyl	-	mg/kg	5	ND
Dibromobiphenyl	-	mg/kg	5	ND
Tribromobiphenyl	-	mg/kg	5	ND
Tetrabromobiphenyl	-	mg/kg	5	ND
Pentabromobiphenyl	-	mg/kg	5	ND
Hexabromobiphenyl	-	mg/kg	5	ND
Heptabromobiphenyl	-	mg/kg	5	ND
Octabromobiphenyl	-	mg/kg	5	ND
Nonabromobiphenyl	-	mg/kg	5	ND
Decabromobiphenyl	-	mg/kg	5	ND
Sum of PBDEs	1000	mg/kg	-	ND
Monobromodiphenyl ether	-	mg/kg	5	ND
Dibromodiphenyl ether	-	mg/kg	5	ND
Tribromodiphenyl ether	-	mg/kg	5	ND
Tetrabromodiphenyl ether	-	mg/kg	5	ND

SGS 170900340938



Unless otherwise agreed in writing, this document is issued by the Company subject to its General Conditions of Service printed overleaf, available on request or accessible at <http://www.sgs.com/en/Terms-and-Conditions.aspx> and, for electronic format documents, subject to Terms and Conditions for Electronic Documents at <http://www.sgs.com/en/Terms-and-Conditions/Terms-e-Documents.aspx>. Attention is drawn to the limitation of liability, indemnification and jurisdiction issues defined therein. Any holder of this document is advised that information contained hereon reflects the Company's findings at the time of its intervention only and within the limits of Client's instructions, if any. The Company's sole responsibility is to its Client and this document does not exonerate parties to a transaction from exercising all their rights and obligations under the transaction documents. This document cannot be reproduced except in full, without prior written approval of the Company. Any unauthorized alteration, forgery or falsification of the content or appearance of this document is unlawful and offenders may be prosecuted to the fullest extent of the law. Unless otherwise stated the results shown in this test report refer only to the sample(s) tested.

Attention: To check the authenticity of testing /inspection report & certificate, please contact us at telephone: (86-755) 8307 1443, or email: CN.Doccheck@sgs.com



Test Report

No. SHAEC2125897201

Date: 06 Dec 2021

Page 3 of 9

Test Item(s)	Limit	Unit	MDL	001
Pentabromodiphenyl ether	-	mg/kg	5	ND
Hexabromodiphenyl ether	-	mg/kg	5	ND
Heptabromodiphenyl ether	-	mg/kg	5	ND
Octabromodiphenyl ether	-	mg/kg	5	ND
Nonabromodiphenyl ether	-	mg/kg	5	ND
Decabromodiphenyl ether	-	mg/kg	5	ND
Di-butyl Phthalate (DBP)	1000	mg/kg	50	ND
Benzyl Butyl Phthalate (BBP)	1000	mg/kg	50	ND
Di-2-Ethyl Hexyl Phthalate (DEHP)	1000	mg/kg	50	ND
Diisobutyl Phthalates (DIBP)	1000	mg/kg	50	ND

Notes :

- (1) The maximum permissible limit is quoted from RoHS Directive (EU) 2015/863. IEC 62321 series is equivalent to EN 62321 series
https://www.cenelec.eu/dyn/www/f?p=104:30:1742232870351101:::FSP_ORG_ID,FSP_LANG_ID:1258637,25
- (2) The restriction of DEHP, BBP, DBP and DIBP shall apply to medical devices, including in vitro medical devices, and monitoring and control instruments, including industrial monitoring and control instruments, from 22 July 2021.


 檢
 inspect




Unless otherwise agreed in writing, this document is issued by the Company subject to its General Conditions of Service printed overleaf, available on request or accessible at <http://www.sgs.com/en/Terms-and-Conditions.aspx> and, for electronic format documents, subject to Terms and Conditions for Electronic Documents at <http://www.sgs.com/en/Terms-and-Conditions/Terms-e-Documents.aspx>. Attention is drawn to the limitation of liability, indemnification and jurisdiction issues defined therein. Any holder of this document is advised that information contained hereon reflects the Company's findings at the time of its intervention only and within the limits of Client's instructions, if any. The Company's sole responsibility is to its Client and this document does not exonerate parties to a transaction from exercising all their rights and obligations under the transaction documents. This document cannot be reproduced except in full, without prior written approval of the Company. Any unauthorized alteration, forgery or falsification of the content or appearance of this document is unlawful and offenders may be prosecuted to the fullest extent of the law. Unless otherwise stated the results shown in this test report refer only to the sample(s) tested.

Attention: To check the authenticity of testing / inspection report & certificate, please contact us at telephone: (86-755) 8307 1443, or email: CN.Doccheck@sgs.com

3rd Building, No. 889 Yishan Road Xuhui District, Shanghai China 200233 t E&E (86-21) 61402553 f E&E (86-21) 64953679 www.sgs.com.cn
 中国·上海·徐汇区宜山路889号3号楼 邮编: 200233 t HL (86-21) 61402594 f HL (86-21) 61156899 e sgs.china@sgs.com



Test Report

No. SHAEC2125897201

Date: 06 Dec 2021

Page 4 of 9

ATTACHMENT:

USED FOR: TODOT SOYBASED OFFSET INK, DRUCKMEISTER PLUS QUATTRO 9908, TODOT POP OFFSET INK, TODOT ECO OFFSET INK, DRUCKMEISTER OFFSET INK CODEX, TOPDOT OFFSET INK TD-900, DRUCKMEISTER PLUS OFFSET INK COLORPRO 9901, TOPDOT OFFSET INK TD-600, DRUCKMEISTER PLUS OFFSET INK ECOSTAR 8801, TOPDOT OFFSET INK TD-300, DRUCKMEISTER OFFSET INK QUICKSET 1100, TOPDOT OFFSET INK TD-200, DRUCKMEISTER OFFSET INK APPLEINK 0055, TOPDOT OFFSET INK 0055, DRUCKMEISTER OFFSET INK 9900ON, TOPDOT JOB BLACK, DRUCKMEISTER OFFSET INK 9900QD, TOPDOT QUATTRO 9908, DRUCKMEISTER OFFSET INK 8800ON, KAKA SOYBASED OFFSET INK, DRUCKMEISTER PLUS OFFSET INK COLORPRO 9901L, DRUCKMEISTER PLUS OFFSET INK ECOSTAR 8801L, KAKA ECO OFFSET INK, DRUCKMEISTER OFFSET INK QUICKSET 1100L, KAKA OFFSET INK KNSG, DRUCKMEISTER OFFSET INK QUICKSET 1100LS, KAKA OFFSET INK KNS, DRUCKMEISTER OFFSET INK QUICKSET T1100, KAKA OFFSET INK KGS, DRUCKMEISTER OFFSET INK QUICKSET 1100, KAKA OFFSET INK KTS, DRUCKMEISTER JOB BLACK, KAKA OFFSET INK KOS, FUREY OFFSET INK NATURE, KAKA JOB BLACK, SONTIA SOYBASED INK, CVC SOYBASED OFFSET INK, SONTIA OFFSET INK ECO, CVC ECO OFFSET INK, SONTIA OFFSET INK ST-9GS, CVC OFFSET INK CV-6000, SONTIA OFFSET INK ST-8GS, CVC OFFSET INK CV-5000, SONTIA OFFSET INK ST-6GS, CVC OFFSET INK CV-3000, SONTIA OFFSET INK ST-5GS, CVC OFFSET INK CV-2000, SONTIA JOB BLACK, CVC OFFSET INK CV-1000, SONTIA OFFSET INK ST-7GS, CVC JOB BLACK, SONTIA OFFSET INK ART, BXN SOYBASED OFFSET INK, MAOJIAN OFFSET INK MT-0022, MAOJIAN OFFSET INK MT-0033, BXN ECO OFFSET INK, MAOJIAN OFFSET INK QUICKSET T1100, BXN OFFSET INK BX-0011, MAOJIAN OFFSET INK MT-0022L BXN OFFSET INK BX-0022, MAOJIAN OFFSET INK MT-0033L, BXN OFFSET INK BX-0033, MAOJIAN OFFSET INK MT-0022W, BXN OFFSET INK BX-2000, MAOJIAN OFFSET INK MT-0033W, BXN OFFSET INK BX-0055, MAOJIAN OFFSET INK MT-0055W, BXN OFFSET INK BX-0033 PLUS, MAOJIAN JOB BLACK, BXN OFFSET INK BX-0033, YINGZHI JOB BLACK, BXN JOB BLACK, SUPOWR JOB BLACK, BXN OFFSET INK BX-0022W, WEIYUN JOB BLACK, BXN OFFSET INK BX-0033W, PRESSPRO JOB BLACK, BXN OFFSET INK BX-0055W, LOCOER SOYBASED INK, YINGZHI OFFSET INK FR-3, SUPOWR OFFSET INK FR-3, LOCOER OFFSET INK ECO, WEIYUN OFFSET INK F-3000, LOCOER OFFSET INK LC-0011, PRESSPRO OFFSET INK F-3000, LOCOER OFFSET INK LC-0022, YINGZHI OFFSET INK FR-2, LOCOER OFFSET INK LC-0033 PLUS, SUPOWR OFFSET INK FR-2, LOCOER OFFSET INK LC-0033, WEIYUN OFFSET INK F-2000, LOCOER OFFSET INK LC-0055, PRESSPRO OFFSET INK F-2000, LOCOER JOB BLACK, YINGZHI OFFSET INK FR-1, SONTIA OFFSET INK ART, SUPOWR OFFSET INK FR-1, LOCOER OFFSET INK UNI-300, WEIYUN OFFSET INK F-1000, PRESSPRO OFFSET INK F-1000, TOPDOT OFFSET INK TD-900 PLUS, TOPDOT OFFSET INK TD-600 PLUS, TOPDOT OFFSET INK TD-300 PLUS, TOPDOT OFFSET INK TD-200 PLUS, TOPDOT OFFSET INK 0055 PLUS, TOPDOT OFFSET INK TD-900 L, TOPDOT OFFSET INK TD-600L, TOPDOT OFFSET INK TD-300L, TOPDOT OFFSET INK TD-200, SONTIA OFFSET INK TD-200, LOCOER OFFSET INK LC-0011 PLUS LOCOER OFFSET INK LC-0022 PLUS, LOCOER OFFSET INK LC-0055 PLUS, LOCOER OFFSET INK LC-0011L, LOCOER OFFSET INK LC-0022L, LOCOER OFFSET INK LC-0033L, POP YELLOW, POP MAGENTA, POP CYAN, POP BLACK, POP WHITE, MATTE VARNISH, GLOSS VARNISH, 05-03 WARM RED, 05-04 BRIGHT RED, 05-06 BRIGHT RED, 05-29 ORANGE, 05-39 REFLEX BLUE, 05-60 GREEN, 05-40 WHITE, 05-17 PINK, 05-18 RHODAMINE RED, 05-36 ROYAL BLUE, 05-37 DARK BLUE, 10-53 BLACK, 05-90 GLOSS PASTE, 05-92 TACK REDUCER, 05-94 WEAR-RESISTANT VARNISH, 05-93 TINT MEDIUM, BAMBOO PINK, PRINTED-IRON WHITE, 888BLACK, 072 REFLEX BLUE, ULTRA WHITE, FLUORESCENT INK P801-809, PALE GOLD, PALE RICH GOLD, RICH GOLD, SILVER, 9222 PALE GOLD, 9223 PALE RICH GOLD, 9224 RICH GOLD, 9310 SILVER, 9888 PALE GOLD, 9890 PALE RICH GOLD, 9898 RICH GOLD, PANTONE PT285C PANTONE PT185C, PT801C, PT802C, PT803C, PT804C, PT805C, PT806C, PT807C

服务
检验
ion &
Tech



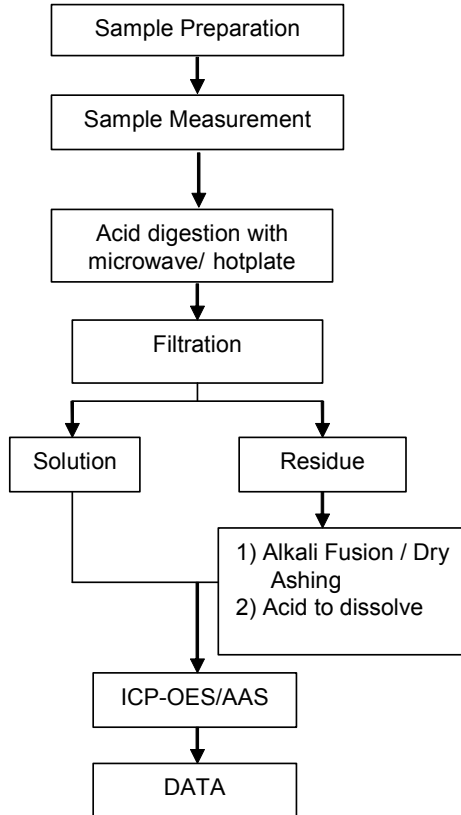
Unless otherwise agreed in writing, this document is issued by the Company subject to its General Conditions of Service printed overleaf, available on request or accessible at <http://www.sgs.com/en/Terms-and-Conditions.aspx> and, for electronic format documents, subject to Terms and Conditions for Electronic Documents at <http://www.sgs.com/en/Terms-and-Conditions/Terms-e-Documents.aspx>. Attention is drawn to the limitation of liability, indemnification and jurisdiction issues defined therein. Any holder of this document is advised that information contained hereon reflects the Company's findings at the time of its intervention only and within the limits of Client's instructions, if any. The Company's sole responsibility is to its Client and this document does not exonerate parties to a transaction from exercising all their rights and obligations under the transaction documents. This document cannot be reproduced except in full, without prior written approval of the Company. Any unauthorized alteration, forgery or falsification of the content or appearance of this document is unlawful and offenders may be prosecuted to the fullest extent of the law. Unless otherwise stated the results shown in this test report refer only to the sample(s) tested.

SGS-CSI (Shanghai) Technical Services (Shanghai) Co., Ltd. 3rd Building, No. 889 Yishan Road Xuhui District, Shanghai China 200233 t E&E (86-21) 61402553 f E&E (86-21) 64953679 www.sgsgroup.com.cn
Testing Center (China) (Shanghai) 中国·上海·徐汇区宜山路889号3号楼 邮编: 200233 t HL (86-21) 61402594 f HL (86-21) 61156899 e sgs.china@sgs.com

ATTACHMENTS

Elements (IEC62321) Testing Flow Chart

1) These samples were dissolved totally by pre-conditioning method according to below flow chart.



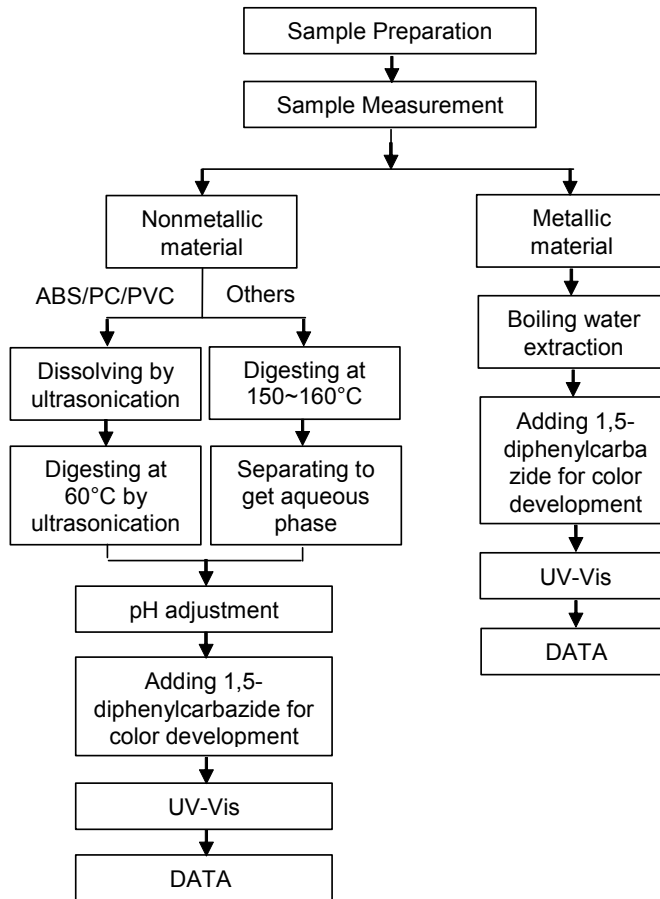
Unless otherwise agreed in writing, this document is issued by the Company subject to its General Conditions of Service printed overleaf, available on request or accessible at <http://www.sgs.com/en/Terms-and-Conditions.aspx> and, for electronic format documents, subject to Terms and Conditions for Electronic Documents at <http://www.sgs.com/en/Terms-and-Conditions/Terms-e-Documents.aspx>. Attention is drawn to the limitation of liability, indemnification and jurisdiction issues defined therein. Any holder of this document is advised that information contained hereon reflects the Company's findings at the time of its intervention only and within the limits of Client's instructions, if any. The Company's sole responsibility is to its Client and this document does not exonerate parties to a transaction from exercising all their rights and obligations under the transaction documents. This document cannot be reproduced except in full, without prior written approval of the Company. Any unauthorized alteration, forgery or falsification of the content or appearance of this document is unlawful and offenders may be prosecuted to the fullest extent of the law. Unless otherwise stated the results shown in this test report refer only to the sample(s) tested.

Attention: To check the authenticity of testing /inspection report & certificate, please contact us at telephone: (86-755) 8307 1443, or email: CN_Doccheck@sgs.com

SGS-CSI (Shanghai) Technical Services (Shanghai) Co., Ltd. 3rd Building, No. 889 Yishan Road Xuhui District, Shanghai China 200233 t E&E (86-21) 61402553 f E&E (86-21) 64953679 www.sgs.com.cn
 中国·上海·徐汇区宜山路889号3号楼 邮编: 200233 t HL (86-21) 61402594 f HL (86-21) 61156899 e sgs.china@sgs.com

ATTACHMENTS

Hexavalent Chromium (Cr(VI)) Testing Flow Chart



Unless otherwise agreed in writing, this document is issued by the Company subject to its General Conditions of Service printed overleaf, available on request or accessible at <http://www.sgs.com/en/Terms-and-Conditions.aspx> and, for electronic format documents, subject to Terms and Conditions for Electronic Documents at <http://www.sgs.com/en/Terms-and-Conditions/Terms-e-Documents.aspx>. Attention is drawn to the limitation of liability, indemnification and jurisdiction issues defined therein. Any holder of this document is advised that information contained hereon reflects the Company's findings at the time of its intervention only and within the limits of Client's instructions, if any. The Company's sole responsibility is to its Client and this document does not exonerate parties to a transaction from exercising all their rights and obligations under the transaction documents. This document cannot be reproduced except in full, without prior written approval of the Company. Any unauthorized alteration, forgery or falsification of the content or appearance of this document is unlawful and offenders may be prosecuted to the fullest extent of the law. Unless otherwise stated the results shown in this test report refer only to the sample(s) tested.

Attention: To check the authenticity of testing /inspection report & certificate, please contact us at telephone: (86-755) 8307 1443, or email: CN.Doccheck@sgs.com

SGS-CSI (Shanghai) Technical Services (Shanghai) Co., Ltd. 3rd Building, No. 889 Yishan Road Xuhui District, Shanghai China 200233 t E&E (86-21) 61402553 f E&E (86-21) 64953679 www.sgs.com.cn
 中国·上海·徐汇区宜山路889号3号楼 邮编: 200233 t HL (86-21) 61402594 f HL (86-21) 61156899 e sgs.china@sgs.com

(上)
用
ng Se
ervice



Test Report

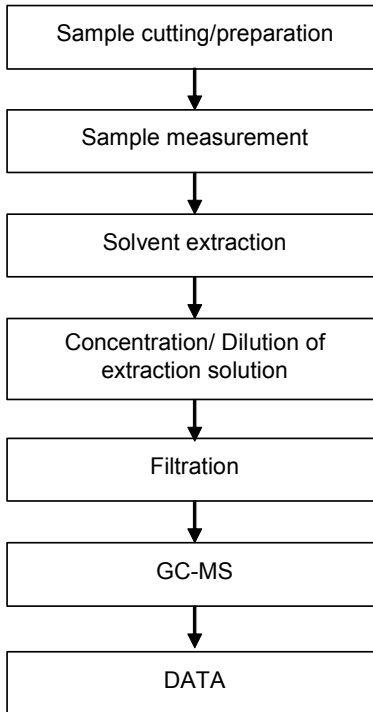
No. SHAEC2125897201

Date: 06 Dec 2021

Page 7 of 9

ATTACHMENTS

PBBs/PBDEs Testing Flow Chart



章
rvice
/Shanghai



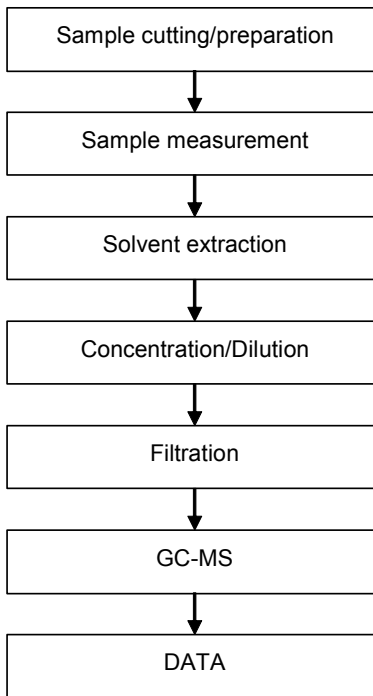
Unless otherwise agreed in writing, this document is issued by the Company subject to its General Conditions of Service printed overleaf, available on request or accessible at <http://www.sgs.com/en/Terms-and-Conditions.aspx> and, for electronic format documents, subject to Terms and Conditions for Electronic Documents at <http://www.sgs.com/en/Terms-and-Conditions/Terms-e-Documents.aspx>. Attention is drawn to the limitation of liability, indemnification and jurisdiction issues defined therein. Any holder of this document is advised that information contained hereon reflects the Company's findings at the time of its intervention only and within the limits of Client's instructions, if any. The Company's sole responsibility is to its Client and this document does not exonerate parties to a transaction from exercising all their rights and obligations under the transaction documents. This document cannot be reproduced except in full, without prior written approval of the Company. Any unauthorized alteration, forgery or falsification of the content or appearance of this document is unlawful and offenders may be prosecuted to the fullest extent of the law. Unless otherwise stated the results shown in this test report refer only to the sample(s) tested.

Attention: To check the authenticity of testing /inspection report & certificate, please contact us at telephone: (86-755) 8307 1443, or email: CN.Doccheck@sgs.com

SGS-CSTC (Shanghai) Technical Services (Shanghai) Co., Ltd. 3rd Building, No. 889 Yishan Road Xuhui District, Shanghai China 200233 t E&E (86-21) 61402553 f E&E (86-21) 64953679 www.sgs.com.cn
 Testing Center-China (Shanghai) 中国·上海·徐汇区宜山路889号3号楼 邮编: 200233 t HL (86-21) 61402594 f HL (86-21) 61156899 e sgs.china@sgs.com

ATTACHMENTS

Phthalates Testing Flow Chart



上海 SGS 有限公司



Unless otherwise agreed in writing, this document is issued by the Company subject to its General Conditions of Service printed overleaf, available on request or accessible at <http://www.sgs.com/en/Terms-and-Conditions.aspx> and, for electronic format documents, subject to Terms and Conditions for Electronic Documents at <http://www.sgs.com/en/Terms-and-Conditions/Terms-e-Documents.aspx>. Attention is drawn to the limitation of liability, indemnification and jurisdiction issues defined therein. Any holder of this document is advised that information contained hereon reflects the Company's findings at the time of its intervention only and within the limits of Client's instructions, if any. The Company's sole responsibility is to its Client and this document does not exonerate parties to a transaction from exercising all their rights and obligations under the transaction documents. This document cannot be reproduced except in full, without prior written approval of the Company. Any unauthorized alteration, forgery or falsification of the content or appearance of this document is unlawful and offenders may be prosecuted to the fullest extent of the law. Unless otherwise stated the results shown in this test report refer only to the sample(s) tested.

Attention: To check the authenticity of testing /inspection report & certificate, please contact us at telephone: (86-755) 8307 1443, or email: CN.Doccheck@sgs.com
 3rd Building, No. 889 Yishan Road Xuhui District, Shanghai China 200233 t E&E (86-21) 61402553 f E&E (86-21) 64953679 www.sgs.com.cn
 中国·上海·徐汇区宜山路889号3号楼 邮编: 200233 t HL (86-21) 61402594 f HL (86-21) 61156899 e sgs.china@sgs.com

Sample photo:



SGS authenticate the photo on original report only

*** End of Report ***

八 八 八 八



Unless otherwise agreed in writing, this document is issued by the Company subject to its General Conditions of Service printed overleaf, available on request or accessible at <http://www.sgs.com/en/Terms-and-Conditions.aspx> and, for electronic format documents, subject to Terms and Conditions for Electronic Documents at <http://www.sgs.com/en/Terms-and-Conditions/Terms-e-Documents.aspx>. Attention is drawn to the limitation of liability, indemnification and jurisdiction issues defined therein. Any holder of this document is advised that information contained hereon reflects the Company's findings at the time of its intervention only and within the limits of Client's instructions, if any. The Company's sole responsibility is to its Client and this document does not exonerate parties to a transaction from exercising all their rights and obligations under the transaction documents. This document cannot be reproduced except in full, without prior written approval of the Company. Any unauthorized alteration, forgery or falsification of the content or appearance of this document is unlawful and offenders may be prosecuted to the fullest extent of the law. Unless otherwise stated the results shown in this test report refer only to the sample(s) tested.

Attention: To check the authenticity of testing /inspection report & certificate, please contact us at telephone: (86-755) 8307 1443, or email: CN.Doccheck@sgs.com
 3rd Building, No. 889 Yishan Road Xuhui District, Shanghai China 200233 t E&E (86-21) 61402553 f E&E (86-21) 64953679 www.sgs.com.cn
 中国·上海·徐汇区宜山路889号3号楼 邮编: 200233 t HL (86-21) 61402594 f HL (86-21) 61156899 e sgs.china@sgs.com