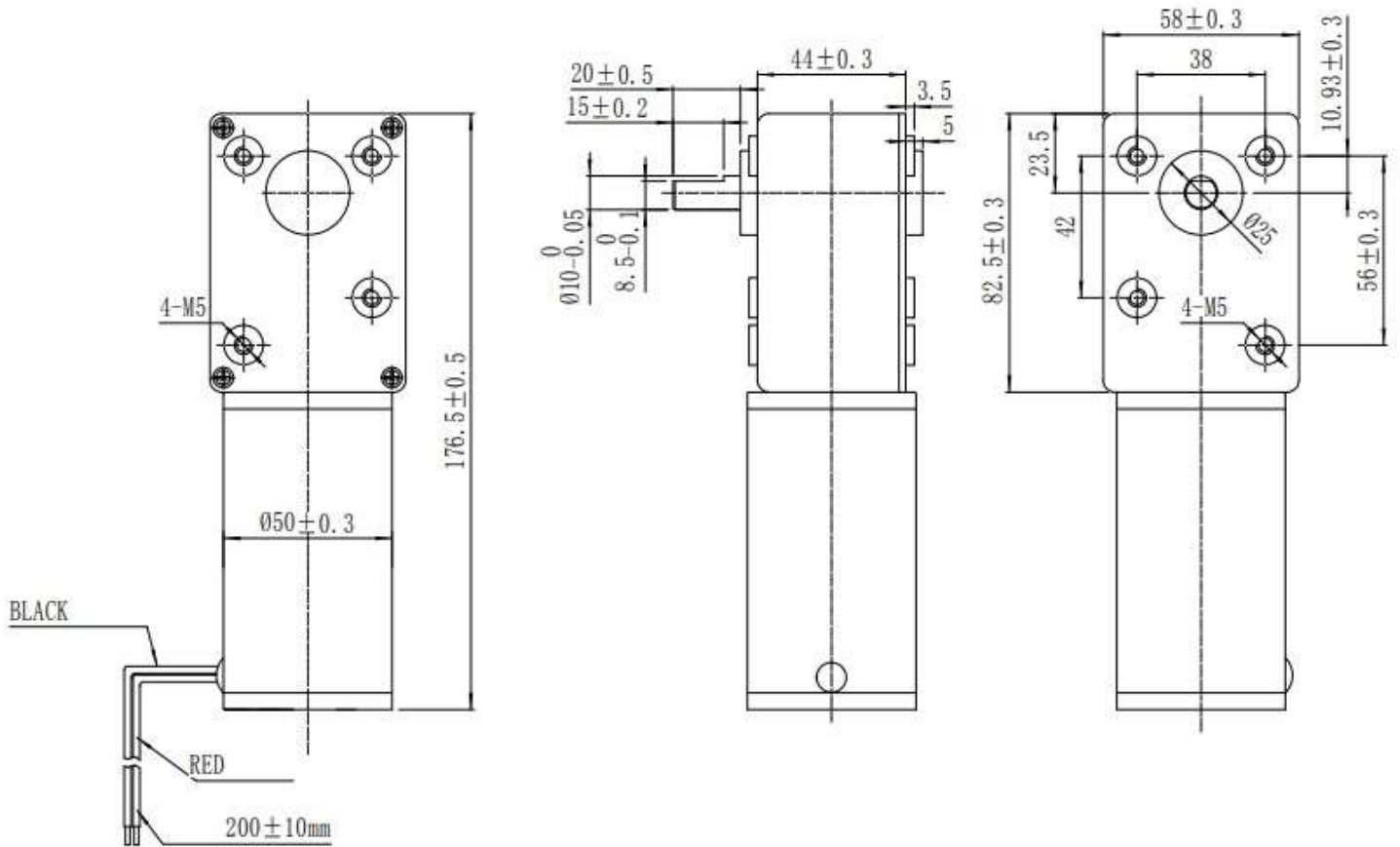


Model: FA-GM-82-12-96

FIRGELLI® Rotary Actuator Worm Gear Motors – 12vdc input, with 10mm D-shaft output for high torque applications.



Specification:

SKU FA-GM-82-12-96	VOLTAGE	AMPS	INPUT POWER (WATTS)	TORQUE (KG-CM)	RPM	OUTPUT POWER (WATTS)	EFFICIENCY
NO LOAD	12.05	1.869	22.49	0.00	66.8	0.00	0.00
AT MAX EFFICIENCY	11.87	8.083	95.68	49.96	55.0	28.29	15.1
OUTPUT POWER	11.55	19.51	224.1	142.04	33.4	48.71	17.11
STALL	11.04	37.13	406.0	283.99	0	0	0