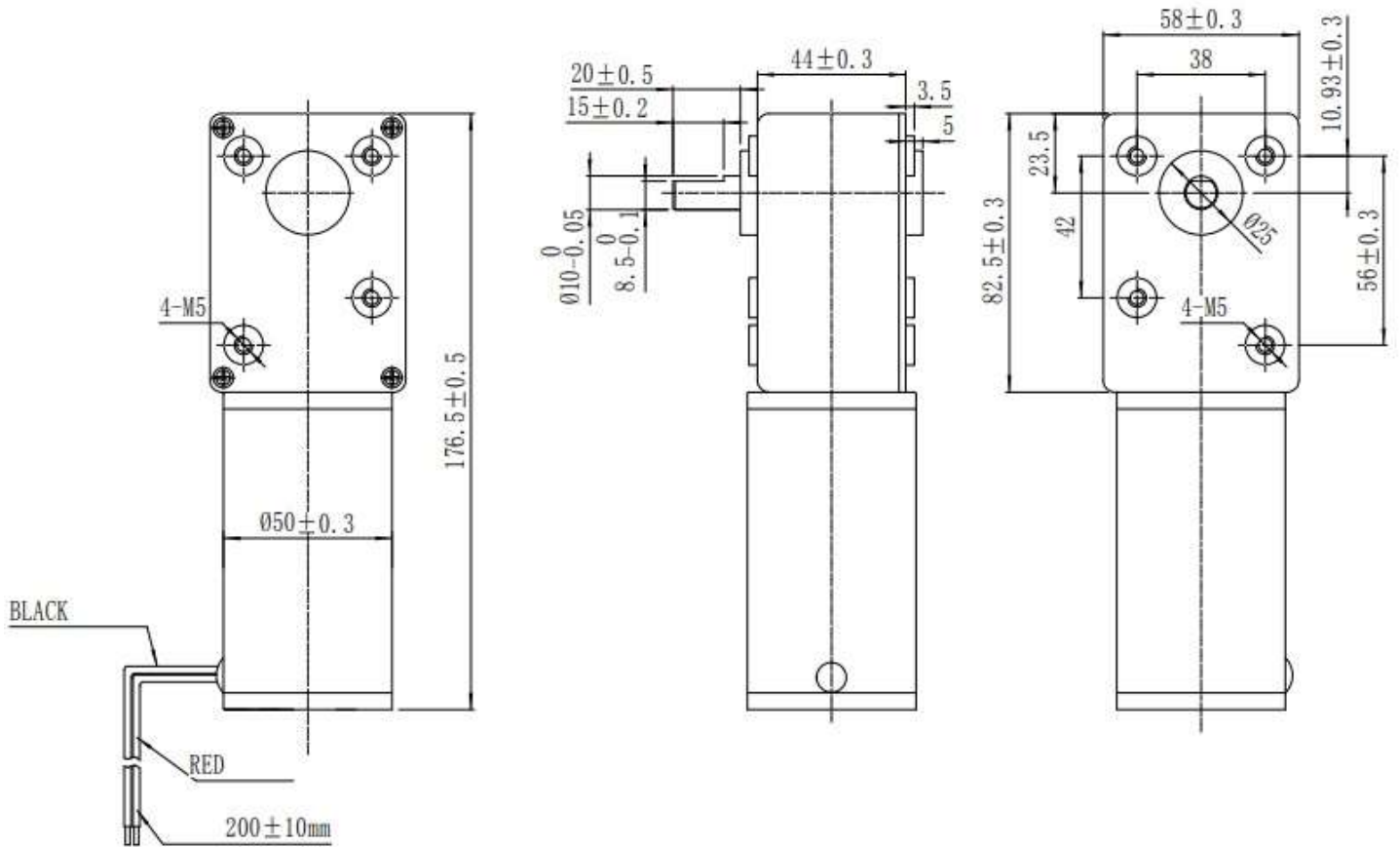


Model: FA-GM-82-12-48

FIRGELLI® Rotary Actuator Worm Gear Motors – 12vdc input, with 10mm D-shaft output for high torque applications.



Specification:

| SKU FA-GM-82-12-48 | VOLTAGE | AMPS | INPUT POWER (WATTS) | TORQUE (KG-CM) | RPM | OUTPUT POWER (WATTS) | EFFICIENCY |
|-----------------------|---------|-------|---------------------------|-------------------|-------|-------------------------|------------|
| NO LOAD | 12.05 | 1.772 | 21.35 | 0.00 | 136.8 | 0.00 | 0.00 |
| AT MAX EFFICIENCY | 11.87 | 7.928 | 94.11 | 29.58 | 113.1 | 14.35 | 36.5 |
| OUTPUT POWER | 11.55 | 19.09 | 220.6 | 83.22 | 70.1 | 59.86 | 27.1 |
| STALL | 11.04 | 37.26 | 411.2 | 170.52 | 0 | 0 | 0 |