
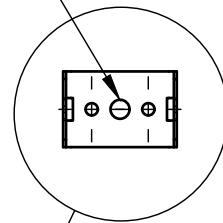


Dept.	Technical reference	Created by Victoria Magniant 11/05/2023	Approved by		
 VICTORIA MAGNIANT		Document type	Document status		
		Title ASSEMBLAGE - APPLIQUE TAKOSU 300	DWG No.		
			Rev.	Date of issue	Sheet 1/3

1- Turn the electricity
OFF

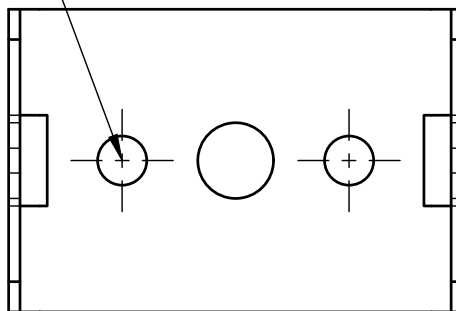
2- Place the plate
around the
electrical output




A

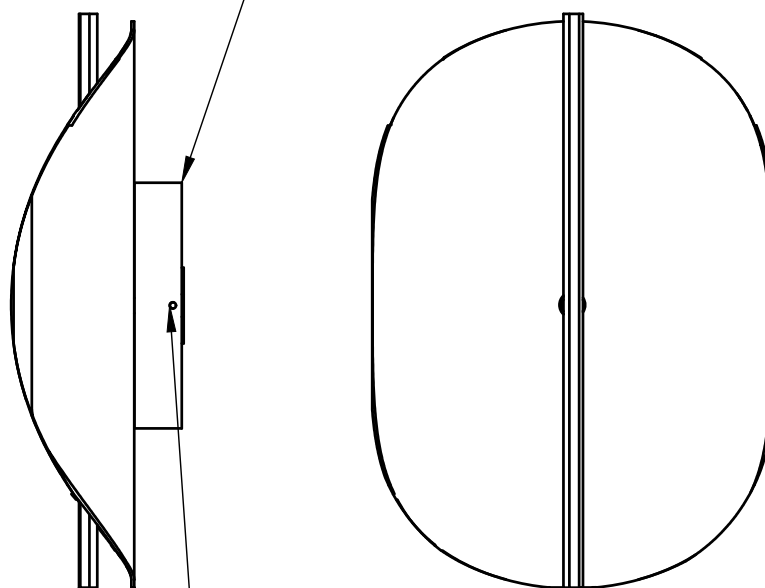
3- Fix the wall plate with
2 screws

A (1:1)




Dept.	Technical reference	Created by Victoria Magniant 11/05/2023	Approved by	
 VICTORIA MAGNIANT		Document type	Document status	
		Title ASSEMBLAGE - APPLIQUE TAKOSU 300	DWG No.	
		Rev.	Date of issue	Sheet 2/3

4- Connect cables
to electrical output
with wagos



5- Fix the sconce to the wall plate

6-Turn the electricity
back on

Dept.	Technical reference	Created by Victoria Magniant 11/05/2023	Approved by	
 VICTORIA MAGNIANT		Document type	Document status	
		Title ASSEMBLAGE - APPLIQUE TAKOSU 300	DWG No.	
		Rev.	Date of issue	Sheet 3/3