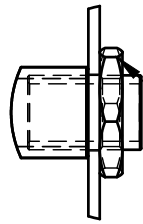


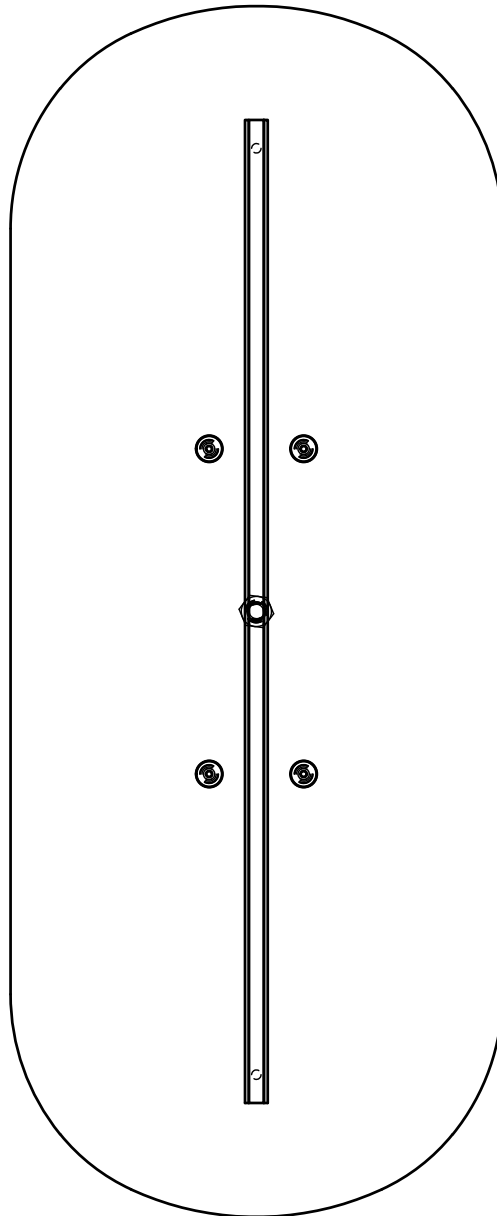
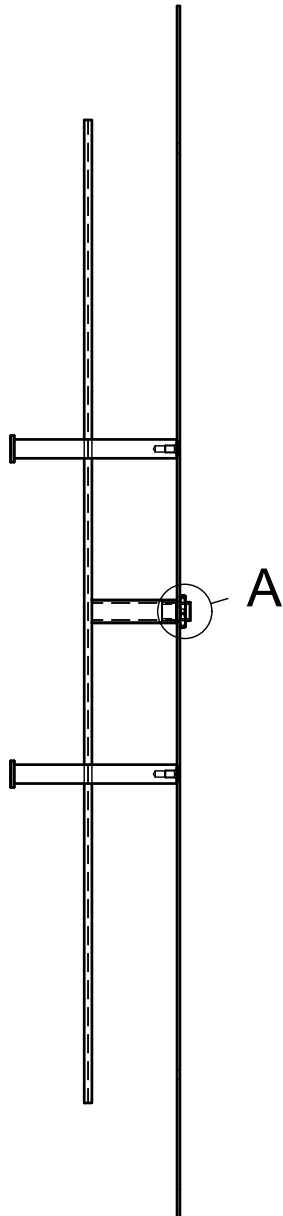
Dept.	Technical reference	Created by <b>Victoria Magniant 28/06/2023</b>	Approved by		
		Document type	Document status		
		Title <b>ENSEMBLE - APPLIQUE ASTRA XL IP44</b>	DWG No.		
		Rev.	Date of issue	Sheet <b>1/4</b>	

A (1:1)



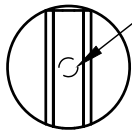
1-Turn of the electricity

2- Fix the LED Profil to the wall plate with the brass bolt

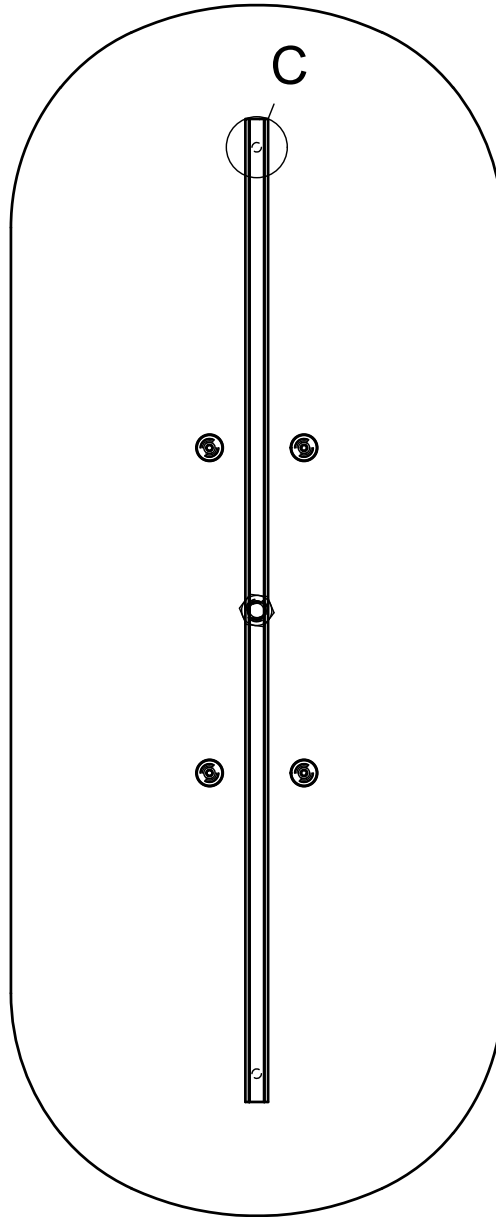
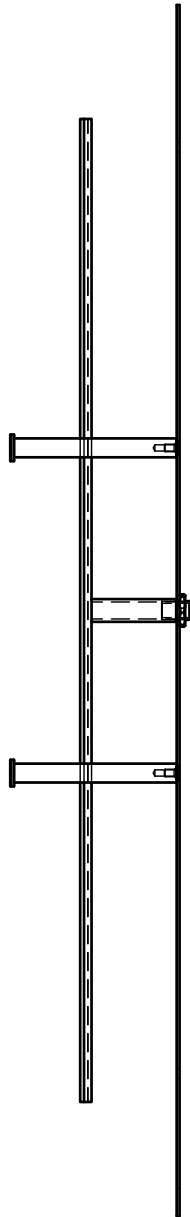


Dept.	Technical reference	Created by Victoria Magniant 28/06/2023	Approved by		
		Document type	Document status		
		Title ENSEMBLE - APPLIQUE ASTRA XL IP44	DWG No.		
		Rev.	Date of issue	Sheet 2/4	

C (1:2)



3-Fix the plate to the wall using brass screws

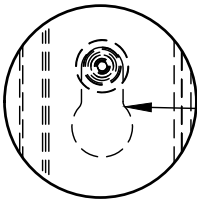


4-Fix the driver to the electric meter.

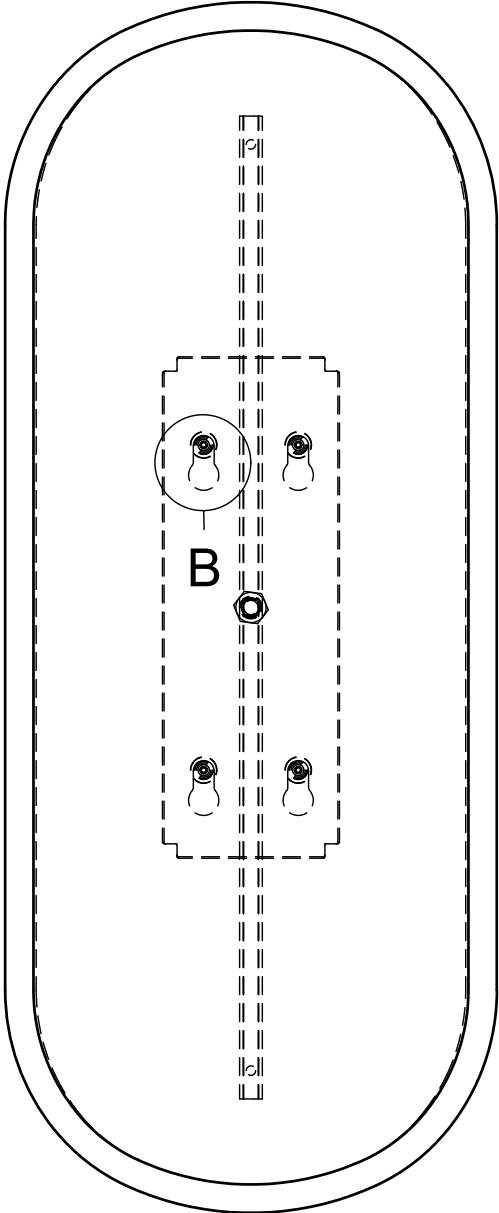
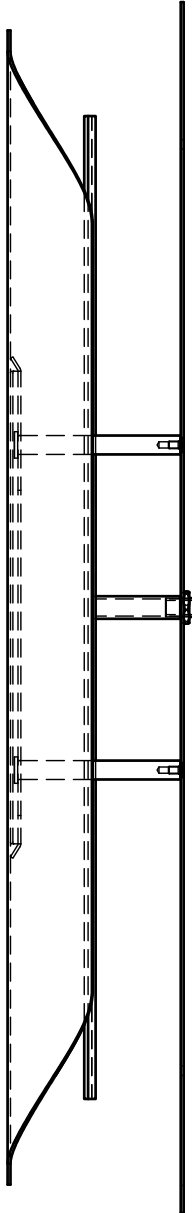
Dept.	Technical reference	Created by Victoria Magniant 28/06/2023	Approved by		
		Document type	Document status		
		Title ENSEMBLE - APPLIQUE ASTRA XL IP44	DWG No.		
		Rev.	Date of issue	Sheet 3/4	

5- Turn electricity on to test connection.

B (1:2)



6-Slide the shade into the holes until it is centered with wall plate.



Dept.	Technical reference	Created by <b>Victoria Magniant 28/06/2023</b>	Approved by		
		Document type	Document status		
		Title <b>ENSEMBLE - APPLIQUE ASTRA XL IP44</b>	DWG No.		
		Rev.	Date of issue	Sheet <b>4/4</b>	