

# Momentum 1000mg Lab Test


At Karavie, our goal is to produce the purest end product possible. In order to do so, we test your CBD at each step of our production process.

## LOT # 11523-B1

 **01**  
HEMP TEST

- + Pesticide Test
- + Under legal limit of 0.3% THC

Our U.S. cultivation partners pledge, through an affidavit, to adhere to organic farming standards. They undergo initial testing to ensure no evidence of harmful pesticides and confirm that THC content remains under the legal threshold of 0.3%

 **02**  
EXTRACTION TEST

- + Cannabinoid Profile Test
- + Under legal limit of 0.3% THC

After the plants meet our standards of quality, they are transported to our dedicated CO<sub>2</sub> extraction site. We then again verify that the oil meets the 0.3% threshold and undertake a thorough analysis of its potency and unique cannabinoid composition

 **03**  
FINAL TEST

- + All previous tests taken one last time

Before dispatching to your residence, we conduct a concluding evaluation of each batch, cross-checking our partners' results for quality, composition, and strength. The results are shown below.

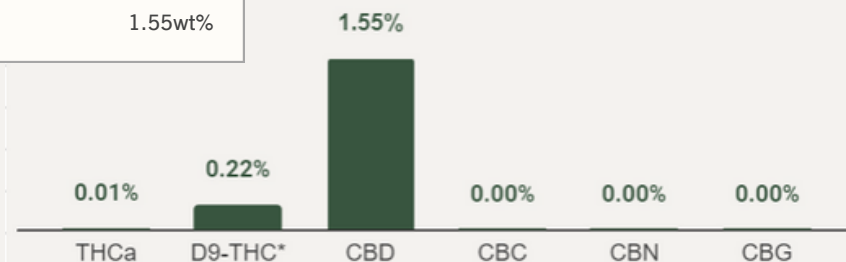
CBD Profile + Potency

Total:	1.78wt%
Max THC:	0.23wt%
Max CBD:	1.55wt%

Pesticides Test + Passed

Heavy Metals + Passed

Microbiology Test + Passed



**Product Description:** Hemp CBD Cocoa Butter Lotion 1000mg/70.9g CBD 150mg/70.9g D9 DIW, OVCO, EWX, OCOB, OEVO, VTE, OPTE, ISO, MTH, ARO AEP, OTP, KSO, TCA, OCML, RC2

**Invoice Number:** 2023-145.1

**Lot Number:** LTN-11523-B1

**Manufacture Date:** Apr 25, 2023

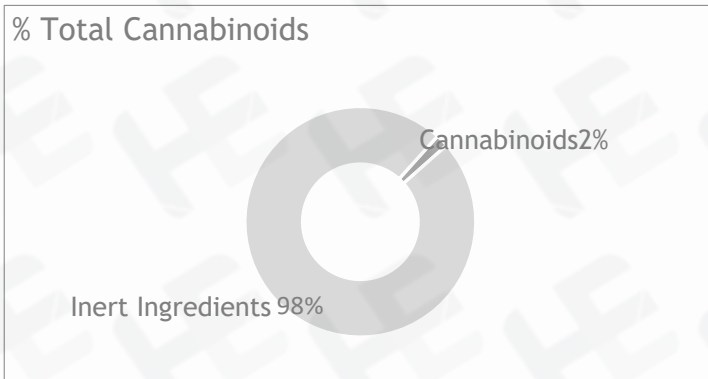
**Product Code:**

LTN-1000-150-ISO-RC2-COB2-OPTE-MTH-ARO- 70.5

**Date of Analysis:** May 04, 2023

**Best By Date:** Apr 25, 2025

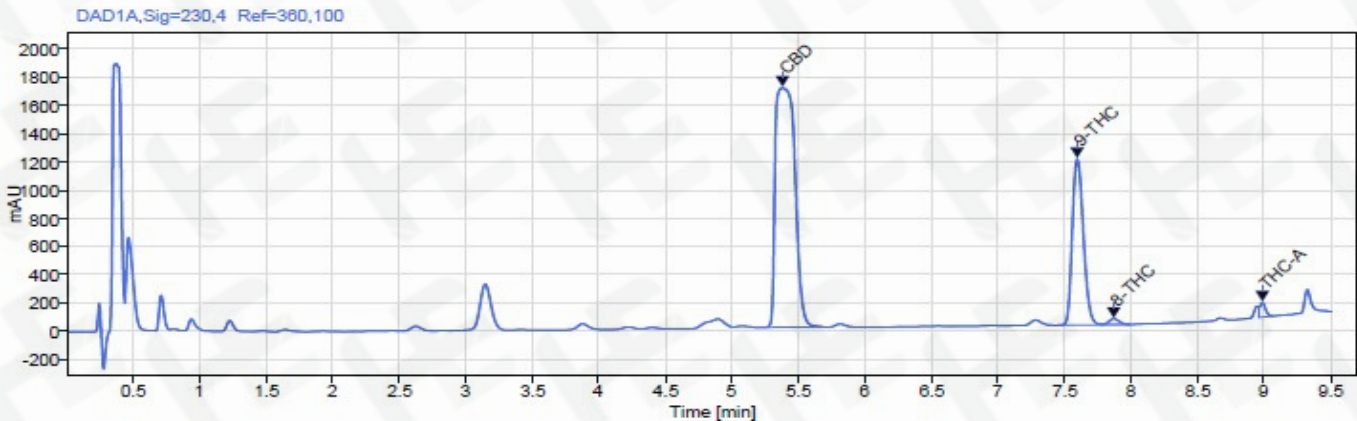
**Cannabinoid Potency - Expected CBD: 14.18mg/g ± 10%**



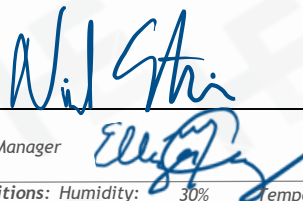
	mg/g%LOQ (mg/g)	15.46 mg/g	1.55% 0.05 mg/g
<b>Total CBD:</b>		15.46 mg/g	1.55% 0.05 mg/g
CBD:		<LOD	<LOD 0.05 mg/g
CBDa:		2.23 mg/g	0.22% 0.05 mg/g
<b>d9-THC:</b>		<LOD	<LOD 0.05 mg/g
CBC:		<LOD	<LOD 0.05 mg/g
CBG:		<LOD	<LOD 0.05 mg/g
CBGa:		<LOD	<LOD 0.05 mg/g
CBN:		<LOD	<LOD 0.05 mg/g
CBDV:		<LOD	<LOD 0.05 mg/g
d8-THC:		0.06 mg/g	0.01% 0.05 mg/g
THCa:			
		<i>(kg/m3) Specific Gravity:1.003</i>	
<b>Density:</b>		1.000	

\*Total d9-THC and CBD are calculated taking into account the loss of a carboxyl group during decarboxylation. The formulas are as follows : d9-THC = d9THC + (THCa \*(0.877)) CBD = CBD + (CBDa \*(0.877))  
\*\*Any compounds with results listed as "<LOD" were below the Limit of Detection and were not detected.  
\*\*\*LOQ is the limit of quantitation for any given analyte.

**Chromatogram**



Prepared By: N. Stasi  
Operations Manager  
May 4, 2023




Reviewed By: E. Casey  
Formulation and R&D Manager  
May 4, 2023



Analyzed via HPLC Under These Conditions: Humidity: 30% Temperature: 76.1 °F

ISO 9001:2015 Certificate Number: US4293

*Certificate of Analysis test results are based only on the analysis of the product listed in the "Product Description" of this form. Hammer Enterprises, LLC, makes no claims as to the efficacy, safety, or other risks associated with any detected or non-detected compounds reported herein. All analyses conducted at Hammer Enterprises, LLC, is performed on well-maintained, quality instruments utilizing Good Laboratory Practices and validated methodology. This Certificate may not be reproduced except in full, without the written approval of Hammer Enterprises, LLC. DISCLAIMER: When reviewing certificate ensure watermark is complete and intact. Watermark will present as repeating HE logos diagonally across the entire page. The authenticity of this document is not guaranteed if there is evident modification, blocking, or alterations of the watermark.*

	<b>Product Specification Sheet</b> <b>CBD Topical Cocoa Butter Lotion</b> <b>w/ Peppermint</b>	<b>Document #:</b> PSS-LTN-ISO-RC2-COB2-OPT-ARO-70.5 <b>Version: 1.0</b> <b>Date: 22SEP2020</b> <b>Supersedes: NEW</b>
	<b>Full-Spectrum</b>	<b>Completed By: NJS</b> <b>Invoice #: 2023-145.1</b>
<b>30616 Bryant Drive</b> <b>Evergreen, CO 80439</b>	<b>Product Code:</b> LTN-1000-150-ISO-RC2-COB2-OPT-ARO-70.5	

**SECTION 1: PRODUCT DETAILS**

<b>PRODUCT NAME</b>	CBD Topical Cocoa Butter Lotion,Peppermint,Full-Spectrum
<b>PRODUCT DESCRIPTION</b>	Hemp-derived Cannabidiol(CBD) Cocoa Butter Lotion,Peppermint,Full-Spectrum
<b>INTENDED USE</b>	For external topical use only. Do not apply on broken skin or open wounds.

<b>COUNTRY OF ORIGIN</b>	USA LOT# LTN-11523-B1		
<b>MANUFACTURE DATE</b>	Apr25,2023	<b>CBD POTENCY</b>	1089.93mg/Container
		<b>d9-THC POTENCY</b>	157.22mg/Container
<b>BEST BY DATE</b>	Apr25,2025	<b>NET WEIGHT</b>	2.5oz(70.50g) per container

**SECTION 2: INGREDIENT INFORMATION**

<b>INGREDIENTS LIST</b>
<p>Ingredients: Deionized Water,Organic Virgin Cold Pressed Coconut Oil, Emulsifying Wax NF, Organic Unrefined Cocoa Butter, Organic Extra Virgin Olive Oil, Vitamin E, Organic Peppermint Oil, Hemp Cannabidiol (CBD) Isolate, Menthol, Arnica Oil, Aloe Powder, Optiphen plus (preservative), Potassium Sorbate (preservative), Citric Acid (preservative), Organic Chamomile Oil,</p> <p>Hemp  RC (rare cannabinoid) Oil.  (&lt;0.3% THC)</p> <p><b>The FDA has not evaluated this product for safety or efficacy. This product is not intended to diagnose, treat, cure or prevent any disease.</b></p> <p><b>d9-THC per container: 157.22 mg/70.5g (2.23mg/g)</b></p>

**SECTION 3: STORAGE AND HANDLING**

<b>STORAGE AND HANDLING</b> Store in original container in a cool, dark place. Keep out of direct light and humidity.
---

*This document is provided for documentation purposes only. The information contained herein is believed to be accurate and represents the best information currently available to Hammer Enterprises Integrated Solutions, LLC. However, Hammer Enterprises Integrated Solutions, LLC makes no warranty, expressed or implied, regarding such information, and assumes no liability resulting from its use. Users should make their own investigations to determine the information suitability for their particular purposes. If there are any questions concerning the information contained in this sheet or its applicability to a particular use, the user is instructed to contact Hammer Enterprises Integrated Solutions, LLC. Hammer Enterprises Integrated Solutions, LLC assumes no responsibility for injury from the use of the product described in this sheet in a way different from that provided in the label direction*