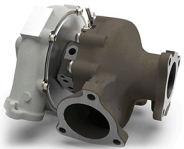


*Product rendering shown. Actual product may have minor variances.*



**PowerMax™ Direct fit Turbocharger Upgrade (Supports up to 164kW \*)**

Part Number 881604-5001S is compatible with 2007 - 2018 Toyota Land Cruiser 4.5L turbo diesel

\*Performance results of this product are highly dependent upon your vehicle's modifications and tuning. The power represented above was recorded on a chassis dyno with a modified ECU and OEM fuel delivery system enabling the engine to produce 164kW from the OE standard 151kW.

# PowerMax™ Turbocharger Upgrade

Direct replacement for 2007-2018 Toyota Land Cruiser 4.5L 1VD-FTV turbo diesel

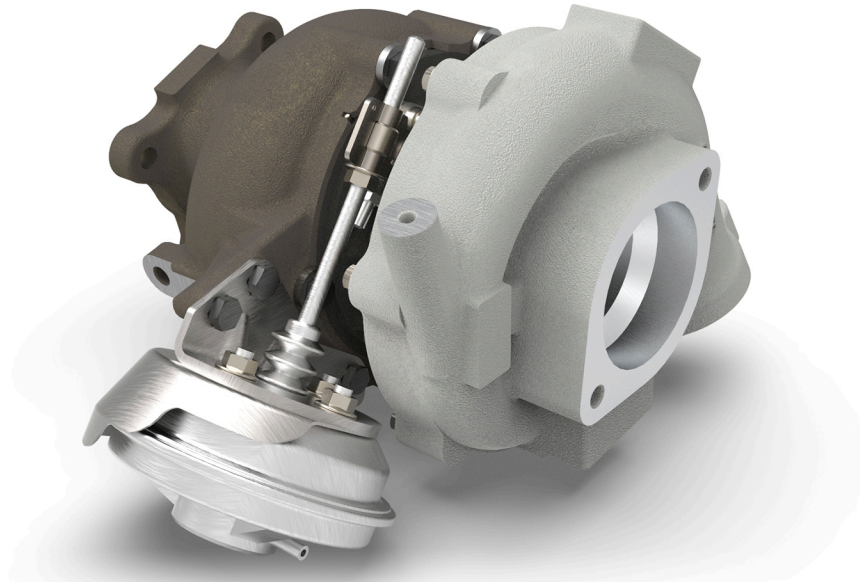
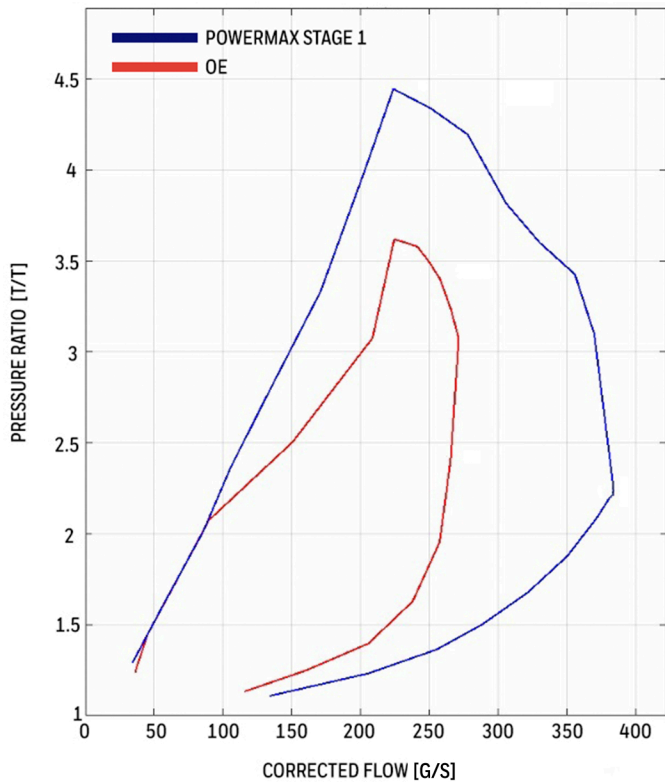
Supports up to 164kW\*

This Garrett® PowerMax™ direct fit turbocharger is designed for the 4.5L 1VD-FTV V8 diesel engine platform found in the 2007-2018 Toyota Land Cruiser. The forged, fully machined compressor wheel designed for the G Series product line increases flow by 20% over the OE wheel. Performance results of this product are highly dependent upon your vehicle's modifications and tuning. The power represented above was recorded on a chassis dyno with a modified ECU and OEM fuel delivery system enabling the engine to produce 164kW from the OE standard 151kW. All Garrett PowerMax™ direct fit turbochargers are outline interchangeable with the OE turbocharger ensuring a perfect fit every time.

## FEATURES:

- G Series compressor wheel aerodynamics
- Wider compressor map for improved performance
- 20% more flow than the OE turbocharger
- VNT variable geometry technology

Compressor Map Comparison Garrett® PowerMax™ vs OE



\* Product rendering shown. Actual product may have minor variances.

Turbo	Power Max PN	881604-5001S
	Model	GTA2359V
	Interchangeable with OE PN	775095-0001 (5001S) 842127-0001 (5001S)
Vehicle	Make	Toyota
	Model	Land Cruiser
	Year	2007-2018
Engine	Type	4.5 L 1VD-FTV V8 turbo diesel
	Fuel	Diesel
	Emissions	Euro IV
	Cylinders	8