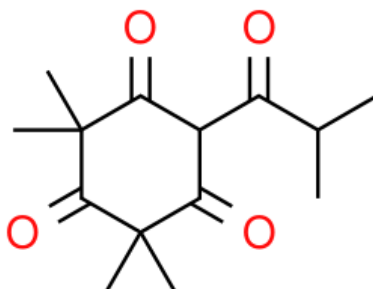


## Compound Data Sheet

**Structure:**



Name	Flavesone
Epichem Code No	EPL-EG12 Batch 3
CAS	22595-45-5
Molecular Formula	C <sub>14</sub> H <sub>20</sub> O <sub>4</sub>
Molecular Weight	252.31 g/mol
Purity	97.75% at 230 nm by HPLC (assuming all components detected with the same response factor) <sup>1</sup> H NMR consistent with structure LCMS [ESI]: 253.1 [M+H] <sup>+</sup> , 251.1 [M-H] <sup>-</sup>
Appearance	Pale amber oil
Date of Manufacture	29 <sup>th</sup> April 2021
Storage Requirements	Protect from heat, light and moisture
Special Precautions	<b>This compound is for laboratory use only. Its toxicological properties may not have been fully established. It should be handled only by suitably qualified personnel.</b>

James Rixson  
Head of Production

11 January 2023