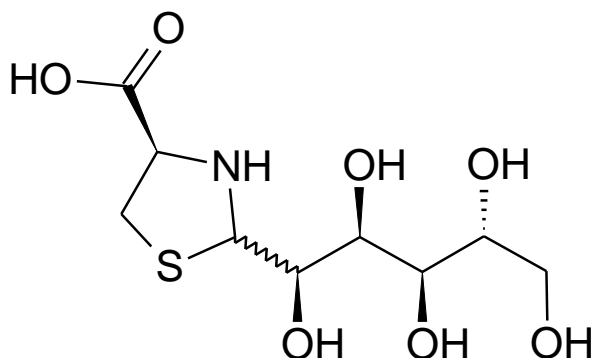


Certificate of Analysis

Structure:



Name	L-cysteine D-glucose
Synonym(s)	None
Epichem Item #	EPL-AA91 Batch 6
CAS #	232617-16-2
Molecular Formula	C ₉ H ₁₇ NO ₇ S
Molecular Weight	283.30 g/mol
Purity	99.6% (weight/weight) ¹ H NMR consistent with structure and showed no significant impurities. 0.2% water by Karl Fischer method. 0.2% ash.
Microanalysis	Required (%): C:38.2; H:6.0; N:4.9; S:11.3. Found (%): C:37.9; H:6.1; N:4.4; S:11.6.
Appearance	White powder
Melting Point	162.2-169.5°C (decomposition)
Date of Manufacture	24 July 2018
Storage Requirements	Protect from heat, light and moisture.
Special Precautions	This compound is for laboratory use only. Its toxicological properties may not have been fully established. It should be handled only by suitably qualified personnel.