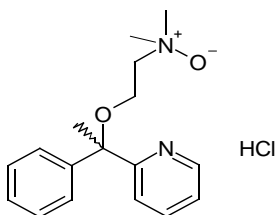


Certificate of Analysis

Structure:



Name	doxylamine- <i>N</i> -oxide hydrochloride
Synonym(s)	(<i>RS</i>)-dimethyl-(2-(1-phenyl-1-(pyridin-2-yl)ethoxy)ethyl)amine oxide hydrochloride; (<i>RS</i>)- <i>N,N</i> -dimethyl-(2-(1-phenyl-1-(pyridin-2-yl)ethoxy)ethanamine- <i>N</i> -oxide hydrochloride
Epichem Item #	EPL-AA49 Batch 1
CAS #	Not available
Molecular Formula	C ₁₇ H ₂₂ N ₂ O ₂ .HCl
Molecular Weight	322.84g/mol
Purity	93.0% (weight/weight) 97.5% by HPLC at 210nm (2.5% doxylamine) and 97.6% at 262nm (2.4% doxylamine) (assuming all components detected with the same response factor). ¹ H NMR analysis showed doxylamine present consistent with HPLC results, and 2.2% (weight/weight) dichloromethane. 2.15% water by Karl-Fischer method. 0.13% ash.
Appearance	Off-white powder
Melting Point	118-120°C
Date of Manufacture	24 August 2009
Storage Requirements	Protect from heat, light and moisture
Special Precautions	This compound is for laboratory use only. Its toxicological properties may not have been fully established. It should be handled only by suitably qualified personnel.

Robert Gauci
General Manager
2 September 2009