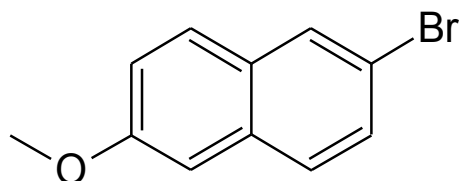


Certificate of Analysis

Structure:



Name	2-bromo-6-methoxynaphthalene
BP Name	Naproxen Impurity N
Synonym(s)	6-methoxynaphth-2-yl bromide
Epichem Item #	EPL-AA187 Batch 1
CAS #	5111-65-9
Molecular Formula	C ₁₁ H ₉ BrO
Molecular Weight	237.09 g/mol
Purity	99.8% (weight/weight). 100% at 220 nm by HPLC (assuming all components have the same response factor). No significant impurities detected by ¹ H NMR analysis. 0.13% water by Karl-Fischer method. 0.06% ash.
Combustion Analysis	Required (%): C:55.7; H:3.8; N:0.0. Found (%): C:55.7; H:4.0; N:0.0.
Appearance	White powder
Melting Point	107.2-108.2°C
Date of Manufacture	14 December 2015
Storage Requirements	Protect from heat, light and moisture.
Special Precautions	This compound is for laboratory use only. Its toxicological properties may not have been fully established. It should be handled only by suitably qualified personnel.

John Moursounidis, PhD
Head Fine Chemicals and Technical Services
7 April 2016