

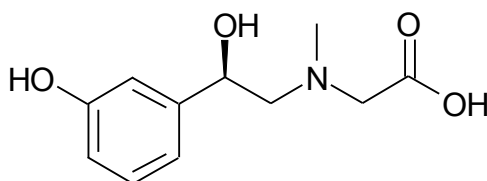
## Certificate of Analysis

\*\*\*Revised 12 December 2016

\*\*Revised 27 February 2017

\*Revised 8 May 2017

### Structure:



Name	<i>N</i> -(carboxymethyl)phenylephrine
Synonym(s)	(((2 <i>R</i> )-2-hydroxy-2-(3-hydroxyphenyl)ethyl)(methyl)amino)acetic acid Phenylephrine Related Compound G*
Epichem Item #	EPL-AA138 Batch 2
CAS #	1094089-46-9*
Molecular Formula	C <sub>11</sub> H <sub>15</sub> NO <sub>4</sub>
Molecular Weight	225.25 g/mol
Purity	95.5% (weight/weight)* 99.8% by HPLC at 220nm (assuming all components detected with the same response factor).** May exist in equilibrium with corresponding lactone (6 <i>R</i> )-6-(3-hydroxyphenyl)-4-methylmorpholin-2-one.* 4.3% water by Karl Fischer method.* 0.03% ash.
Combustion Analysis	C <sub>11</sub> H <sub>15</sub> NO <sub>4</sub> Required (%): C:58.7; H:6.7; N:6.2; Found (%): C:56.7; H:7.1; N:6.2.*
Appearance	White solid
Melting Point	161.2-167.2°C*
Date of Manufacture	24 March 2014
Storage Requirements	Hygroscopic. Protect from heat, light and moisture***
Special Precautions	<b>This compound is for laboratory use only. Its toxicological properties may not have been fully established. It should be handled only by suitably qualified personnel.</b>