

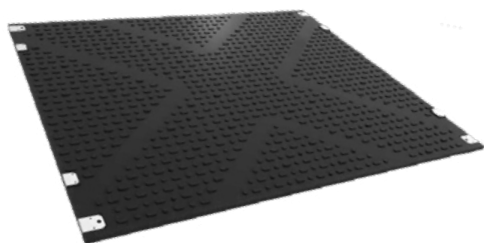


K-Mat Heavy Duty Roadway Panels

A temporary and portable Heavy Duty Roadway Panel, designed to provide Temporary Access and Ground Protection for extremely heavy plant and machinery, used in a wide variety of applications and key industries.



With safety in mind, the K-Mat Heavy Duty Roadway Panels incorporate a dual grip design, featuring a high profile traction surface for vehicles on one side, and a unique non-slip traction surface for increased grip for pedestrians and contractors.



A variety of steel fabricated stillages are available

Specifications

Size	3m (L) x 2.5m (W) x 40mm (D)
Weight	295Kg
Load	Suggested 100 tonnes, weight tested up to 160 tonnes (depending on ground conditions)
Material	100% Recycled Ultra High Molecular Weight Polyethylene (UHMWPE) and 100% recyclable
Colour	Black as standard. Other colours available (subject to minimum order quantities)

Key Features

- ✓ High profile traction surface for vehicles, underside low profile non-slip surface for pedestrians.
- ✓ Fast, effective and simple connection system
- ✓ Ability to support extremely heavy loads in a wide variety of weather conditions
- ✓ Avoids health and safety issues and is non-conductive
- ✓ Avoids property, heritage and environmental damage
- ✓ Avoids vehicles from becoming bogged down, saving valuable time and money
- ✓ Various connection options

Budget Options

Perhaps you don't have the budget to purchase outright, we always here a variety of solutions for you.

- Hire for short or long term
- Buyback
- Lease or Finance

Top Tip

We can apply reflective markings for safety in low visibility or night conditions as an option.

As an alternative option, please take a look at Hardwood Timber Bog Mats or Steel Road Plates.



Civil Engineering /Infrastructure



Construction Sites



Military Sites

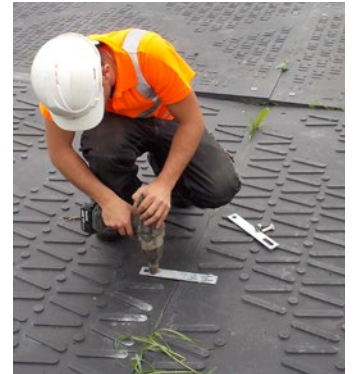


Access Routes and Temporary Car Parks

How are they connected?

We offer a variety of connection methods to suit varying ground conditions and applications.

The simplest way to install the mats is to place them onto the ground where required and secure into place using the suitable metal strap connectors.



Installation timings

Specialist lifting equipment such as Hiab or heavy duty forklift is required, as well as mechanical fixing to install the mats.



Specialist lifting equipment is required



Single line connection in 5 mins



Grid connection in less than 15 mins



300m² area in approx. 2 hours (depending on ground conditions and site layout)



When driving on the mats, do not exceed 5mph



Eco-friendly and long lasting

Made from 100% Recycled Ultra High Molecular Weight Polyethylene (UHMWPE) which is also 100% recyclable.

We advise not to use Steel Tracked vehicles with any composite mats unless pre-authorized and agreed beforehand, traversing, and aggressive movement on the mats may cause damage to them and the connectors, and this will be the sole responsibility of the customer and user of the mats.