



FLARE™ WINDSHIELD FOR HONDA GOLDWING

TOOLS NEEDED FOR INSTALLATION:

- 10mm box end wrench
- 8mm nut driver or 8mm socket and ratchet
- plastic putty knife

NOTE:

Klock Werks Flare™ Windshield uses all of the stock mounting hardware. Instructions lead you through removing the stock shield and hardware, and re-installing the Flare™.

QUESTIONS?



EMAIL:
info@getklocked.com
CALL: (605) 996.3700



1. Unlock windshield adjustment levers (move lever to UP position)



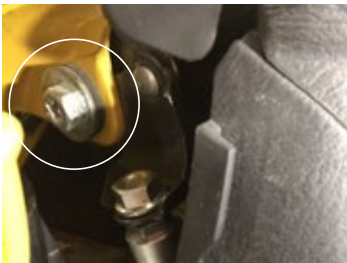
7. Rotate black garnish cover to expose the 5mm fastener beneath it. Use an 8mm wrench to remove it.



2. Release mirror boots from outer fairing



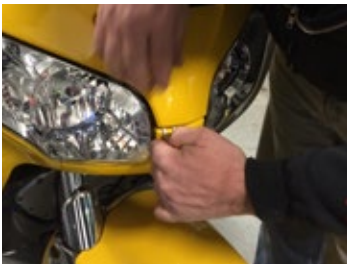
8. Gently fold the mirrors back and remove the front fairing assembly



3. Gently fold the mirrors forward to expose the 6mm fairing mount bolts



9. Using a #3 Phillips screwdriver, remove the four outer windshield mounting screws and plates



4. Place a rag underneath the mounting bolts to help prevent them from falling into the fairing



5. Using a 10mm wrench, remove the two mounting bolts



6. Use a plastic putty knife or similar non-abrasive tool, gently lift the nose of the fairing off of the four grommets in the lower fairing

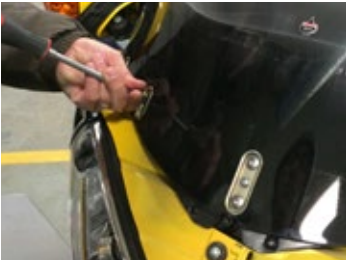


10. Remove the two center shoulder bolts with a 5mm Allen wrench and remove windshield

INSTALLATION CONTINUED



11. Loosen the center Phillips mount plate screw and remove the two center plates



12. Install your new Flare™ Windshield with the hardware from step 9 and 10



13. Carefully reassemble the fairing assembly and check the ratchet system by raising and lowering the windshield

Using a lubricant may aid in reseating the mirror boot tabs into the fairing



VENT REPLACEMENT

1. Remove the two button head fasteners holding the vent halves together
 - a. The vent shown uses a 3mm allen wrench and an 8mm socket
2. Disconnect the small plastic tab at the bottom of the vent
3. Rock the inner half up and off of the lip of the outer half and the two pieces should release from the windshield
4. Install the vent in reverse order into your new Klock Werks vented Flare™ windshield.

WARNING! Using Loctite® or any type of thread locker on hardware will result in breakdown of the Polycarbonate and cause cracking.

Klock Werks cannot be held responsible for any damage resulting from improper installation performed by any consumer or their dealer.

U.S. Pat. No. D586,274; D632,235; D586,275; D633,017; D626,046; D633,018 Pat. 001050165-0001, 001050165-0002, 001050165-0003 APO No. 324093, 324094, 325192