

Klock Werks

915 S. Kimball
Mitchell, SD 57301

Sales: (605) 996.3700

Email: info@getklocked.com

www.getklocked.com



*Thank you for purchasing from Klock Werks. Please read through **ALL** of the instructions before beginning the installation.*

Klock Werks Upper Fillers

HARDWARE INCLUDED:

- (2) Klock Werks upper fillers
- (2) 5/16" x 1/2" spacers
- (2) 5/16" x 1/4" spacers
- (4) 5/16" x 1-1/4" hex bolts
- (4) 5/16" nylock nuts
- (2) 1/4" washers
- (2) 1/4" x 1-1/2" hex bolts
- (2) Strut support brackets (directional)

TOOLS NEEDED:

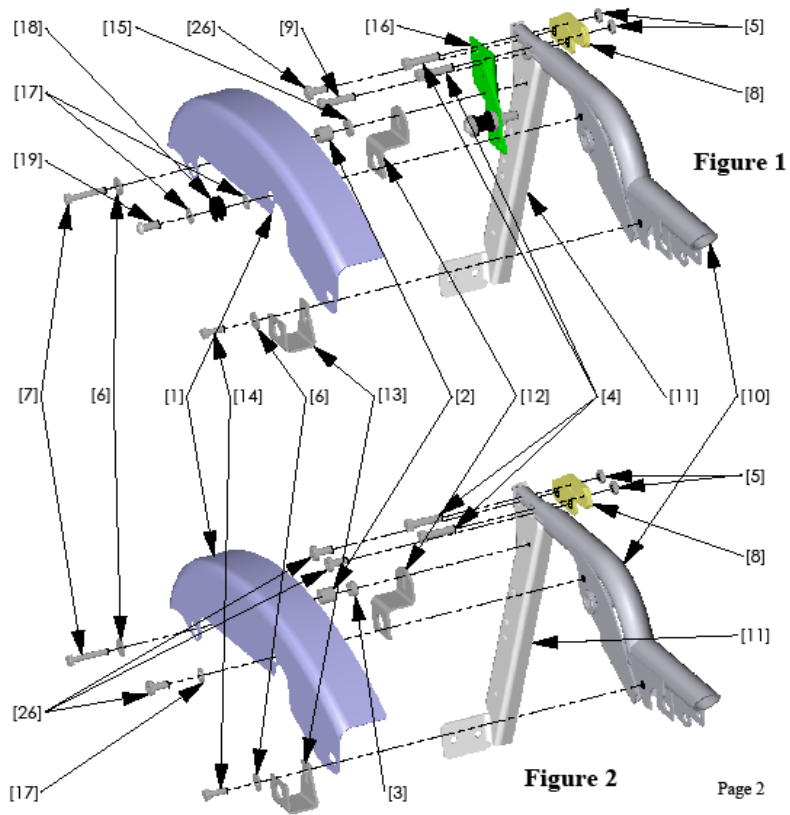
Standard 3/8" drive socket set
Standard open end wrench set
Torx drive set
Screw drivers set
Loctite

INSTRUCTIONS:

Refer to the diagram on page 2 for proper hardware locations. Parts in the instructions are referenced to their corresponding parts on the diagram using [#].

Note: When using a detachable backrest, use Figure 1 on page 2. When using a stock configuration, use Figure 2 on page 2.

1	KW05010002
2	$\frac{3}{16}$ x $\frac{1}{2}$ in. Spacer
3	$\frac{3}{16}$ x $\frac{1}{2}$ in. Spacer
4	$\frac{3}{16}$ -18 x 1 $\frac{1}{4}$ in. Hex Bolt
5	$\frac{3}{16}$ -18 in. Nylon-Insert Locknut
6	$\frac{1}{4}$ in. Washer
7	$\frac{1}{4}$ -20 x 1 $\frac{1}{4}$ in. Hex Bolt
8	Strut Support Bracket
9	$\frac{3}{16}$ -18 x 1 in. Hex Bolt
10	Stock Strut
11	Stock Bag Support Arm
12	Stock Rear Bag Bracket
13	Stock Front Bag Bracket
14	$\frac{1}{4}$ -20 x $\frac{3}{4}$ in. Hex Bolt
15	$\frac{1}{2}$ x $\frac{1}{2}$ in. Spacer
16	Mount Bracket
17	$\frac{3}{16}$ in. Narrow Washer
18	Front Docking Point
19	$\frac{3}{16}$ -18 x 1 in. Socket Button Head Cap Screw
20	$\frac{3}{16}$ -18 x 2 $\frac{1}{4}$ in. Socket Button Head Cap Screw
21	$\frac{3}{16}$ in. Spring Lockwasher
22	Front Docking Point
23	$\frac{3}{16}$ x $\frac{1}{2}$ in. Spacer
24	Tour Pak Frame
25	$\frac{3}{16}$ -18 x $\frac{1}{2}$ in. Hex Bolt
26	$\frac{3}{16}$ x $\frac{3}{4}$ in. Torx Bolt



Klock Werks Bagger Filler Installation Instructions

We recommend you fully install your fillers prior to having them painted or powder coated. This is a simple precaution to minimize wasted time and expense. Check to ensure that all holes line up and that the fillers do not contact the fender or saddlebags. Please read all the way through these instructions before beginning the installation process.

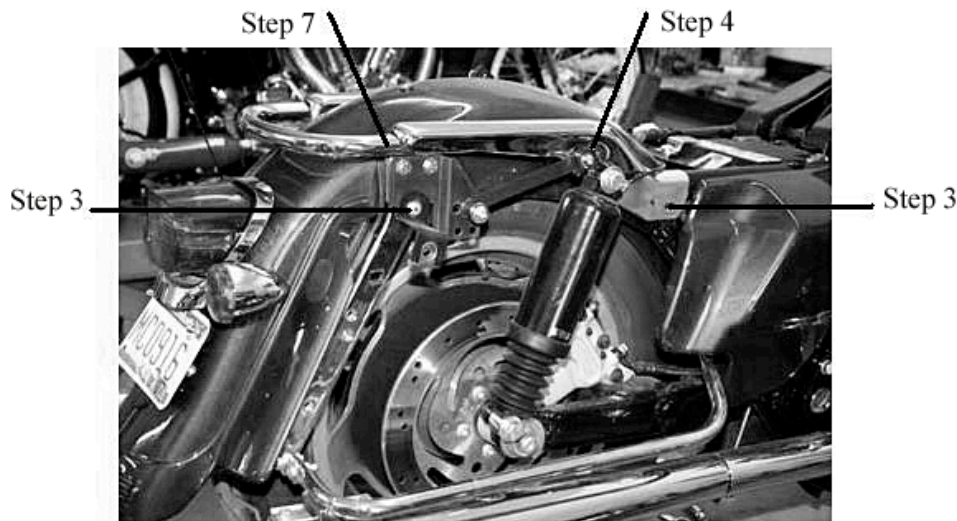


Figure 3

1. Remove your saddle bags by turning the two bail head screws inside the saddle bags and place them in a safe location.
2. Remove the mounting screw on the rear of the seat remove it. Place the seat in a safe location.
3. Using a 7/16" wrench or socket, remove the 1/4" hex bolts [14] and the saddle bag mounting brackets [12] and [13] and any detachable hardware that may be installed.
4. Remove the chrome strut covers by removing the bolt located near the shock mount.
5. Using a 1/2" wrench and socket, remove the four 5/16" x 1" hex bolts connecting the chrome bar to the struts [10]. Save two of these bolts for later use.
6. Using a Torx driver, remove the two 5/16" Torx bolts connecting the chrome bar to the bag support arm [11].
7. Slide the chrome bar to the rear of the bike in order to remove it.

- Using 5/16" x 1-1/4" hex bolts [4] and 5/16" nylock nuts [5], attach the top two holes of the strut support brackets [8] to the struts [10] as shown in Figure 4.

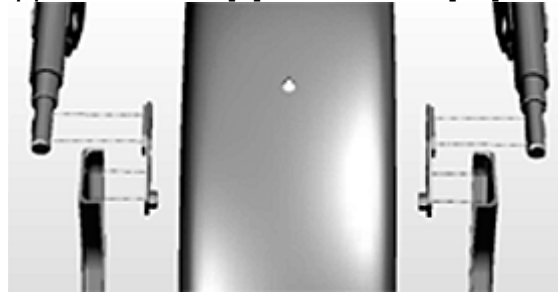


Figure 4

- For Detachable Backrest: Using the 5/16" x 1" hex bolt saved from step 5 and a 5/16" x 3/4" Torx bolt removed in step 6; attach the detachable backrest mount plate [16] to the saddlebag support arm [11] and the strut support bracket [8] as shown in Figure 5.

For Stock Configuration: Using the 5/16" x 3/4" Torx bolts removed in step 6, attach the saddlebag support arm [11] to the strut support bracket [8] as shown in Figure 6.

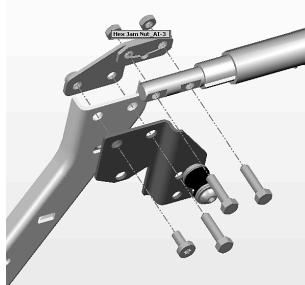


Figure 5

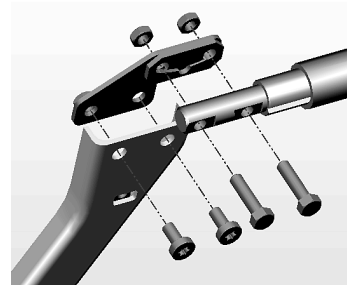


Figure 6

- Place the upper filler [1] on the strut [10], ensuring that the shock mount is aligned with the rounded notch in the center of the filler.
- Install the front bag bracket [13] using the stock 1/4" x 3/4" hex bolt and washer [14]. The bolt should be hand tightened such that the front bag bracket is able to rotate and slide for adjustment.
- For Detachable Backrest: Install the detachable backrest front docking point [18], ensuring there is a 5/16" washer [17] on each side, using the 5/16" x 1" socket button head cap screw [19].

For Stock Configuration: Reinstall the stock bolt and washer that was removed from the chrome strut cover in step 4.
- For Detachable Backrest: Slip the rear bag bracket [12] between the detachable backrest mount plate [16] and the saddlebag support arm [11].

14. For Detachable Backrest: Place the Klock Werks supplied 5/16" x 1/2" spacer [2] and the 1/4" x 1/8" spacer [15] supplied with the detachable backrest mounting kit between the mounting plate [16] and the upper filler [1].

For Stock Configuration: Place the Klock Werks supplied 5/16" x 1/2" spacer [2] and 5/16" x 1/4" spacer [3] between the saddlebag support arm [11] and upper filler [1].

15. Place a 1/4" washer [6] on the 1/4" x 1-1/2" hex bolt [7] and thread the bolt through the square nut clipped on the bag support arm [11] as shown. Use Figure 7 for detachable backrest and Figure 8 for stock configuration.

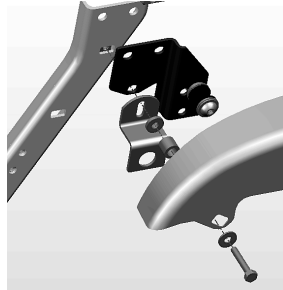


Figure 7

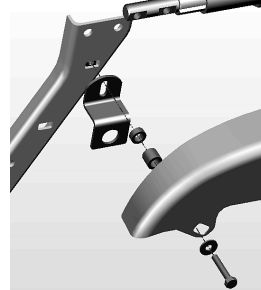


Figure 8

16. Reinstall your saddle bags, adjusting the front and rear bag brackets [12, 13] as necessary. Lock the bail head screws back into position to secure the bags.

17. Using a 7/16" wrench, tighten the 1/4" bolts securing the front and rear bag brackets [12, 13].

18. Inspect your new parts to be sure that no two painted parts are allowed to come into contact with each other. Also, check the fit of any detachable parts. The brackets and hardware that make up the rear fender and bag section of a bagger are made to be adjusted, and may require that you readjust some components after assembly.

19. Reinstall your seat, ensuring to tighten the mounting screw on the back.

20. Take your bike out for a test ride. When you return, check your fasteners and hardware to be sure nothing is coming loose. Readjust and tighten hardware as necessary. You may wish to use a drop of Loctite on the bolts to ensure they do not vibrate loose.

21. Enjoy your new Klock Werks fillers!