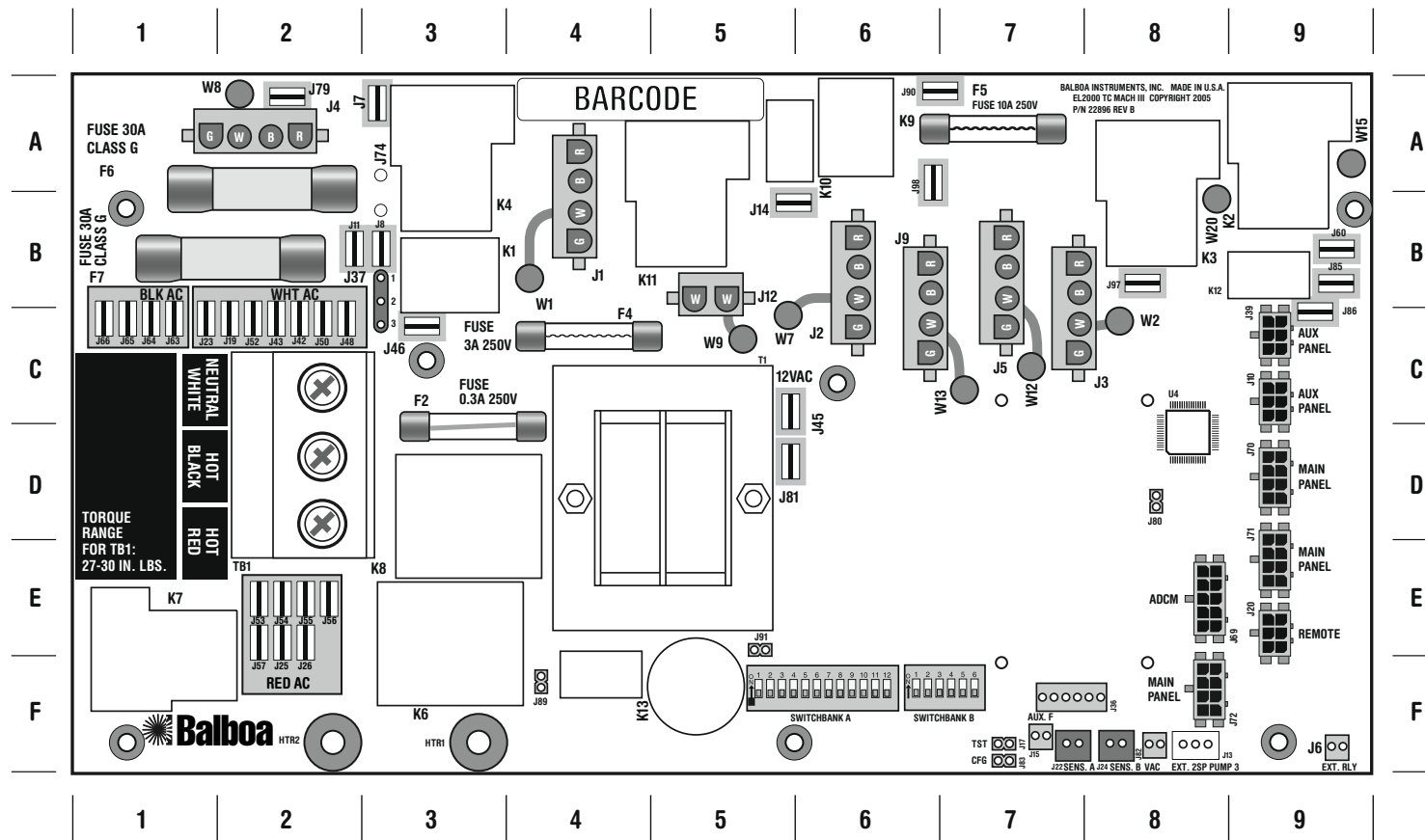


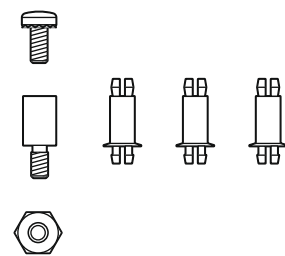
EL2000 Mach 3 Configuration Guide



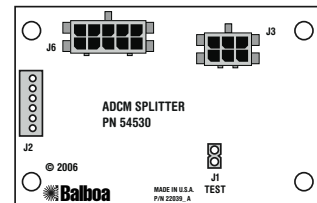
Output Features

Output Features	Quadrant
J1 + W1 – 2-Speed Pump 1	4-A
J2 + W7 – Circ Pump or Fiber Optic (Separate Relay 120V or 240V)	6-C
J3 + W2 – 1-Speed Blower (with 1-speed Pump 2) W15 to J97	7-C
J4 + W8 – Audio Visual (always hot - no relay)	2-A
J5 + W12 – 2-Speed Pump 2 (with NO Blower on J3) W15 to J98	7-C
J9 + W13 – OR 1-Speed Pump 3 (with 1-speed Pump 2) W15 to J97	
J12 + W9 – OR 1-Speed Pump 2 (See J3/W2)	
J9 + W13 – Ozone (Separate Relay 120V or 240V)	6-C
J12 + W9 – Spa Light (12V or 120V) Check J37 Setting	5-B

Quadrant

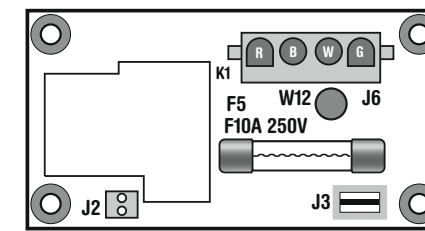


X-Mount P **PN 53933**
 Used for mounting any Expander Board in a plastic enclosure.
 Standoffs attach to heater mounting bracket.

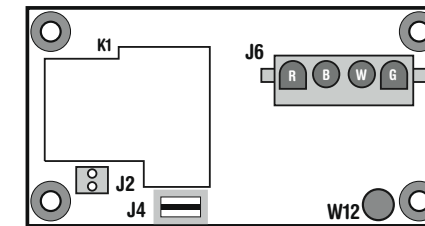


ADCM SPLITTER KIT **PN 54530**
 Required when using a Menu-driven panel. Kit includes PCB, stand-offs, and cable.
 Note: Software v29 or higher required.
 • J2 connects to ADCM IN (J69) on main PCBA.
 • J3 connects to Menu Panel or Transceiver.
 • J6 connects to tester or F.A.S.T. station.

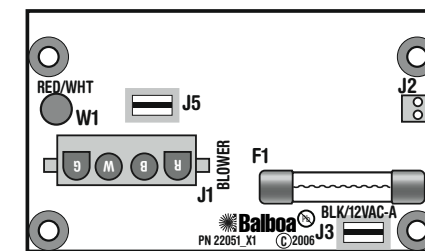
EL2000 Mach 3 Expander Board Options



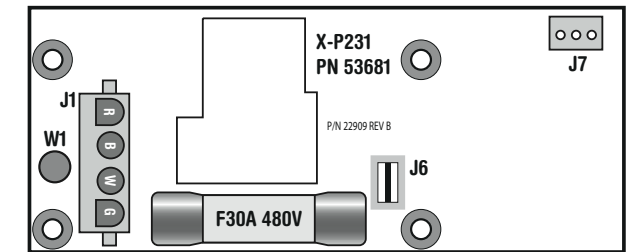
X-B **PN 53310**
 Used for a 1-speed Blower output ONLY.
 • W15 (9-A) connected to J98 (8-B)



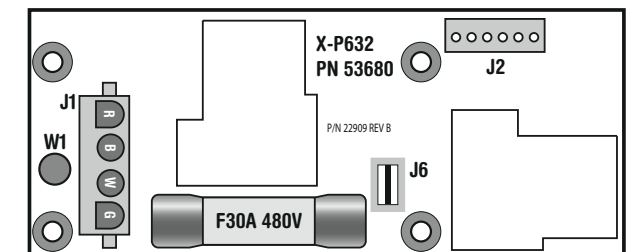
X-P **PN 53544**
 Used for a 1-speed Pump or Mister output.
 • W15 (9-A) connected to J97 (9-B)



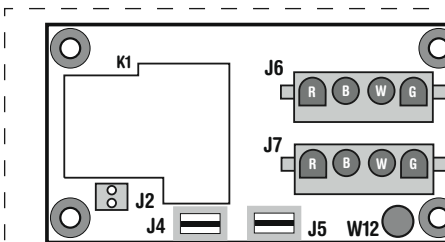
X-TB **PN TBD**
 Used for a multi-speed Blower (requires v29+ software and “bL” set to “2” or “3”)
 Or can be used for a 1-speed Blower.
 • W1 connects to Red or White AC on Main PCBA.
 • J3 connects to Black AC on Main PCBA.
 • J2 connects to J6 (Ext. Rly) on Main PCBA.



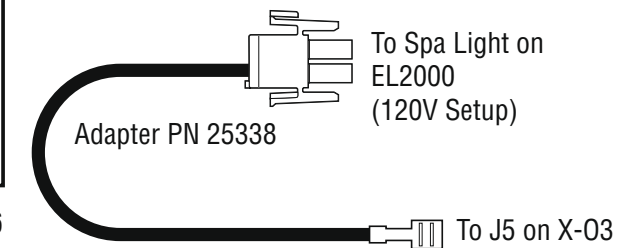
X-P231 **PN 53681**
 Can replace the X-P in cases where branch circuit protection is needed for high amperage devices that would over-burden power input fuse F7 (1-B) on the main PCBA. This allows J6 on the X-P231 to connect directly to Black AC (1-C) on the main EL2000 PCBA.



X-P632 **PN 53680**
 Used for a 2-speed Pump output or for two 1-speed Pumps. Can also be used for other optional setups.
 • J6 on X-P632 connects directly to Black AC (1-C) on the main EL2000 PCBA.



X-O3 **PN 53426**



X-FOW Kit **PN 53912**
 Special setup with X-O3 and Adapter PN 25338 to operate a fiber-optic light and color wheel independently. Required to operate a Fiber Optic when a Circ Pump is installed on Main PCBA at J2.