



# COMBINATION VALVE II



AVAILABLE IN 2 SIZES:  
BIG-GUN™ 1½" Inlet/Outlet  
OR  
Standard 1¼" Inlet/Outlet



Robust Iron Housing

2-Piece Body for  
Easier Maintenance

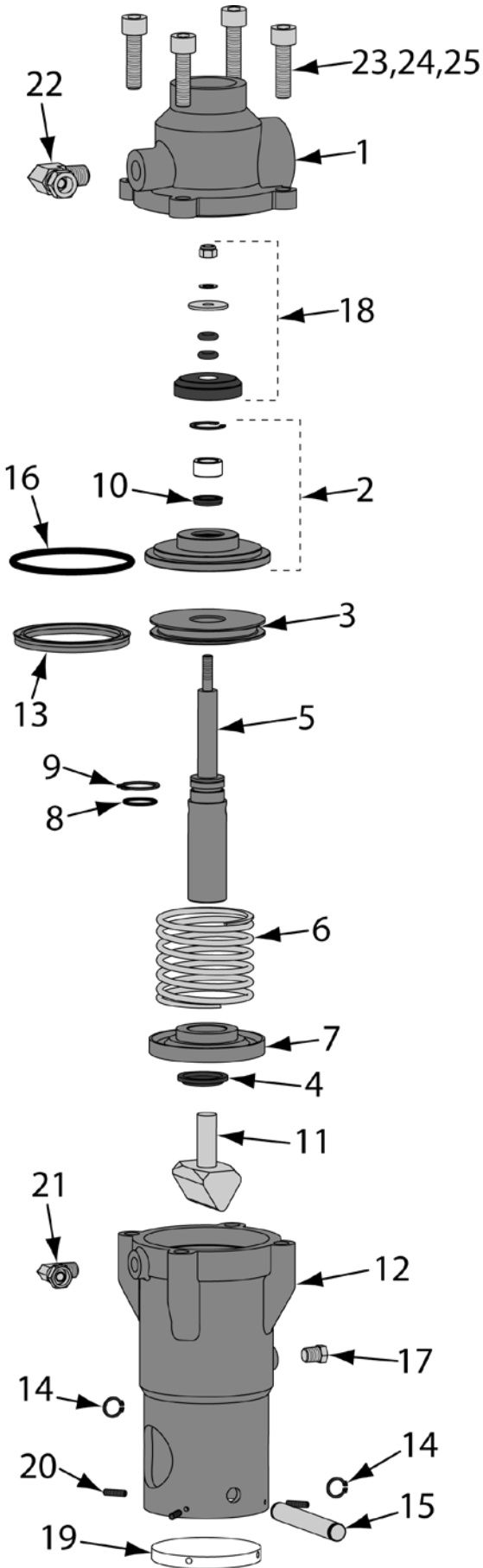


Transparent Pinch  
Hose Inspection  
Window



Filtered Breather Vent

# PARTS & REPAIR KITS



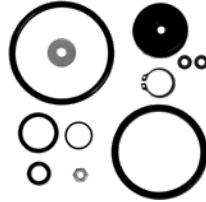
## Complete Valves & Repair Kit



**COMPETE VALVE 1 1/2" BIG-GUN™**  
**PN: 888-2225-001PB**  
 VALVE, COMBINATION II, 1 1/2" BIG-GUN™ COMPLETE



**COMPETE VALVE 1 1/4"**  
**PN: 888-2225-000PB**  
 VALVE, COMBINATION II, 1 1/4" COMPLETE



**REPAIR KIT**  
**PN: 888-2223-00099PB**  
 VALVE, COMBINATION & COMBINATION II, REPAIR KIT, INCLUDES # 4, 8, 9, 10, 13, 16 & 18

## Combination Valve II Parts

1	888-2225-51100PB	VALVE, COMBINATION II, BASE, 1 1/4"
1	888-2225-51101PB	VALVE, COMBINATION II, BASE, 1 1/2" Big-Gun™
2	888-2223-00015PB	VALVE, COMBINATION & COMBINATION II, LOWER ROD GUIDE, INCLUDES SEAL (#10), BUSHING & SNAP RING
3	888-2223-00011PB	VALVE, COMBINATION & COMBINATION II, PISTON
4	888-2223-00004PB	VALVE, COMBINATION & COMBINATION II, SEAL, UPPER ROD
5	888-2223-00012PB	VALVE, COMBINATION & COMBINATION II, SHAFT
6	888-2223-00005PB	VALVE, COMBINATION & COMBINATION II, SPRING
7	888-2225-51500PB	VALVE, COMBINATION II, UPPER ROD GUIDE
8	888-2223-00008PB	VALVE, COMBINATION & COMBINATION II, O-RING, SHAFT
9	888-2223-00009PB	VALVE, COMBINATION & COMBINATION II, SNAP RING
10	888-2223-00010PB	VALVE, COMBINATION & COMBINATION II, SEAL, LOWER ROD
11	888-2223-00002PB	VALVE, COMBINATION & COMBINATION II, PINCH RAM
12	888-2225-51200PB	VALVE, COMBINATION II, CYLINDER
13	888-2223-00013PB	VALVE, COMBINATION & COMBINATION II, SEAL, PISTON
14	888-2225-34900PB	VALVE, COMBINATION II, EXTERNAL CLIP (2 REQUIRED)
15	888-2225-51400PB	VALVE, COMBINATION II, PIN
16	888-2223-00016PB	VALVE, COMBINATION & COMBINATION II, O-RING, LOWER ROD GUIDE
17	888-2014-300PB	VENT, 1/8"
18	888-2223-00018PB	VALVE, COMBINATION & COMBINATION II, PLUG ASSEMBLY
19	888-2225-51300PB	VALVE, COMBINATION II, COVER, CLEAR
20	888-2225-34700PB	VALVE, COMBINATION II, SCREW, COVER (4 REQUIRED)
21	888-4203-50000PB	SWIVEL 90°, 1/8" MNPT X 1/8"F
22	888-4203-50202PB	SWIVEL 90°, 1/4" MNPT x 1/4"F
23	888-2225-35800PB	VALVE, COMBINATION II, BOLT, BASE (4 REQUIRED)
24	888-2225-00170PB	VALVE, COMBINATION II, WASHER (4 REQUIRED)
25	888-2225-00160PB	VALVE, COMBINATION II, SPRING WASHER (4 REQUIRED)



2717 Tobey • Indianapolis, IN 46219  
 (317) 545-0665 • FAX (317) 545-0670 • (800) 800-0665  
[www.idsblast.com](http://www.idsblast.com)