



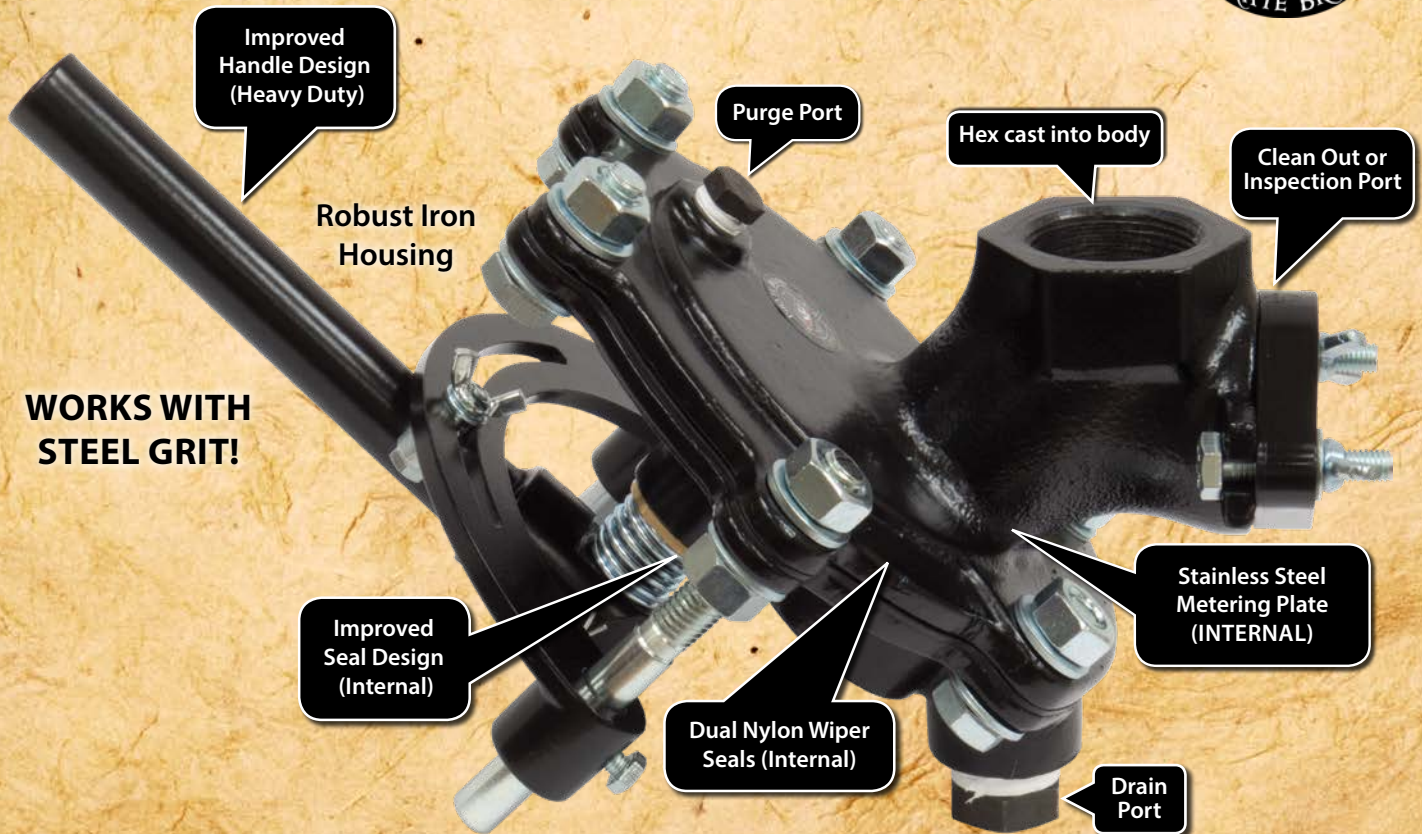
AMV II™

ABRASIVE METERING VALVE II



THE AMV II™ METERING VALVE IS HERE!

The AMV II has plenty of new features that make it the most advanced & reliable flat style metering valve available.

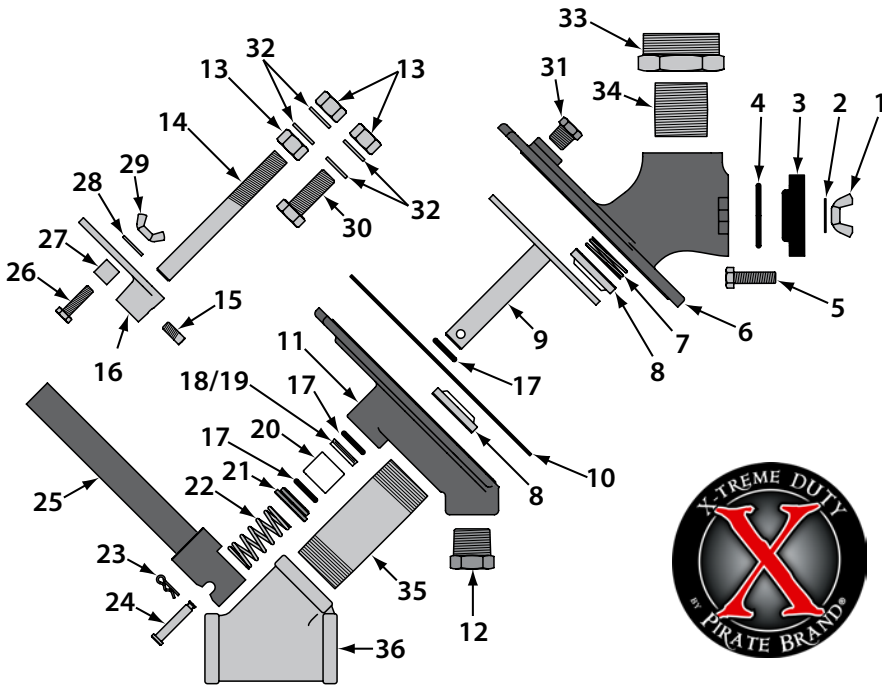


NEW Dual Nylon Wiper Seals prevent media intrusion & are perfect for steel grit!

FEATURES & BENEFITS:

- Nylon Wiper seals on BOTH sides of Metering Plate (Prevents abrasive from entering housing & causing jams).
- Large Clean-Out/Inspection Port & Drain Port are provided for greatly improved servicing & maintenance.
- Purge Port allows a compressed air supply to be connected to assist in flushing out any blockages through the Drain Port.
- Improved sealing of the Metering Plate Stem using a combination of lip seals & O-Rings.

PARTS & REPAIR KITS



AMV II (Abrasive Metering Valve II)

1	102-4410	AMVII, WING NUT
2	102-4420	AMVII, FLAT WASHER
3	102-4430	AMVII, INSPECTION PLATE
4	102-4440	AMVII, O RING (INSPECTION PLATE)
5	102-4450	AMVII, HEX HEAD BOLT
6	102-4460	AMVII, VALVE UPPER BODY, NPT
7	102-4470	AMVII, SEAL SPRING
8	102-4480	AMVII, METERING PLATE WIPER SEAL
9	102-4490	AMVII, METERING PLATE
10	102-4500	AMVII, RUBBER GASKET
11	102-4510	AMVII, VALVE LOWER BODY, NPT
12	102-4520	AMVII, HEX PLUG
13	102-4530	AMVII, NUT
14	102-4550	AMVII, STUD
15	102-4560	AMVII, MACHINE HEAD SCREW
16	102-4570	AMVII, GAUGE UNIT
17	102-4580	AMVII, O RING
18	102-4590	AMVII, O RING (SHAFT U-SEAL)
19	102-4600	AMVII, SHAFT U-SEAL
20	102-4610	AMVII, PACKING GLAND
21	102-4620	AMVII, BUSH
22	102-4630	AMVII, SPRING
23	102-4640	AMVII, R-SPLIT PIN
24	102-4650	AMVII, HANDLE PIN
25	102-4660	AMVII, HANDLE
26	102-4670	AMVII, HEX HEAD MACHINE SCREW
27	102-4680	AMVII, GAUGE UNIT SPACER
28	102-4690	AMVII, FLAT WASHER
29	102-4700	AMVII, WING NUT
30	102-4710	AMVII, HEX HEAD BOLT
31	102-4720	AMVII, HEX PLUG
32	102-4730	AMVII, FLAT WASHER
33	888-3026-10807PB	BUSHING, GALV, 1½" x 1¼"
34	888-3028-10799PB	NIPPLE, TBE, SCHEDULE 80, GALV, 1¼" x CLOSE
35	888-3028-10714PB	NIPPLE, TBE, SCHEDULE 80, GALV, 1¼" x 4"
36	888-3012-107PB	WYE, GALV, 1¼"

AMVII - Complete Valve



PN: 102-4350
AMVII, COMPLETE VALVE,
X-TREME DUTY, 1¼"
(DB1000)

Service Kit



PN: 102-4800
AMVII, SERVICE KIT,
INCLUDES #9, 10, (3)17, 18, 19, 20, 21 & 22

Wiper Seal Kit



PN: 102-4810
AMVII, WIPER SEAL KIT,
INCLUDES #7 & (2)8



2717 Tobey • Indianapolis, IN 46219
(317) 545-0665 • FAX (317) 545-0670 • (800) 800-0665
www.idsblast.com