

The ultimate in quality and design



**Recyclable**  
Stainless steel poles and bases.  
Designed for easy 'end of life' recycling.

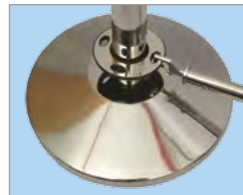
- Unique patented design
- Highest quality 3-series **stainless steel** throughout – excellent outdoor performance and high chip/scratch resistance
- Quick and easy to assemble – simple pictorial instructions and Allen keys provided
- Fully compliant with Local Authority and Disability Discrimination Act (DDA) requirements
- Range of banner size and material options available
- Flat packed with sectional **cross rails** for ease of distribution and storage



Use individually or  link together



Cross rails with 'clip-in' attachment – intuitive quick-release operation



Rigid lower cross rails ensure audible 'tap' and resistance for the visually impaired (fully DDA compliant)



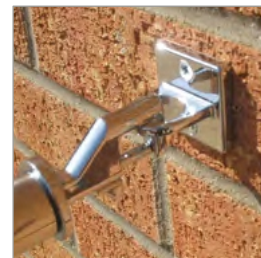
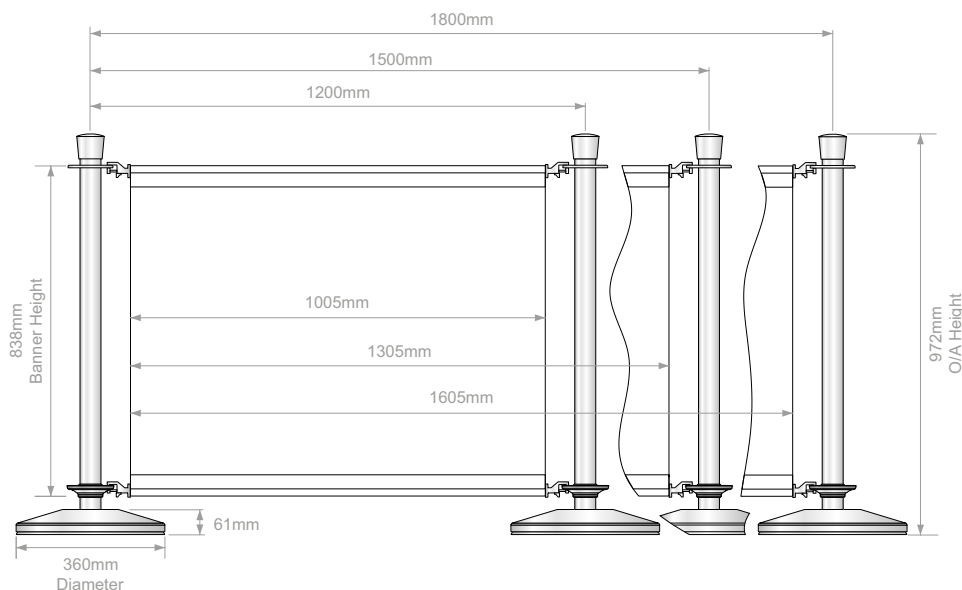
14.4kg stanchions with 360mm diameter bases for optimum stability.

Durable rubber base edges prevent damage to base/floor and give option to 'roll' rather than lift.



Unique 'smooth glide' sliding ring:

- Improves stability by allowing banner to flex in the wind
- Aids banner/cross rail installation and removal
- Keeps banner flat
- Eliminates rattling and pole damage associated with metal variants



Chrome plated 'Eye Plate' available for wall mounting

Item	Dimensions (mm)	Weight (kg)
Pole	O/A height: 972 Diameter: 51	0.9
Sliding ring	110 (dia.) × 30 (h)	0.3
Base	Height: 61 Diameter: 360	13.5
Cross Rail (2 per banner required)	Length: 1200*	0.8
	Length: 1500*	1.3
	Length: 1800*	1.4
Banner	1005 × 838	-
	1305 × 838	
	1605 × 838	
Eye Plate (for wall mounting)	40 × 40 × 35 (w × h × d)	0.06

\*Refers to distance between centres of poles



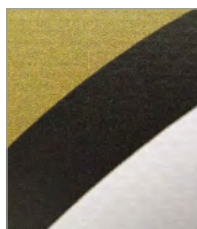
Quick and easy to use – simply slide cross rail into banner hem and roll-up for storage



## Printed banners available in a choice of materials:

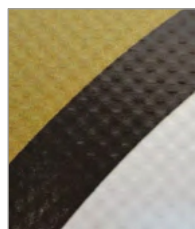
### Light Block PVC 750gsm

Reinforced and totally opaque, this is perfect for double-sided print, long outdoor life and vibrant colour reproduction. The easy 'wipe clean' surface makes it ideal for front-of-house food and drink environments.



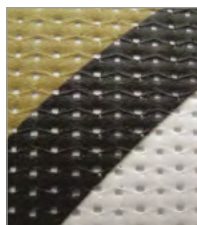
### Front-Lit PVC 360gsm

This material has woven reinforcement, resulting in a slight surface texture. It provides a high quality print surface on one side with the option of white or single colour on the reverse, with vivid colour reproduction across the full spectrum.



### Mesh PVC 380gsm

Provides a semi-transparent finish and allows some air to pass through, making it ideal for windy locations, 'subtle branding' and creating a 'style-bar' look. Full colour print is available on one side (white on the reverse).



### Polyester Canvas 500gsm

This close-weave 100% polyester fabric has all the appearance, weight and feel of a traditional canvas yet, unlike cotton-based canvases, it is cost effective and will not rot or stain. Available full colour printed to one side with the option of white or single colour on the reverse.



All our banners are suitable for outdoor use