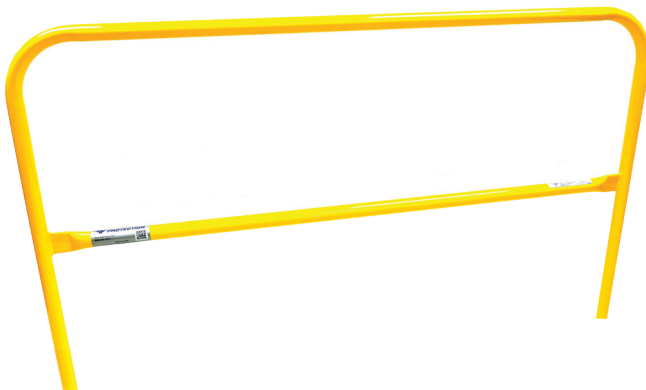




LORGUARD® Safety Railing

LORGUARD® is an innovative rooftop fall protection solution that complies with OSHA requirements 1910.29 and 1926.502 for guardrail systems. Compatible with all commercial roofing materials, LORGUARD® is available in a standard safety yellow, galvanized steel or custom powder-coated finish. Standard sections are 6, 8 and 10 feet long, and custom lengths and colors are available upon request.



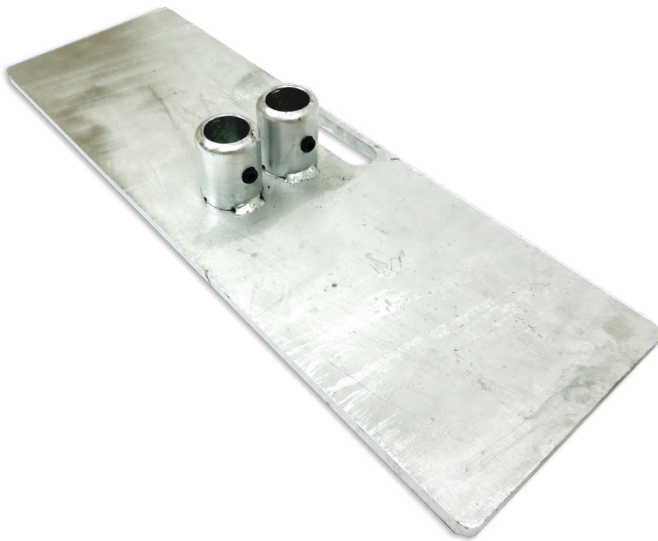
- 150 MPH wind load rating
- Lightweight design
- Non-penetrating base
- Easy installation
- Custom configuration
- OSHA compliant
- Made in the U.S.

LORGUARD® Base Plates

Protect your people and rooftop with a non-penetrating guardrail system
Designed for easy and quick installation, LORGUARD® rail sections do not require attachment to any structure or rooftop penetration. Simply slip the railing section into the innovative, ergonomic base plate and tighten one set screw for reliable rooftop safety.

Base Plate Features:

- Lightweight, 59-lb. base plate minimizes roof load
- Hot dipped galvanized steel plate with non-skid pads
- Carrying handle and radius corners for easier installation
- Set screw design secures railing and eliminates wobble
- Engineered design prevents system overturn



LORGUARD® Accessories and Kits

- **Base plates**
Lightweight, 59-lb. base plates install easily for quicker setup and teardown
- **Safety swing gate**
Adjustable, self-closing gate measures 23 inches tall by 23 to 38 inches wide
- **Toe boards**
Create a barrier around the guardrail base to prevent tools from falling off the edge
- **Rubber pads**
Optional rubber pads add an extra layer of protection between the base plate and roof surface
- **Kits**
Roof hatch, HVAC and contractor kits are available upon request

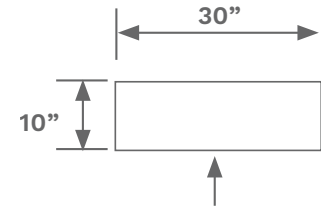
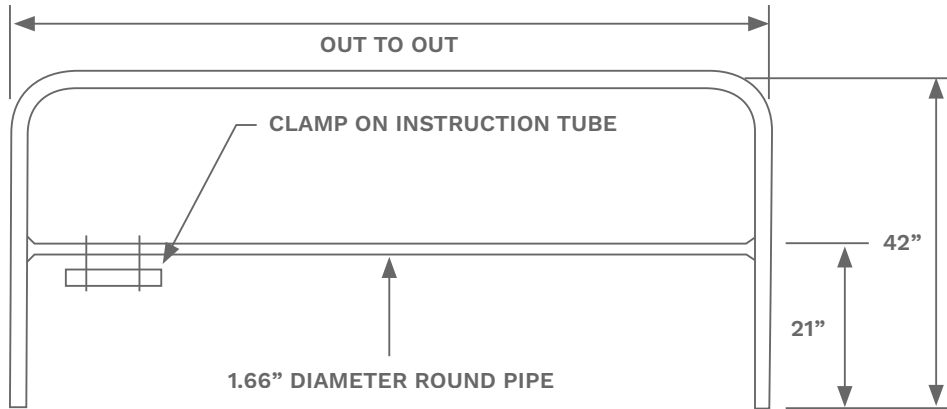
Where to Install

- Unprotected roof edges
- Ramps, runways or walkways
- Roof hatches
- Construction sites
- Sky lights
- HVAC systems
- Floor openings
- Ladders
- Wells, pits, shafts or manholes

Compatible roofing materials

- Membrane
- Standing seam
- Gravel
- Tar
- EPDM

Your LORGUARD® System



LIGHTWEIGHT 59 LB BASE PLATE

STRUCTURAL STEEL PIPE

- Strong and rigid
- Precision bent for consistent quality
- Smooth corner radii

LIGHTWEIGHT

- 6'-0" Guard rail: 34 lbs
- 8'-0" Guard rail: 41 lbs
- 10'-0" Guard rail: 48 lbs

POLYESTER POWDER COAT FINISH

- Durable
- Attractive fade resistant
- Scratch resistant
- Color options ("Safety Yellow" - Standard)

DURABLE FINISH ON BASE

- Protective and durable
- Attractive fade resistant

NON-SKID BASE

- Marine quality
- Meets military and motor vehicle safety standard specs

Part #	Description
7900010-Y	6' Lorguard Safety Yellow Rail Section
7900011-Y	8' Lorguard Safety Yellow Rail Section
7900012-Y	10' Lorguard Safety Yellow Rail Section
7900010-G	6' Lorguard Galvanized Guard Rail Section
7900011-G	8' Lorguard Galvanized Guard Rail Section
7900012-G	10' Lorguard Galvanized Guard Rail Section
RP3212	Rubber Studded Base Plate Pad
7900004-AG	Galvanized Base Plate
GEN2SG-Y	23" to 38" Adjustable Safety Swing Gate

Part #	Description
7900005	Rail Splice Kit
TB-6	6' Toe Board
TB-8	8' Toe Board
TB-10	10' Toe Board
7100001-SY	6' Lorgate Loading Dock Safety Gate
7100002-SY	8' Lorgate Loading Dock Safety Gate
7100003-SY	10' Lorgate Loading Dock Safety Gate
7100004-SY	12' Lorgate Loading Dock Safety Gate