

HVAC DUCT SUPPORTS

Product Description

Duct supports are an ideal choice for lifting, stabilizing and supporting rooftop ductwork and tubing. Unistrut Service Company's heavy-duty roof duct supports protect against roof leaks and property damage while safeguarding your commercial HVAC systems. Made in the USA.



Product Requirements

Maximum clearance: 48"

Load limit is dependent on building code

Product Features

- Non-penetrating concrete base design minimizes the number of roof penetrations required to achieve the desired wind load rating.
- Each duct support comes with two rubber pads to create a protective barrier between concrete base plate and roof surface
- Standard Finish – 12 GA. Hot Dipped Galvanized channel conforming to ASTM A653 G90
- Custom sizes are also available upon request
- Stainless steel available upon request

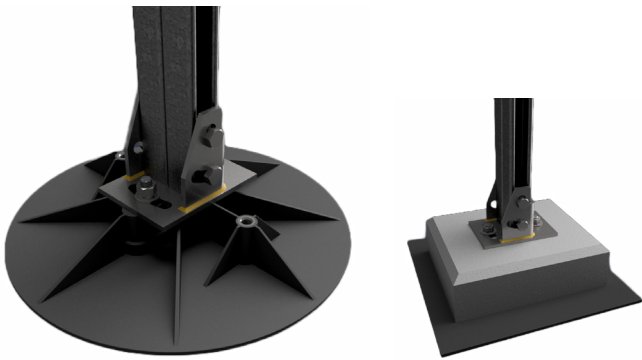


Gravity Connections:

Concrete Block- Ballasted/ Counterweighted



Polycarbonate or Concrete Base



Rigid Connections:

U-Anchor



Stanchion



Direct Connection Base

