

## COUPLER INSPECTION SYSTEM (CIS)



### SYSTEM SET UP ▶



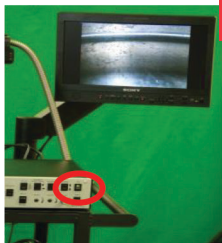
**A** Connect White and UV light guides to their respective light sources. **CAUTION:** Light guide ends fragile, handle with care.



**B** Connect power/control cable and camera cable to control unit. **CAUTION:** Camera connector fragile, orient key to 12 o'clock position and connect gently.



**C** Connect A/C Power Cord, S-video, BNC, Insertion, and Elevation cables to the back of the Control Unit.



**D** Power system ON. Set VIBES/WebViewer switch on control unit to WebViewer. Select the proper Video Input on the monitor to see a picture. (All cable connections on flip side of Quickstart)

### CHANGING OPTICAL TIPS ▶



**E** Select appropriate optical adapter: 60 degree DOV, 45 degree DOV, or 90 degree DOV tips.



**F** Unthread silver locking ring where the optical adapter attaches to the CIS pole. Gently pull tip straight back until tip comes off.



**G** Take selected optical adapter and line up pins and white marks.



**H** Gently push tip straight forward until it stops. Thread silver locking ring until new optical adapter is secure.

**CAUTION: AVOID EYE AND SKIN EXPOSURE TO UVA LIGHT**



303 STATE ROUTE 94 • COLUMBIA, NJ 07832 • WWW.INTERTEST.COM

OFFICE: 908-496-8008 • HOURS: M – F, 8am to 5pm EST • E-MAIL: SERVICE@INTERTEST.COM

# COUPLER INSPECTION SYSTEM (CIS)



## CHANGING COUPLER MOUNT ▶

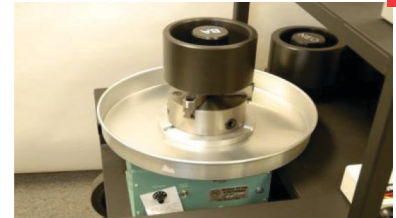


Mitsubishi Regional Jet      British Aerospace      Airbus New Engine Option

Select appropriate coupler mount: Mitsubishi Regional Jet, British Aerospace, or the Airbus New Engine Option.

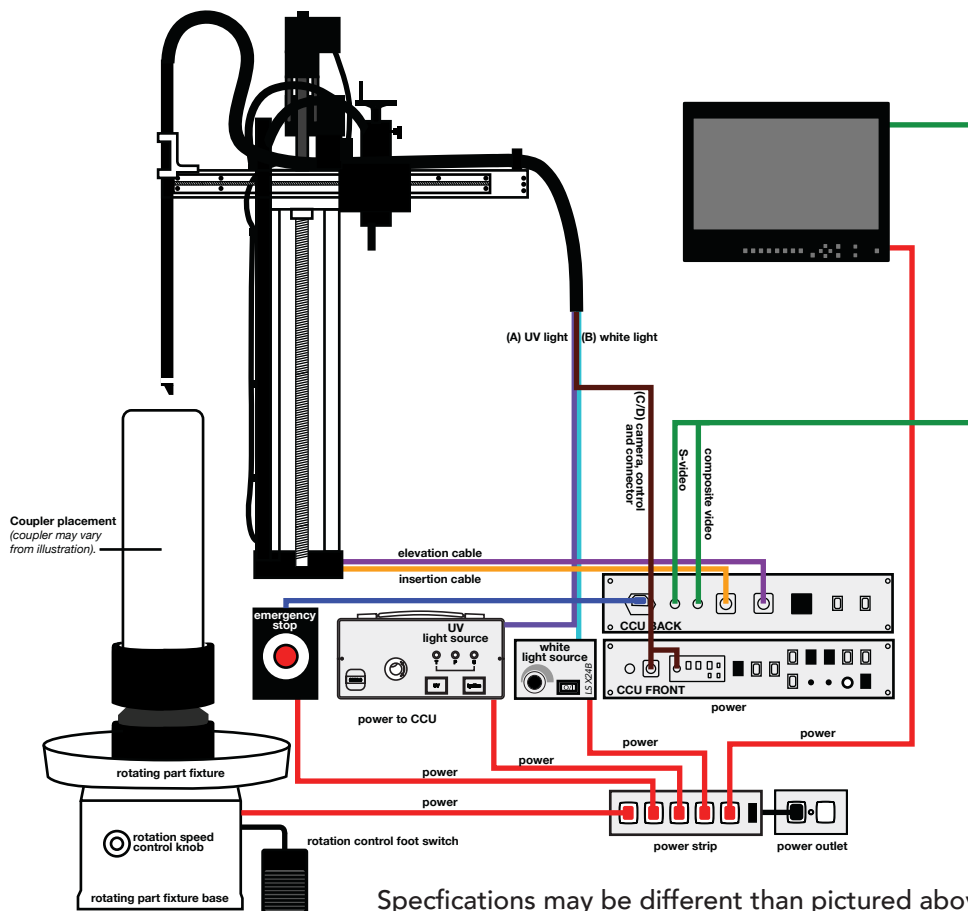


Using wrench provided, loosen chuck and place appropriate coupler mount in.



Finger-tighten chuck around the new coupler mount with wrench. Coupler sits vertically in mount.

## CIS SYSTEMS CONNECTIONS ▶



Specifications may be different than pictured above.



303 STATE ROUTE 94 • COLUMBIA, NJ 07832 • WWW.INTERTEST.COM

OFFICE: 908-496-8008 • HOURS: M – F, 8am to 5pm EST • E-MAIL: SERVICE@INTERTEST.COM