

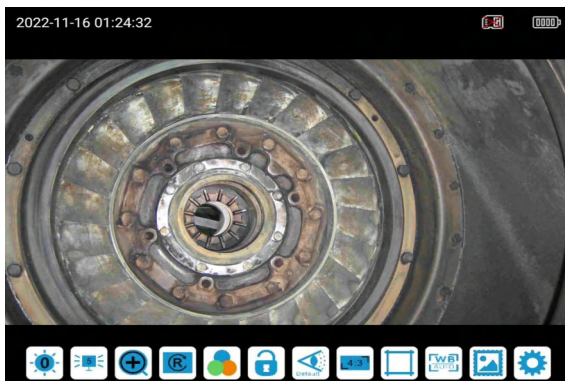
P + SERIES

Industrial Videoscope



Yateks **P+ Series** industrial videoscope is a new product that is fully upgraded based on the Yateks P Series. The upgraded P+ Series is compatible with the latest technology probes offering many more inspection options. In addition to direct and side-view dual megapixel probes, there are also 2 megapixel direct-view probes options. This HD image is for better reproduction of defect details. The addition of a USB Type-C interface and WiFi functionality makes the detection more efficient and faster. The new UI interface and user-friendly operation design makes for an easier operator and user experience.

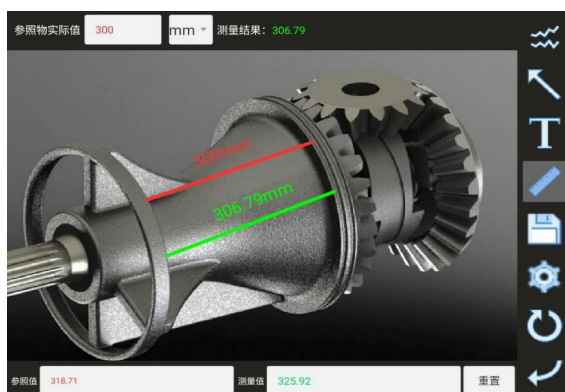
Technical Advantages :



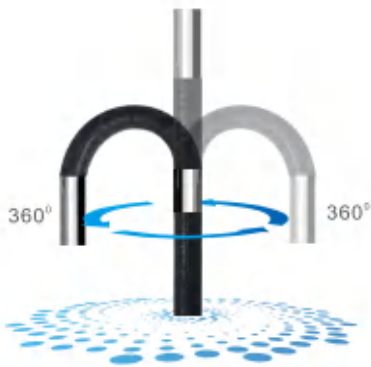
- Brand-new user-friendly software interface, sensitive touch buttons, Instant electric control joystick, Precise positioning, Easy and simple operation and, Image and video annotation function.



- Dual camera with 2 megapixel resolution (front) which provide more options for probes.



- Relative measurement function to find the detection area quickly and precisely.



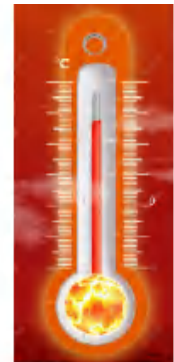
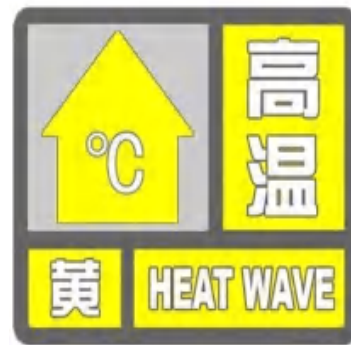
- ⊗ Electronic magnetic rocker joystick gives probe 360° directional control



- ⊗ Step-by-step probe setting system provides precise and repeatable probe articulation



- ⊗ Different probe working lengths and diameters offer inspection application flexibility



- ⊗ High temperature warning sensor : 70°C yellow, 80°C red warnings



- ⊗ USB Type-C interface & HDMI output.

- ⊗ Wireless, Multi-screen display for easy image/video sharing

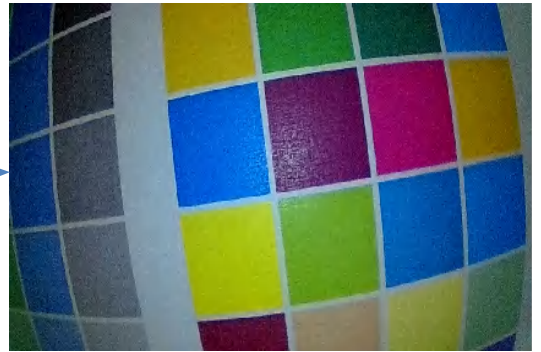
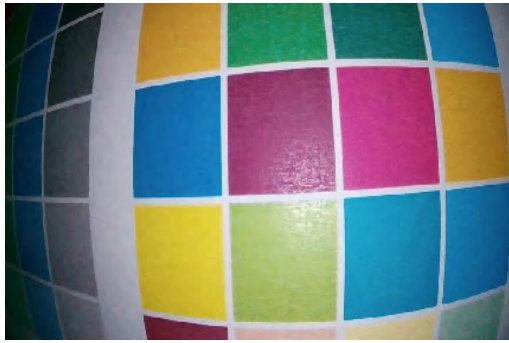
Technical Advantages:

⊗ Improved image clarity and reflection suppression

Before

After

Color board comparison



Welding stainless steel workpieces



Rusty casting workpiece

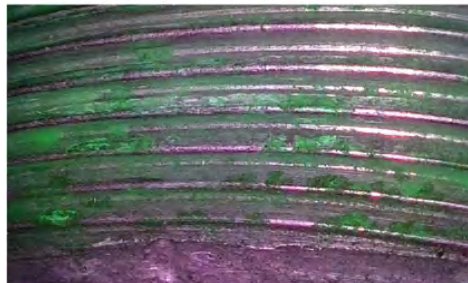


Automatically identify rusted parts or abnormalities

Regular



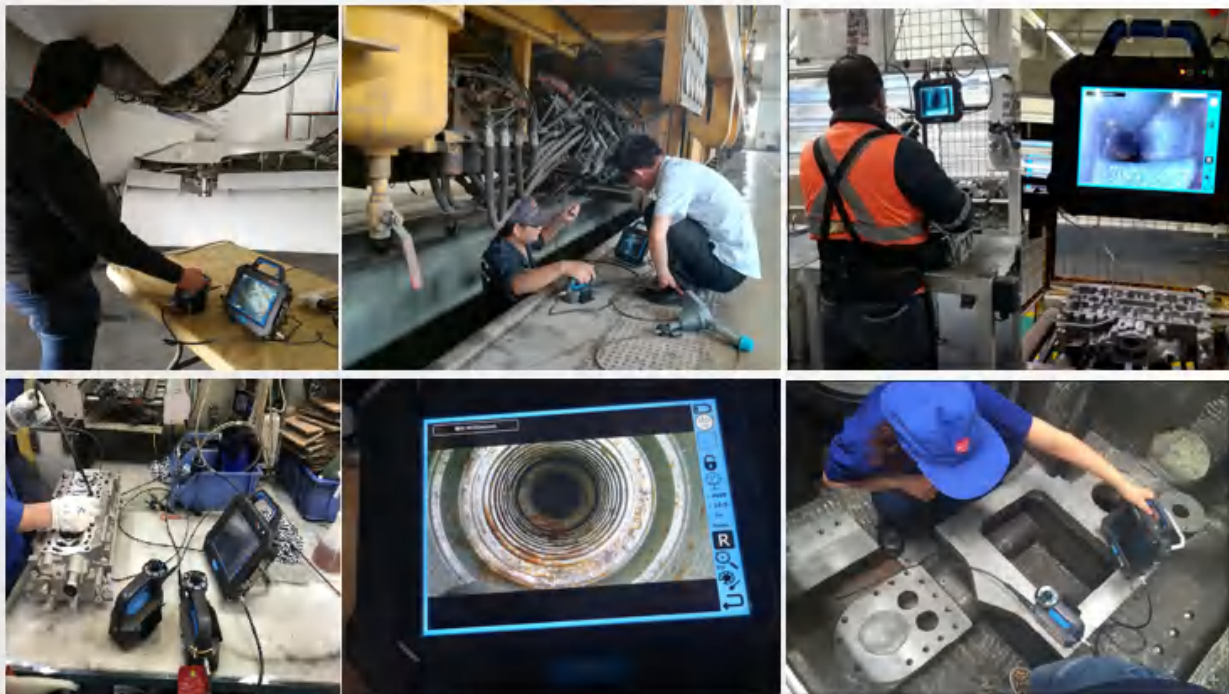
Enhanced



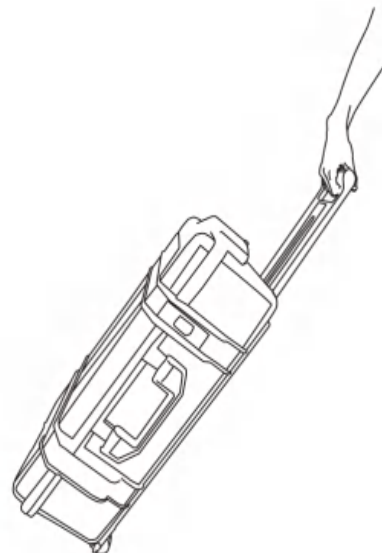
- ⊗ Reinforcing support piece added to prevent probe damage at the base of the hand-held unit



- ⊗ **Industries & Applications:** Aviation & Aerospace, Electrical Production and Construction, Railway, Ship, Construction Engineering, Automotive Manufacturing, Energy & Electricity, Automotive Maintenance



- ⊗ **Carrying Case:** Portable convenient trolley box packaging



	Category	Description
System	Dimension/Weight	246*321*123mm/2.3KG
	Display screen	8" IPS industrial HD touch LCD screen with resolution 1024*768(ratio 4:3)
	Control Lever	Electric rocker with lens able to rotate in 360-degree, automatic set, direction fine tuning adjustable
	Functions	Photography, video, brightness control, locking and fine-tuning
	Storage	32G high-speed SD card (UP TO 128G)
	I/O port	SD card port, HDMI port, Type C charging port
	Battery/Standby time	Four 18650 Lithium batteries(replaceable)
	Brightness control	10 degrees brightness adjustment
	Combining form	Monitor + probe +cable , detachable
	Compatibility	Support different diameter probes
	Software	Operation system
User interface		Touch screen operation menu
File management		Support image and video play, delete, format memo and naming
Image control		Zoom in/out,playback,picture freeze-frame,image reversal,mirror image
Image format/Video format		JPEG, JPG/AVI(record date and time)
Language		Chinese/English/Chinese/Korean/German/Russian/Japanese/panish/Portuguese
Measurement		Reference grid/ Reference measurement function
Color settings		4 modes for different applications
White balance		Automatic/manual white balance
Exposure mode		Automatic/manual/
Upgrade		by SD card service pack
Operating environment	Monitor working temperature	-10 ~ 50°
	video probe working temperature	-20 ~ 70°
	Waterproof	Probe IP67



White

IR

UV

Supports different options of insertion tube

Probe Diameter [mm]	Camera Location			Light Source			Illumination Way		Articulation	
	Front	Side	Dual	White LED	IR	UV	Fiber	LED	180°	360°
1.1	✓			✓						
1.7	✓			✓				✓	✓	
2.2	✓			✓		✓		✓	✓	
2.8	✓			✓				✓		✓
3.9	✓	✓	✓	✓		✓	✓	✓		✓
6	✓	✓	✓	✓	✓	✓	✓	✓		✓
8.4	✓			✓				✓		✓

InterTest, Inc.

