



MILLISCOPE HD

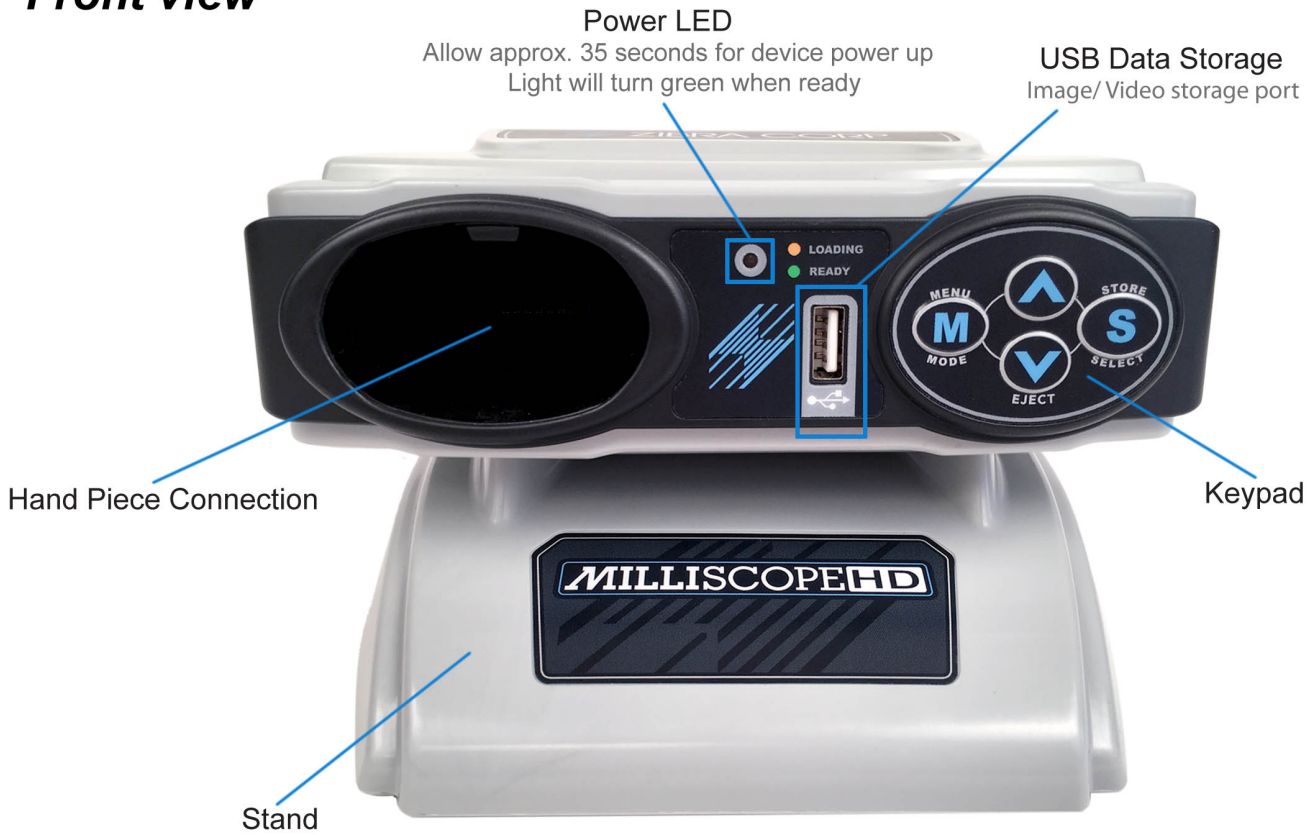
MILLISCOPE HDV

**MODULAR FIBERSCOPE / VIDEOSCOPE
SYSTEM USER MANUAL
V01.2**

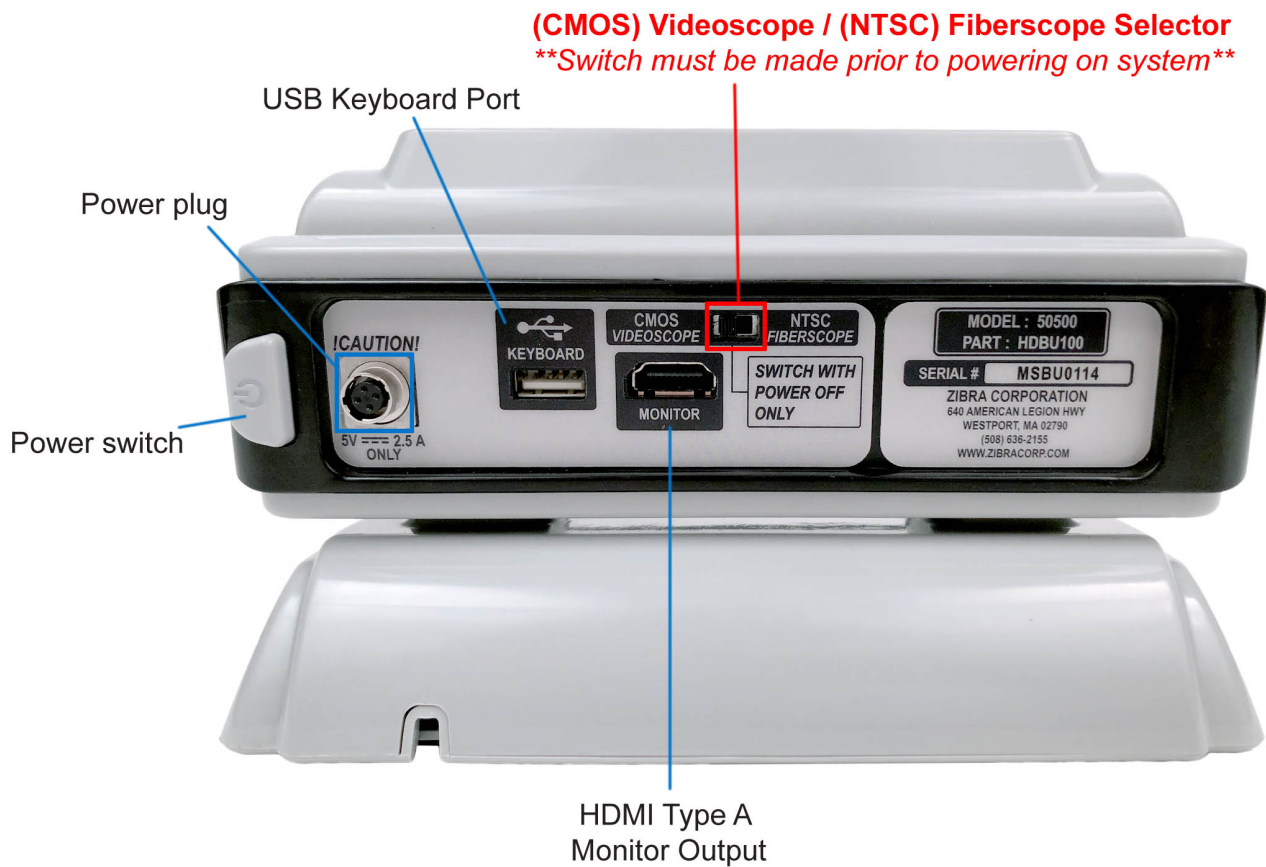


www.zibracorp.com 1-800-758-8773 sales@zibracorp.com

Front view

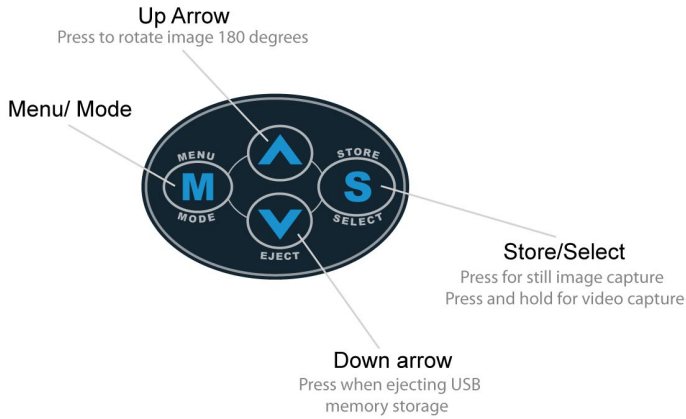


Rear view

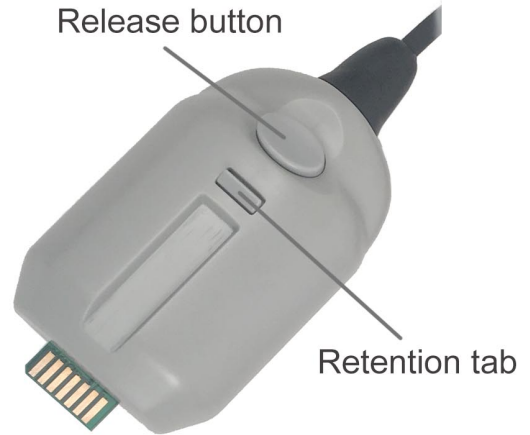


Milliscope HD Analog Handle

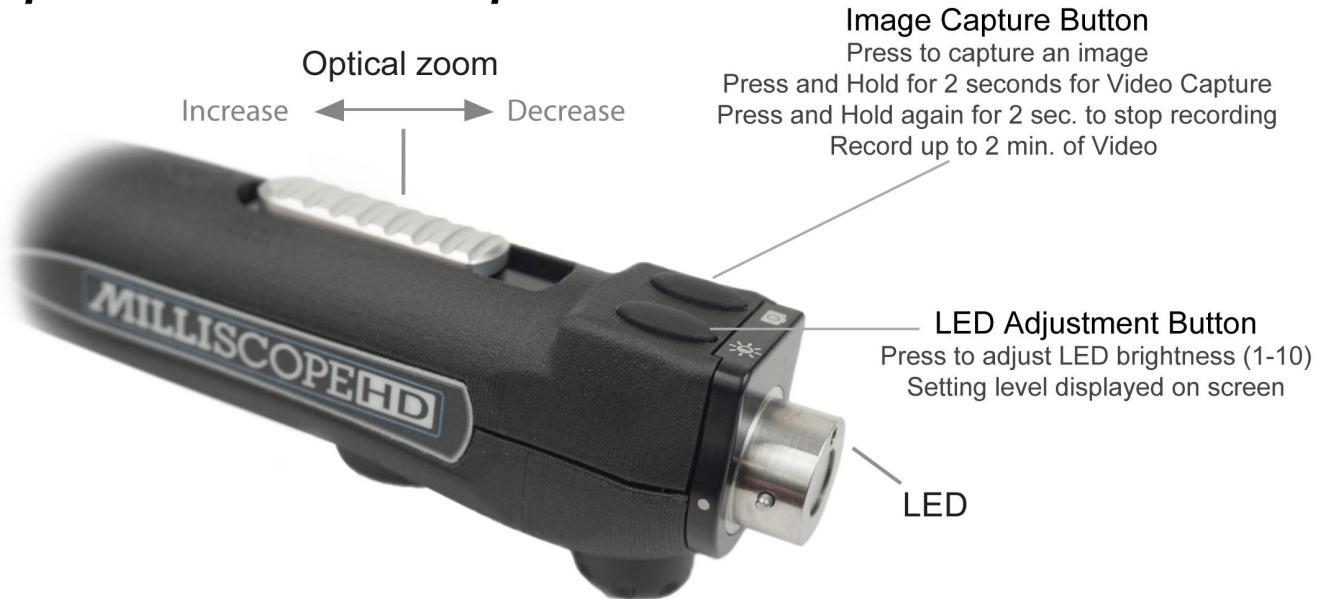
Keypad detail



Connector detail



Fiberscope camera handle: top detail



Fiberscope camera handle: bottom detail



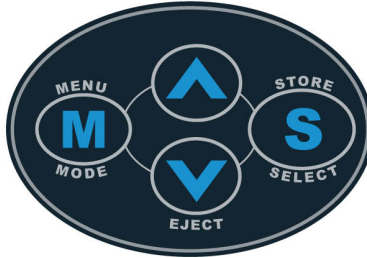
Milliscope HDV Video Handle

Base unit Keypad detail

Up Arrow

Disabled in Milliscope HDV (CMOS) mode

Mode/Menu



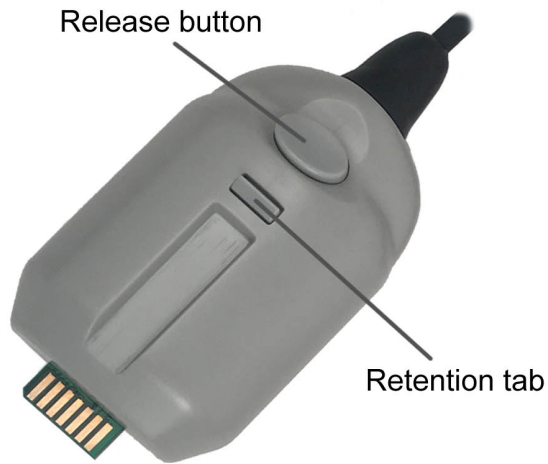
Store/Select

Press for still image capture
Press and hold for video capture

Down Arrow

Press when ejecting USB
memory storage

Connector detail



Top View



Bottom View

Milliscope HDV Video Handle Buttons

Power Indicator
Green when powered *on*

Rotate Button
Rotate image
90 deg. clockwise

Capture Button
Press to capture still image
Press and hold for video

LED Button
Adjust probe illumination
through 5 power settings



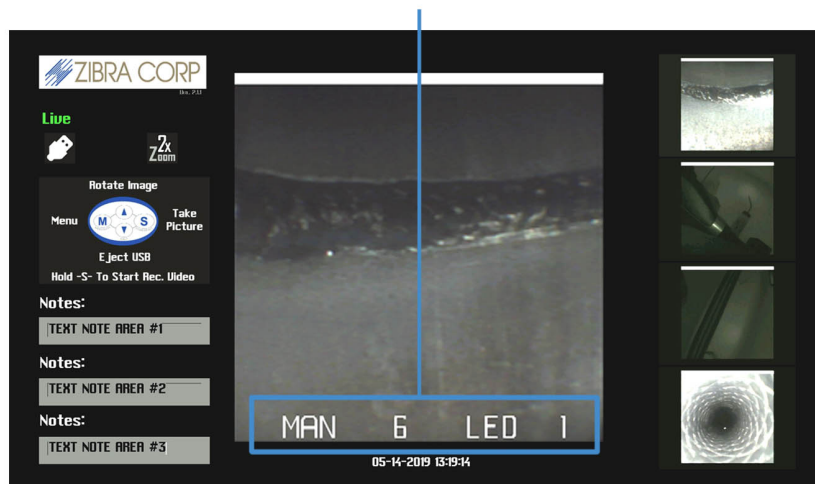
Mode Button
Two operating modes available
AUTO and MAN(manual)

Press and hold mode button
for (3) seconds to switch
between AUTO and MAN

Description of mode level
functionality outlined below

Manual Mode Detail

Press LED or Mode button once to view current level settings on screen
Press LED or Mode button again while level settings are displayed to change setting(s)



Once in Manual Exposure Mode press MODE button to adjust exposure setting.

Manual Mode has 10 settings with 1 being the dimmest and 10 the brightest.

When system is powered off/on MHDV handle will remain in whichever *mode* is currently selected.

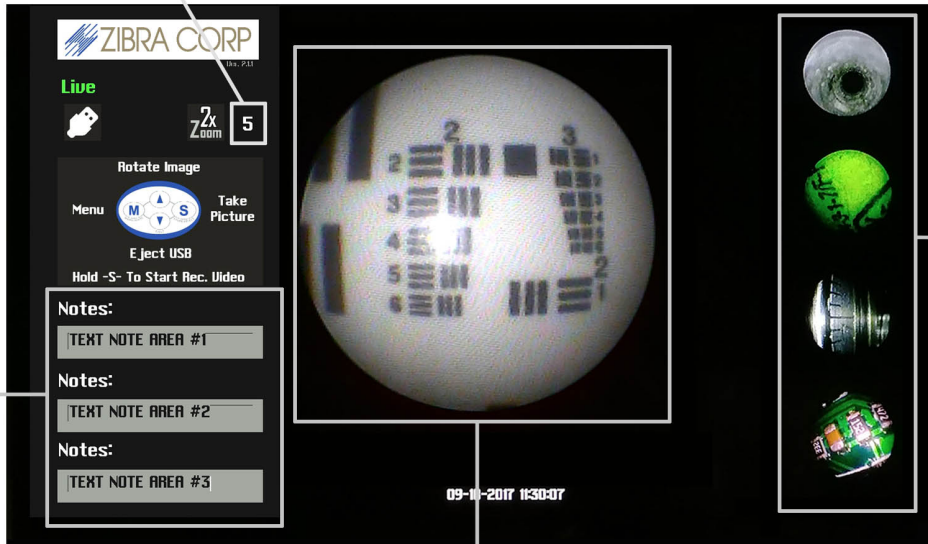
However, the Manual Mode level setting will default to level 1
when switching between AUTO and MAN modes.

Monitor Interface Layout

The Milliscope HD/HDV contains an integrated firmware system that allows you to use any High Definition compatible external monitor as your display. Since the software and display characteristics are built directly into the camera system, the information will display correctly with minimal setup required.

LED LEVEL NUMBER

MILLISCOPE HD (ANALOG)

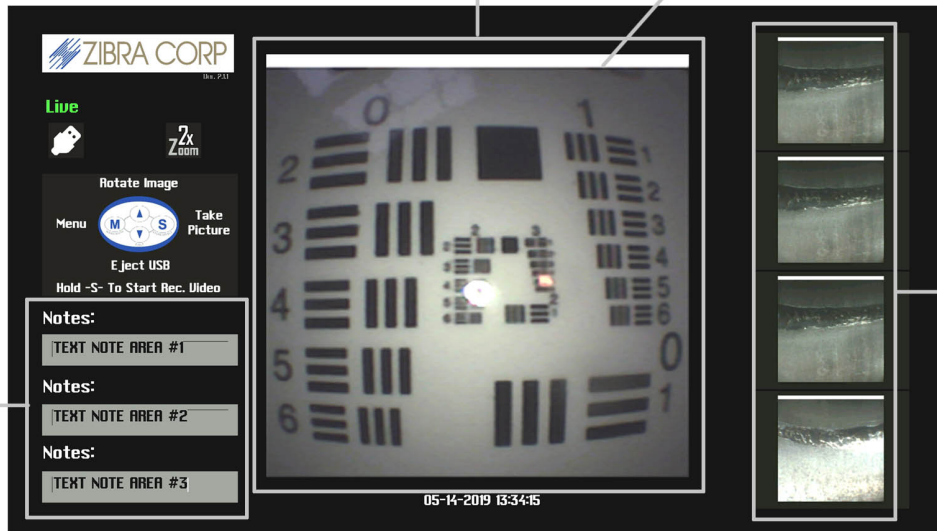


FIELD TEXT
(VIA USB KEYBOARD)

LIVE CAMERA VIEWS

SAVED
IMAGE
GALLERIES

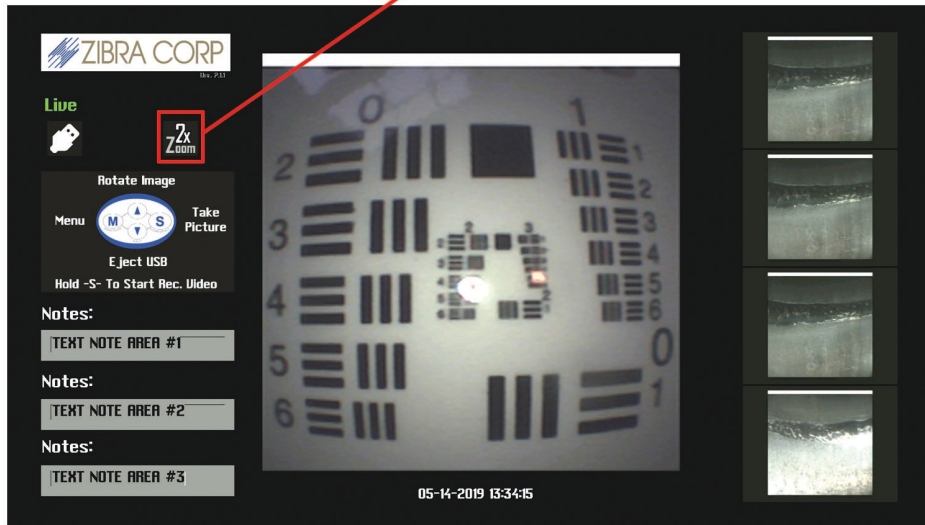
WHITE HORIZON LINE (HDV ONLY)



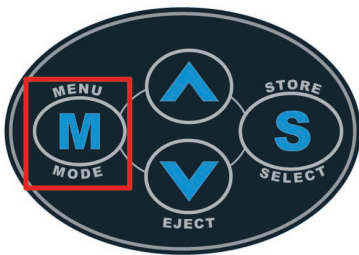
MILLISCOPE HDV (VIDEO)

Instructions for setting Milliscope HD/HDV system *Digital Zoom*

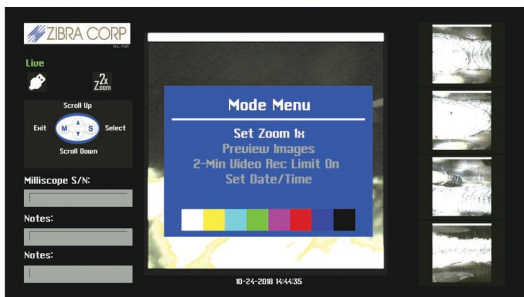
System set at 2X zoom(recommended for most applications)



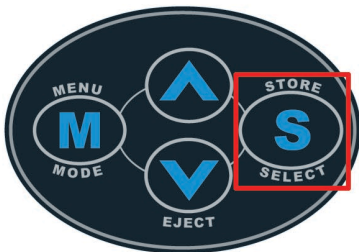
Step 1: Press *Menu* button on front of Milliscope HD base unit



Step 2: The Mode Menu will appear and Set Zoom will be highlighted in white



Step 3: Press *Select* button to choose desired magnification



General Operating and Maintenance Information

- Always place and keep *Milliscope HD* unit on a flat, level, and secure surface.
- In the event of suspected damage or failure, do not operate. Have the device inspected by qualified personnel.
- Do not operate this product if there are signs of tampering or any of the covers are removed.
- Do not allow spilling of liquids on the *Milliscope HD* unit.
- *Do not immerse any of the components in liquid.*
- Do not operate the device outside of the specified input voltage range.

CLEANING

- Use a lightly damp cloth to wipe down exterior of unit. Allow unit to dry before use.
- Use Isopropyl alcohol and a soft, clean wipe or cotton swab to clean optical surfaces.
- Contact with acids and strong solvents should be avoided as serious damage can result.

Warranty Statement

Zibra Corporation certifies that all our factory borescopes and accessories will be free of defects in materials and workmanship for one year from the date of first retail purchase.

Video, lighting and some accessory products are covered by and subjected to the terms of the manufacturer's warranty.

MILLISCOPE HD

MILLISCOPE HDV

Service & Support

Zibra Corporation
640 American Legion Hwy
Westport, MA 02790

Office: 1-800-758-8773
Email: sales@zibracorp.com
Web: www.zibracorp.com