

ION-R200

Powerful & Ultra Compact
Dual Monitor HD Video Decoder



IONODES

A - PACKAGE CONTENTS



B - HARDWARE

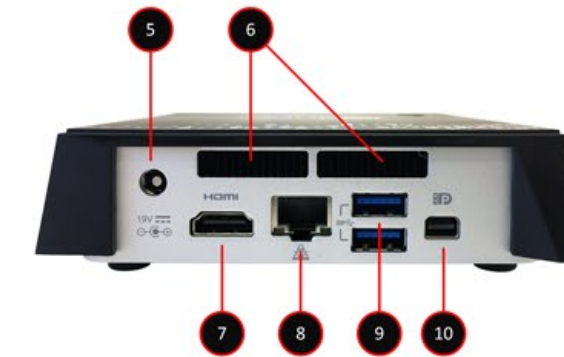
FRONT

- 1 - USB 3.0
- 2 - USB 3.0 (Chargin)
- 3 - Audio in/out
- 4 - Power LED



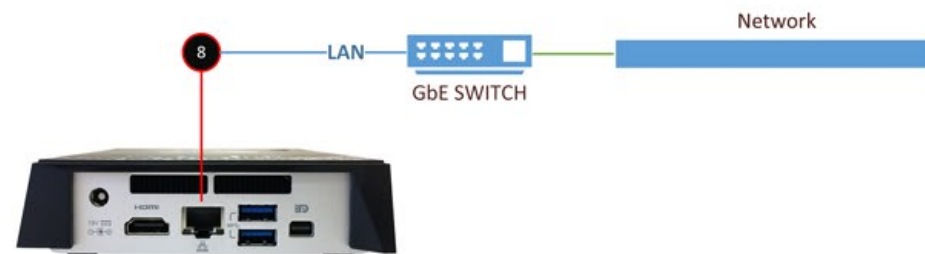
BACK

- 5 - Power Jack (DC-IN)
- 6 - Air Vents
- 7 - HDMI Display
- 8 - Gigabit LAN
- 9 - 2 x USB 3.0 Ports
- 10 - Mini DisplayPort



C - NETWORK

- Connect the **LAN** network port of the unit to the video network switch.



D - ACCESSORIES

For initial configuration or for maintenance purposes, you may require locally access the decoder's user interface.

- Connect a keyboard and mouse to the unit's **USB** ports
- Connect monitor(s) to the unit's **HDMI** and/or **MiniDP** port(s)



E - POWER UP

- Connect the provided power supply to the unit's **POWER JACK**
- The unit will automatically power on and boot-up as soon as the power supply is connected
- You **DO NOT** need to press the **POWER BUTTON** to boot the unit when in factory default configuration
- If a valid power supply is connected, the **POWER STATUS LED** will light up steady blue



F - MAIN SCREEN

- At first boot-up of the unit, the main user interface will appear
- Click "Switch to Configuration View" for initial device setup
- Follow the user manual for setup steps



G - USER INTERFACE

- The default credentials to log into the unit's user interface are:

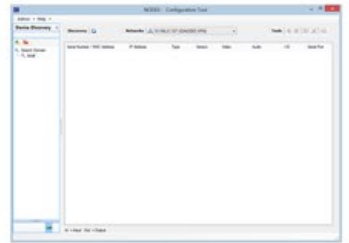
USERNAME: admin
PASSWORD: admin

- The default credentials to log into the unit's configuration web interface are the same as above

H - REMOTE ACCESS

- You can discover the unit on the network using the **IonConfigTool** application located on the provided **USB UTILITY KEY**; you may also download the IonConfigTool from our website at www.ionodes.com

- You can access the unit's configuration web interface by right-clicking on the unit found in the IonConfigTool and selecting the **Configuration Web Page** option



I - POWERING OFF

- You may initiate a power down of the unit by pushing and releasing the **POWER BUTTON**
- The unit may take a few minutes to complete its shutdown
- You can disconnect power from the unit while it is still running as the device is protected from data loss or corruption

J - FACTORY RESET

In the event your system has become corrupted or unusable in any way, or you simply wish to reload your system to its factory default operating system image, the appliance offers a safe mode mechanism. This mechanism will prevent your unit from decoding any video and therefore return it to a temporary stable state.

1. Reboot the unit
2. During boot up, simultaneously press on the LEFT SHIFT and RIGHT SHIFT keyboard keys
3. When the device detects the key combination, it acknowledges the switch to safe mode operation
4. Go to the device's configuration and apply required changes
5. You may also initiate a reload to factory settings from the administrative page under the maintenance section
6. Once new settings are applied, reboot the device
7. The device will now boot under regular mode

