

ION-R200

decoding

Dual Monitor HD Video Decoder

The ION-R200 is a dedicated ultra compact video wall appliance designed specifically for use with most H.264 video sources such as IP cameras and encoders. The ION-R200 is capable of decoding video streams at resolutions up to 4K for display on two HD monitors. The device also supports multiple layouts and views allowing you to create your dual monitor wall the way you want it.



Features

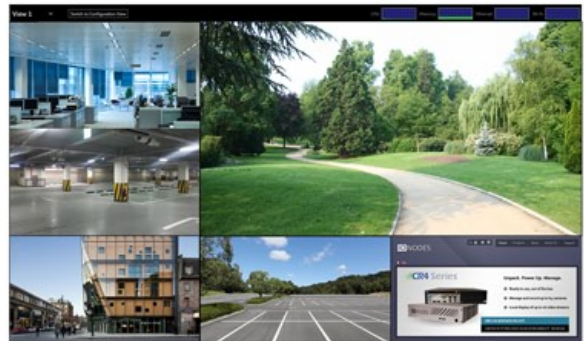
- Ultra compact design / VESA mount
- Dual monitor (HDMI + Mini DisplayPort)
- Low power consumption
- Supports up to 32 IP cameras / encoder sources
- Onvif camera discovery & RTSP source support
- High performance hardware video decoding
- Smart interface with performance monitoring
- Layouts from 1 x 1 to 4 x 4, per monitor
- Supports up to 5 user configurable views
- Supports web tiles for embedding external content

Built to last

The ION-R200 is designed using the highest quality components and a software environment built from the ground up to offer a simple, yet robust user experience. The system's "read-only" SSD boot drive and custom operating ensure consistent and reliable operation even after power outages.

Hardware accelerated performance

The ION-R200 video wall software platform makes use of the latest Quick Sync hardware-based video decoding acceleration engines found on Intel® CPU's.



H.264 / 4MP@20 FPS (16 Mbps)

Single out: up to 10 streams
Dual out: up to 10 streams

H.264 / 1080p@30 FPS (8 Mbps)

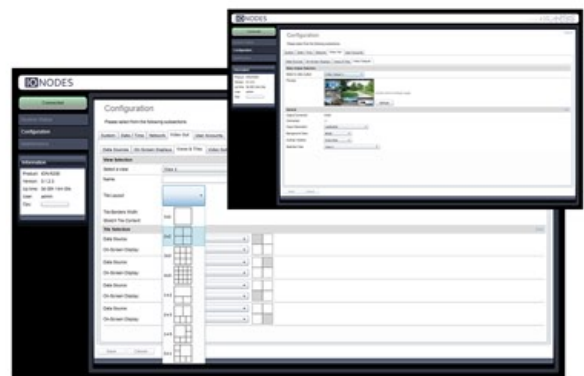
Single out: up to 16 streams
Dual out: up to 12 streams

H.264 / 720p@30 FPS (8 Mbps)

Single out: up to 18 streams
Dual out: up to 14 streams

H.264 / D1/4CIF@30 FPS (3 Mbps)

Single out: up to 32 streams
Dual out: up to 24 streams



ION-R200 Specifications

decoding

Dual Monitor HD Video Decoder

System

Network	1 x 10/100/1000 Base-T Ethernet port(s) RJ45 1 x 802.11ac WiFi
USB	4 x USB 3.0 (Mouse, Keyboard)
Display Outputs	1 x Full Size HDMI 1.4b 1 x Mini DisplayPort 1.2 (mDP) <i>* Single screen: max. 4K resolution</i> <i>* Dual screen: max. 4K + 1080p</i>
Boot Drive	64GB Solid State Drive (SSD)

Protocols

Networking	IPv4, UDP, TCP, IGMP, ARP, DHCP, DNS, HTTP, HTTPS, BONJOUR, NTP
Security	Basic / Digest Authentication, SSL

Software

Auto-Discovery	Bonjour protocol support
Web Interface	Web GUI for remote config. / maintenance
Camera Interface	Onvif discovery or Generic RTSP
Video Codecs	H.264 / MPEG-4
Data Rates	4MP@20FPS: 160 Mbps max. 1080p@30FPS: 128 Mbps max. 720p@30FPS: 144 Mbps max. 4CIF@30FPS: 96 Mbps max.
Tile Layouts	1x1, 2x2, 3x3, 4x4, 1+2, 2+3, 1+5, 5+1
Views	Up to 5, user-configurable
Streams	Up to 32, max. 16 per video output
Web Tiles	Supported; max. 3 total
Visual Diagnostics	Memory, CPU, GPU, Ethernet, WiFi
On-Screen Display	Supported; max. 4 strings per OSD entry

Mechanical / Environmental

Dimensions	4.5" x 1.3" x 4.4" (W x H x D)
Power Supply	19V, 65W AC-DC power adapter (included) Multi-country AC adapter (included)
Operating Temp.	0°C to 40°C
Power Consumption	Approx. 15W
Compliance	CE, FCC, RoHS, IEC, UL, ETSI, CSA
Warranty	3 Years Standard
Accessories	VESA mounting kit (included)

