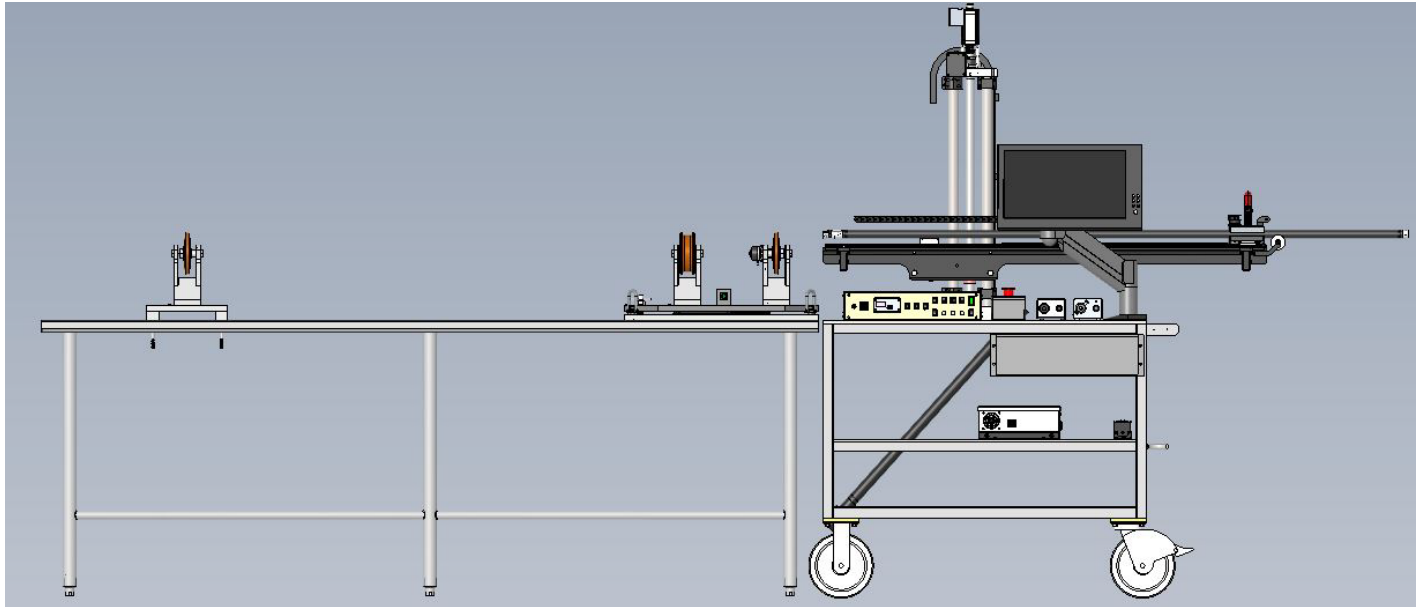




SeeUV®

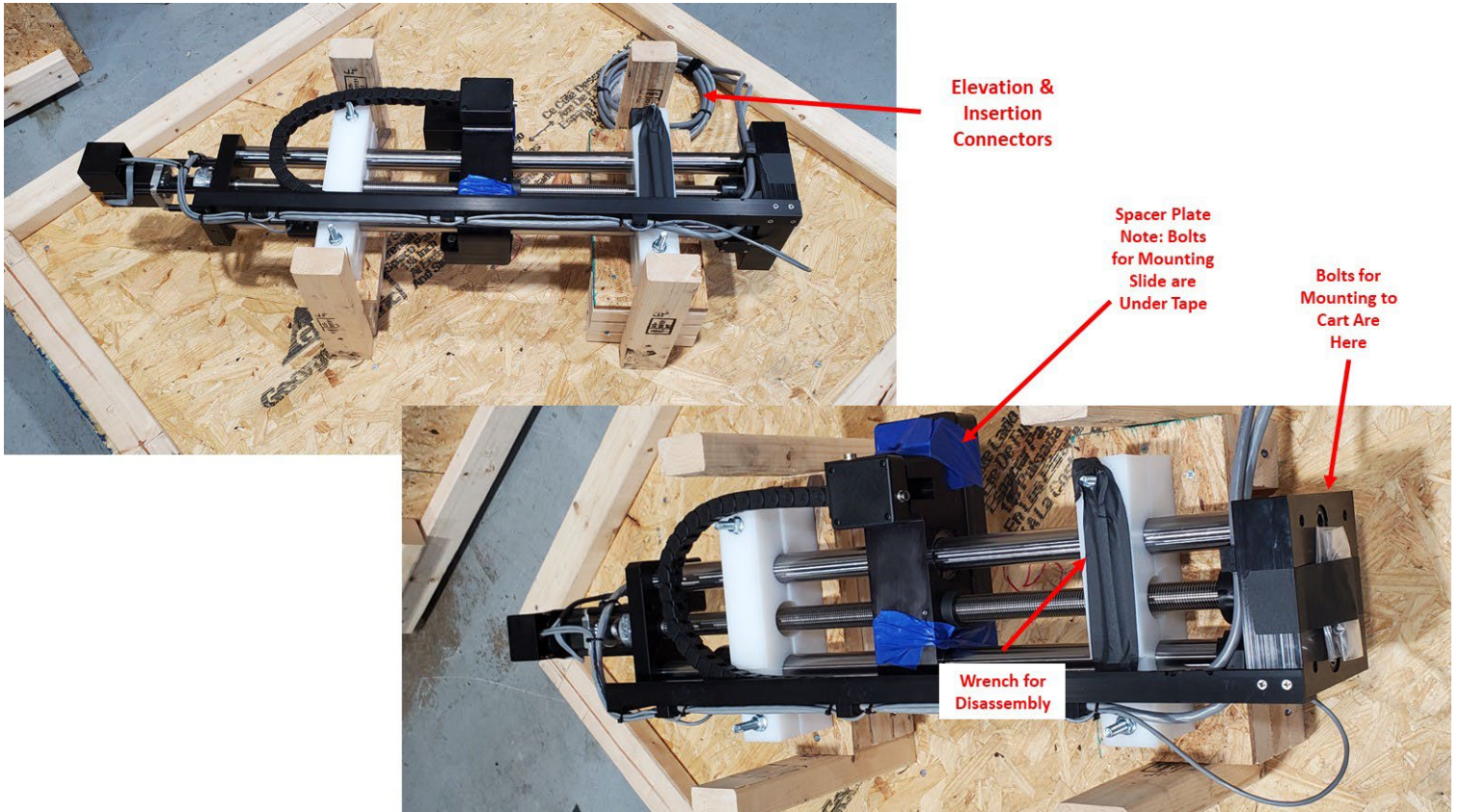


SeeUV® VIBES® Shaft & Coupler Inspection System (SCIS)

Assembly Instructions

EM18076 SeeUV® Pole Cam HD Sys. w/ Motorized H & V

1) Mast Assembly

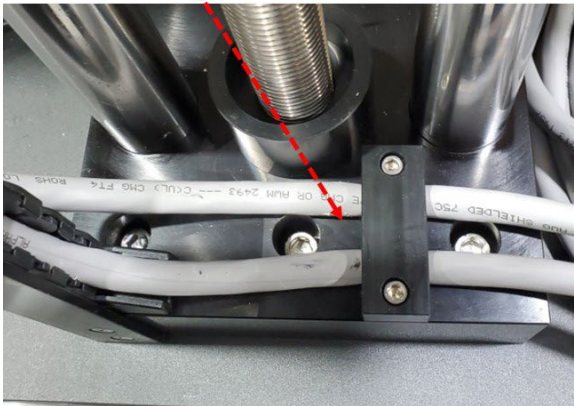


- 2) Once Mast Assy is mounted to cart using supplied socket head cap screws. Mount slide assy. Route encoder cable as shown.
Note: Be sure to "Square" the base prior to tightening.

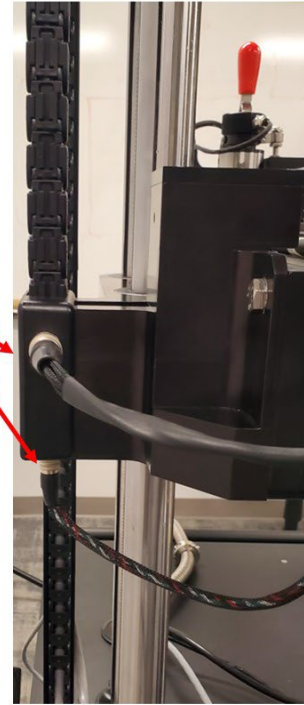
3) Attach encoder Cable.



Attach Mast
Assy to Cart

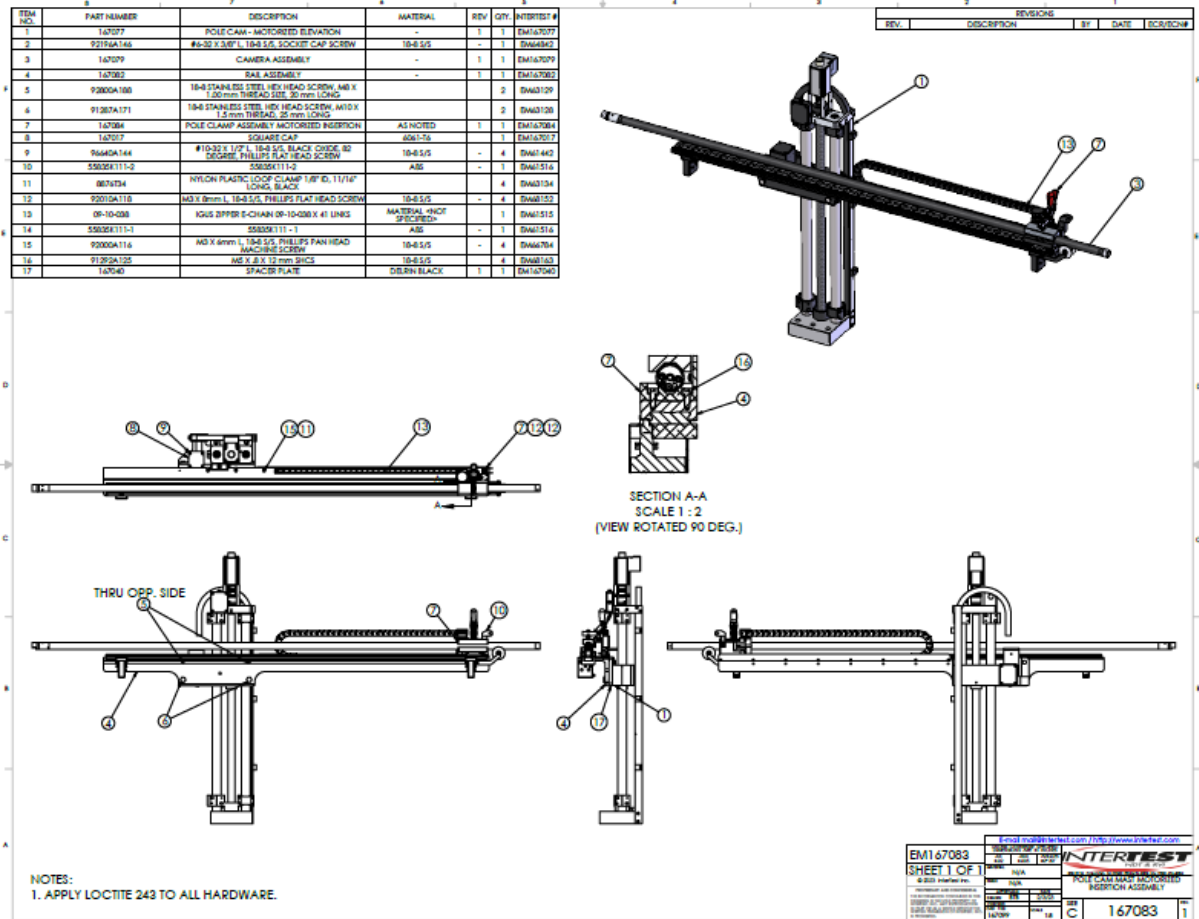


Plug In Cables
Note Wire Colors as
Shown & Each
Connector Has A
Different Number
of Pins



4) Mount the sliding arm. See DWG # 167083 Assembly Instruction.

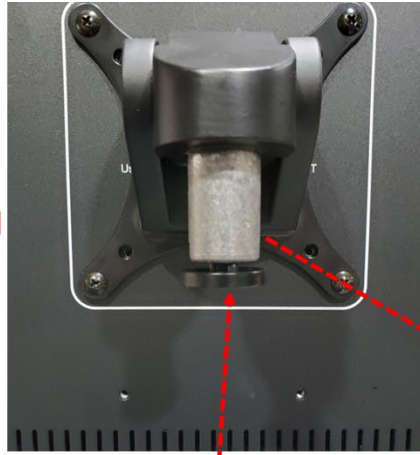
Note: Make sure the slide arm is level prior to tightening.



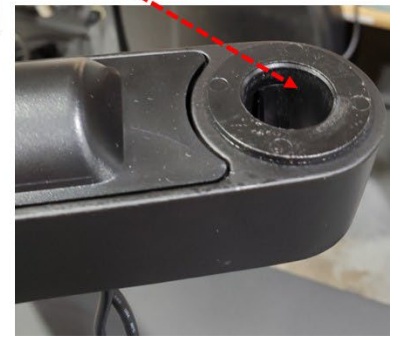
5) Install swing arm & Monitor. Set tension by tighten screw(s).



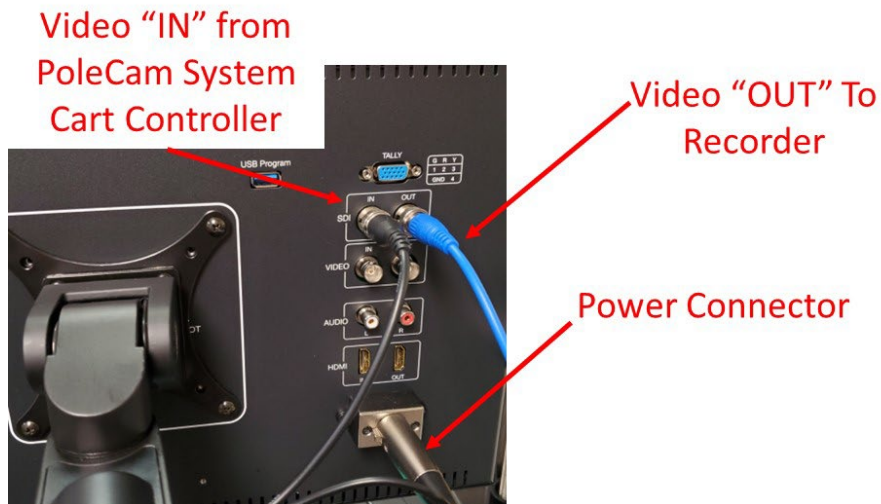
Install swing arm into stand on cart & tighten set screw



Use phillips screwdriver to remove this part then insert into hole & reinstall this part

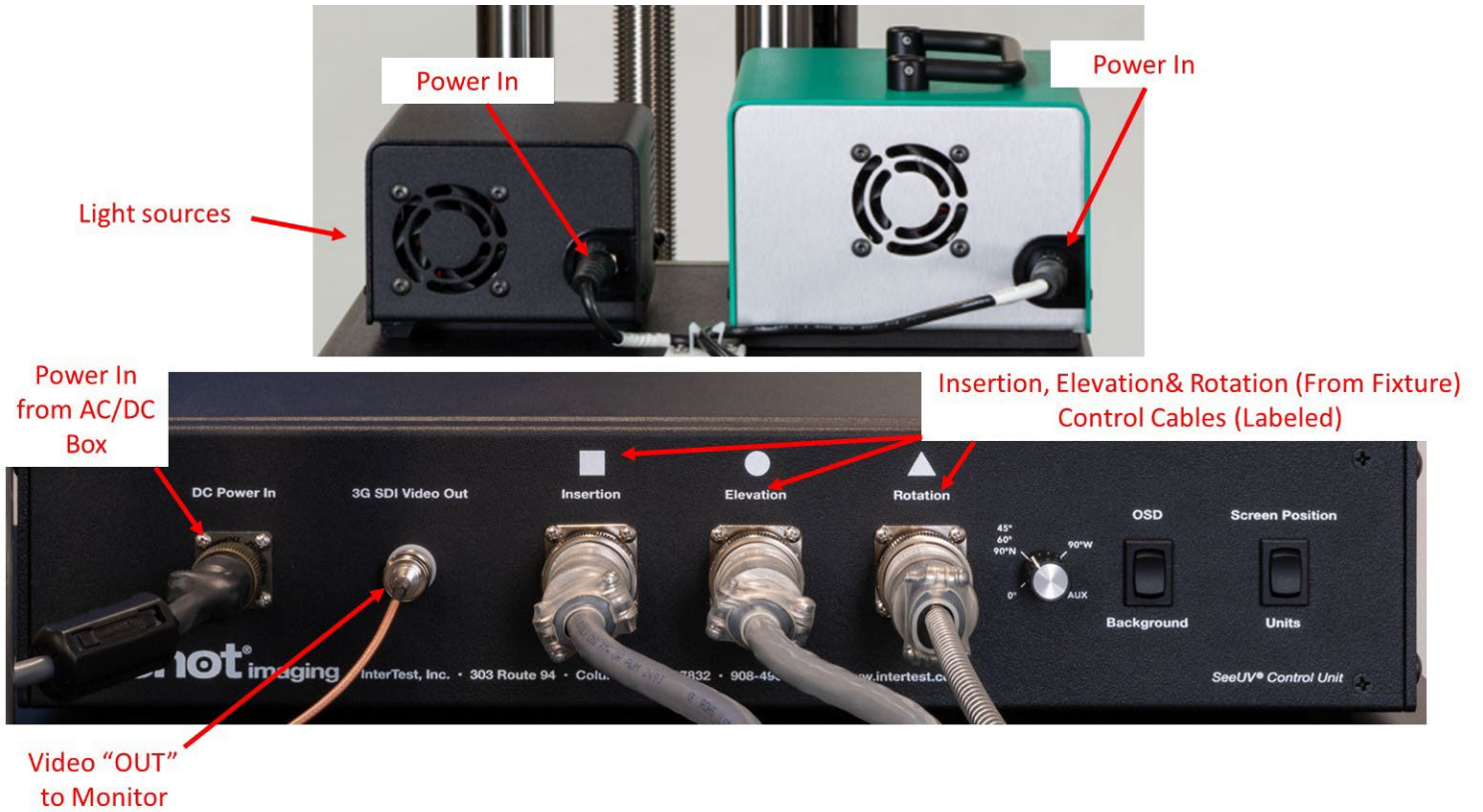


6) Attach monitor cables.



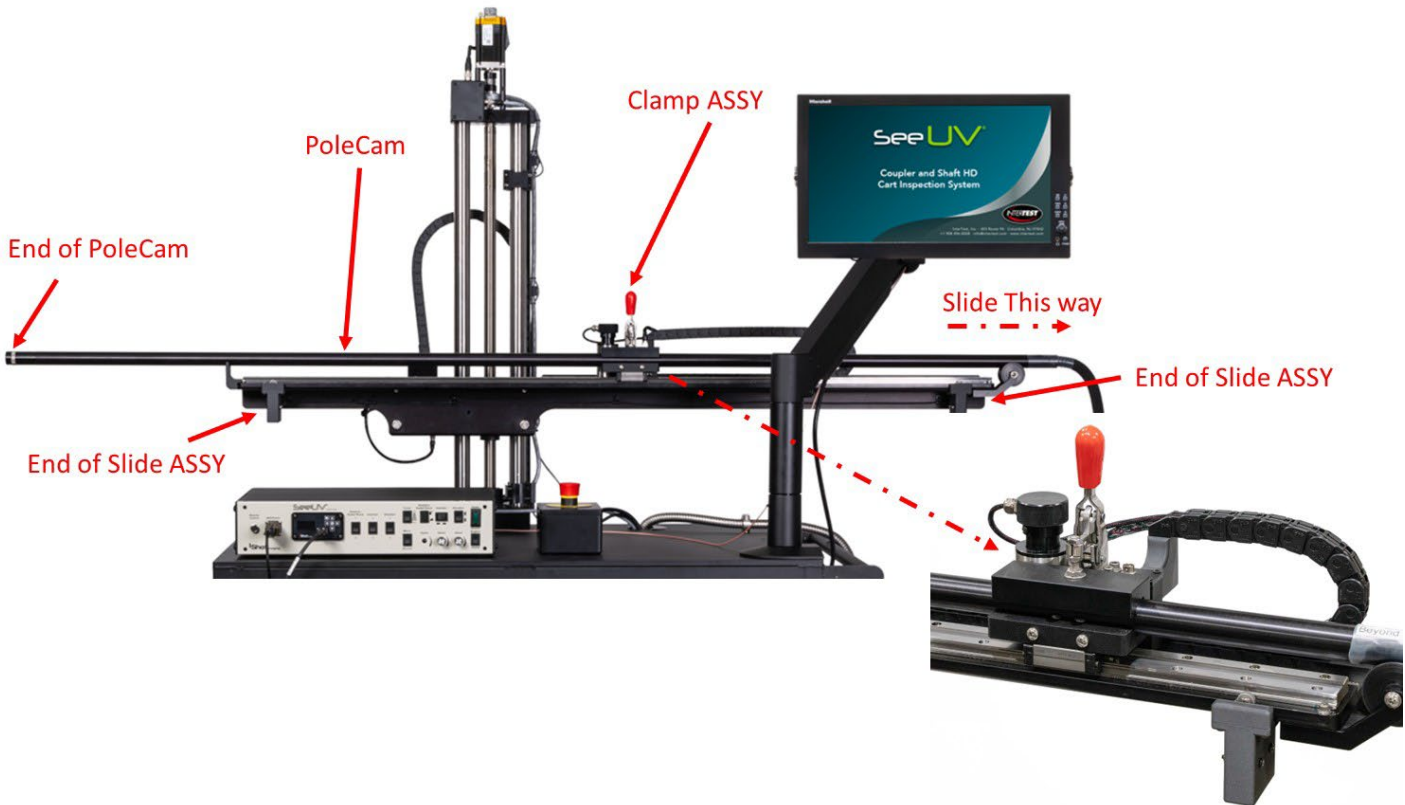
Note: Optical Tips & wrenches are in the storage drawer

7) Attach Cables as shown.



8) Mount Pole Cam onto Slide:

- a. Push slide assembly all the way to the Right
 - b. Line up end of Polecam with end of Slide assembly
 - c. There is a black line & label on the end of the Polecam that indicates "UP" Make sure this is facing "UP"
 - d. Secure clamp onto Polecam
- Note: Be sure Polecam is in notch prior to clamping so pole is not crushed when locking in the clamp



- 9) Once the Polecam is "Clamped". Allow enough slack to allow the Polecam to be stored in the Storage Holster mounted on the side of the cart. Insert Cable into clamp & tighten.

Note: Cable loop SHOULD NOT touch the floor.

